



70-488^{Q&As}

Developing Microsoft SharePoint Server 2013 Core Solutions

Pass Microsoft 70-488 Exam with 100% Guarantee

Free Download Real Questions & Answers **PDF** and **VCE** file from:

<https://www.lead4pass.com/70-488.html>

100% Passing Guarantee
100% Money Back Assurance

Following Questions and Answers are all new published by Microsoft
Official Exam Center

-  **Instant Download** After Purchase
-  **100% Money Back** Guarantee
-  **365 Days** Free Update
-  **800,000+** Satisfied Customers





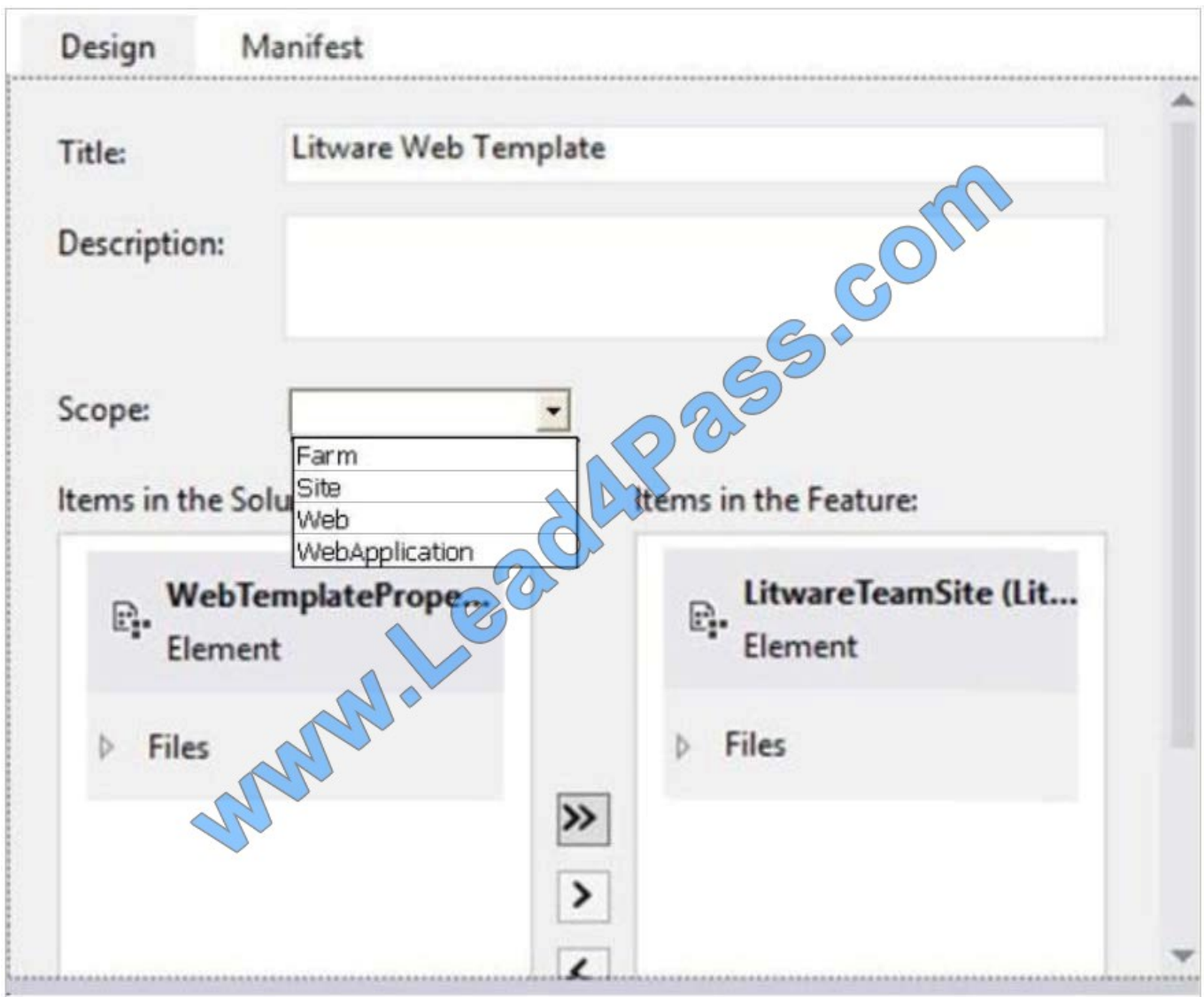
QUESTION 1

HOTSPOT

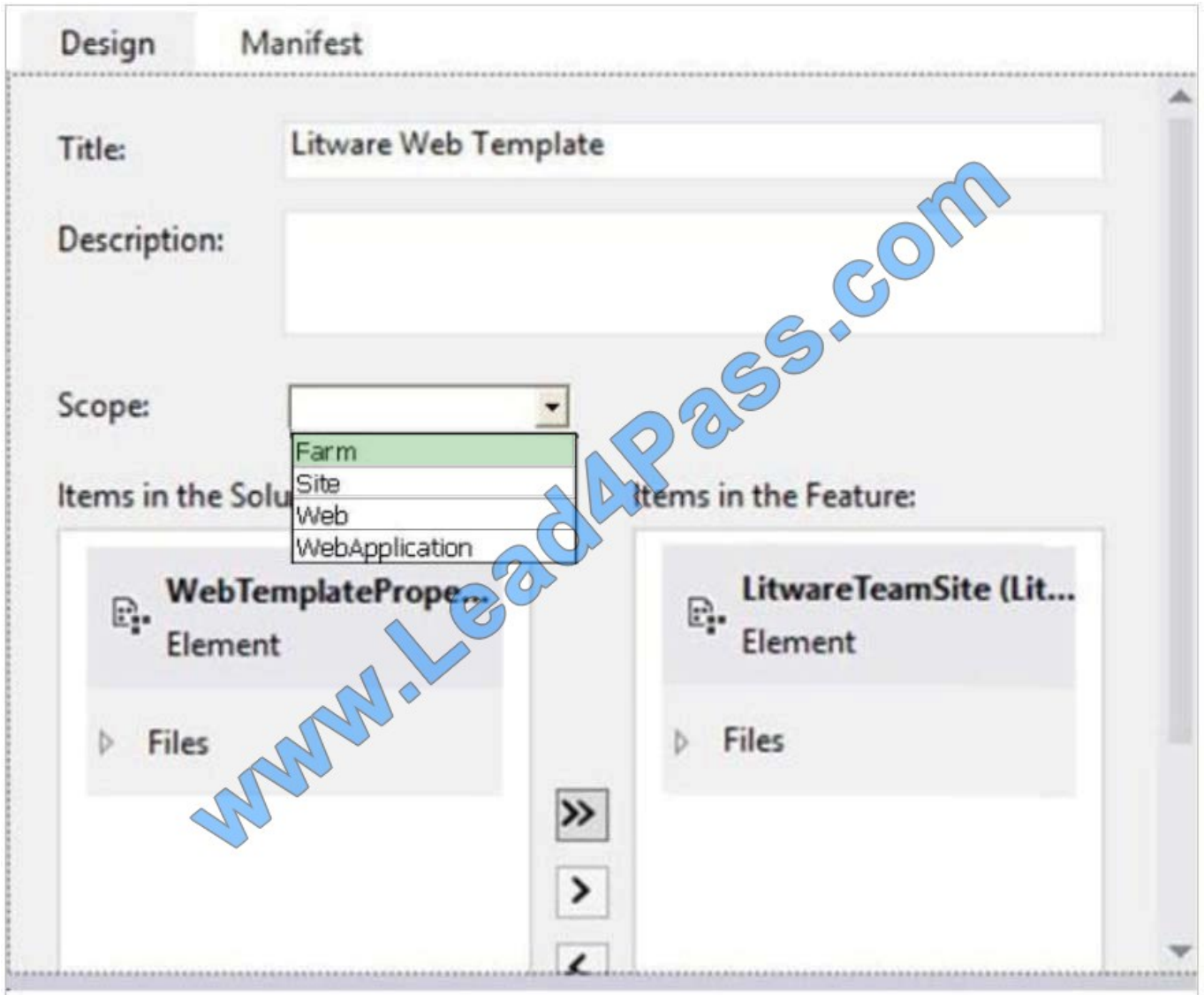
You need to scope the feature containing the Litware Team Site template.

In the Feature Designer tool in Visual Studio 2012, which scope option should you select? (To answer, select the appropriate scope from the drop-down list in the answer area.)

Hot Area:



Correct Answer:



A Farm scoped Feature can be activated at the server farm level.

Scenario: The Litware Team Site template must be available for use in all site collections.

QUESTION 2

You have an app named TaskManagerApp that is published at <http://sharepoint.contoso.com/apps>.

You need to remove the app and ensure that users will no longer be able to use the app.

Which Windows PowerShell cmdlets should you run?



- A. `$instance = Get-SPAppInstance
Web http://sharepoint.contoso.com/apps | where {$_.Title -eq 'TaskManagerApp'}
Uninstall-SPAppInstance -Identity $instance`
- B. `$instance = Get-SPWebApplication
http://sharepoint.contoso.com/apps
Uninstall-SPAppInstance -Identity $instance`
- C. `$instance = Get-SPAppInstance
-Web http://sharepoint.contoso.com/apps | where {$_.Title -eq 'TaskManagerApp'}
Disable-SPFeature -Identity $instance -URL http://sharepoint.contoso.com/apps`
- D. `$instance = Get-SPWebApplication
http://sharepoint.contoso.com/apps
Remove-SPServiceApplication $instance`



A. B. C. D.

Correct Answer: A

Answer: A

* Get-SPAppInstance Use the Get-AppInstance cmdlet to get a collection of app instances that are installed on an SPWeb object. *Uninstall-SPAppInstance Use the Uninstall-SPAppInstance cmdlet to uninstall an instance of an app. This cmdlet is required to be run before a migration process. -----EXAMPLE-----\$instance = Get-SPAppInstance -AppInstanceId \$instance.Id Uninstall-SPAppInstance -Identity \$spapp This example uninstalls an instance of an app.

Incorrect:

Not B, not D: get-SPWebApplication

The Get-SPWebApplication cmdlet returns all Web applications that match the scope given by the Identity parameter. The Identity can be the name of the name, URL, or GUID of the Web application. If no Identity is specified, all Web applications are returned.

EXAMPLE 1-----\$w = Get-SPWebApplication http://sitename

This example gets the Web application for http://sitename and stores it in a variable.

Not C: Disable-SPFeature

The Disable-SPFeature cmdlet disables a SharePoint Feature at the given scope.

Reference: Uninstall-SPAppInstance

QUESTION 3

You create a cloud-hosted SharePoint app.

You must make the app available in the SharePoint Store for customers to install on their host webs.

You need to keep the style and navigation of the app the same as the host web of the app after it is installed by any



customer.

What should you do?

- A. Use an app template and an app.master master file for branding.
- B. Add a reference to SP.UI.Controls.js on the host web. Pass the AppUrl parameter to the host web. Apply branding to the host web.
- C. Add a reference to the SP.UI.Controls.js file located in the new /_layouts/15 directory. Pass the HostUrl parameter to the start page of the app. Use the Chrome control in the HTML page in a declarative manner.
- D. Use a Chrome control to find the differences in the styles between the host web and the app. Resolve all of the differences by using JavaScript.

Correct Answer: C

Microsoft allows developers to import a very basic version of the SharePoint 2013 chrome into their apps without having to manually create matching HTML controls. The functionality for this can be found in the SP.UI.Controls.js file located in the new /_layouts/15 directory. To use the chrome control, first add a reference to SP.UI.Controls.js (make sure you've already loaded the requisite JQuery files and other dependencies), then add an empty to your page markup at or near the top of the page.

Reference: Using the Chrome Control in SharePoint 2013 Apps

QUESTION 4

DRAG DROP

You plan to use an app event receiver in conjunction with a remote event receiver.

You need to create the remote event receiver by using Visual Studio 2012.

Which three actions should you perform in sequence? (To answer, move the appropriate actions from the list of actions to the answer area and arrange them in the correct order.)

Select and Place:



Answer Area

Add an item based on the Remote Event Receiver template.

Upload an item from the Remote Event Receiver template to the library.

Inherit an item from the Remote Event Receiver template.

Implement the **ProcessEvent** method.

Select the event type in the SharePoint Customization wizard.

Correct Answer:

Answer Area

Add an item based on the Remote Event Receiver template.

Select the event type in the SharePoint Customization wizard.

Implement the **ProcessEvent** method.

Note:

* To handle events that occur to items in apps for SharePoint

1. In Visual Studio, open Solution Explorer, and then choose the project node of the app for SharePoint.
2. (box 1) On the menu bar, choose Project, Add New Item.
3. (box 1) In the Templates pane, choose Remote Event Receiver, specify a name in the Name box, and then choose the Add button. The SharePoint Customization Wizard appears.
4. (box 2) On the Choose Event Receiver Settings page, choose an event receiver type, such as List Item Events.
5. Set the event source to a list whose events you want to handle, such as Announcements.



6. In the list of events to handle, select the check box next to each event that you want to handle, such as An item was added, and then choose the Finish button. A web application is created with a web service that contains a code file.
7. (box 3) In the code file for the web service, add code that will execute every time the events that you specified occur.

Reference: How to: Create a remote event receiver

QUESTION 5

A company uses SharePoint for internal collaboration. SharePoint is deployed on a server farm with a single front-end server, a single application server, and a dedicated database server.

You review existing Web Parts that read from and write to SharePoint lists. You find the following code in one of the utility classes and notice memory leaks in the method.

```
Private void ChangeSiteDescription(string SiteUrl, string newSiteDescription)
{
    SPSite siteCollection = null;
    try
    {
        siteCollection = new SPSite(SiteUrl);
        using (SPWeb site = siteCollection.RootWeb)
        {
            site.Description = newSiteDescription;
            site.Update();
        }
    }
    catch (Exception)
    {
        siteCollection.Close();
    }
}
```



You need to ensure that there are no memory leaks in the method.

What should you do?

- A. Add a finally statement and include site.Dispose ().
- B. Add site.Dispose() to the catch statement.
- C. Add a finally statement and include siteCollection.Dispose ();
- D. Add siteCollection.Dispose() to the catch statement.

Correct Answer: C

Need to manually dispose of the siteCollection instance. This can be done through a finally statement.

Note:

* Try and finally blocks or a using statement would be required to avoid potential leaks when you create a disposable object within a foreach block, as shown in the following code example.



```
SPWebApplication webApp = siteCollectionOuter.WebApplication; SPSiteCollection siteCollections = webApp.Sites;

SPSite siteCollectionInner = null;

foreach (siteCollectionInner in siteCollections)
{
    try //Should be first statement after foreach.
    {
        Console.WriteLine(siteCollectionInner.Url);

        //Exception occurs here.
    }
    finally
    {
        if(siteCollectionInner != null)
        siteCollectionInner.Dispose();
    }
}
```

* Why Dispose? Several of the Windows SharePoint Services objects, primarily the SPSite class and SPWeb class objects, are created as managed objects. However, these objects use unmanaged code and memory to perform the majority of their work. The managed part of the object is much smaller than the unmanaged part. Because the smaller managed part does not put memory pressure on the garbage collector, the garbage collector does not release the object from memory in a timely manner. The object's use of a large amount of unmanaged memory can cause some of the unusual behaviors described earlier. Calling applications that work with IDisposable objects in Windows SharePoint Services must dispose of the objects when the applications finish using them. You should not rely on the garbage collector to release them from memory automatically.

Reference: Best Practices: Using Disposable Windows SharePoint Services Objects

[70-488 VCE Dumps](#)

[70-488 Practice Test](#)

[70-488 Study Guide](#)



To Read the [Whole Q&As](#), please purchase the [Complete Version](#) from [Our website](#).

Try our product !

100% Guaranteed Success

100% Money Back Guarantee

365 Days Free Update

Instant Download After Purchase

24x7 Customer Support

Average 99.9% Success Rate

More than 800,000 Satisfied Customers Worldwide

Multi-Platform capabilities - [Windows](#), [Mac](#), [Android](#), [iPhone](#), [iPod](#), [iPad](#), [Kindle](#)

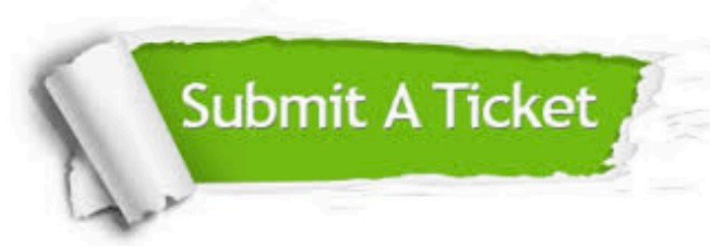
We provide exam PDF and VCE of Cisco, Microsoft, IBM, CompTIA, Oracle and other IT Certifications. You can view Vendor list of All Certification Exams offered:

<https://www.lead4pass.com/allproducts>

Need Help

Please provide as much detail as possible so we can best assist you.

To update a previously submitted ticket:



 <p>One Year Free Update Free update is available within One Year after your purchase. After One Year, you will get 50% discounts for updating. And we are proud to boast a 24/7 efficient Customer Support system via Email.</p>	 <p>Money Back Guarantee To ensure that you are spending on quality products, we provide 100% money back guarantee for 30 days from the date of purchase.</p>	 <p>Security & Privacy We respect customer privacy. We use McAfee's security service to provide you with utmost security for your personal information & peace of mind.</p>
---	---	--

Any charges made through this site will appear as Global Simulators Limited.

All trademarks are the property of their respective owners.

Copyright © lead4pass, All Rights Reserved.