



# 70-470<sup>Q&As</sup>

Re for MCSE: Business Intelligence

## Pass Microsoft 70-470 Exam with 100% Guarantee

Free Download Real Questions & Answers **PDF** and **VCE** file from:

<https://www.lead4pass.com/70-470.html>

100% Passing Guarantee  
100% Money Back Assurance

Following Questions and Answers are all new published by Microsoft  
Official Exam Center

-  **Instant Download** After Purchase
-  **100% Money Back** Guarantee
-  **365 Days** Free Update
-  **800,000+** Satisfied Customers





### QUESTION 1

The Sales database includes a table named Products that contains 42 columns, and two tables that record all product sales transactions. The database does not store aggregated data. The database is continually maintained to provide optimal indexing. The database server is sized appropriately.

The Marketing department requests a delimited text file that includes seven fields containing product information from the Products table.

You have the following requirements:

Display the ProductID in the first column. Organize the remaining columns alphabetically by column heading.

Sort rows in ProductID order.

Aggregate product units sold.

Minimize the time required to return the results. You create a SQL Server Integration Services (SSIS) package and add the appropriate connection managers and a Data Flow task.

You need to develop the Data Flow task.

What should you add to the Data Flow task? (More than one answer choice may achieve the goal. Select the BEST answer.)

- A. A table-based OLE DB source; a Script component; and a Flat File destination.
- B. Only a SQL command-based OLE DB source and a Flat File destination.
- C. A table-based OLE DB source; Lookup, Aggregate, and Sort transformations; and a Flat File destination.
- D. A SQL command-based OLE DB source; Aggregate and Sort transformations; and a Flat File destination.

Correct Answer: D

---

### QUESTION 2

A SQL Server Analysis Services (SSAS) cube contains a large measure group. The fact table supporting the measure group is loaded with new data throughout the day.

You have the following requirements:

Ensure that the cube displays current data as quickly as possible.

Maximize availability of the cube.

Maximize query performance for all aggregation levels.

You need to choose a partitioning strategy that meets the requirements.

Which partitioning strategy should you choose? (More than one answer choice may achieve the goal. Select the BEST answer.)



- A. Create one partition for the current day that uses multidimensional OLAP (MOLAP) with proactive caching as a storage mode.
- B. Create one partition for the current month that uses hybrid OLAP (HOLAP) as a storage mode.
- C. Create one partition for the current day that uses relational OLAP (ROLAP) as a storage mode.
- D. Create one partition for the current day that uses multidimensional OLAP (MOLAP) as a storage mode. Process the partition each night.

Correct Answer: A

---

### QUESTION 3

You are designing a SQL Server Analysis Services (SSAS) cube.

You need to create a measure to count unique customers.

What should you do?

- A. Use role playing dimensions.
- B. Use the Business Intelligence Wizard to define dimension intelligence.
- C. Add a measure that uses the Count aggregate function to an existing measure group.
- D. Add a measure that uses the DistinctCount aggregate function to an existing measure group.
- E. Add a measure that uses the LastNonEmpty aggregate function. Use a regular relationship between the time dimension and the measure group.
- F. Add a measure group that has one measure that uses the DistinctCount aggregate function.
- G. Add a calculated measure based on an expression that counts members filtered by the Exists and NonEmpty functions.
- H. Add a hidden measure that uses the Sum aggregate function. Add a calculated measure aggregating the measure along the time dimension.
- I. Create several dimensions. Add each dimension to the cube.
- J. Create a dimension. Then add a cube dimension and link it several times to the measure group.
- K. Create a dimension. Create regular relationships between the cube dimension and the measure group. Configure the relationships to use different dimension attributes.
- L. Create a dimension with one attribute hierarchy. Set the IsAggregatable property to False and then set the DefaultMember property. Use a regular relationship between the dimension and measure group.
- M. Create a dimension with one attribute hierarchy. Set the IsAggregatable property to False and then set the DefaultMember property. Use a many-to-many relationship to link the dimension to the measure group.
- N. Create a dimension with one attribute hierarchy. Set the ValueColumn property, set the IsAggregatable property to False, and then set the DefaultMember property. Configure the cube dimension so that it does not have a relationship with the measure group. Add a calculated measure that uses the MemberValue attribute property.



O. Create a new named calculation in the data source view to calculate a rolling sum. Add a measure that uses the Max aggregate function based on the named calculation.

Correct Answer: F

---

#### QUESTION 4

You are troubleshooting query performance for a SQL Server Analysis Services (SSAS) cube.

A user reports that a Multidimensional Expressions (MDX) query is very slow.

You need to identify the MDX query statement in a trace by using SQL Server Profiler.

Which event class should you use?

- A. Progress Report Begin
- B. Query Begin
- C. Execute MDX Script Begin
- D. Calculate Non Empty Begin
- E. Get Data From Aggregation
- F. Query Subcube

Correct Answer: B

---

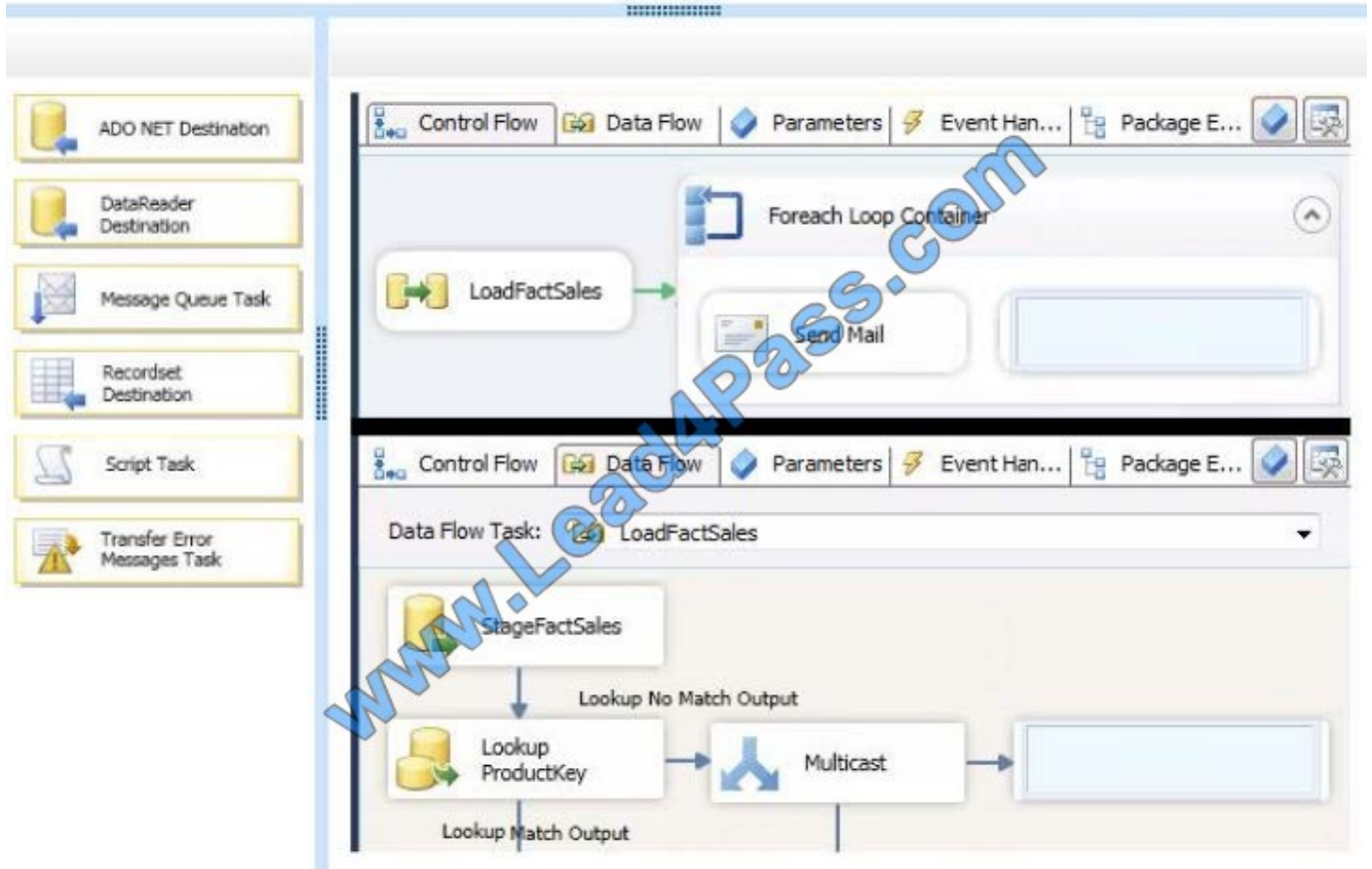
#### QUESTION 5

You need to develop the LoadFactSales package to write the error messages to the SSIS catalog log.

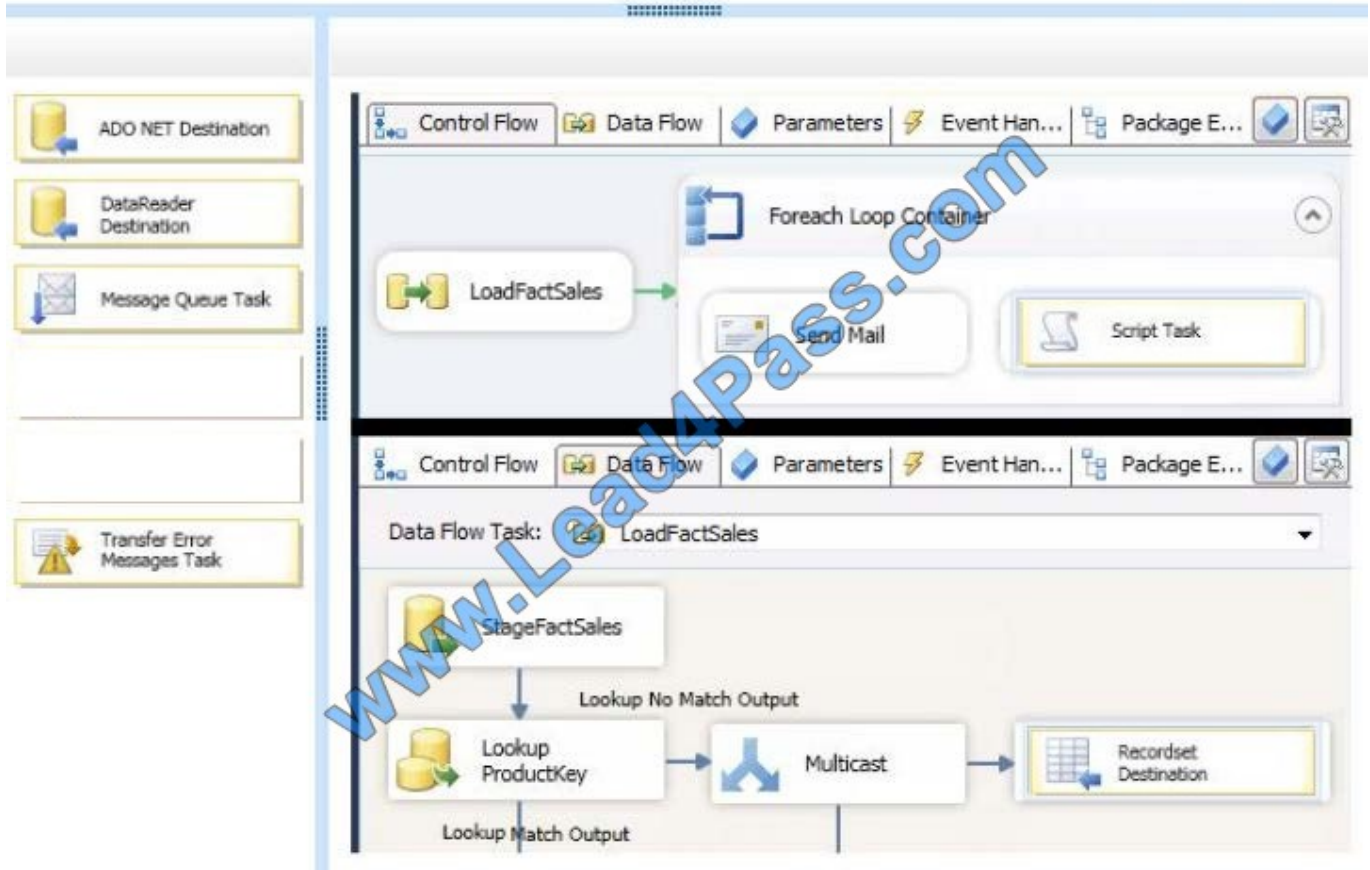
Which components should you use?

To answer, drag the appropriate components to the correct location or locations in the answer area. (Use only components that apply.)

Select and Place:



Correct Answer:



[70-470 PDF Dumps](#)

[70-470 Practice Test](#)

[70-470 Brindumps](#)



To Read the [Whole Q&As](#), please purchase the [Complete Version](#) from [Our website](#).

## Try our product !

100% Guaranteed Success

100% Money Back Guarantee

365 Days Free Update

Instant Download After Purchase

24x7 Customer Support

Average 99.9% Success Rate

More than 800,000 Satisfied Customers Worldwide

Multi-Platform capabilities - [Windows](#), [Mac](#), [Android](#), [iPhone](#), [iPod](#), [iPad](#), [Kindle](#)

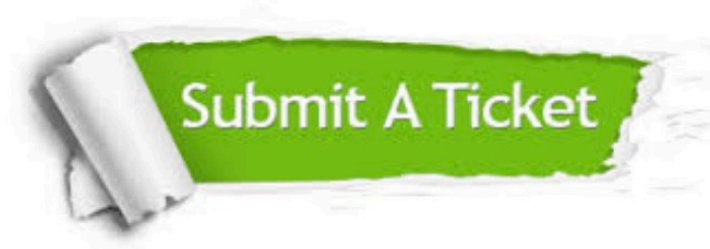
We provide exam PDF and VCE of Cisco, Microsoft, IBM, CompTIA, Oracle and other IT Certifications. You can view Vendor list of All Certification Exams offered:

<https://www.lead4pass.com/allproducts>

## Need Help

Please provide as much detail as possible so we can best assist you.

To update a previously submitted ticket:



 <p><b>One Year Free Update</b> Free update is available within One Year after your purchase. After One Year, you will get 50% discounts for updating. And we are proud to boast a 24/7 efficient Customer Support system via Email.</p>	 <p><b>Money Back Guarantee</b> To ensure that you are spending on quality products, we provide 100% money back guarantee for 30 days from the date of purchase.</p>	 <p><b>Security &amp; Privacy</b> We respect customer privacy. We use McAfee's security service to provide you with utmost security for your personal information &amp; peace of mind.</p>
---	---	--

Any charges made through this site will appear as Global Simulators Limited.

All trademarks are the property of their respective owners.

Copyright © lead4pass, All Rights Reserved.