



# 70-466<sup>Q&As</sup>

Implementing Data Models and Reports with Microsoft SQL Server

## Pass Microsoft 70-466 Exam with 100% Guarantee

Free Download Real Questions & Answers **PDF** and **VCE** file from:

<https://www.lead4pass.com/70-466.html>

100% Passing Guarantee  
100% Money Back Assurance

Following Questions and Answers are all new published by Microsoft  
Official Exam Center

-  **Instant Download** After Purchase
-  **100% Money Back** Guarantee
-  **365 Days** Free Update
-  **800,000+** Satisfied Customers





### QUESTION 1

You are developing a SQL Server Analysis Services (SSAS) multidimensional project.

You identify that a dimension, which has a large number of attributes, is issuing a separate (SELECT DISTINCT) query for each attribute even though they all come from a single database table. The table does not have a large number of rows.

You need to configure the processing of the dimension to issue only a single SQL query to the underlying database, and processing must continue if any errors are encountered.

Which three actions should you perform in sequence? (To answer, move the appropriate actions from the list of actions to the answer area and arrange them in the correct order.)

Select and Place:

Actions	Answer area
In the Properties window, set the <b>ProcessingGroup</b> property to <b>ByTable</b> and then change the <b>KeyDuplicate</b> property to <b>ReportAndStop</b> .	
In the Properties window, set the <b>ProcessingMode</b> property to <b>ByTable</b> and then change the <b>KeyDuplicate</b> property to <b>IgnoreError</b> .	
Open the dimension designer.	
In the Properties window, set the <b>ProcessingMode</b> property to <b>ByTable</b> and then change the <b>KeyDuplicate</b> property to <b>ReportAndStop</b> .	
Select the dimension.	
In the Properties window, set the <b>ProcessingGroup</b> property to <b>ByTable</b> and then change the <b>KeyDuplicate</b> property to <b>IgnoreError</b> .	
Open the cube designer.	

Correct Answer:



Actions	Answer area
In the Properties window, set the <b>ProcessingGroup</b> property to <b>ByTable</b> and then change the <b>KeyDuplicate</b> property to <b>ReportAndStop</b> .	Open the dimension designer.
In the Properties window, set the <b>ProcessingMode</b> property to <b>ByTable</b> and then change the <b>KeyDuplicate</b> property to <b>IgnoreError</b> .	Select the dimension.
In the Properties window, set the <b>ProcessingMode</b> property to <b>ByTable</b> and then change the <b>KeyDuplicate</b> property to <b>ReportAndStop</b> .	In the Properties window, set the <b>ProcessingGroup</b> property to <b>ByTable</b> and then change the <b>KeyDuplicate</b> property to <b>IgnoreError</b> .
Open the cube designer.	

## QUESTION 2

You have a server that has SQL Server 2012 installed.

You need to identify which parallel execution plans are running in serial.

Which tool should you use?

- A. Data Profile Viewer
- B. Database Engine Tuning Advisor
- C. Performance Monitor
- D. Extended Events

Correct Answer: D

## QUESTION 3

A SQL Server Analysis Services (SSAS) cube has roles to define dimension data security. A role named USA allows users to browse data pertaining to the United States. A role named Canada allows users to browse data pertaining to Canada.

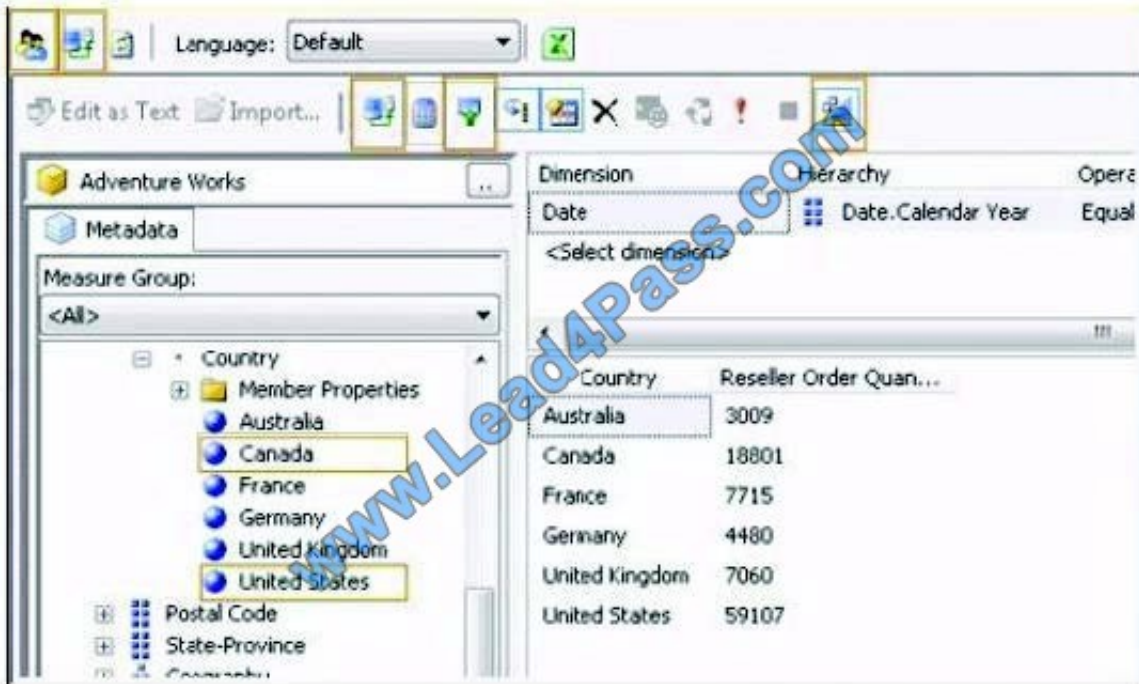


A user can browse sales data pertaining to the United States but cannot browse sales data pertaining to Canada. You validate that the user belongs to the USA and Canada roles.

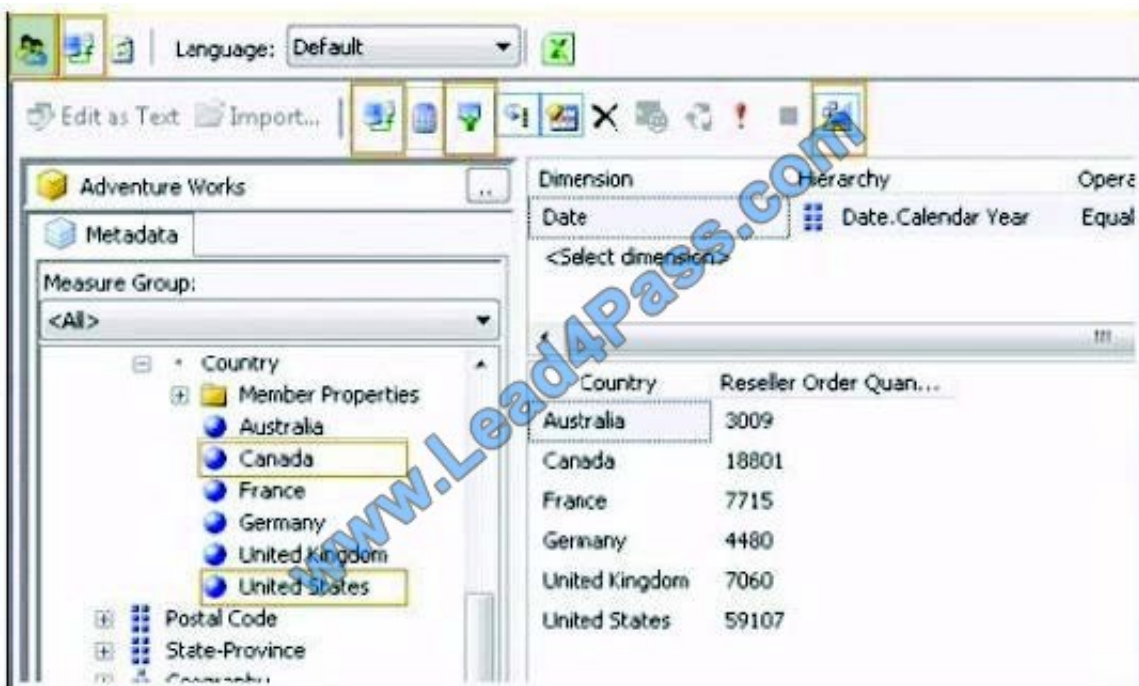
You need to reproduce the issue in SQL Server Management Studio (SSMS).

Which option should you select? To answer, select the appropriate action in the answer area.

Hot Area:



Correct Answer:





#### QUESTION 4

You have a SQL Server 2012 instance that hosts a single-user database. The database does not contain user-created stored procedures or user-created functions. You need to minimize the amount of memory used for query plan caching.

Which advanced server option should you modify?

- A. Enable Contained Databases
- B. Allow Triggers to Fire Others
- C. Optimize for Ad hoc Workloads
- D. Scan for Startup Procs

Correct Answer: C

The optimize for ad hoc workloads option is used to improve the efficiency of the plan cache for workloads that contain many single use ad hoc batches. When this option is set to 1, the Database Engine stores a small compiled plan stub in the plan cache when a batch is compiled for the first time, instead of the full compiled plan. This helps to relieve memory pressure by not allowing the plan cache to become filled with compiled plans that are not reused.

References: <https://docs.microsoft.com/en-us/sql/database-engine/configure-windows/optimize-for-ad-hocworkloads-server-configuration-option>

---

#### QUESTION 5

You are developing a SQL Server Analysis Services (SSAS) multidimensional project.

A fact table is related to a dimension table named DimScenario by a column named ScenarioKey.

The dimension table contains three rows for the following scenarios:

Actual Budget Q1 Budget Q3

You need to create a dimension to allow users to view and compare data by scenario.

What should you do?

- A. Use role playing dimensions.
- B. Use the Business Intelligence Wizard to define dimension intelligence.
- C. Add a measure that uses the Count aggregate function to an existing measure group.
- D. Add a measure that uses the DistinctCount aggregate function to an existing measure group.
- E. Add a measure group that has one measure that uses the DistinctCount aggregate function.
- F. Add a calculated measure based on an expression that counts members filtered by the Exists and NonEmpty functions.
- G. Add a hidden measure that uses the Sum aggregate function. Add a calculated measure aggregating the measure



along the time dimension.

H. Create several dimensions. Add each dimension to the cube.

I. Create a dimension. Then add a cube dimension and link it several times to the measure group.

J. Create a dimension. Create regular relationships between the cube dimension and the measure group. Configure the relationships to use different dimension attributes.

K. Create a dimension with one attribute hierarchy. Set the IsAggregatable property to False and then set the DefaultMember property. Use a regular relationship between the dimension and measure group.

L. Create a dimension with one attribute hierarchy. Set the IsAggregatable property to False and then set the DefaultMember property. Use a many-to-many relationship to link the dimension to the measure group.

M. Create a dimension with one attribute hierarchy. Set the IsAggregatable property to False and then set the DefaultMember property. Use a many-to-many relationship to link the dimension to the measure group.

N. Create a dimension with one attribute hierarchy. Set the ValueColumn property, set the IsAggregatable property to False, and then set the DefaultMember property. Configure the cube dimension so that it does not have a relationship with the measure group. Add a calculated measure that uses the MemberValue attribute property.

O. Create a new named calculation in the data source view to calculate a rolling sum. Add a measure that uses the Max aggregate function based on the named calculation.

Correct Answer: K

[Latest 70-466 Dumps](#)

[70-466 PDF Dumps](#)

[70-466 Study Guide](#)



To Read the [Whole Q&As](#), please purchase the [Complete Version](#) from [Our website](#).

## Try our product !

100% Guaranteed Success

100% Money Back Guarantee

365 Days Free Update

Instant Download After Purchase

24x7 Customer Support

Average 99.9% Success Rate

More than 800,000 Satisfied Customers Worldwide

Multi-Platform capabilities - [Windows](#), [Mac](#), [Android](#), [iPhone](#), [iPod](#), [iPad](#), [Kindle](#)

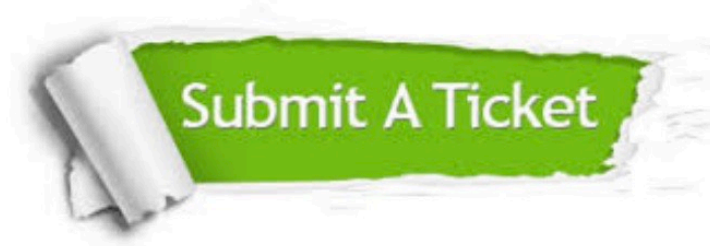
We provide exam PDF and VCE of Cisco, Microsoft, IBM, CompTIA, Oracle and other IT Certifications. You can view Vendor list of All Certification Exams offered:

<https://www.lead4pass.com/allproducts>

## Need Help

Please provide as much detail as possible so we can best assist you.

To update a previously submitted ticket:



 <p><b>One Year Free Update</b> Free update is available within One Year after your purchase. After One Year, you will get 50% discounts for updating. And we are proud to boast a 24/7 efficient Customer Support system via Email.</p>	 <p><b>Money Back Guarantee</b> To ensure that you are spending on quality products, we provide 100% money back guarantee for 30 days from the date of purchase.</p>	 <p><b>Security &amp; Privacy</b> We respect customer privacy. We use McAfee's security service to provide you with utmost security for your personal information &amp; peace of mind.</p>
---	---	--

Any charges made through this site will appear as Global Simulators Limited.

All trademarks are the property of their respective owners.

Copyright © lead4pass, All Rights Reserved.