



70-415^{Q&As}

Implementing a Desktop Infrastructure

Pass Microsoft 70-415 Exam with 100% Guarantee

Free Download Real Questions & Answers **PDF** and **VCE** file from:

<https://www.lead4pass.com/70-415.html>

100% Passing Guarantee
100% Money Back Assurance

Following Questions and Answers are all new published by Microsoft
Official Exam Center

-  **Instant Download** After Purchase
-  **100% Money Back** Guarantee
-  **365 Days** Free Update
-  **800,000+** Satisfied Customers





QUESTION 1

Your network contains a Virtual Desktop Infrastructure (VDI). The VDI contains four servers. The servers are configured as shown in the following table.

Server name	Role service
Server1	Remote Desktop Virtualization Host
Server2	Remote Desktop Web Access
Server3	Remote Desktop Gateway
Server4	Remote Desktop Connection Broker

You create a virtual desktop collection. The virtual desktop collection supports 100 users.

You need to identify how much processor time each virtual machine consumes.

Which performance object should you monitor on Server1?

- A. Hyper-V Hypervisor Virtual Processor
- B. Terminal Services Session
- C. Processor
- D. Hyper-V Hypervisor Logical Processor

Correct Answer: A

QUESTION 2

You need to recommend a WSUS topology that meets the security requirements. What should you do?

- A. In the London office, install a WSUS server in replica mode. In the New York office, install a WSUS server in replica mode.
- B. In the London office, install a WSUS server in replica mode. In the New York office, install a WSUS server in autonomous mode.
- C. In the London office, install a WSUS server in autonomous mode. In the New York office, install a WSUS server in replica mode.
- D. In the London office, install a WSUS server in autonomous mode. In the New York office, install a WSUS server in autonomous mode.

Correct Answer: B

QUESTION 3

Your network contains an Active Directory domain named contoso.com. A Group Policy object (GPO) named



LaptopSecurity is linked to an organizational unit (OU) named Laptops.

A corporate policy states that users who use a laptop computer are forbidden from using removable media.

You configure LaptopSecurity to prevent the users from installing removable devices on their laptop.

A user named User1 cannot install removable devices. However, User1 can read and execute applications from a removable device that the user used before you configured the GPO.

You need to ensure that the users cannot access any removable devices, even if the driver for the removable media was installed already on their laptop.

Which Removable Storage Access setting should you modify?

To answer, select the appropriate setting in the answer area.

Setting	State	Comment
Set time (in seconds) to force reboot	Not configured	No
CD and DVD: Deny execute access	Not configured	No
CD and DVD: Deny read access	Not configured	No
CD and DVD: Deny write access	Not configured	No
Custom Classes: Deny read access	Not configured	No
Custom Classes: Deny write access	Not configured	No
Floppy Drives: Deny execute access	Not configured	No
Floppy Drives: Deny read access	Not configured	No
Floppy Drives: Deny write access	Not configured	No
Removable Disks: Deny execute access	Not configured	No
Removable Disks: Deny read access	Not configured	No
Removable Disks: Deny write access	Not configured	No
All Removable Storage classes: Deny all access	Not configured	No
All Removable Storage: Allow direct access in remote sessions	Not configured	No
Tape Drives: Deny execute access	Not configured	No
Tape Drives: Deny read access	Not configured	No
Tape Drives: Deny write access	Not configured	No
WPD Devices: Deny read access	Not configured	No
WPD Devices: Deny write access	Not configured	No

Extended Standard

19 setting(s)

Correct Answer:



Setting	State	Comment
Set time (in seconds) to force reboot	Not configured	No
CD and DVD: Deny execute access	Not configured	No
CD and DVD: Deny read access	Not configured	No
CD and DVD: Deny write access	Not configured	No
Custom Classes: Deny read access	Not configured	No
Custom Classes: Deny write access	Not configured	No
Floppy Drives: Deny execute access	Not configured	No
Floppy Drives: Deny read access	Not configured	No
Floppy Drives: Deny write access	Not configured	No
Removable Disks: Deny execute access	Not configured	No
Removable Disks: Deny read access	Not configured	No
Removable Disks: Deny write access	Not configured	No
All Removable Storage classes: Deny all access	Not configured	No
All Removable Storage: Allow direct access in remote sessions	Not configured	No
Tape Drives: Deny execute access	Not configured	No
Tape Drives: Deny read access	Not configured	No
Tape Drives: Deny write access	Not configured	No
WPD Devices: Deny read access	Not configured	No
WPD Devices: Deny write access	Not configured	No

Extended Standard

19 setting(s)

QUESTION 4

You have a server named Server1 that runs Windows Server 2012.

You install the Windows Deployment Services server role on Server1.

You plan to deploy Windows 8 to client computers by using Windows Deployment Services (WDS).

You need to identify which images are required for the planned deployment. The solution must use the minimum amount of images.

Which images should you identify? (Each correct answer presents part of the solution. Choose all that apply.)

A. a boot image



- B. an install image
- C. a capture image
- D. a discover image

Correct Answer: AB

QUESTION 5

Your network contains an Active Directory domain named contoso.com. The domain contains a server named SRV1 that runs Windows Server 2012. SRV1 has the Windows Server Updates Services (WSUS) server role installed.

You deploy Microsoft System Center 2012 Virtual Machine Manager (VMM).

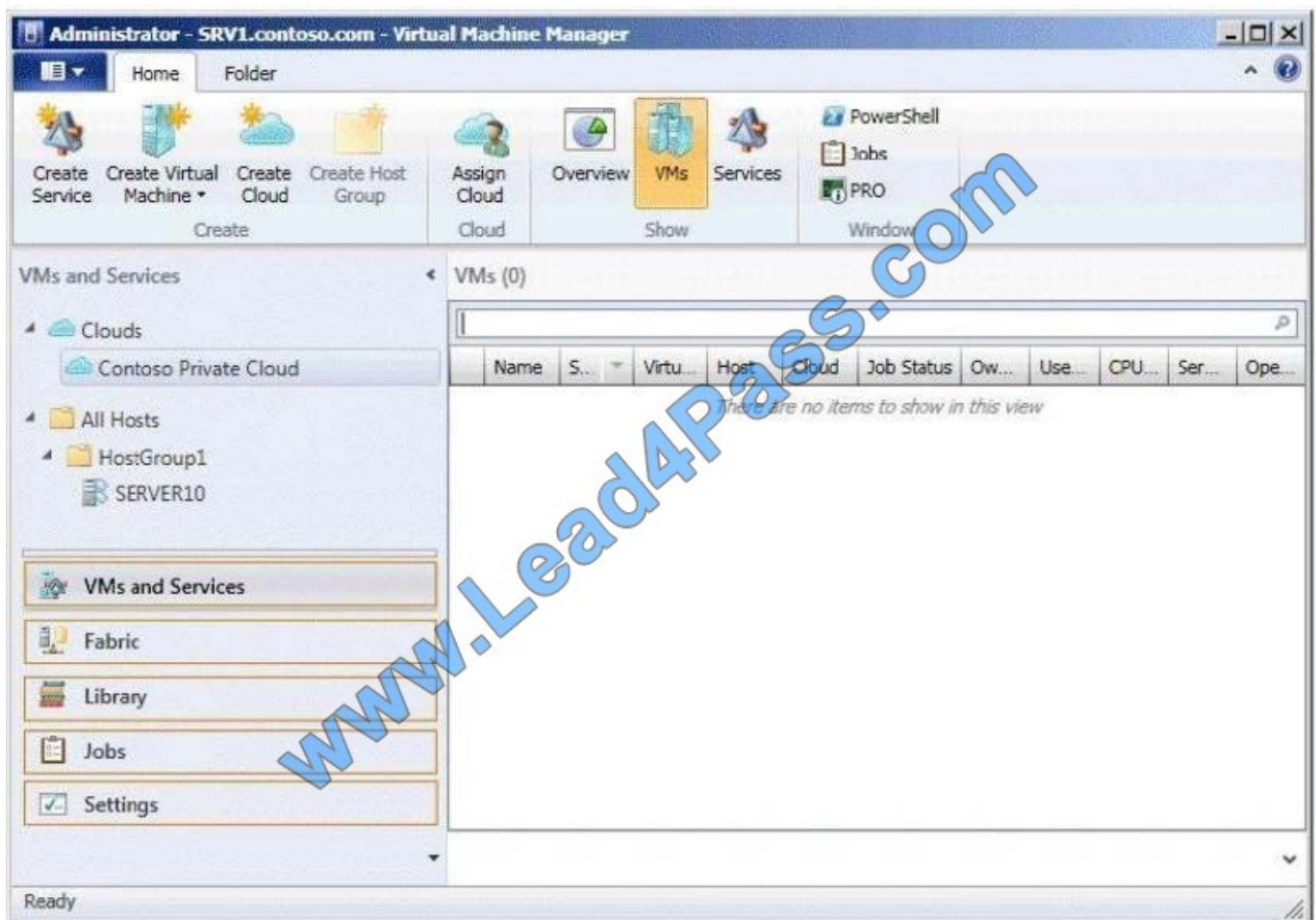
You plan to use WSUS to manage updates for the virtualization infrastructure.

You need to integrate WSUS and VMM to manage the updates.

What should you configure from the Virtual Machine Manager console?

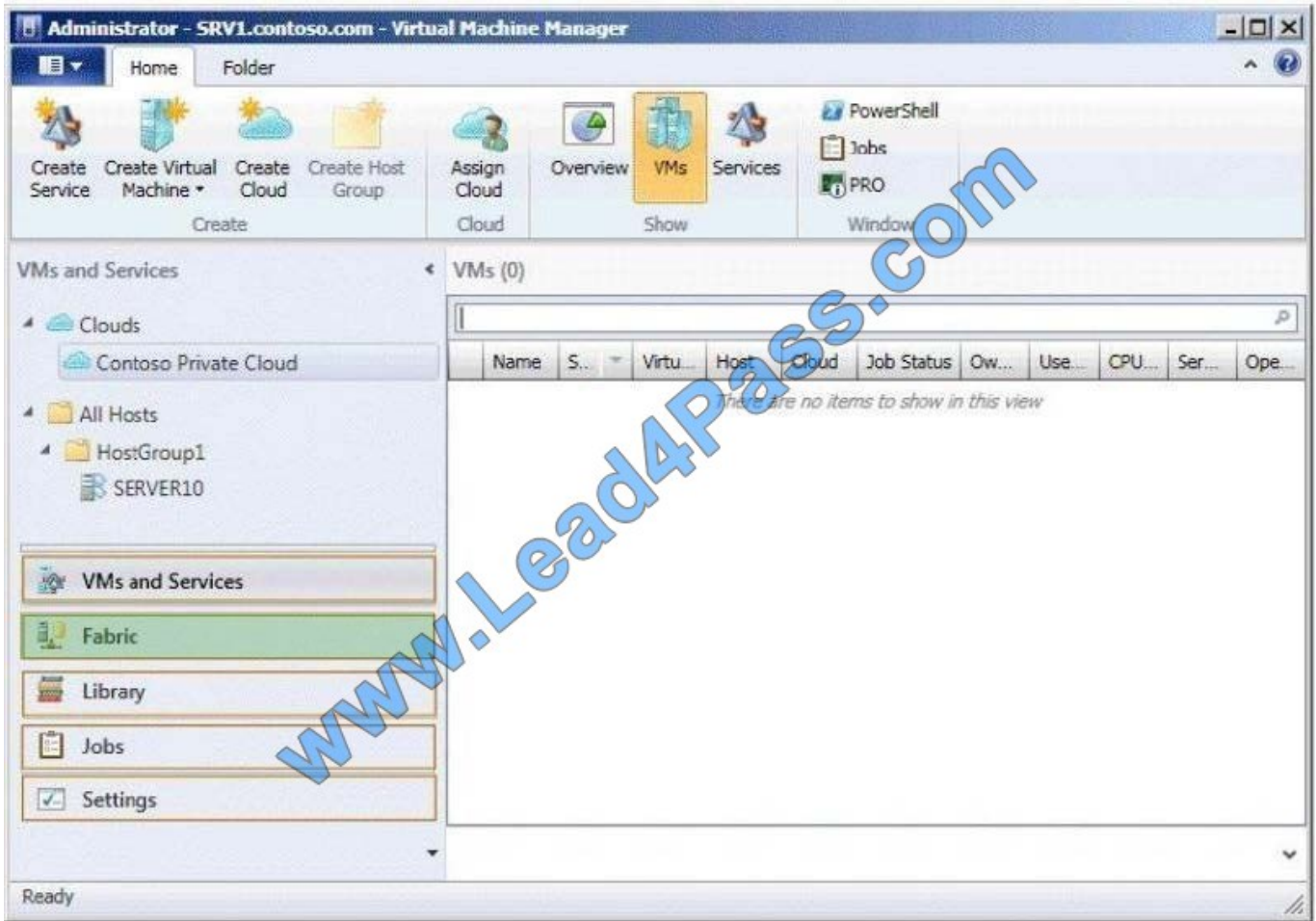
To answer, select the appropriate object in the answer area.

Hot Area:





Correct Answer:



[70-415 PDF Dumps](#)

[70-415 VCE Dumps](#)

[70-415 Practice Test](#)



To Read the [Whole Q&As](#), please purchase the [Complete Version](#) from [Our website](#).

Try our product !

100% Guaranteed Success

100% Money Back Guarantee

365 Days Free Update

Instant Download After Purchase

24x7 Customer Support

Average 99.9% Success Rate

More than 800,000 Satisfied Customers Worldwide

Multi-Platform capabilities - [Windows](#), [Mac](#), [Android](#), [iPhone](#), [iPod](#), [iPad](#), [Kindle](#)

We provide exam PDF and VCE of Cisco, Microsoft, IBM, CompTIA, Oracle and other IT Certifications. You can view Vendor list of All Certification Exams offered:

<https://www.lead4pass.com/allproducts>

Need Help

Please provide as much detail as possible so we can best assist you.

To update a previously submitted ticket:



 <p>One Year Free Update Free update is available within One Year after your purchase. After One Year, you will get 50% discounts for updating. And we are proud to boast a 24/7 efficient Customer Support system via Email.</p>	 <p>Money Back Guarantee To ensure that you are spending on quality products, we provide 100% money back guarantee for 30 days from the date of purchase.</p>	 <p>Security & Privacy We respect customer privacy. We use McAfee's security service to provide you with utmost security for your personal information & peace of mind.</p>
---	---	--

Any charges made through this site will appear as Global Simulators Limited.

All trademarks are the property of their respective owners.

Copyright © lead4pass, All Rights Reserved.