



# 70-414<sup>Q&As</sup>

Implementing an Advanced Server Infrastructure

## Pass Microsoft 70-414 Exam with 100% Guarantee

Free Download Real Questions & Answers **PDF** and **VCE** file from:

<https://www.lead4pass.com/70-414.html>

100% Passing Guarantee  
100% Money Back Assurance

Following Questions and Answers are all new published by Microsoft  
Official Exam Center

-  **Instant Download** After Purchase
-  **100% Money Back** Guarantee
-  **365 Days** Free Update
-  **800,000+** Satisfied Customers





**QUESTION 1**

You need to recommend a solution for managing updates. The solution must meet the technical requirements. What should you include in the recommendation?

- A. A System Center 2012 Configuration Manager management point in the main office and a WSUS downstream server in each office
- B. A System Center 2012 Configuration Manager software update point in the main office and a System Center 2012 Configuration Manager distribution point in each office
- C. A System Center 2012 Configuration Manager management point in the main office and a System Center 2012 Configuration Manager distribution point in each office
- D. A WSUS upstream server in the main office and a WSUS downstream server in each office

Correct Answer: B

Business Requirements	Technical Requirements	Virtualization Requirements	All
<p>The company identifies the following technical requirements:</p> <ul style="list-style-type: none"> <li>- Provide a highly available DHCP solution.</li> <li>- Maintain a central database that contains the security events from all of the servers. The database must be encrypted.</li> <li>- Ensure that an administrator in the main office can manage the approval of Windows updates and updates to third-party applications for all of the users.</li> <li>- Ensure that all of the domain controllers have the ReliableTimeSource registry value in HKEY_LOCAL_MACHINE\SYSTEM\CurrentControlSet\Services\W32Time\Parameters set to 1, even if an administrator changes that value manually.</li> </ul>			
Overview	Existing Environment Network Infrastructure	Current Issues	Planned Changes
<p>The company plans to implement the following changes:</p> <ul style="list-style-type: none"> <li>- Replace all of the domain controllers with new servers that run Windows Server 2012.</li> <li>- Upgrade the CRM application to use a web-based application that connects to the current CRM database. The web application will store session data in the memory of each web server.</li> <li>- Initially, deploy two front-end web servers to two virtual machines. Additional virtual web servers will be deployed in the future.</li> <li>- Monitor the availability of the CRM application and create alerts when the overall availability is less than 99 percent.</li> <li>- Implement Microsoft System Center 2012 to manage the new environment.</li> </ul>			
Distribution point	<p>A site system role that contains source files for clients to download, such as application content, software packages, software updates, operating system images, and boot images.</p>		

<http://technet.microsoft.com/en-US/library/gg682106.aspx>

**QUESTION 2**

Your network contains two clusters. The clusters are configured as shown in the following table.



Cluster name	Resource	Node
Cluster1	Hyper-V	3
Cluster2	Distributed File System (DFS)	5

All of the servers in both of the clusters run Windows Server 2012. You need to plan the application of Windows updates to the nodes in the cluster. What should you include in the plan? More than one answer choice may achieve the goal. Select the BEST answer.

- A. Cluster-Aware Updating (CAU) self-updating and downloaded updates from Windows Server Update Services (WSUS)
- B. Microsoft System Center 2016 Service Manager integrated with Windows Server Update Service (WSUS)
- C. A manual application of Windows updates on all of the cluster node
- D. Microsoft System Center Configuration Manager (Current Branch) integrated with Windows Server Update Service (WSUS)

Correct Answer: A

### QUESTION 3

Your network contains two servers named Server1 and Server2 that run Windows Server 2012.

Server1 has the iSCSI Target Server role service installed and is configured to have five iSCSI virtual disks.

You install the Multipath I/O (MPIO) feature on Server2.

From the MPIO snap-in, you add support for iSCSI devices.

You need to ensure that Server2 can connect to the five iSCSI disks. The solution must ensure that Server2 uses MPIO to access the disks.

Which three actions should you perform?

To answer, move the three appropriate actions from the list of actions to the answer area and arrange them in the correct order.

Select and Place:



Actions	Answer Area
On Server1, add the initiator ID of Server2.	
On Server2, from the iSCSI Initiator Properties, run Quick Connect.	
On Server1, from the iSCSI Initiator Properties, click <b>Connect</b> , and then select <b>Enable multi-path</b> .	
On Server2, install the iSCSI Target Server role service.	
On Server2, from the iSCSI Initiator Properties, click <b>Connect</b> , and then select <b>Enable multi-path</b> .	

Correct Answer:

Actions	Answer Area
	On Server1, add the initiator ID of Server2.
	On Server2, from the iSCSI Initiator Properties, run Quick Connect.
On Server1, from the iSCSI Initiator Properties, click <b>Connect</b> , and then select <b>Enable multi-path</b> .	On Server2, from the iSCSI Initiator Properties, click <b>Connect</b> , and then select <b>Enable multi-path</b> .
On Server2, install the iSCSI Target Server role service.	

#### QUESTION 4

You need to implement Windows Network Load Balancing (NLB).

Which three actions should you perform in sequence? To answer, move the appropriate actions from the list of actions to the answer area and arrange them in the correct order.

Select and Place:



**Actions**

- Start NLB Manager on DETROOTCA, and create the new NLB cluster.
- Start NLB Manager on CHICRL01, and add CHICRL01 to the NLB cluster.
- Create an entry in DNS for the NLB cluster using the name detcrl01.contoso.com.
- Create an entry in DNS for the NLB cluster using the name crl.contoso.com.
- Start NLB Manager on DETCRL01, and create a new NLB cluster.
- Start NLB Manager on DETCRL01, and add the domain crl.contoso.com to the NLB cluster.

**Answer Area**

Empty answer area boxes for the first question.

Correct Answer:

**Actions**

- 
- 
- Create an entry in DNS for the NLB cluster using the name detcrl01.contoso.com.
- 
- Start NLB Manager on DETCRL01, and create a new NLB cluster.
- Start NLB Manager on DETCRL01, and add the domain crl.contoso.com to the NLB cluster.

**Answer Area**

Answer area boxes for the second question, containing the correct sequence of actions.

**QUESTION 5**

You need to ensure that all new production Hyper-V virtual machines can be deployed correctly.

Which three actions should you perform in sequence? To answer, move the appropriate actions from the list of actions to the answer area and arrange them in the correct order.

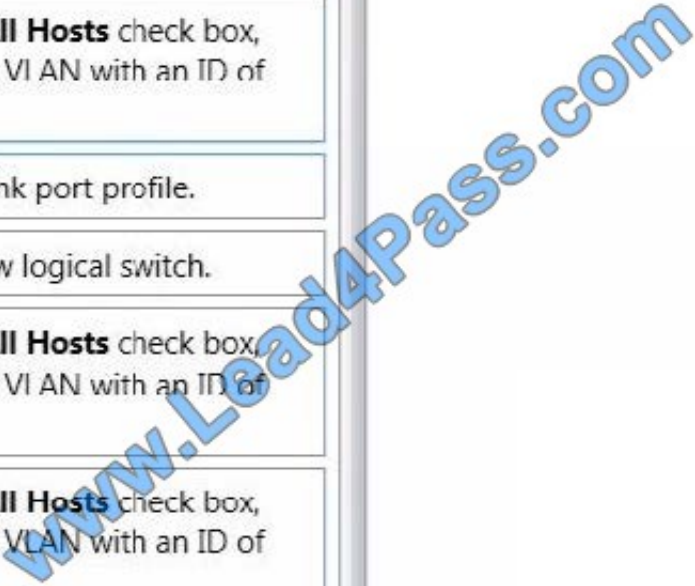
Select and Place:



**Actions**

**Answer Area**

- Create a new logical network.
- Select the **All Hosts** check box, and insert a VI AN with an ID of **30**.
- Add an uplink port profile.
- Create a new logical switch.
- Select the **All Hosts** check box, and insert a VI AN with an ID of **20**.
- Select the **All Hosts** check box, and insert a VLAN with an ID of **40**.
- Add a network site.



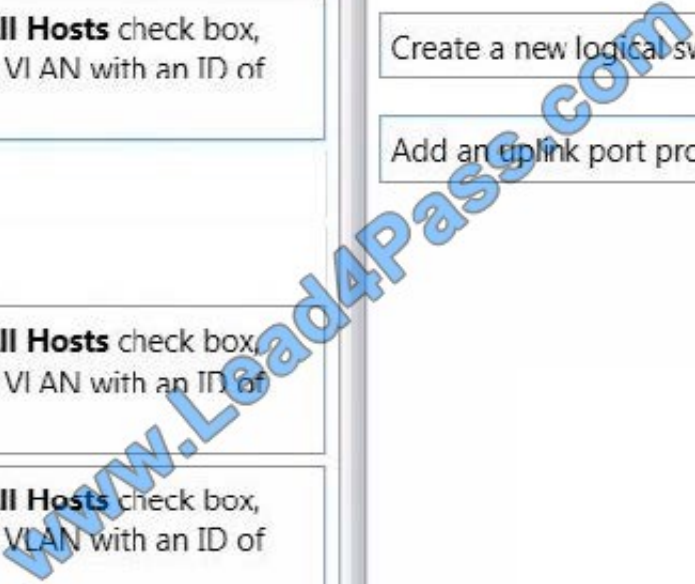
Correct Answer:

**Actions**

**Answer Area**

- Select the **All Hosts** check box, and insert a VI AN with an ID of **30**.
- Select the **All Hosts** check box, and insert a VI AN with an ID of **20**.
- Select the **All Hosts** check box, and insert a VLAN with an ID of **40**.
- Add a network site.

- Create a new logical network.
- Create a new logical switch.
- Add an uplink port profile.





[70-414 VCE Dumps](#)

[70-414 Practice Test](#)

[70-414 Study Guide](#)



To Read the [Whole Q&As](#), please purchase the [Complete Version](#) from [Our website](#).

## Try our product !

100% Guaranteed Success

100% Money Back Guarantee

365 Days Free Update

Instant Download After Purchase

24x7 Customer Support

Average 99.9% Success Rate

More than 800,000 Satisfied Customers Worldwide

Multi-Platform capabilities - [Windows](#), [Mac](#), [Android](#), [iPhone](#), [iPod](#), [iPad](#), [Kindle](#)

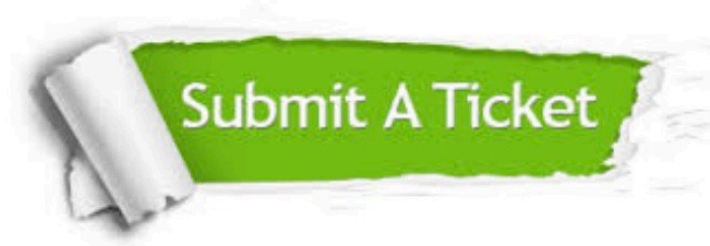
We provide exam PDF and VCE of Cisco, Microsoft, IBM, CompTIA, Oracle and other IT Certifications. You can view Vendor list of All Certification Exams offered:

<https://www.lead4pass.com/allproducts>

## Need Help

Please provide as much detail as possible so we can best assist you.

To update a previously submitted ticket:



 <p><b>One Year Free Update</b> Free update is available within One Year after your purchase. After One Year, you will get 50% discounts for updating. And we are proud to boast a 24/7 efficient Customer Support system via Email.</p>	 <p><b>Money Back Guarantee</b> To ensure that you are spending on quality products, we provide 100% money back guarantee for 30 days from the date of purchase.</p>	 <p><b>Security &amp; Privacy</b> We respect customer privacy. We use McAfee's security service to provide you with utmost security for your personal information &amp; peace of mind.</p>
---	---	--

Any charges made through this site will appear as Global Simulators Limited.

All trademarks are the property of their respective owners.

Copyright © lead4pass, All Rights Reserved.