



70-412^{Q&As}

Configuring Advanced Windows Server 2012 Services

Pass Microsoft 70-412 Exam with 100% Guarantee

Free Download Real Questions & Answers **PDF** and **VCE** file from:

<https://www.lead4pass.com/70-412.html>

100% Passing Guarantee
100% Money Back Assurance

Following Questions and Answers are all new published by Microsoft
Official Exam Center

-  **Instant Download** After Purchase
-  **100% Money Back** Guarantee
-  **365 Days** Free Update
-  **800,000+** Satisfied Customers





QUESTION 1

Your network contains one Active Directory domain. The domain contains two Hyper-V hosts named Host1 and Host2 that run Windows Server 2012 R2.

Host1 contains a virtual machine named VM1.

You plan to move VM1 to Host2.

You need to generate a report that lists any configuration issues on Host2 that will prevent VM1 from being moved successfully.

Which cmdlet should you use?

- A. Move-VM
- B. Test-VHD
- C. Debug-VM
- D. Compare-VM

Correct Answer: C

The Compare-VM cmdlet compares a virtual machine and a virtual machine host for compatibility, returning a compatibility report. This is useful when trying to import or migrate a virtual machine that is incompatible with the target Hyper-V server.

Incorrect Answers:

A: The Move-VM cmdlet moves a virtual machine to a new Hyper-V host.

The parameter -CompatibilityReport specifies a compatibility report which includes any adjustments required for the move. This report must first be generated by the Compare-VM command.

B: The Test-VHD cmdlet tests a virtual hard disk, not a virtual machine which is what we are handling here, for any problems that would make it unusable.

Reference: Technet, Compare-VM

[https://technet.microsoft.com/en-us/library/hh848612\(v=wps.630\).aspx](https://technet.microsoft.com/en-us/library/hh848612(v=wps.630).aspx)

QUESTION 2

Your company has a main office and a branch office. An Active Directory site exists for each office.

The network contains an Active Directory forest named contoso.com. The contoso.com domain contains three member servers named Server1, Server2, and Server3. All servers run Windows Server 2012 R2.

In the main office, you configure Server1 as a file server that uses BranchCache.

In the branch office, you configure Server2 and Server3 as BranchCache hosted cache servers.

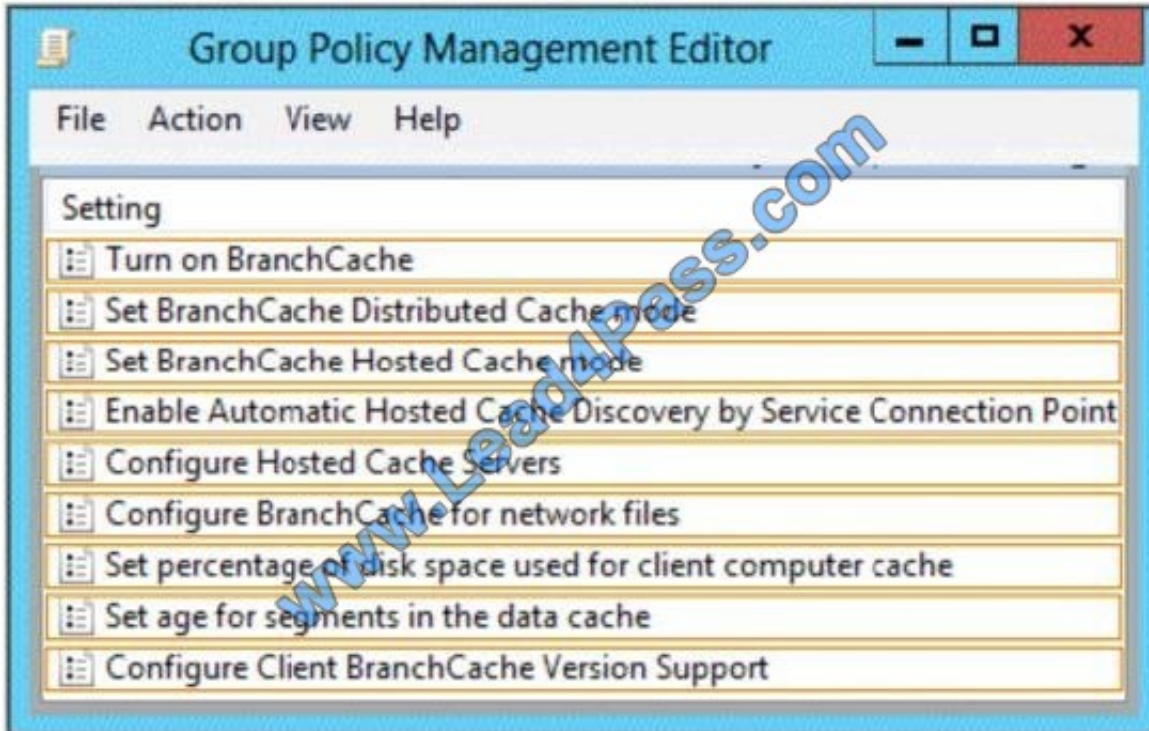


You are creating a Group Policy for the branch office site.

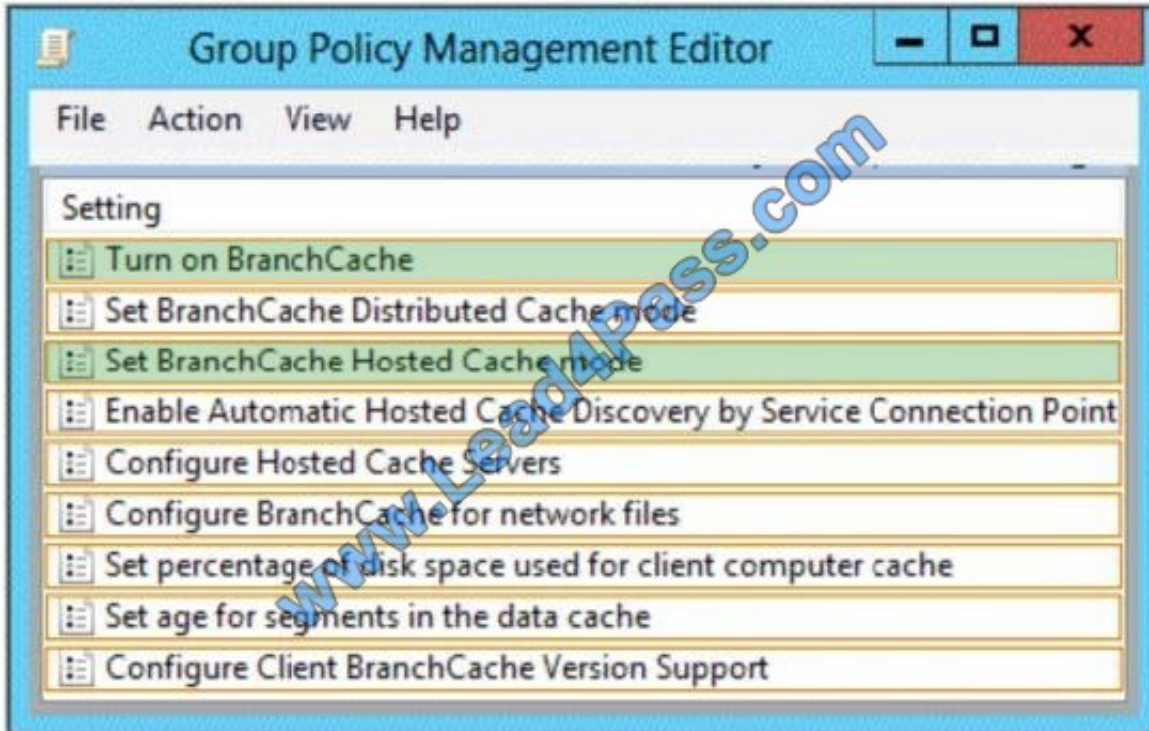
Which two Group Policy settings should you configure?

To answer, select the appropriate two settings in the answer area.

Hot Area:



Correct Answer:



To use Group Policy to configure clients for hosted cache mode Step x: In the Turn on BranchCache dialog box, click Enabled, and then click OK. Step x+1: In the Group Policy Management Editor console, ensure that BranchCache is still selected, and then in the details pane double-click Set BranchCache Hosted Cache mode. The Set BranchCache Hosted Cache mode dialog box opens. Reference: Use Group Policy to configure domain member clients for hosted cache mode [http://technet.microsoft.com/en-us/library/ee649153\(v=ws.10\).aspx](http://technet.microsoft.com/en-us/library/ee649153(v=ws.10).aspx)

QUESTION 3

Your network contains an Active Directory domain named contoso.com.

You are creating a custom Windows Recovery Environment (Windows RE) image.

You need to ensure that when a server starts from the custom Windows RE image, a drive is mapped automatically to a network share.

What should you modify in the image?

- A. startnet.cmd
- B. Xsl-mApp1ngs.xml
- C. Win.ini
- D. smb.types.ps1xml

Correct Answer: A

The best way to define what to start is using startnet.cmd



Add a Customized Script with Startnet.cmd

You can add customized command-line scripts in Windows PE by using Startnet.cmd. By default, Windows PE includes a Startnet.cmd script located at %SYSTEMROOT%\System32 of your customized Windows PE image. Startnet.cmd currently starts Wpeinit.exe. Wpeinit.exe specifically installs Plug and Play devices, processes Unattend.xml settings, and loads network resources.

1. Create a customized Windows PE image as described in Walkthrough: Create a Custom Windows PE Image. During Step 4 of that process ("Add additional customizations"), use the following steps.
2. Edit Startnet.cmd to include your customized commands.

Note

For Plug and Play or networking support, ensure that you include a call to **wpeinit** in your customized Startnet.cmd script.

3. Save your changes and recapture your Windows PE image as described in Walkthrough: Create a Custom Windows PE Image.

[http://technet.microsoft.com/en-us/library/cc766521\(v=ws.10\).aspx](http://technet.microsoft.com/en-us/library/cc766521(v=ws.10).aspx)

QUESTION 4

Your network contains an Active Directory domain named adatum.com. The domain contains a file server named Server1 that runs Windows Server 2012 R2.

All client computers run Windows 7.

You need to ensure that user settings are saved to \\Server1\Users\.

What should you do?

- A. From the properties of each user account, configure the User profile settings.
- B. From a Group Policy object (GPO), configure the Folder Redirection settings.
- C. From the properties of each user account, configure the Home folder settings.
- D. From a Group Policy object (GPO), configure the Drive Maps preferences.

Correct Answer: B



User settings and user files are typically stored in the local user profile, under the Users folder. The files in local user profiles can be accessed only from the current computer, which makes it difficult for users who use more than one computer to work with their data and synchronize settings between multiple computers. Two technologies exist to address this problem: Roaming Profiles and Folder Redirection. Folder Redirection lets administrators redirect the path of a folder to a new location. The location can be a folder on the local computer or a directory on a network file share. Users can work with documents on a server as if the documents were based on a local drive. The documents in the folder are available to the user from any computer on the network. Folder Redirection is located under Windows Settings in the console tree when you edit domain-based Group Policy by using the Group Policy Management Console (GPMC).

References: <https://technet.microsoft.com/en-us/library/cc732275.aspx>

QUESTION 5

You have a server named Server1 that runs Windows Server 2012 R2. You install the File and Storage Services server role on Server1.

From Windows Explorer, you view the properties of a folder named Folder1 and you discover that the Classification tab is missing.

You need to ensure that you can assign classifications to Folder1 from Windows Explorer manually.

What should you do?

- A. From Folder Options, clear Hide protected operating system files (Recommended).
- B. Install the File Server Resource Manager role service.
- C. From Folder Options, select the Always show menus.
- D. Install the Share and Storage Management Tools.

Correct Answer: B

On the Classification tab of the file properties in Windows Server 2012, File Classification Infrastructure adds the ability to manually classify files. You can also classify folders so that any file added to the classified folder will inherit the classifications of the parent folder.

Reference: What's New in File Server Resource Manager in Windows Server.

[Latest 70-412 Dumps](#)

[70-412 PDF Dumps](#)

[70-412 Exam Questions](#)



To Read the [Whole Q&As](#), please purchase the [Complete Version](#) from [Our website](#).

Try our product !

100% Guaranteed Success

100% Money Back Guarantee

365 Days Free Update

Instant Download After Purchase

24x7 Customer Support

Average 99.9% Success Rate

More than 800,000 Satisfied Customers Worldwide

Multi-Platform capabilities - [Windows](#), [Mac](#), [Android](#), [iPhone](#), [iPod](#), [iPad](#), [Kindle](#)

We provide exam PDF and VCE of Cisco, Microsoft, IBM, CompTIA, Oracle and other IT Certifications. You can view Vendor list of All Certification Exams offered:

<https://www.lead4pass.com/allproducts>

Need Help

Please provide as much detail as possible so we can best assist you.

To update a previously submitted ticket:



 <p>One Year Free Update Free update is available within One Year after your purchase. After One Year, you will get 50% discounts for updating. And we are proud to boast a 24/7 efficient Customer Support system via Email.</p>	 <p>Money Back Guarantee To ensure that you are spending on quality products, we provide 100% money back guarantee for 30 days from the date of purchase.</p>	 <p>Security & Privacy We respect customer privacy. We use McAfee's security service to provide you with utmost security for your personal information & peace of mind.</p>
---	---	--

Any charges made through this site will appear as Global Simulators Limited.

All trademarks are the property of their respective owners.

Copyright © lead4pass, All Rights Reserved.