



70-412^{Q&As}

Configuring Advanced Windows Server 2012 Services

Pass Microsoft 70-412 Exam with 100% Guarantee

Free Download Real Questions & Answers **PDF** and **VCE** file from:

<https://www.lead4pass.com/70-412.html>

100% Passing Guarantee
100% Money Back Assurance

Following Questions and Answers are all new published by Microsoft
Official Exam Center

-  **Instant Download** After Purchase
-  **100% Money Back** Guarantee
-  **365 Days** Free Update
-  **800,000+** Satisfied Customers





QUESTION 1

Your network contains three Active Directory forests. The forests are configured as shown in the following table.

Forest name	Forest functional level
Contoso.com	Windows Server 2012 R2
Division1.contoso.com	Windows Server 2012 R2
Dvision2.contoso.com	Windows Server 2012 R2

A two-way forest trust exists between contoso.com and division1.contoso.com. A two-way forest trust also exists between contoso.com and division2.contoso.com.

You plan to create a one-way forest trust from division1.contoso.com to division2.contoso.com.

You need to ensure that any cross-forest authentication requests are sent to the domain controllers in the appropriate forest after the trust is created.

How should you configure the existing forest trust settings?

In the table below, identify which configuration must be performed in each forest. Make only one selection in each column. Each correct selection is worth one point.

Hot Area:

	Division1.contoso.com	Division2.contoso.com
Add division1.contoso.com as a name suffix routing entry.	<input type="checkbox"/>	<input type="checkbox"/>
Add division2.contoso.com as a name suffix routing entry.	<input type="checkbox"/>	<input type="checkbox"/>
Add division1.contoso.com as an exclusion to the name suffix routing entry of contoso.com.	<input type="checkbox"/>	<input type="checkbox"/>
Add division2.contoso.com as an exclusion to the name suffix routing entry of contoso.com.	<input type="checkbox"/>	<input type="checkbox"/>

Correct Answer:



	Division1.contoso.com	Division2.contoso.com
Add division1.contoso.com as a name suffix routing entry.	<input type="checkbox"/>	<input checked="" type="checkbox"/>
Add division2.contoso.com as a name suffix routing entry.	<input type="checkbox"/>	<input type="checkbox"/>
Add division1.contoso.com as an exclusion to the name suffix routing entry of contoso.com.	<input type="checkbox"/>	<input type="checkbox"/>
Add division2.contoso.com as an exclusion to the name suffix routing entry of contoso.com.	<input checked="" type="checkbox"/>	<input type="checkbox"/>

There will be a one-way forest trust from division1.contoso.com to division2.contoso.com. Division1 trusts Division2. Division2 must be able to access resources in Division1. Division1 should not be able to access resources in Division2.

QUESTION 2

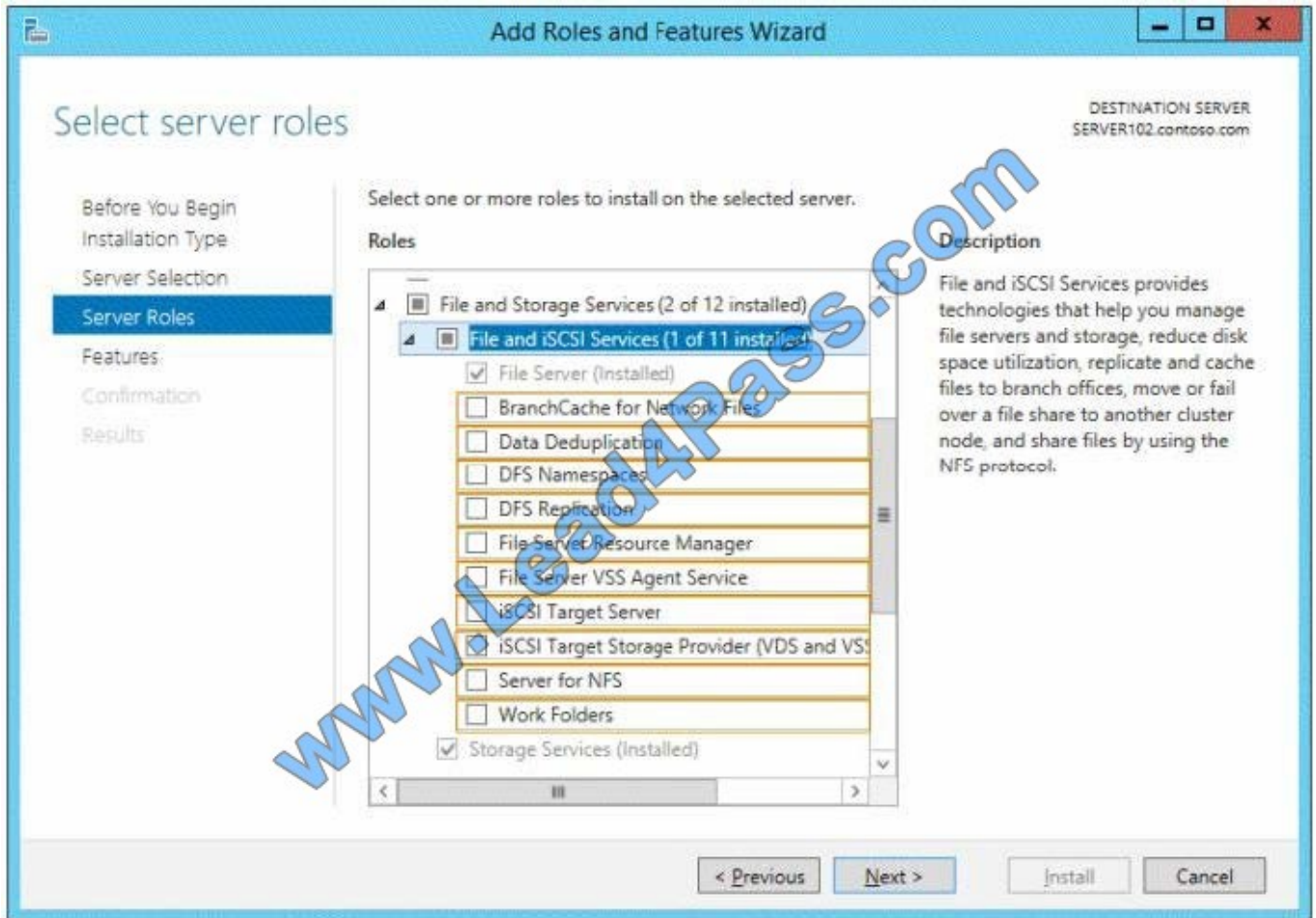
You have a file server named Server1 that runs Windows Server 2012 R2.

You need to ensure that you can use the NFS Share - Advanced option from the New Share Wizard in Server Manager.

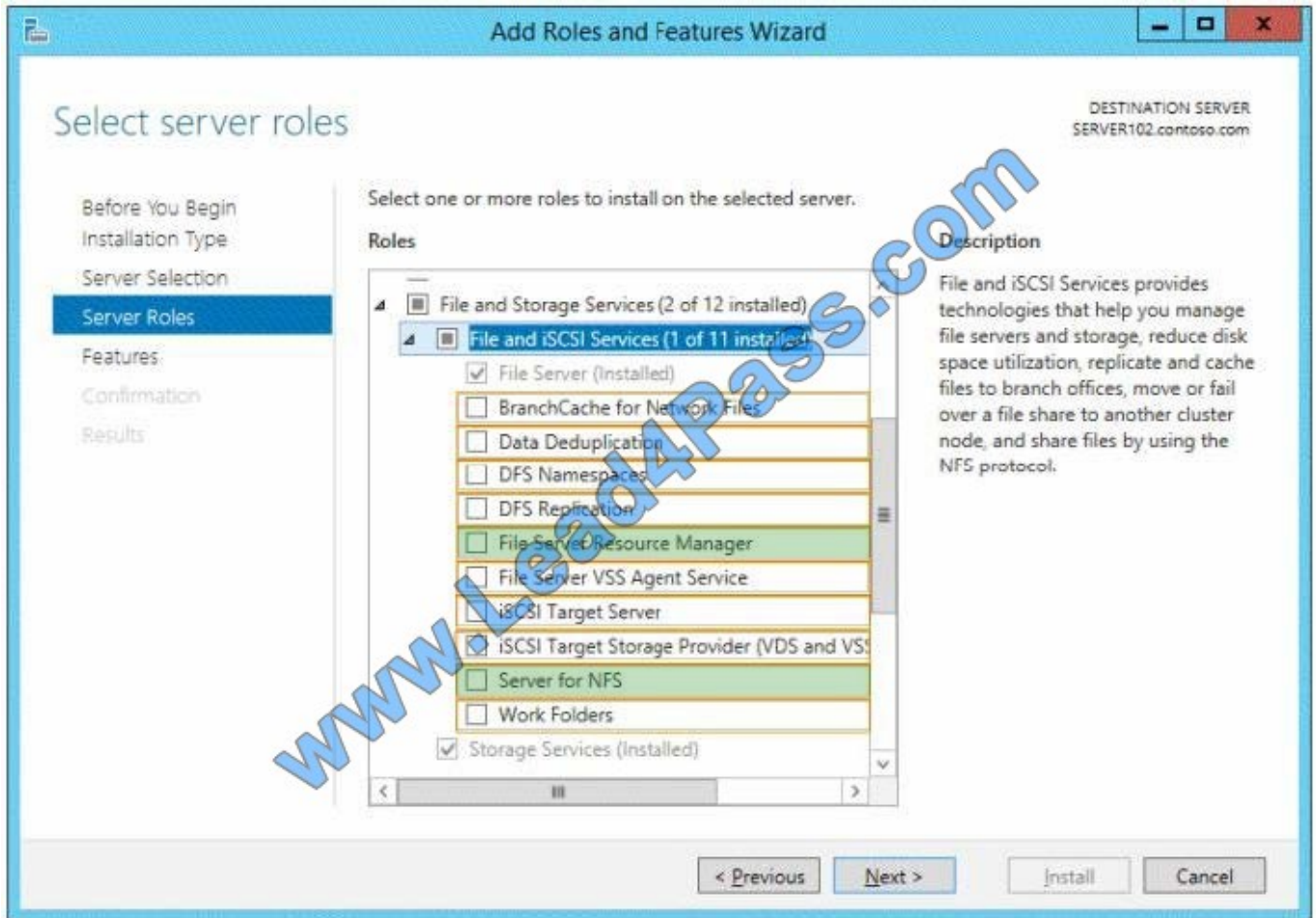
Which two role services should you install?

To answer, select the appropriate two role services in the answer area.

Hot Area:



Correct Answer:



Explanation/Reference:

File Server Resource Manager Role

File Server Resource Manager is a set of features that allow you to manage and classify data that is stored on file servers.

Note: NFS Share – Advanced

This advanced profile offers additional options to configure a NFS file share.

Set the folder owners for access-denied assistance

Configure default classification of data in the folder for management and access policies

Enable quotas

Reference: How to share a folder in Windows Server 2012.

QUESTION 3

You have a server that runs Windows Server 2012 R2 and has the iSCSI Target Server role service installed. You run the New-IscsiVirtualDisk cmdlet as shown in the New-IscsiVirtualDisk exhibit. (Click the Exhibit button.)



```
Administrator: Windows PowerShell
PS C:\> New-IscsiVirtualDisk -Path C:\iscsiVirtualDisks\Disk2.vhdx -SizeBytes 10GB -ComputerName server2.contoso.com

ClusterGroupName      :
ComputerName          : Server2.Contoso.com
Description            :
DiskType              : Dynamic
HostVolumeId          : {90C0B44E-0393-11E3-AF15-806E6F6E6963}
LocalMountDeviceId    :
OriginalPath          :
ParentPath            :
Path                  : C:\iscsiVirtualDisks\Disk2.vhdx
SerialNumber          : 2923C70B-EB08-4112-9363-FC20C692E15F
Size                  : 10737418240
SnapshotIds           :
Status                : NotConnected
VirtualDiskIndex      : 1206444880

PS C:\>
```

To answer, complete each statement according to the information presented in the exhibits. Each correct selection is worth one point.

Hot Area:

Answer Area

Disk2.vhdx is ... disk space on drive C.

- not using any
- using 4 MB of
- using 10 GB of

Before an iSCSI initiator can connect to Disk2.vhdx, you must ...

- assign Disk2.vhdx to a target.
- modify the NTFS permissions of Disk2.vhdx.
- mount Disk2.vhdx by running dism.exe.

Correct Answer:



Answer Area

Disk2.vhdx is ... disk space on drive C.

- not using any
- using 4 MB of
- using 10 GB of

Before an iSCSI initiator can connect to Disk2.vhdx, you must ...

- assign Disk2.vhdx to a target.
- modify the NTFS permissions of Disk2.vh
- mount Disk2.vhdx by running dism.exe.

From the exhibit we see that the size is 10737418240 bytes. This is roughly 10 GB.

From the exhibit we also see '\\Status: Not connected\\'.

Note: Target: It is an object which allows the iSCSI initiator to make a connection. The Target keeps track of the initiators which are allowed to be connected to it. The Target also keeps track of the iSCSI virtual disks which are associated with

it. Once the initiator establishes the connection to the Target, all the iSCSI virtual disks associated with the Target will be accessible by the initiator.

Reference: Introduction of iSCSI Target in Windows Server 2012

<http://blogs.technet.com/b/filecab/archive/2012/05/21/introduction-of-iscsi-target-in-windows-server-2012.aspx>

QUESTION 4

You have DHCP server named Server1 that runs Windows Server 2012 R2.

Server1 has two scopes named Production and Development.

Currently, all DHCP clients register their host name in a DNS zone named contoso.com.

You need to ensure that only the clients that obtain an IP address from the development scope, register their host name in a DNS zone named dev.contoso.com.

What should you do?

- A. Modify the advanced settings of the DHCP server.
- B. Run the set-DHCPServer4scope cmdlet.
- C. Modify the DNS settings of the development scope.
- D. Run the add-DHCPServer 4policy cmdlet.
- E. Run the set-DHCPServer4DNSSetting cmdlet.



F. Run the Set-DHCPservv4Binding cmdlet.

Correct Answer: D

References: <https://docs.microsoft.com/en-us/powershell/module/dhcpserver/Add-DhcpServv4Policy?view=win10-ps>

QUESTION 5

You have an enterprise certification authority (CA) named CA1.

You have a certificate template named UserAutoEnroll that is based on the User certificate template. Domain users are configured to autoenroll for UserAutoEnroll.

A user named User1 has an email address defined in Active Directory.

A user named User2 does not have an email address defined in Active Directory.

You discover that User1 was issued a certificate based on UserAutoEnroll template automatically.

A request by user2 for a certificate based on the UserAutoEnroll template fails.

You need to ensure that all users can autoenroll for certificated based on the UserAutoEnroll template.

Which setting should you configure from the properties on the UserAutoEnroll certificate template?

- A. Issuance Requirements
- B. Request Handling
- C. Cryptography
- D. Subject Name

Correct Answer: D

Template properties - Subject Name tab

E-mail name. If the E-mail name field is populated in the Active Directory user object, that e-mail name will be used for user accounts. The e-mail name is required for user certificates. If the e-mail name is not populated for a user in AD DS, the certificate request by that user will fail.

References:

[https://technet.microsoft.com/en-us/library/Cc725621\(v=WS.10\).aspx](https://technet.microsoft.com/en-us/library/Cc725621(v=WS.10).aspx)



To Read the [Whole Q&As](#), please purchase the [Complete Version](#) from [Our website](#).

Try our product !

100% Guaranteed Success

100% Money Back Guarantee

365 Days Free Update

Instant Download After Purchase

24x7 Customer Support

Average 99.9% Success Rate

More than 800,000 Satisfied Customers Worldwide

Multi-Platform capabilities - [Windows](#), [Mac](#), [Android](#), [iPhone](#), [iPod](#), [iPad](#), [Kindle](#)

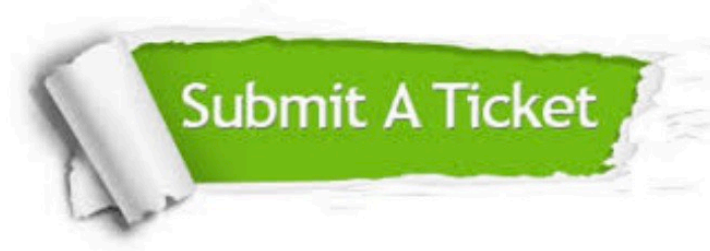
We provide exam PDF and VCE of Cisco, Microsoft, IBM, CompTIA, Oracle and other IT Certifications. You can view Vendor list of All Certification Exams offered:

<https://www.lead4pass.com/allproducts>

Need Help

Please provide as much detail as possible so we can best assist you.

To update a previously submitted ticket:



 <p>One Year Free Update Free update is available within One Year after your purchase. After One Year, you will get 50% discounts for updating. And we are proud to boast a 24/7 efficient Customer Support system via Email.</p>	 <p>Money Back Guarantee To ensure that you are spending on quality products, we provide 100% money back guarantee for 30 days from the date of purchase.</p>	 <p>Security & Privacy We respect customer privacy. We use McAfee's security service to provide you with utmost security for your personal information & peace of mind.</p>
---	---	--

Any charges made through this site will appear as Global Simulators Limited.

All trademarks are the property of their respective owners.

Copyright © lead4pass, All Rights Reserved.