



# 70-411<sup>Q&As</sup>

Administering Windows Server 2012

## Pass Microsoft 70-411 Exam with 100% Guarantee

Free Download Real Questions & Answers **PDF** and **VCE** file from:

<https://www.lead4pass.com/70-411.html>

100% Passing Guarantee  
100% Money Back Assurance

Following Questions and Answers are all new published by Microsoft  
Official Exam Center

-  **Instant Download** After Purchase
-  **100% Money Back** Guarantee
-  **365 Days** Free Update
-  **800,000+** Satisfied Customers





### QUESTION 1

Your network contains an Active Directory domain named contoso.com. All servers run Windows Server 2012 R2.

You need to audit successful and failed attempts to read data from USB drives on the servers.

Which two objects should you configure?

To answer, select the appropriate two objects in the answer area.

Hot Area:

Subcategory	Audit Events
Audit Application Generated	Not Configured
Audit Certification Services	Not Configured
Audit Detailed File Share	Not Configured
Audit File Share	Not Configured
Audit File System	Not Configured
Audit Filtering Platform Connection	Not Configured
Audit Filtering Platform Packet Drop	Not Configured
Audit Handle Manipulation	Not Configured
Audit Kernel Object	Not Configured
Audit Other Object Access Events	Not Configured
Audit Registry	Not Configured
Audit Removable Storage	Not Configured
Audit SAM	Not Configured
Audit Central Access Policy Staging	Not Configured

Correct Answer:



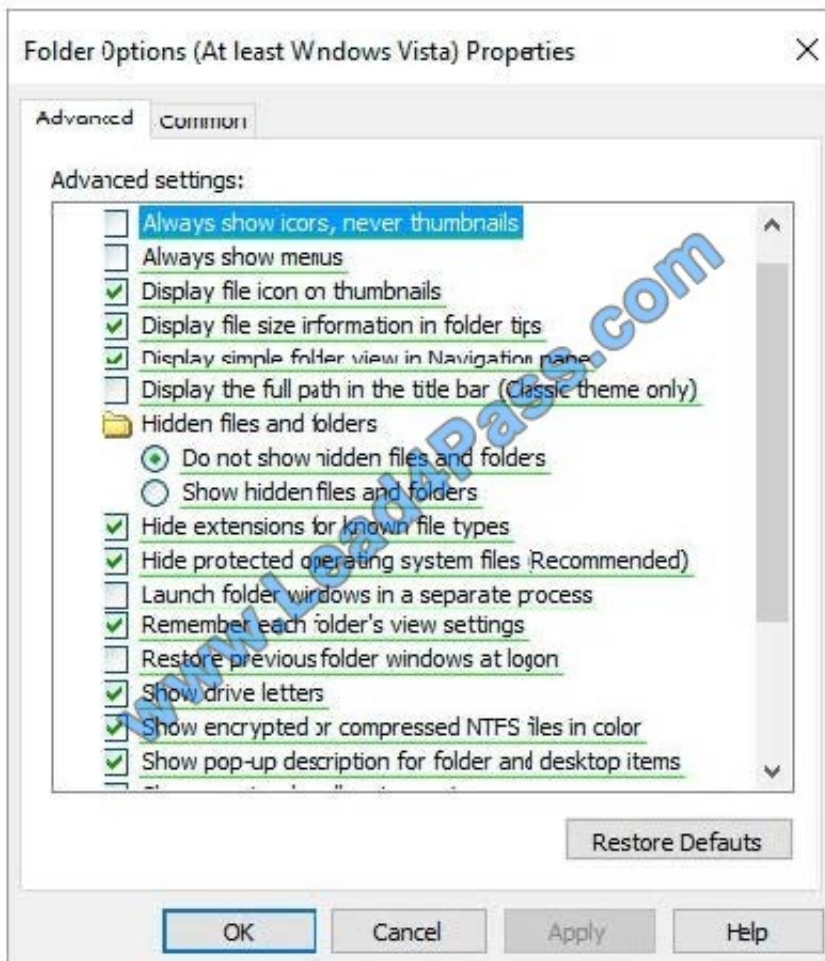
Subcategory	Audit Events
Audit Application Generated	Not Configured
Audit Certification Services	Not Configured
Audit Detailed File Share	Not Configured
Audit File Share	Not Configured
Audit File System	Not Configured
Audit Filtering Platform Connection	Not Configured
Audit Filtering Platform Packet Drop	Not Configured
Audit Handle Manipulation	Not Configured
Audit Kernel Object	Not Configured
Audit Other Object Access Events	Not Configured
Audit Registry	Not Configured
Audit Removable Storage	Not Configured
Audit SAM	Not Configured
Audit Central Access Policy Staging	Not Configured

## QUESTION 2

Your network contains an Active Directory domain named contoso.com. All client computers run Windows 10 Enterprise.

You have a Group Policy object (GPO) named GPO1. GPO1 is linked to the domain.

GPO1 contains the folder option settings as shown in the following exhibit. (Click the Exhibit button.)



You need to configure GPO1 not to apply the Show drive letters setting to users. The solution must not affect any other settings. Which key or keys should you press?

- A. Shift+F10
- B. F5
- C. F7
- D. Ctrl+Shift+F3

Correct Answer: C

### QUESTION 3

Your network contains 25 Web servers that run Windows Server 2012 R2.

You need to configure auditing policies that meet the following requirements:

Generate an event each time a new process is created. Generate an event each time a user attempts to access a file share.



Which two auditing policies should you configure? To answer, select the appropriate two auditing policies in the answer area.

- A. Audit access management (Not Defined)
- B. Audit directory service access (Not Defined)
- C. Audit logon events (Not Defined)
- D. Audit Object (Not Defined)
- E. Audit policy change(Not Defined)
- F. Audit privilege use (Not Defined)
- G. Audit process tracking (Not Defined)
- H. Audit system events(Not Defined)

Correct Answer: DG

Explanation: \* Audit Object Access

Determines whether to audit the event of a user accessing an object (for example, file, folder, registry key, printer, and so forth) which has its own system access control list (SACL) specified.

\* Audit Process Tracking

Determines whether to audit detailed tracking information for events such as program activation, process exit, handle duplication, and indirect object access. Reference: Audit object access <https://technet.microsoft.com/en-us/library/cc976403.aspx>

Reference: Audit Process Tracking <https://technet.microsoft.com/en-us/library/cc976411.aspx>

---

#### QUESTION 4

Your company has a main office and a branch office. The main office is located in Seattle. The branch office is located in Montreal. Each office is configured as an Active Directory site.

The network contains an Active Directory domain named adatum.com. The Seattle office contains a file server named Server1. The Montreal office contains a file server named Server2.

The servers run Windows Server 2012 R2 and have the File and Storage Services server role, the DFS Namespaces role service, and the DFS Replication role service installed.

Server1 and Server2 each have a share named Share1 that is replicated by using DFS Replication.

You need to ensure that users connect to the replicated folder in their respective office when they connect to \\contoso.com\Share1.

Which three actions should you perform? (Each correct answer presents part of the solution. Choose three.)

- A. Create a replication connection.
- B. Create a namespace.





C. Share and publish the replicated folder.

D. Create a new topology.

E. Modify the Referrals settings.

Correct Answer: BCE

To share a replicated folder and publish it to a DFS namespace Click Start, point to Administrative Tools, and then click DFS Management. In the console tree, under the Replication node, click the replication group that contains the replicated

folder you want to share. In the details pane, on the Replicated Folders tab, right-click the replicated folder that you want to share, and then click Share and Publish in Namespace. In the Share and Publish Replicated Folder Wizard, click

Share and publish the replicated folder in a namespace, and then follow the steps in the wizard.

Note that: If you do not have an existing namespace, you can create one in the Namespace Path page in the Share and Publish Replicated Folder Wizard. To create the namespace, in the Namespace Path page, click Browse, and then click

New Namespace.

To create a namespace

Click Start, point to Administrative Tools, and then click DFS Management. In the console tree, right-click the Namespaces node, and then click New Namespace. Follow the instructions in the New Namespace Wizard. To create a standalone namespace on a failover cluster, specify the name of a clustered file server instance on the Namespace Server page of the New Namespace Wizard.

Important

Do not attempt to create a domain-based namespace using the Windows Server 2008 mode unless the forest functional level is Windows Server 2003 or higher. Doing so can result in a namespace for which you cannot delete DFS folders,

yielding the following error message: "The folder cannot be deleted. Cannot complete this function."

To share a replicated folder and publish it to a DFS namespace

1.

Click Start, point to Administrative Tools, and then click DFS Management.

2.

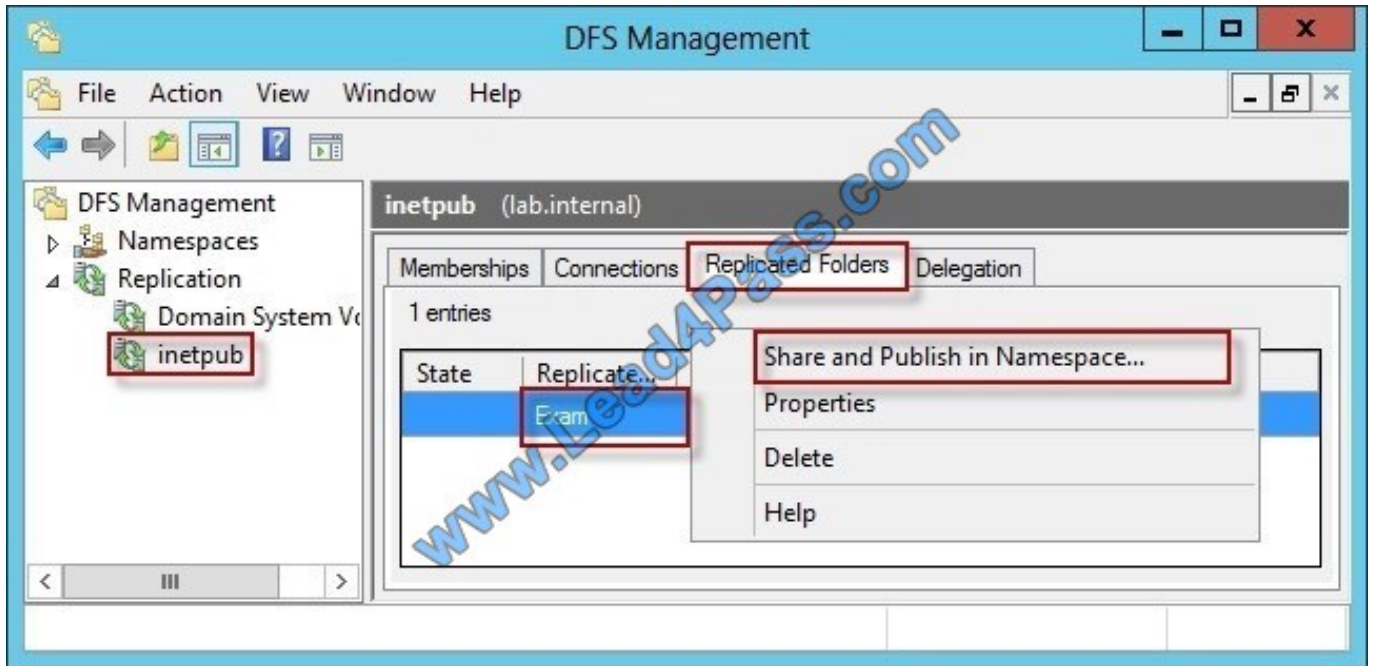
In the console tree, under the Replication node, click the replication group that contains the replicated folder you want to share.

3.

In the details pane, on the Replicated Folders tab, right-click the replicated folder that you want to share, and then click Share and Publish in Namespace.

4.

In the Share and Publish Replicated Folder Wizard, click Share and publish the replicated folder in a namespace, and then follow the steps in the wizard.



"You need to ensure that users connect to the replicated folder in their respective office when they connect to \\contoso.com\Share1."



**Share and Publish Replicated Folder Wizard**

**Namespace Path**

**Steps:** Enter an existing namespace and any folders you want to create in the namespace. The last folder in the namespace path will have a folder target as the replicated folder.

**Publishing Method**

**Share Replicated Folders**

**Namespace Path**

Parent folder in namespace:

Example: \\Domain\Name\Folder

**Confirmation**

New folder name:

Preview of namespace path:

**inetpub Properties**

General Referrals **Advanced**

Specify the amount of time that clients cache (store) referrals for this folder.

Cache duration (in seconds):

This folder inherits settings from the root. Click a check box to override the namespace settings.

Exclude targets outside of the client's site

Effective referral ordering:

Clients fail back to preferred targets

Effective failback mode for clients:

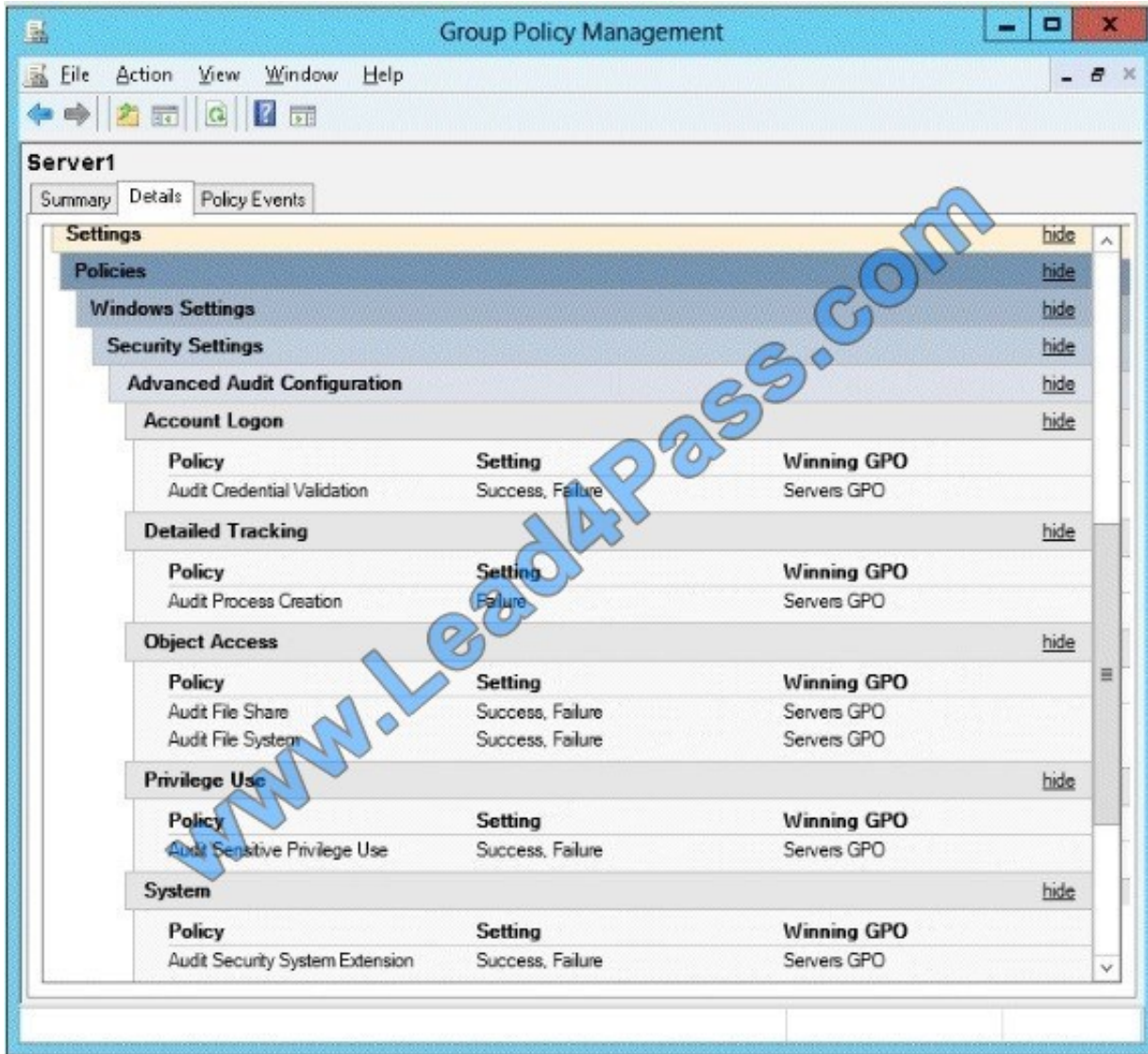
Reference: <http://technet.microsoft.com/en-us/library/cc731531.aspx> <http://technet.microsoft.com/en-us/library/cc772778%28v=ws.10%29.aspx> <http://technet.microsoft.com/en-us/library/cc732414.aspx> <http://technet.microsoft.com/en-us/library/cc772379.aspx> <http://technet.microsoft.com/en-us/library/cc732863%28v=ws.10%29.aspx> <http://technet.microsoft.com/en-us/library/cc725830.aspx> <http://technet.microsoft.com/en-us/library/cc771978.aspx>





### QUESTION 5

Your network contains an Active Directory domain named contoso.com. The domain contains a file server named Server1 that runs Windows Server 2012 R2. You view the effective policy settings of Server1 as shown in the exhibit. (Click the Exhibit button.)



On Server1, you have a folder named C:\Share1 that is shared as Share1. Share1 contains confidential data. A group named Group1 has full control of the content in Share1.

You need to ensure that an entry is added to the event log whenever a member of Group1 deletes a file in Share1.

What should you configure?

- A. the Audit File Share setting of Servers GPO
- B. the Sharing settings of C:\Share1
- C. the Audit File System setting of Servers GPO
- D. the Security settings of C:\Share1



Correct Answer: D

You can use Computer Management to track all connections to shared resources on a Windows Server 2008 R2 system.

Whenever a user or computer connects to a shared resource, Windows Server 2008 R2 lists a connection in the Sessions node.

File access, modification and deletion can only be tracked, if the object access auditing is enabled you can see the entries in the event log.

To view connections to shared resources, type net session at a command prompt or follow these steps:

In Computer Management, connect to the computer on which you created the shared resource.

In the console tree, expand System Tools, expand Shared Folders, and then select Sessions. You can now view connections to shares for users and computers.

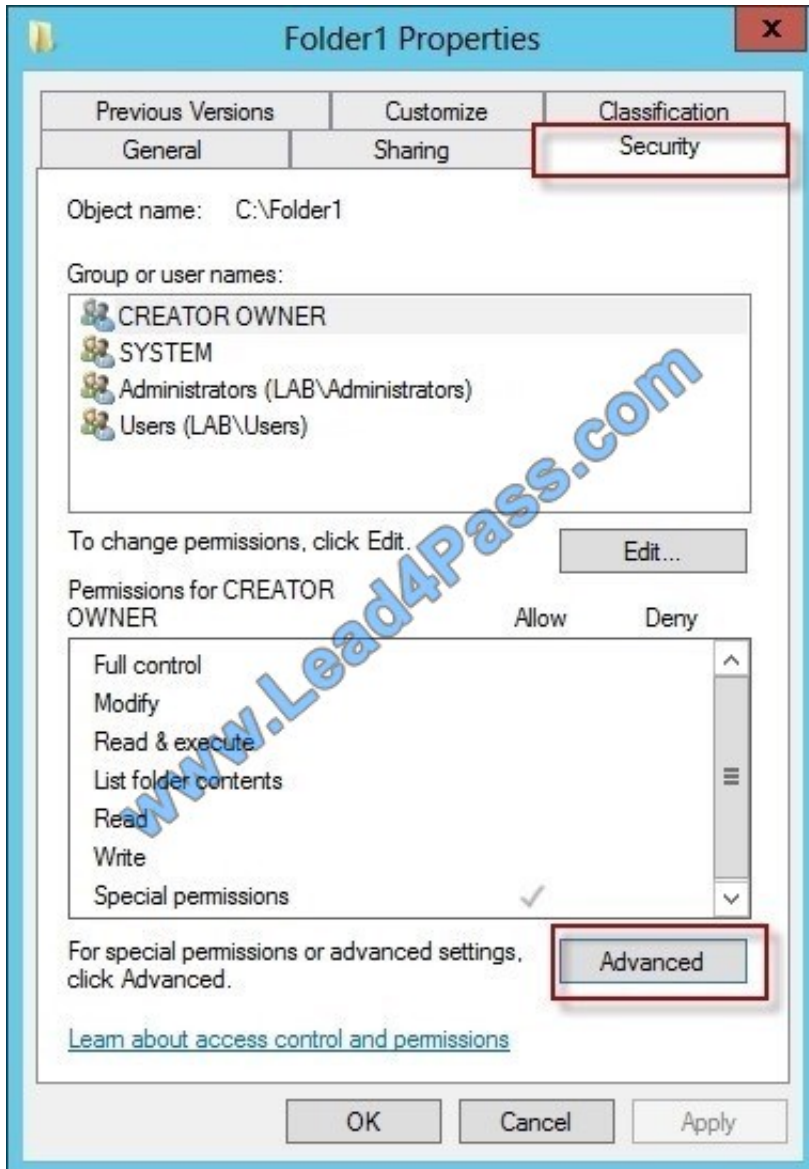
To enable folder permission auditing, you can follow the below steps:

Click start and run "secpol. msc" without quotes.

Open the Local Policies\Audit Policy

Enable the Audit object access for "Success" and "Failure". Go to target files and folders, right click the folder and select properties.

Go to Security Page and click Advanced.

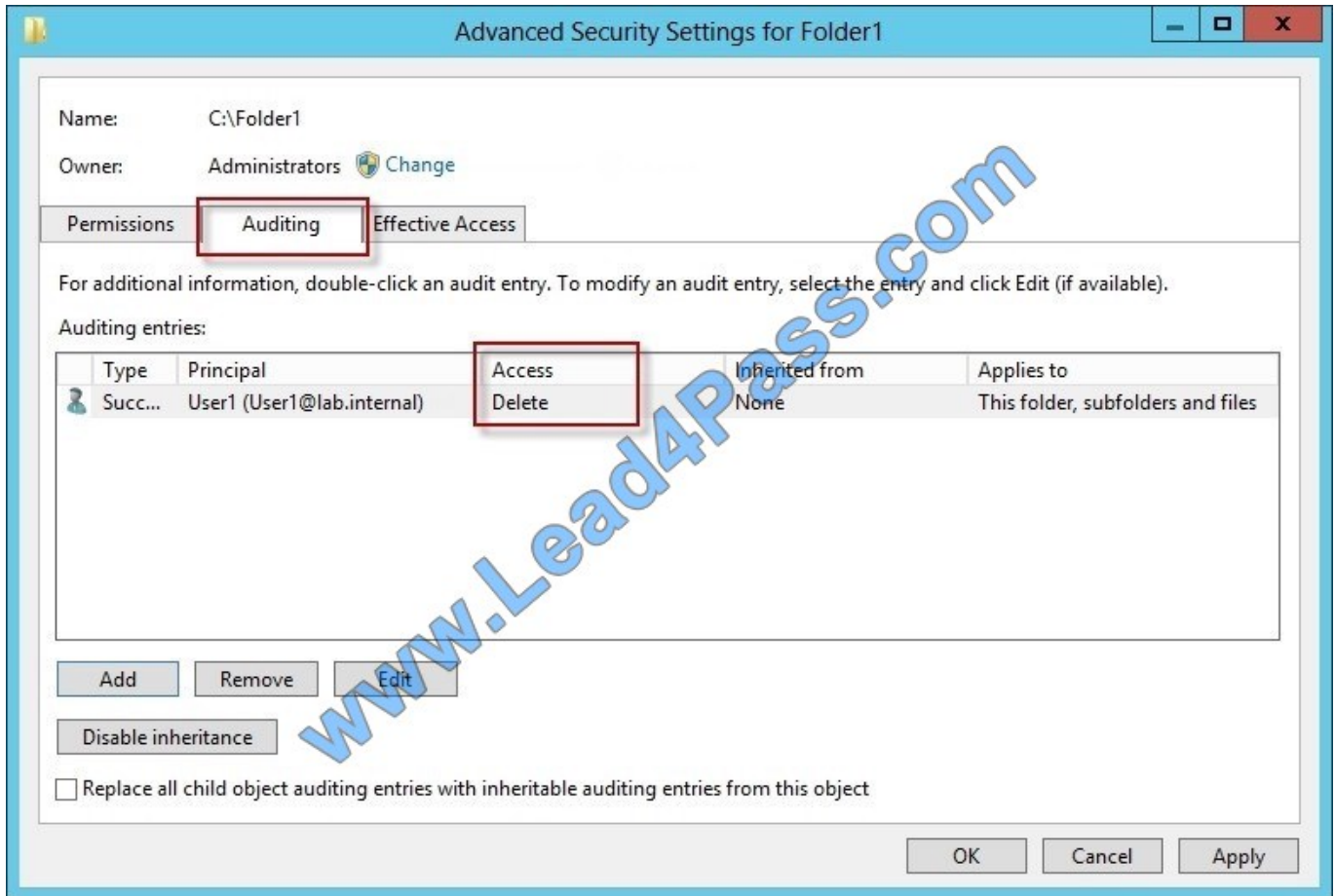


Click Auditing and Edit.

Click add, type everyone in the Select User, Computer, or Group. Choose Apply onto: This folder, subfolders and files.

Tick on the box "Change permissions"

Click OK.



After you enable security auditing on the folders, you should be able to see the folder permission changes in the server\\s Security event log. Task Category is File System.

References:

<http://social.technet.microsoft.com/Forums/en-US/winservergen/thread/13779c78-0c73-4477-8014-f2eb10f3f10f/>

[http://technet.microsoft.com/en-us/library/cc753927\(v=ws.10\).aspx](http://technet.microsoft.com/en-us/library/cc753927(v=ws.10).aspx) <http://social.technet.microsoft.com/Forums/en-US/winservergen/thread/13779c78-0c73-4477-8014-f2eb10f3f10f/> <http://support.microsoft.com/kb/300549>

<http://www.windowsitpro.com/article/permissions/auditing-folder-permission-changes> <http://www.windowsitpro.com/article/permissions/auditing-permission-changes-on-a-folder>

[70-411 Practice Test](#)

[70-411 Study Guide](#)

[70-411 Braindumps](#)



To Read the [Whole Q&As](#), please purchase the [Complete Version](#) from [Our website](#).

## Try our product !

100% Guaranteed Success

100% Money Back Guarantee

365 Days Free Update

Instant Download After Purchase

24x7 Customer Support

Average 99.9% Success Rate

More than 800,000 Satisfied Customers Worldwide

Multi-Platform capabilities - [Windows](#), [Mac](#), [Android](#), [iPhone](#), [iPod](#), [iPad](#), [Kindle](#)

We provide exam PDF and VCE of Cisco, Microsoft, IBM, CompTIA, Oracle and other IT Certifications. You can view Vendor list of All Certification Exams offered:

<https://www.lead4pass.com/allproducts>

## Need Help

Please provide as much detail as possible so we can best assist you.

To update a previously submitted ticket:



 <p><b>One Year Free Update</b> Free update is available within One Year after your purchase. After One Year, you will get 50% discounts for updating. And we are proud to boast a 24/7 efficient Customer Support system via Email.</p>	 <p><b>Money Back Guarantee</b> To ensure that you are spending on quality products, we provide 100% money back guarantee for 30 days from the date of purchase.</p>	 <p><b>Security &amp; Privacy</b> We respect customer privacy. We use McAfee's security service to provide you with utmost security for your personal information &amp; peace of mind.</p>
---	---	--

Any charges made through this site will appear as Global Simulators Limited.

All trademarks are the property of their respective owners.

Copyright © lead4pass, All Rights Reserved.