



70-411^{Q&As}

Administering Windows Server 2012

Pass Microsoft 70-411 Exam with 100% Guarantee

Free Download Real Questions & Answers **PDF** and **VCE** file from:

<https://www.lead4pass.com/70-411.html>

100% Passing Guarantee
100% Money Back Assurance

Following Questions and Answers are all new published by Microsoft
Official Exam Center

-  **Instant Download** After Purchase
-  **100% Money Back** Guarantee
-  **365 Days** Free Update
-  **800,000+** Satisfied Customers





QUESTION 1

A technician installs a new server that runs Windows Server 2012 R2.

During the installation of Windows Server Update Services (WSUS) on the new server, the technician reports that on the Choose Languages page of the Windows Server Update Services Configuration Wizard, the only available language is

English.

The technician needs to download updates in French and English.

What should you tell the network technician to do to ensure that the required updates are available?

- A. Complete the Windows Server Update Services Configuration Wizard, and then modify the update language on the server.
- B. Uninstall all instances of the Windows Internal Database.
- C. Change the update languages on the upstream server.
- D. Change the System Local of the server to French.

Correct Answer: C

Explanation: Configure upstream servers to synchronize updates in all languages that are required by downstream replica servers. You will not be notified of needed updates in the unsynchronized languages. The Choose Languages page of the WSUS Configuration Wizard allows you to get updates from all languages or from a subset of languages. Selecting a subset of languages saves disk space, but it is important to choose all the languages that are needed by all the downstream servers and client computers of a WSUS server. Downstream servers and client computers will not receive all the updates they need if you have not selected all the necessary languages for the upstream server. Make sure you select all the languages that will be needed by all the client computers of all the downstream servers. You should generally download updates in all languages on the root WSUS server that synchronizes to Microsoft Update. This selection guarantees that all downstream servers and client computers will receive updates in the languages that they require. To choose update languages for a downstream server: If the upstream server has been configured to download update files in a subset of languages: In the WSUS Configuration Wizard, click Download updates only in these languages (only languages marked with an asterisk are supported by the upstream server), and then select the languages for which you want updates. [https://technet.microsoft.com/en-us/library/hh328568\(v=ws.10\).aspx](https://technet.microsoft.com/en-us/library/hh328568(v=ws.10).aspx)

QUESTION 2

You have a server named Server1 that runs Windows Server 2012 R2. Server1 has the File Server Resource Manager role service installed.

Server1 has a folder named Folder1 that is used by the human resources department.

You need to ensure that an email notification is sent immediately to the human resources manager when a user copies an audio file or a video file to Folder1.

What should you configure on Server1?

- A. a storage report task



- B. a file screen exception
- C. a file screen
- D. a file group

Correct Answer: C

Create file screens to control the types of files that users can save, and generate notifications when users attempt to save unauthorized files. With File Server Resource Manager (FSRM) you can create file screens that prevent users from

saving unauthorized files on volumes or folders.

File Screen Enforcement:

You can create file screens to prevent users from saving unauthorized files on volumes or folders. There are two types of file screen enforcement: active and passive enforcement. Active file screen enforcement does not allow the user to

save an unauthorized file. Passive file screen enforcement allows the user to save the file, but notifies the user that the file is not an authorized file. You can configure notifications, such as events logged to the event log or e-mails sent to

users and administrators, as part of active and passive file screen enforcement.

QUESTION 3

HOTSPOT

Your network contains one Active Directory domain named contoso.com. The domain contains 10 file servers that run Windows Server 2012 R2.

You plan to enable BitLocker Drive Encryption (BitLocker) for the operating system drives of the file servers.

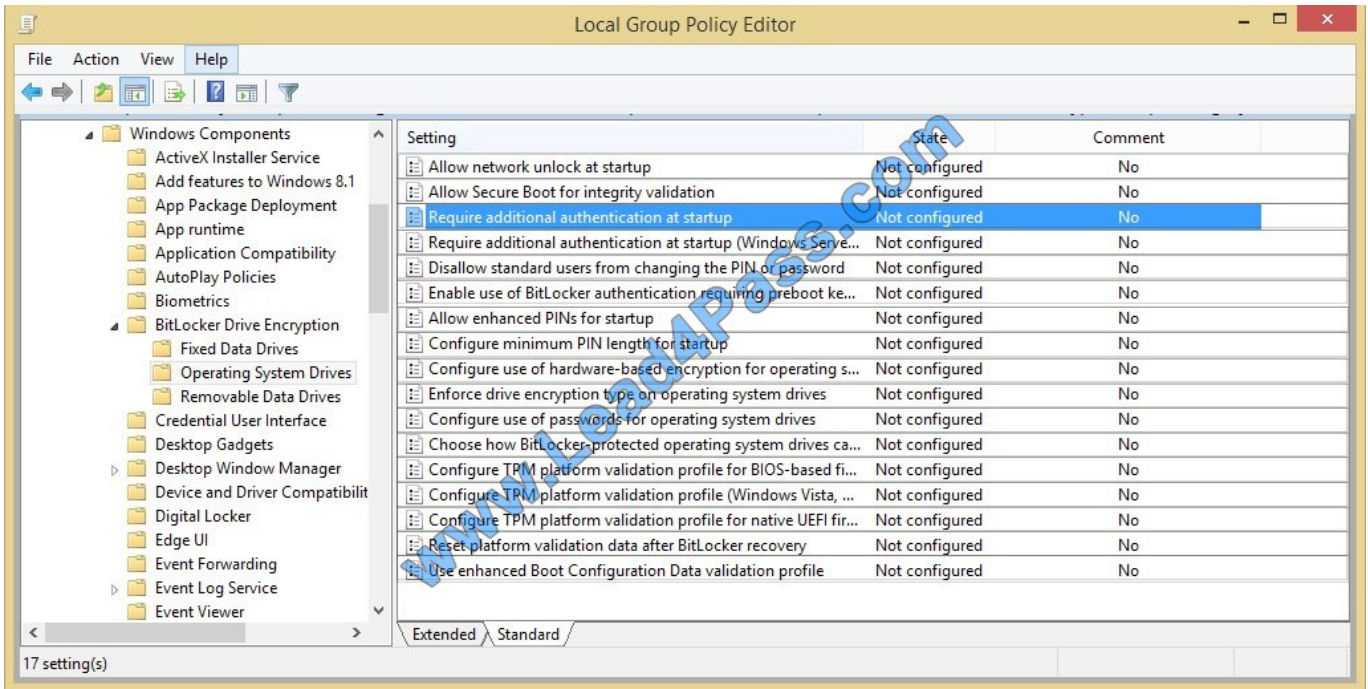
You need to configure BitLocker policies for the file servers to meet the following requirements:

Ensure that all of the servers use a startup PIN for operating system drives encrypted with BitLocker.

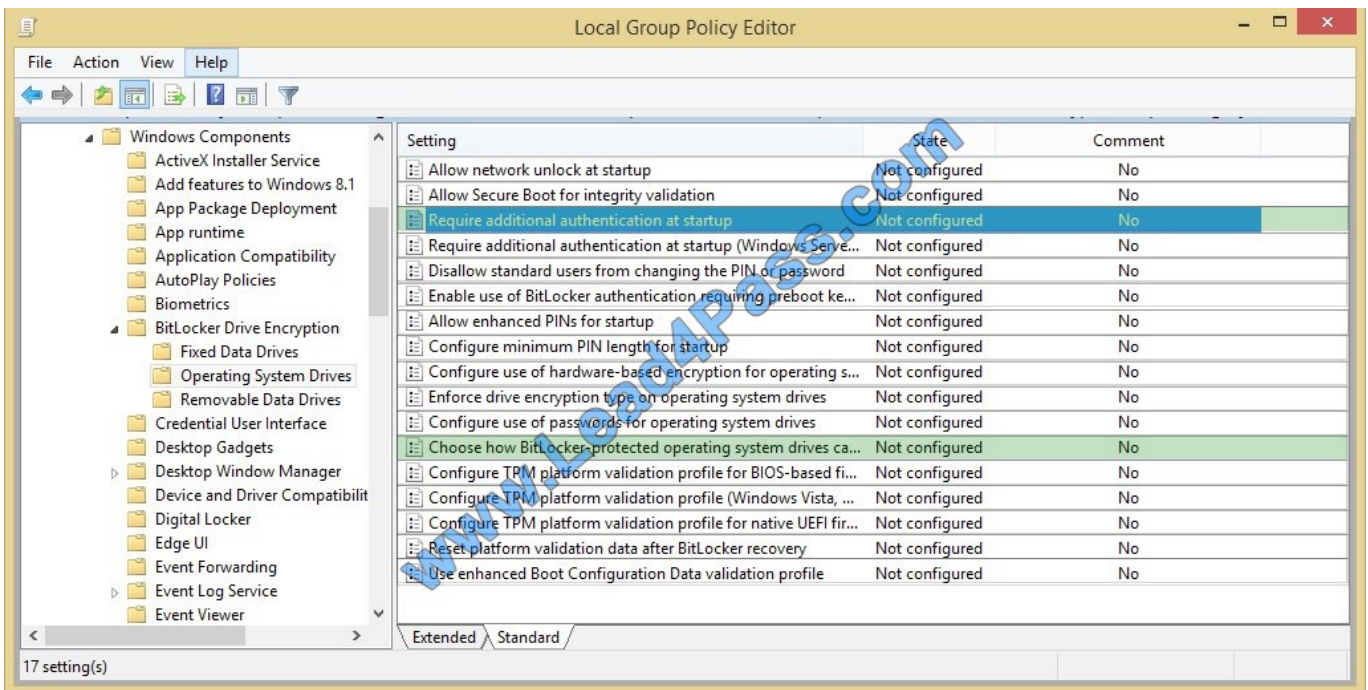
Ensure that the BitLocker recovery key and recovery password are stored in Active Directory.

Which two Group Policy settings should you configure? To answer, select the appropriate settings in the answer area.

Hot Area:



Correct Answer:



Explanation:

* Choice 1: Require additional authentication at startup This policy setting is used to control which unlock options are available for operating system drives. You can set this option to Require startup PIN with TPM
Choice 2: Choose how BitLocker-protected operating system drives can be recovered This policy setting is used to configure recovery methods for operating system drives.

In Save BitLocker recovery information to Active Directory Domain Services, choose which BitLocker recovery information to store in Active Directory Domain Services (AD DS) for operating system drives. If you select Store recovery



password and key packages, the BitLocker recovery password and the key package are stored in AD DS. Storing the key package supports recovering data from a drive that is physically corrupted. If you select Store recovery password only,

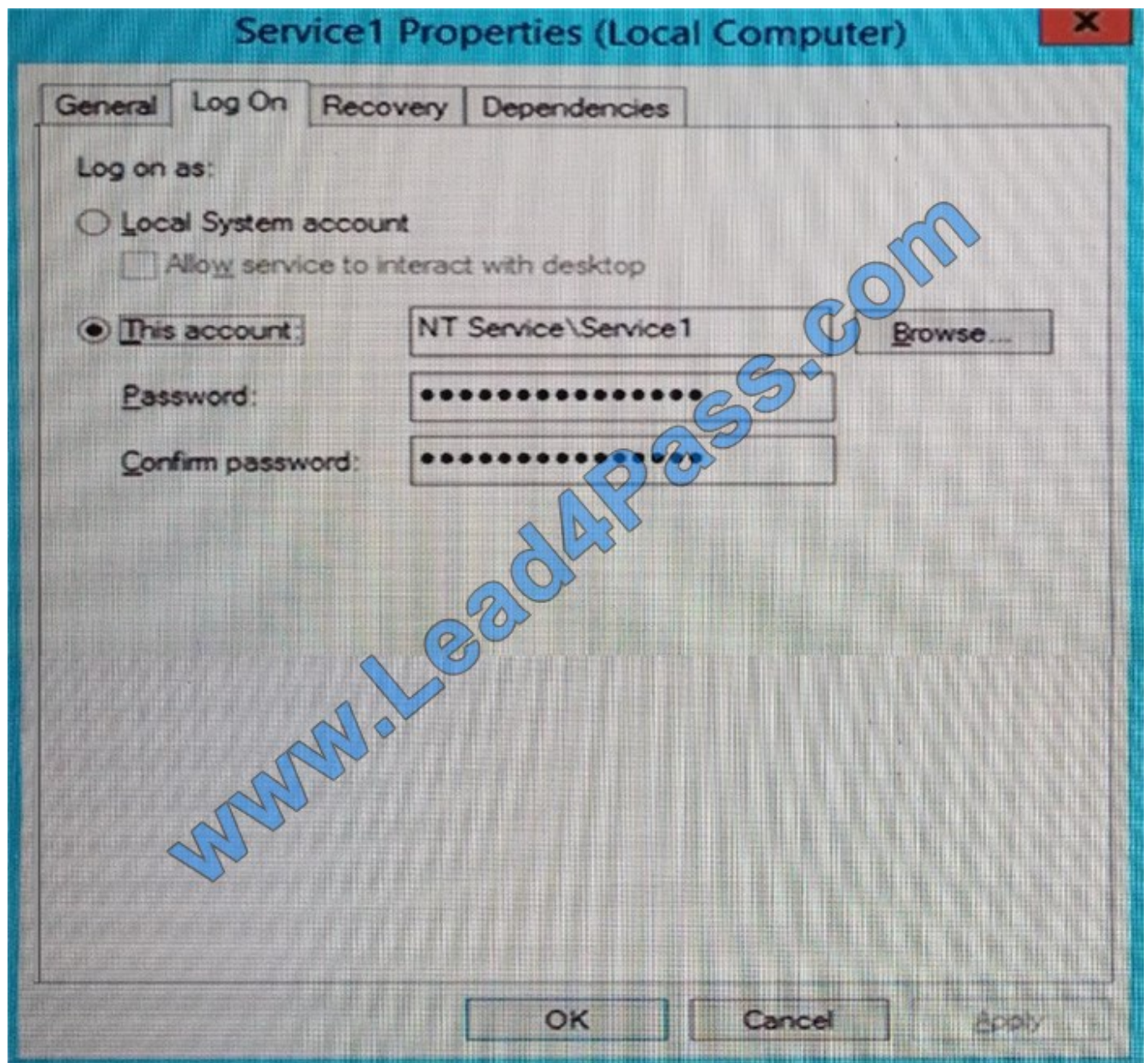
only the recovery password is stored in AD DS.

Reference: BitLocker Group Policy Settings

https://technet.microsoft.com/en-us/library/jj679890.aspx#BKMK_unlockpol1

QUESTION 4

You have a server named Server1 that is a member of a domain named contoso.com. You view the properties of a service on Server1 as shown in the graphic.





Use the drop-down menus to select the answer choice that completes each statement.

NOTE: Each correct selection is worth one point.

Hot Area:

Answer Area

Service1 is configured to use [answer choice].

	▼
a local user account	
a Managed Service Account	
a virtual account	

When accessing network resources, Service1 will use the identity of [answer choice].

	▼
the computer account	
a domain user account	
the Local System account	
a local user account	

Correct Answer:

Answer Area

Service1 is configured to use [answer choice].

	▼
a local user account	
a Managed Service Account	
a virtual account	

When accessing network resources, Service1 will use the identity of [answer choice].

	▼
the computer account	
a domain user account	
the Local System account	
a local user account	

References:

[https://msdn.microsoft.com/en-us/library/ms677272\(v=vs.85\).aspx](https://msdn.microsoft.com/en-us/library/ms677272(v=vs.85).aspx) [https://msdn.microsoft.com/en-us/library/ms675915\(v=vs.85\).aspx](https://msdn.microsoft.com/en-us/library/ms675915(v=vs.85).aspx)

Virtual accounts are "managed local accounts" that provide the following features to simplify service administration:

- No password management is required.
- The ability to access the network with a computer identity in a domain environment.



Virtual accounts require very little management. They cannot be created or deleted, nor do they require any password management.

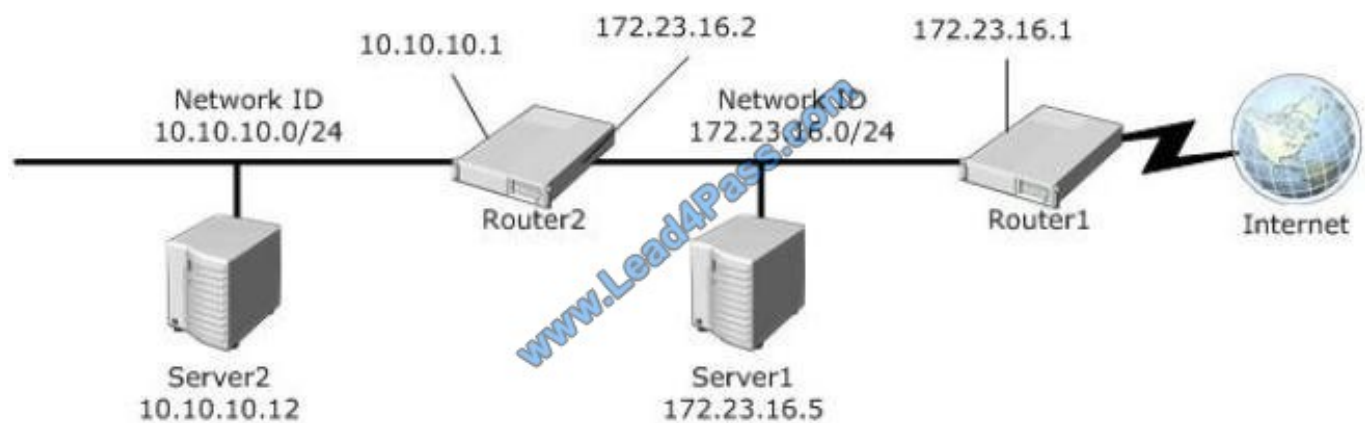
You must be a member of the Administrators group on the local computer to perform the following procedures. To configure a service to use a virtual account:

- Click Start, point to Administrative Tools, and then click Services.
- In the details pane, right-click the service that you want to configure, and then click Properties.
- Click the Log On tab, click This account, and then type NT SERVICE\ServiceName. When you are finished, click OK.
- Restart the service for the change to take effect.

[https://technet.microsoft.com/en-us/library/dd548356%20\(v=WS.10\).aspx](https://technet.microsoft.com/en-us/library/dd548356%20(v=WS.10).aspx)

QUESTION 5

Your network is configured as shown in the exhibit. (Click the Exhibit button.)



Server1 regularly accesses Server2.

You discover that all of the connections from Server1 to Server2 are routed through Router1.

You need to optimize the connection path from Server1 to Server2.

Which route command should you run on Server1?

- A. Route add -p 192.168.2.0 MASK 255.255.255.0 192.168.2.1 METRIC 50
- B. Route add -p 192.168.2.12 MASK 255.255.255.0 192.168.2.1 METRIC 100
- C. Route add -p 192.168.2.12 MASK 255.255.255.0 192.168.2.0 METRIC 50
- D. Route add -p 192.168.2.0 MASK 255.255.255.0 192.168.1.2 METRIC 100

Correct Answer: D



To Read the [Whole Q&As](#), please purchase the [Complete Version](#) from [Our website](#).

Try our product !

100% Guaranteed Success

100% Money Back Guarantee

365 Days Free Update

Instant Download After Purchase

24x7 Customer Support

Average 99.9% Success Rate

More than 800,000 Satisfied Customers Worldwide

Multi-Platform capabilities - [Windows](#), [Mac](#), [Android](#), [iPhone](#), [iPod](#), [iPad](#), [Kindle](#)

We provide exam PDF and VCE of Cisco, Microsoft, IBM, CompTIA, Oracle and other IT Certifications. You can view Vendor list of All Certification Exams offered:

<https://www.lead4pass.com/allproducts>

Need Help

Please provide as much detail as possible so we can best assist you.

To update a previously submitted ticket:



 <p>One Year Free Update Free update is available within One Year after your purchase. After One Year, you will get 50% discounts for updating. And we are proud to boast a 24/7 efficient Customer Support system via Email.</p>	 <p>Money Back Guarantee To ensure that you are spending on quality products, we provide 100% money back guarantee for 30 days from the date of purchase.</p>	 <p>Security & Privacy We respect customer privacy. We use McAfee's security service to provide you with utmost security for your personal information & peace of mind.</p>
---	---	--

Any charges made through this site will appear as Global Simulators Limited.

All trademarks are the property of their respective owners.

Copyright © lead4pass, All Rights Reserved.