



70-410^{Q&As}

Installing and Configuring Windows Server 2012

Pass Microsoft 70-410 Exam with 100% Guarantee

Free Download Real Questions & Answers **PDF** and **VCE** file from:

<https://www.lead4pass.com/70-410.html>

100% Passing Guarantee
100% Money Back Assurance

Following Questions and Answers are all new published by Microsoft
Official Exam Center

-  **Instant Download** After Purchase
-  **100% Money Back** Guarantee
-  **365 Days** Free Update
-  **800,000+** Satisfied Customers





QUESTION 1

You have a server named Server1 that runs Windows Server 2012 R2. You add a 4-TB disk named Disk 5 to Server1.

You need to ensure that you can create a 3-TB volume on Disk 5.

What should you do?

- A. Create a storage pool.
- B. Convert the disk to a dynamic disk.
- C. Create a VHD, and then attach the VHD.
- D. Convert the disk to a GPT disk.

Correct Answer: D

MBR max is 2TB, the disk must be GPT For any hard drive over 2TB, we need to use GPT partition. If you have a disk larger than 2TB size, the rest of the disk space will not be used unless you convert it to GPT. An existing MBR partition can't be converted to GPT unless it is completely empty; you must either delete everything and convert or create the partition as GPT. It is not possible to boot to a GPT partition, impossible to convert MBR to GPT without data loss.

QUESTION 2

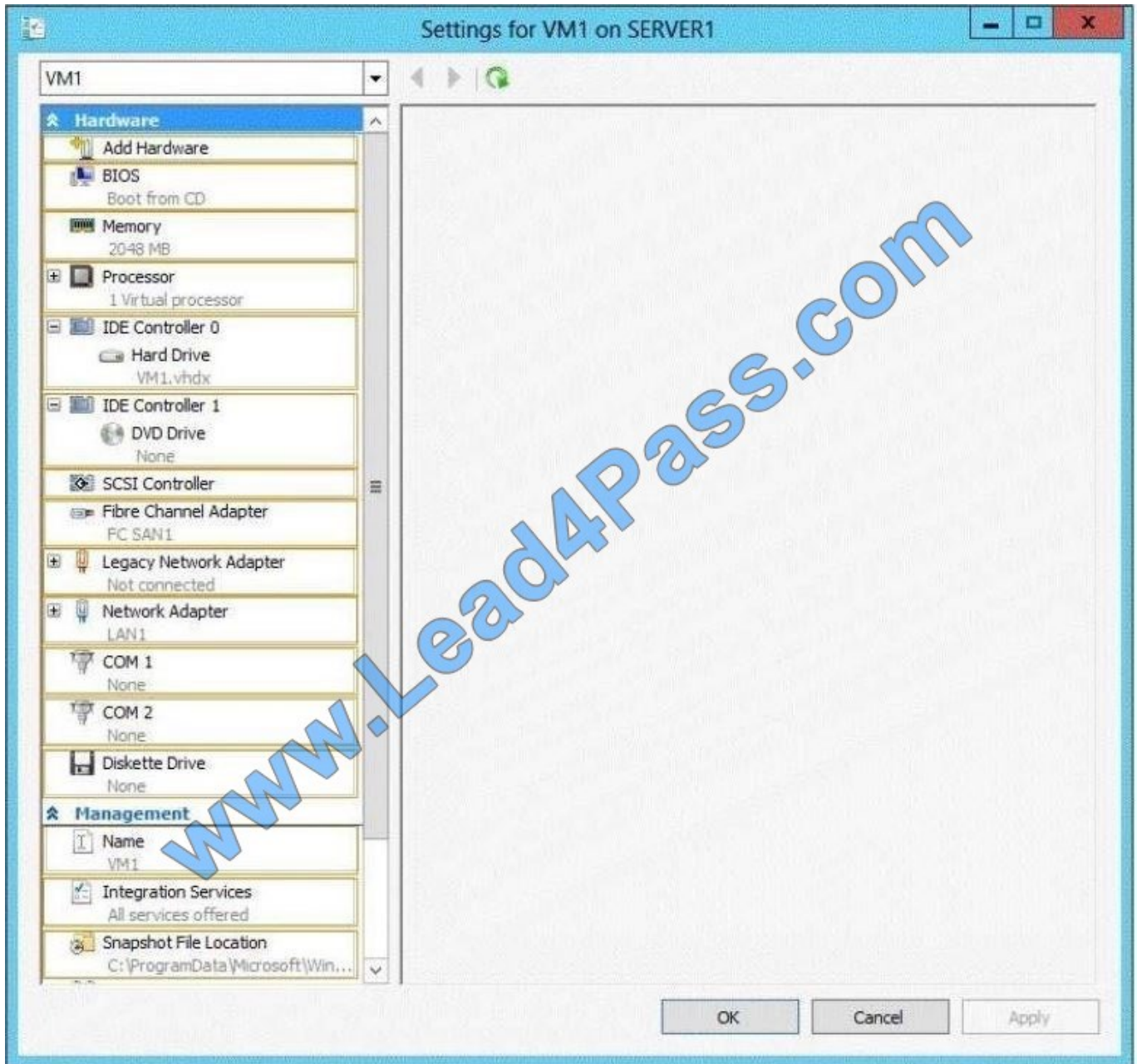
Your network contains an Active Directory domain named contoso.com. Technicians use Windows Deployment Services (WDS) to deploy Windows Server 2012 R2. The network contains a server named Server1 that runs Windows Server

2012 R2. Server1 has the Hyper-V server role installed. You need to ensure that you can use WDS to deploy Windows Server 2012 R2 to a virtual machine named VM1.

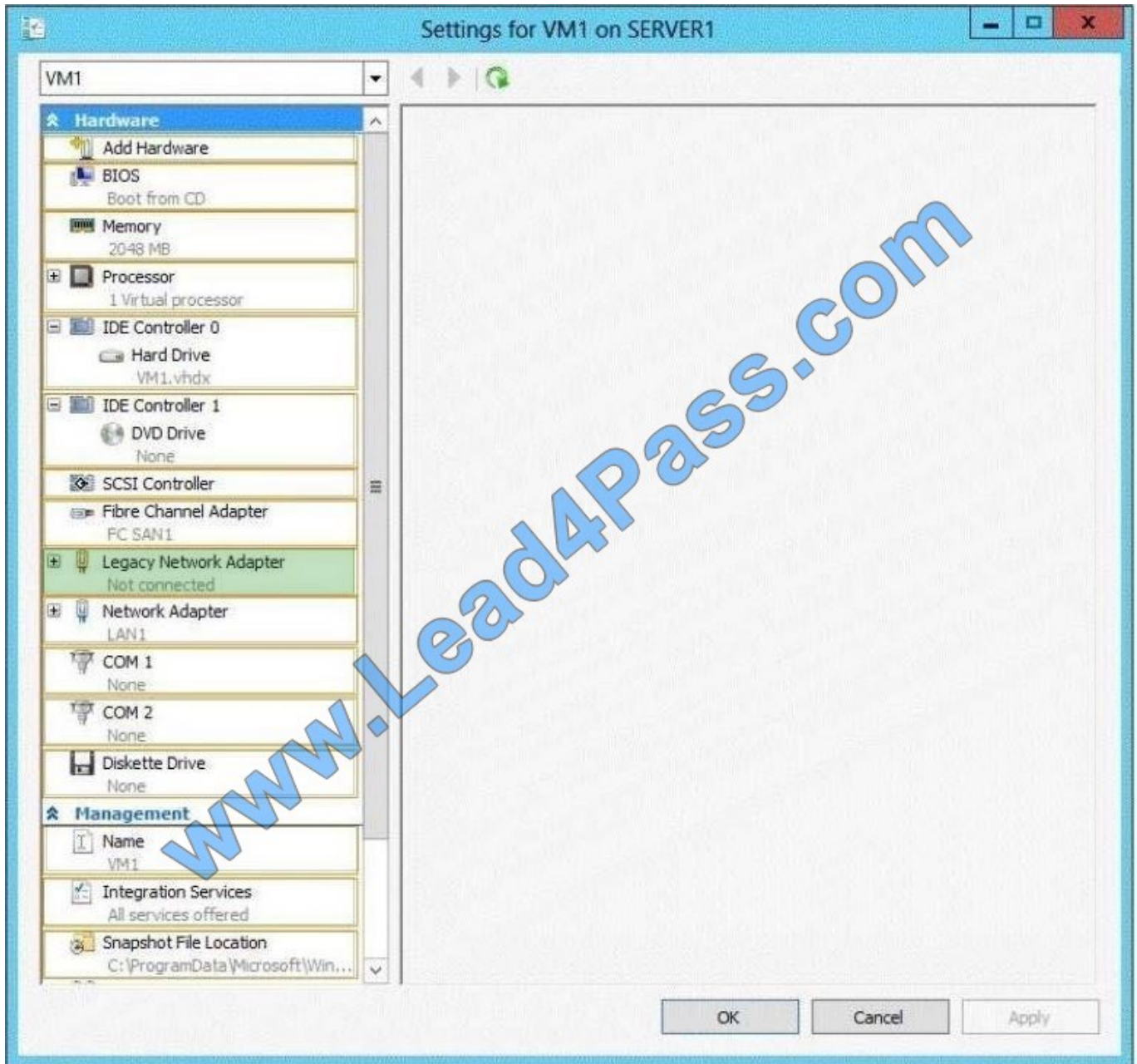
Which settings should you configure?

To answer, select the appropriate settings in the answer area.

Hot Area:



Correct Answer:



WDS Allows network-based installation of Windows operating systems, which reduces the complexity and cost when compared to manual installations. Thus you should configure the appropriate network settings. Reference: <http://technet.microsoft.com/en-us/library/hh831764.aspx>

QUESTION 3

Your network contains three servers. The servers are configured as shown in the following table.



Server name	CPU type	Operating system	Installation type
Server1	x86	32-bit Windows Server 2008 Service Pack 2 (SP2)	Full
Server2	X86	32-bit Windows Server 2008 Service Pack 2 (SP2)	Server Core
Server3	x64	64-bit Windows Server 2008 R2	Full

Your company plans to standardize all of the servers on Windows Server 2012 R2. You need to recommend an upgrade path for each server. The solution must meet the following requirements:

- Upgrade the existing operating system whenever possible.
- Minimize hardware purchases.

Which upgrade path should you recommend for each server?

To answer, drag the appropriate upgrade path to each server in the answer area. Each upgrade path may be used once, more than once, or not at all.

Select and Place:

Click here to enter text.

Clean installation on new hardware

Clean installation on existing hardware

Upgrade on existing hardware

Answer Area

Server1

Server2

Server3

Correct Answer:

Click here to enter text.

Clean installation on new hardware

Clean installation on existing hardware

Upgrade on existing hardware

Answer Area

Server1

Clean installation on new hardware

Server2

Clean installation on new hardware

Server3

Upgrade on existing hardware

Upgrade paths for Windows Server 2012 R2 are limited. In fact, it's easier to specify when you can perform an upgrade than when you can't. If you have a 64-bit computer running Windows Server 2008 or Windows Server 2008 R2, then you can upgrade it to Windows Server 2012 R2 as long as you use the same operating system edition. Windows Server 2012 R2 does not support the following:

- Upgrades from Windows Server versions prior to Windows Server 2008
- Upgrades from pre-RTM editions of Windows Server 2012 R2
- Upgrades from Windows workstation operating systems
- Cross-platform upgrades, such as 32-bit Windows Server 2008 to 64-bit Windows Server 2012
- Upgrades from any Itanium edition
- Cross-language upgrades, such as from Windows Server 2008, U.S.English to Windows Server 2012,

70-410 Practice Test | 70-410 Exam Questions | 70-410 Braindumps

5 / 7



French In any of these cases, the Windows Setup program will not permit the upgrade to proceed. References:
<http://technet.microsoft.com/en-us/library/jj134246.aspx>

QUESTION 4

You have a server named Server1 that runs Windows Server 2012 R2.

On Server1, you create a local user named User1.

You need to create a Group Policy object (GPO) that will apply only to User1.

What should you use?

- A. the Computer Management console
- B. the Group Policy management console
- C. the Group Policy Object Editor console
- D. the New-GPO cmdlet and the Set-GPPermission cmdlet.

Correct Answer: B

References: <https://www.petri.com/how-to-create-and-link-a-group-policy-object-in-active-directory>

QUESTION 5

Which of the following are the two built-in user accounts created automatically on a computer running Windows Server 2012 R2?

- A. Network
- B. Interactive
- C. Administrator
- D. Guest

Correct Answer: CD

C. Correct: By default, the two built-in user accounts created on a computer running Windows Server 2012 are the Administrator account and the Guest account. D. Correct: By default, the two built-in user accounts created on a computer running Windows Server 2012 are the Administrator account and the Guest account.

Incorrect Answers:

A: There is no Network account in Windows Server 2012 R2.

B: There is no Interactive account in Windows Server 2012 R2.



To Read the [Whole Q&As](#), please purchase the [Complete Version](#) from [Our website](#).

Try our product !

100% Guaranteed Success

100% Money Back Guarantee

365 Days Free Update

Instant Download After Purchase

24x7 Customer Support

Average 99.9% Success Rate

More than 800,000 Satisfied Customers Worldwide

Multi-Platform capabilities - [Windows](#), [Mac](#), [Android](#), [iPhone](#), [iPod](#), [iPad](#), [Kindle](#)

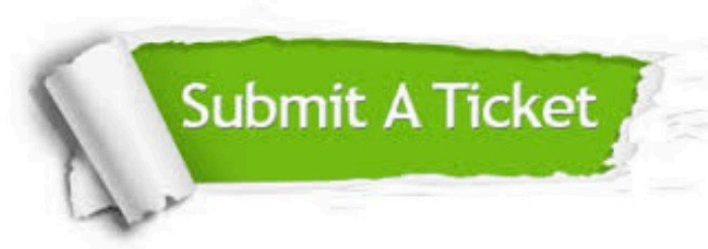
We provide exam PDF and VCE of Cisco, Microsoft, IBM, CompTIA, Oracle and other IT Certifications. You can view Vendor list of All Certification Exams offered:

<https://www.lead4pass.com/allproducts>

Need Help

Please provide as much detail as possible so we can best assist you.

To update a previously submitted ticket:



 <p>One Year Free Update Free update is available within One Year after your purchase. After One Year, you will get 50% discounts for updating. And we are proud to boast a 24/7 efficient Customer Support system via Email.</p>	 <p>Money Back Guarantee To ensure that you are spending on quality products, we provide 100% money back guarantee for 30 days from the date of purchase.</p>	 <p>Security & Privacy We respect customer privacy. We use McAfee's security service to provide you with utmost security for your personal information & peace of mind.</p>
---	---	--

Any charges made through this site will appear as Global Simulators Limited.

All trademarks are the property of their respective owners.

Copyright © lead4pass, All Rights Reserved.