



70-410^{Q&As}

Installing and Configuring Windows Server 2012

Pass Microsoft 70-410 Exam with 100% Guarantee

Free Download Real Questions & Answers **PDF** and **VCE** file from:

<https://www.lead4pass.com/70-410.html>

100% Passing Guarantee
100% Money Back Assurance

Following Questions and Answers are all new published by Microsoft
Official Exam Center

-  **Instant Download** After Purchase
-  **100% Money Back** Guarantee
-  **365 Days** Free Update
-  **800,000+** Satisfied Customers



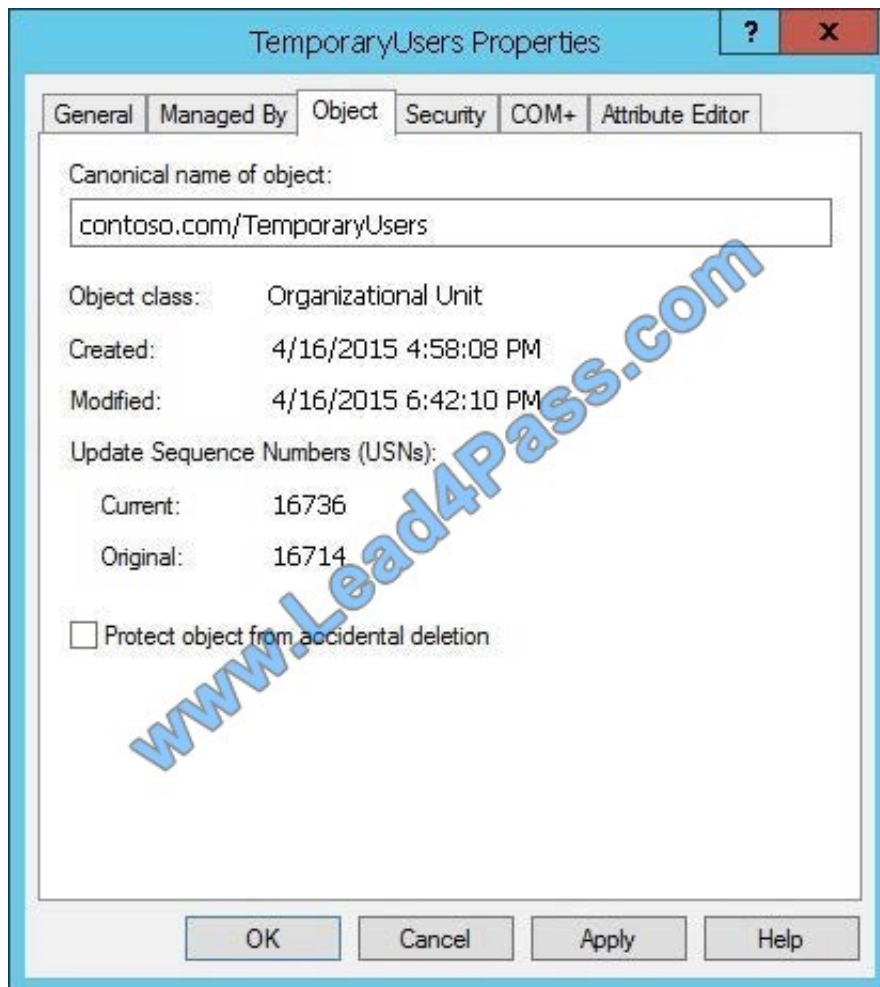


QUESTION 1

Your network contains one Active Directory forest named contoso.com. The forest contains a single domain. All domain controllers run Windows Server 2012 R2.

The domain contains an organizational unit (OU) named TemporaryUsers that only contains 50 user accounts for temporary employees. The users are members of a global group named TempUsers.

The TemporaryUsers OU is configured as shown in the exhibit. (Click the exhibit button.)



You need to delete all of the user accounts of the temporary employees.

What Windows PowerShell command should you run? To answer, select the appropriate options in the answer area.

Hot Area:



Answer Area

Remove-ADGroup	-identity "OU=temporaryUsers,dc=contoso,dc=com"	-confirm:\$false
Remove-ADOrganizationalUnit	-identity tempusers@contoso.com	-confirm:\$true
Remove-ADUser	-partition OU=temporaryUsers	-name *.*
		-recursive

Correct Answer:

Answer Area

Remove-ADGroup	-identity "OU=temporaryUsers,dc=contoso,dc=com"	-confirm:\$false
Remove-ADOrganizationalUnit	-identity tempusers@contoso.com	-confirm:\$true
Remove-ADUser	-partition OU=temporaryUsers	-name *.*
		-recursive

QUESTION 2

You work as a senior administrator at Contoso.com. The Contoso.com network consists of a single domain named Contoso.com. All servers on the Contoso.com network have Windows Server 2012 R2 installed.

You are running a training exercise for junior administrators. You are currently discussing connection security rules.

Which of the following is TRUE with regards to connection security rules? (Choose all that apply.)

- A. Connection security rules allows for traffic to be secured via IPsec.
- B. Connection security rules do not allow the traffic through the firewall.
- C. Connection security rules are applied to programs or services.
- D. Connection security rules are applied between two computers.

Correct Answer: ABD

Connection security involves the authentication of two computers before they begin communications and the securing of information sent between two computers. Windows Firewall with Advanced Security uses Internet Protocol security (IPsec) to achieve connection security by using key exchange, authentication, data integrity, and, optionally, data encryption. How firewall rules and connection security rules are related Firewall rules allow traffic through the firewall, but do not secure that traffic. To secure traffic with IPsec, you can create Computer Connection Security rules. However, the creation of a connection security rule does not allow the traffic through the firewall. You must create a firewall rule to do this, if the traffic is not allowed by the default behavior of the firewall. Connection security rules are not applied to programs or services; they are applied between the computers that make up the two endpoints.

QUESTION 3



You have a server that runs Windows Server 2012 R2.

You need to create a volume that will remain online if two disks in the volume fail.

The solution must minimize the number of disks used to create the volume.

Which three actions should you perform in sequence? (Choose three.)

- A. Add five physical disks
- B. Create a storage space and set the disk allocation of one of the disks to "Hot Spare"
- C. Create a virtual disk
- D. Create a storage space by using the default disk allocation
- E. Add three physical disks

Correct Answer: ACD

A storage space with three-way mirroring can tolerate two disk failures but requires a minimum of five disks.

References: <http://technet.microsoft.com/en-us/library/hh831739.aspx> <http://technet.microsoft.com/en-us/library/jj822938.aspx> <http://technet.microsoft.com/en-us/library/jj899886.aspx> <http://technet.microsoft.com/en-us/library/5de72fb5-e1e3-43a7-a176-d17cdf4d312e>

QUESTION 4

Your network contains an Active Directory domain named contoso.com. The domain contains a single location named Site1. The domain contains a server named Server1 that has the DHCP Server server role installed. All client computers

receive their IPv4 configurations dynamically. The domain will expand to include a second location named Site2. A server named Server2 will be deployed to Site2. Site1 and Site2 will connect to each other by using a WAN link. You need to

ensure that the clients in both sites receive their IPv4 configurations from Server1. In the table below, identify which actions must be performed on each server.

Make only one selection in each row. Each correct selection is worth one point.

Hot Area:



	Server1	Server2
Create a new scope.	<input type="checkbox"/>	<input type="checkbox"/>
Add a routing protocol.	<input type="checkbox"/>	<input type="checkbox"/>
Install the Remote Access server role.	<input type="checkbox"/>	<input type="checkbox"/>

Correct Answer:

	Server1	Server2
Create a new scope.	<input checked="" type="checkbox"/>	<input type="checkbox"/>
Add a routing protocol.	<input type="checkbox"/>	<input checked="" type="checkbox"/>
Install the Remote Access server role.	<input type="checkbox"/>	<input checked="" type="checkbox"/>

<http://technet.microsoft.com/library/hh831416> <http://technet.microsoft.com/en-us/library/dd469766%28v=WS.10%29.aspx> Exam Reference: 70-410: Installing and Configuring Windows Server 2012 R2, Chapter4: Deploying and configuring core network services, Objective 4.1: Configure IPv4 and IPv6 addressing, p.192, 196

QUESTION 5

Your network contains an Active Directory domain named contoso.com.

You create a software restriction policy to allow an application named App1 by using a certificate rule.

You need to ensure that when users attempt to execute App1, the certificate for App1 is verified against a certificate revocation list (CRL).

What should you do?

A. Modify the rule for App1.



- B. Modify the Trusted Publishers Properties.
- C. Create a new certificate rule for App1.
- D. Modify the Enforcement Properties.

Correct Answer: B

[70-410 PDF Dumps](#)

[70-410 Practice Test](#)

[70-410 Study Guide](#)



To Read the [Whole Q&As](#), please purchase the [Complete Version](#) from [Our website](#).

Try our product !

100% Guaranteed Success

100% Money Back Guarantee

365 Days Free Update

Instant Download After Purchase

24x7 Customer Support

Average 99.9% Success Rate

More than 800,000 Satisfied Customers Worldwide

Multi-Platform capabilities - [Windows](#), [Mac](#), [Android](#), [iPhone](#), [iPod](#), [iPad](#), [Kindle](#)

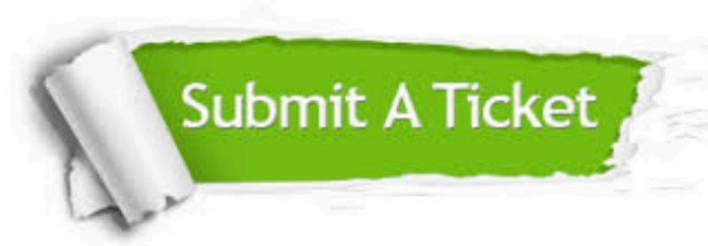
We provide exam PDF and VCE of Cisco, Microsoft, IBM, CompTIA, Oracle and other IT Certifications. You can view Vendor list of All Certification Exams offered:

<https://www.lead4pass.com/allproducts>

Need Help

Please provide as much detail as possible so we can best assist you.

To update a previously submitted ticket:



 <p>One Year Free Update Free update is available within One Year after your purchase. After One Year, you will get 50% discounts for updating. And we are proud to boast a 24/7 efficient Customer Support system via Email.</p>	 <p>Money Back Guarantee To ensure that you are spending on quality products, we provide 100% money back guarantee for 30 days from the date of purchase.</p>	 <p>Security & Privacy We respect customer privacy. We use McAfee's security service to provide you with utmost security for your personal information & peace of mind.</p>
---	---	--

Any charges made through this site will appear as Global Simulators Limited.

All trademarks are the property of their respective owners.

Copyright © lead4pass, All Rights Reserved.