



# 70-410<sup>Q&As</sup>

Installing and Configuring Windows Server 2012

## Pass Microsoft 70-410 Exam with 100% Guarantee

Free Download Real Questions & Answers **PDF** and **VCE** file from:

<https://www.lead4pass.com/70-410.html>

100% Passing Guarantee  
100% Money Back Assurance

Following Questions and Answers are all new published by Microsoft  
Official Exam Center

-  **Instant Download** After Purchase
-  **100% Money Back** Guarantee
-  **365 Days** Free Update
-  **800,000+** Satisfied Customers





### QUESTION 1

Your network contains two servers named Server1 and Server2 that run Windows Server 2012 R2. You need to install the Remote Desktop Services server role on Server2 remotely from Server1. Which tool should you use?

- A. The dsadd.exe command
- B. The Server Manager console
- C. The Remote Desktop Gateway Manager console
- D. The Install-RemoteAccess cmdlet

Correct Answer: B

---

### QUESTION 2

Your network contains multiple subnets.

On one of the subnets, you deploy a server named Server1 that runs Windows Server 2012 R2.

You install the DNS Server server role on Server1, and then you create a standard primary zone named contoso.com.

You need to ensure that client computers can resolve single-label names to IP addresses.

What should you do first?

- A. Create a reverse lookup zone.
- B. Convert the contoso.com zone to an Active Directory-integrated zone.
- C. Configure dynamic updates for contoso.com.
- D. Create a GlobalNames zone.

Correct Answer: B

Although a GlobalNames zone is required in order to resolve single-label names, GNZs must be AD-integrated.

Since this is a standard primary zone (as opposed to an ADDS primary zone), we must first integrate the zone into Active Directory.

References:

Exam Ref: 70-410: Installing and Configuring Windows Server 2012 R2, Chapter4: Deploying and configuring core network services, Objective 4.3: Deploy and Configure the DNS service, p.233 <http://technet.microsoft.com/en-us/library/>

cc731744.aspx

---

### QUESTION 3

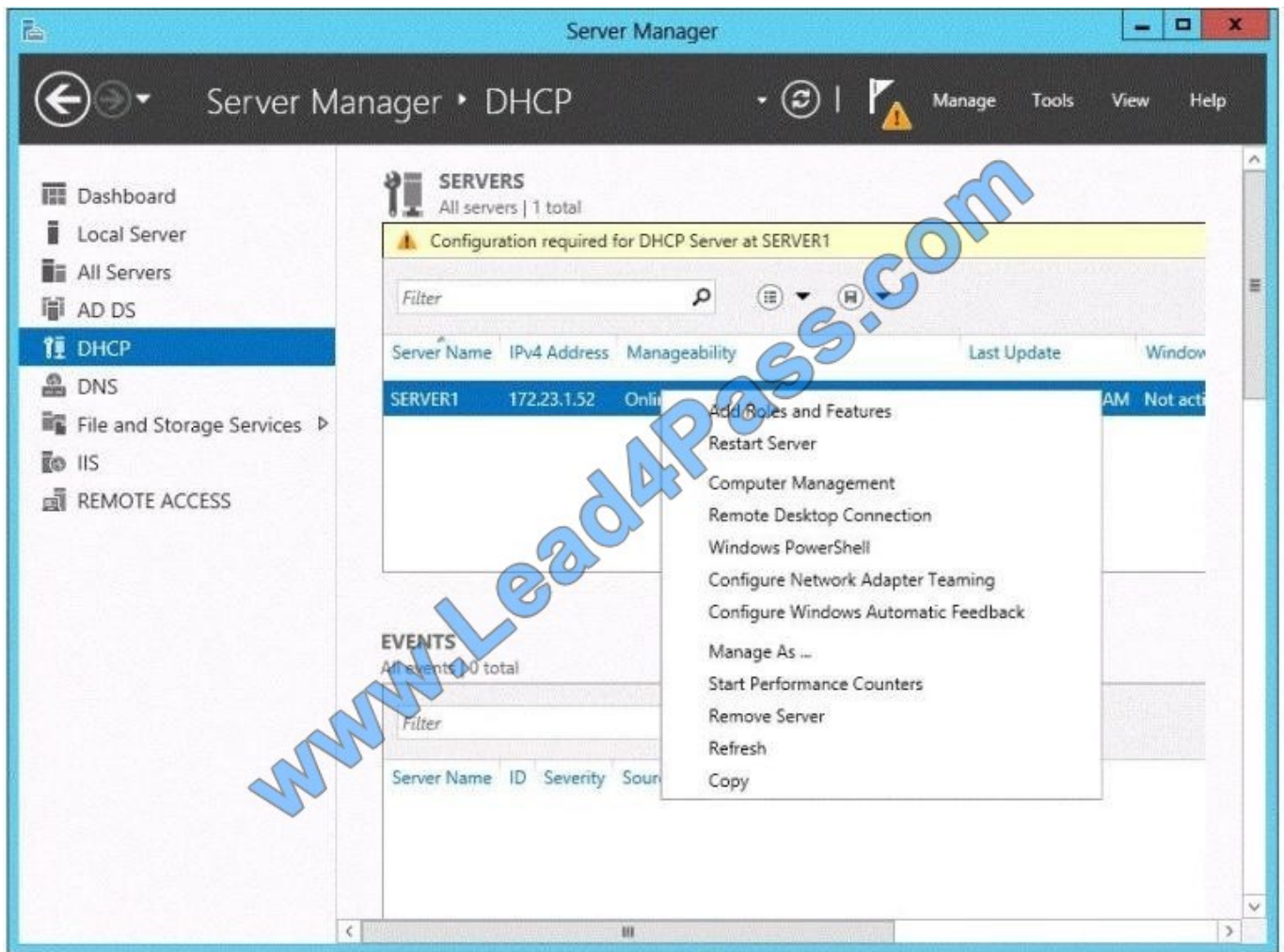


Your network contains an Active Directory domain named adatum.com. The domain contains a member server named Server1 and a domain controller named DC2. All servers run Windows Server 2012 R2.

On DC2, you open Server Manager and you add Server1 as another server to manage. From Server Manager on DC2, you right-click Server1 as shown in the exhibit.

You need to ensure that when you right-click Server1, you see the option to run the DHCP console.

What should you do?



- A. On Server1, install the Feature Administration Tools.
- B. In the domain, add DC1 to the DHCP Administrators group.
- C. On DC2 and Server1, run winrm quickconfig.
- D. On DC2, install the Role Administration Tools.

Correct Answer: D

#### QUESTION 4



Your network contains two subnets. The subnets are configured as shown in the following table.

Subnet name	Network IP address
LAN1	10.10.1.0/24
LAN2	10.11.1.0/24

You have a server named Server1 that runs Windows Server 2012 R2. Server1 is connected to LAN1. You run the route print command as shown in the exhibit. (Click the Exhibit button.)

```
Administrator: Windows PowerShell
PS C:\Users\Administrator.CONTOSO> route print
-----
Interface List
13...00 0c 29 b0 05 80 .....Intel(R) PRO/1000 MT Network Connection
1.....Software Loopback Interface 1
12...00 00 00 00 00 00 e0 Microsoft Teredo Tunneling Adapter
15...00 00 00 00 00 00 e0 Microsoft ISATAP Adapter #2
-----

IPv4 Route Table
-----
Active Routes:
Network Destination        Netmask          Gateway          Interface        Metric
0.0.0.0                    0.0.0.0          10.10.1.0        10.10.1.10       442
10.10.1.0                  255.255.255.0   On-link          10.10.1.10       266
10.10.1.10                 255.255.255.255 On-link          10.10.1.10       266
10.10.1.255                255.255.255.255 On-link          10.10.1.10       266
127.0.0.0                  255.0.0.0       On-link          127.0.0.1        306
127.0.0.1                  255.255.255.255 On-link          127.0.0.1        306
127.255.255.255           255.255.255.255 On-link          127.0.0.1        306
192.168.2.0                255.255.255.0   On-link          10.10.1.10       266
192.168.2.10              255.255.255.255 On-link          10.10.1.10       266
192.168.2.255             255.255.255.255 On-link          10.10.1.10       266
224.0.0.0                  240.0.0.0       On-link          127.0.0.1        306
224.0.0.0                  240.0.0.0       On-link          10.10.1.10       266
255.255.255.255           255.255.255.255 On-link          127.0.0.1        306
255.255.255.255           255.255.255.255 On-link          10.10.1.10       266
-----

Persistent Routes:
Network Address    Netmask    Gateway Address    Metric
0.0.0.0            0.0.0.0    10.10.1.0          432
-----

IPv6 Route Table
-----
Active Routes:
If Metric Network Destination      Gateway
1 306 ::1/128 On-link
1 306 ff00::/8 On-link
-----

Persistent Routes:
None
PS C:\Users\Administrator.CONTOSO>
```

You need to ensure that Server1 can communicate with the client computers on LAN2. What should you do?



- A. Change the default gateway address.
- B. Set the state of the Microsoft ISATAP Adapter #2 interface to disable.
- C. Change the metric of the 10.10.1.0 route.
- D. Set the state of the Teredo interface to disable.

Correct Answer: A

The exhibit shows the default gateway address to be that of LAN1. This should be changed to the LAN2 gateway address to allow client computers access on LAN2.

In general, the first and last addresses in a subnet are used as the network identifier and broadcast address, respectively. All other addresses in the subnet can be assigned to hosts on that subnet. For example, IP addresses of networks with

subnet masks of at least 24 bits ending in .0 or .255 can never be assigned to hosts. Such "last" addresses of a subnet are considered "broadcast" addresses and all hosts on the corresponding subnet will respond to it. Theoretically, there

could be situations where you can assign an address ending in .0: for example, if you have a subnet like 192.168.0.0/255.255.0.0, you are allowed to assign a host the address 192.168.1.0. It could create confusion though, so it's not a very

common practice.

Example 10.6.43.0 with subnet 255.255.252.0 (22 bit subnet mask) means subnet ID 10.6.40.0, a host address range from 10.6.40.1 to 10.6.43.254 and a broadcast address 10.6.43.255. So in theory, your example 10.6.43.0 would be allowed

as a valid host address. The default gateway address should not end in .0 with the /24 address.

References:

Training Guide: Installing and Configuring Windows Server 2012 R2, Chapter 4: Deploying domain controllers, Lesson 4: Configuring IPv6/IPv4 Interoperability, p. 254-256

---

## QUESTION 5

Your network contains a production Active Directory forest named contoso.com and a test Active Directory forest named contoso.test. A trust relationship does not exist between the forests.

In the contoso.test domain, you create a backup of a Group Policy object (GPO) named GPO1.

You transfer the backup of GPO1 to a domain controller in the contoso.com domain.

You need to create a GPO in contoso.com based on the settings of GPO1. You must achieve this goal by using the minimum amount of Administrative effort.

What should you do?

- A. From Windows PowerShell, run the Get-GPO cmdlet and the Copy-GPO cmdlet.
- B. From Windows PowerShell, run the New-GPO cmdlet and the Import-GPO cmdlet.



C. From Group Policy Management, create a new starter GPO. Right-click the new starter GPO, and then click Restore from Backup.

D. From Group Policy Management, right-click the Group Policy Objects container, and then click Manage Backups.

E. From Group Policy Management, create a new GPO. Right-click the Starter GPOs container, and then click Manage Backups.

Correct Answer: B

The Import-GPO cmdlet imports the settings from a GPO backup into a specified target GPO. The target GPO can be in a different domain or forest than that from which the backup was made and it does not have to exist prior to the operation.

Incorrect Answers:

A: Copy-GPO requires domain trust / copy from one domain to another domain within the same forest.

C: This would create a starter GPO, not a GPO.

D: You can also restore GPOs. This operation takes a backed-up GPO and restores it to the same domain from which the GPO's original which it was backed up. You cannot restore a GPO from backup into a domain different from the original domain. The New-GPO cmdlet creates a new GPO with a specified name. By default, the newly created GPO is not linked to a site, domain, or organizational unit (OU). The Import-GPO cmdlet imports the settings from a GPO backup into a specified target GPO. The target GPO can be in a different domain or forest than that from which the backup was made and it does not have to exist prior to the operation. The Restore-GPO cmdlet restores a GPO backup to the original domain from which it was saved. If the original domain is not available, or if the GPO no longer exists in the domain, the cmdlet fails.

Since the GPO's original domain is different and there is no trust relationship between forests, you should execute the New-GPO command and import the already existing command into the `new` domain.

[70-410 Practice Test](#)

[70-410 Study Guide](#)

[70-410 Exam Questions](#)



To Read the [Whole Q&As](#), please purchase the [Complete Version](#) from [Our website](#).

## Try our product !

100% Guaranteed Success

100% Money Back Guarantee

365 Days Free Update

Instant Download After Purchase

24x7 Customer Support

Average 99.9% Success Rate

More than 800,000 Satisfied Customers Worldwide

Multi-Platform capabilities - [Windows](#), [Mac](#), [Android](#), [iPhone](#), [iPod](#), [iPad](#), [Kindle](#)

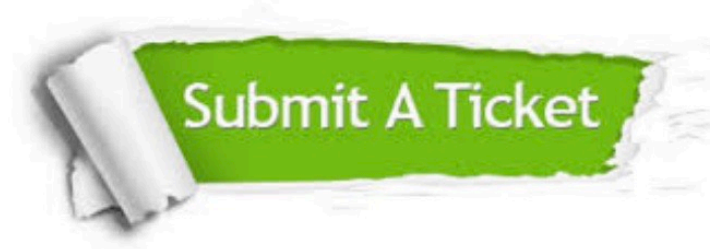
We provide exam PDF and VCE of Cisco, Microsoft, IBM, CompTIA, Oracle and other IT Certifications. You can view Vendor list of All Certification Exams offered:

<https://www.lead4pass.com/allproducts>

## Need Help

Please provide as much detail as possible so we can best assist you.

To update a previously submitted ticket:



 <p><b>One Year Free Update</b> Free update is available within One Year after your purchase. After One Year, you will get 50% discounts for updating. And we are proud to boast a 24/7 efficient Customer Support system via Email.</p>	 <p><b>Money Back Guarantee</b> To ensure that you are spending on quality products, we provide 100% money back guarantee for 30 days from the date of purchase.</p>	 <p><b>Security &amp; Privacy</b> We respect customer privacy. We use McAfee's security service to provide you with utmost security for your personal information &amp; peace of mind.</p>
---	---	--

Any charges made through this site will appear as Global Simulators Limited.

All trademarks are the property of their respective owners.

Copyright © lead4pass, All Rights Reserved.