



70-410^{Q&As}

Installing and Configuring Windows Server 2012

Pass Microsoft 70-410 Exam with 100% Guarantee

Free Download Real Questions & Answers **PDF** and **VCE** file from:

<https://www.lead4pass.com/70-410.html>

100% Passing Guarantee
100% Money Back Assurance

Following Questions and Answers are all new published by Microsoft
Official Exam Center

-  **Instant Download** After Purchase
-  **100% Money Back** Guarantee
-  **365 Days** Free Update
-  **800,000+** Satisfied Customers





QUESTION 1

Your network contains one Active Directory forest named contoso.com. The forest contains a single domain. All domain controllers run Windows Server 2012 R2.

All client computers run either Windows 7 or Windows 8.1. Some of the Windows 8.1 computers are not joined to the domain.

Your company's security policy has the following requirements for accessing corporate files:

All of the offline files on the client computers must be encrypted.

All users must be locked out of their client computer automatically after two minutes of inactivity.

A colleague recommends deploying work folders to all of the client computers.

You need to identify which requirements can be met by using work folders.

Which requirements should you identify? To answer, select the appropriate options in the answer area.

Hot Area:

Answer Area

All offline files must be encrypted:

<input type="checkbox"/>	Cannot be achieved by using work folders.
<input type="checkbox"/>	Can be achieved only for the Windows 7 computers by using work folders.
<input type="checkbox"/>	Can be achieved only for the Windows 8.1 computers by using work folders.
<input type="checkbox"/>	Can be achieved for the Windows 7 and Windows 8.1 computers by using work folders.

All users must be locked out of their computer automatically after two minutes of inactivity:

<input type="checkbox"/>	Cannot be achieved by using work folders.
<input type="checkbox"/>	Can be achieved only for the Windows 7 computers by using work folders.
<input type="checkbox"/>	Can be achieved only for the Windows 8.1 computers by using work folders.
<input type="checkbox"/>	Can be achieved for the Windows 7 and Windows 8.1 computers by using work folders.

Correct Answer:

Answer Area

All offline files must be encrypted:

<input type="checkbox"/>	Cannot be achieved by using work folders.
<input type="checkbox"/>	Can be achieved only for the Windows 7 computers by using work folders.
<input type="checkbox"/>	Can be achieved only for the Windows 8.1 computers by using work folders.
<input checked="" type="checkbox"/>	Can be achieved for the Windows 7 and Windows 8.1 computers by using work folders.

All users must be locked out of their computer automatically after two minutes of inactivity:

<input type="checkbox"/>	Cannot be achieved by using work folders.
<input type="checkbox"/>	Can be achieved only for the Windows 7 computers by using work folders.
<input checked="" type="checkbox"/>	Can be achieved only for the Windows 8.1 computers by using work folders.
<input type="checkbox"/>	Can be achieved for the Windows 7 and Windows 8.1 computers by using work folders.



<https://4sysops.com/archives/work-folders-for-windows-7-limitations/> <http://blogs.technet.com/b/canitpro/archive/2013/11/13/step-by-step-creating-a-work-folders-test-lab-deployment-in-windows-server-2012-r2.aspx>

QUESTION 2

Your network contains an Active Directory domain named contoso.com. The domain contains two servers named Server1 and Server2. Server1 runs Windows Server 2012 R2. Server2 runs Windows Server 2008 R2 Service Pack 1 (SP1)

and has the DHCP Server server role installed.

You need to manage DHCP on Server2 by using the DHCP console on Server1.

What should you do first?

- A. From Windows PowerShell on Server2, run Enable-PSRemoting cmdlet.
- B. From Windows PowerShell on Server1, run Install-Windows Feature.
- C. From Windows Firewall with Advanced Security on Server2, create an inbound rule.
- D. From Internet Explorer on Server2, download and install Windows Management Framework 3.0.
- E. From the Microsoft management Console on Server1, add a snap-in.

Correct Answer: B

When the DHCP role is installed, it appears that the firewall rules are automatically added, so C is not valid (not only that, but either way it is an existing rule that one would need only enable nonetheless, not create a new rule). This means

you only need to add the DHCP Manager MMC snap-in which is a Role Administration Tool feature.

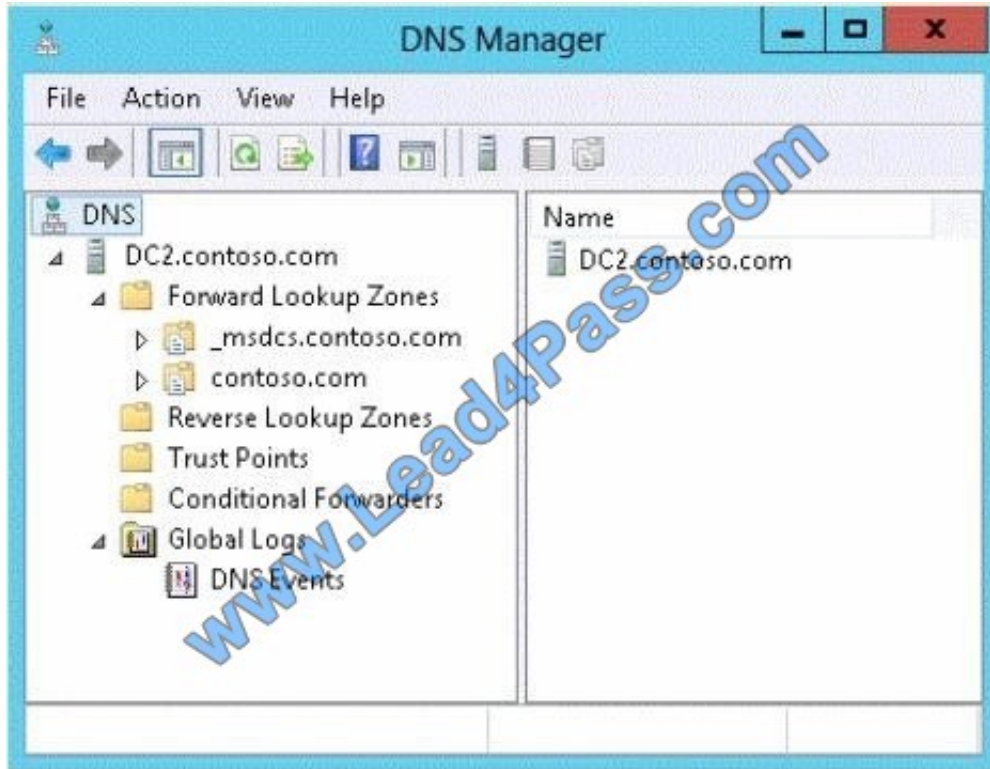
So the correct answer must be B.

References:

Training Guide: Installing and Configuring Windows Server 2012 R2, Chapter 6 Network Administration, p.228

QUESTION 3

You have a server named dc2.contoso.com that runs Windows Server 2012 R2 and has the DNS Server server role installed. You open DNS Manager as shown in the exhibit. (Click the Exhibit button.)



You need to view the DNS server cache from DNS Manager. What should you do first?

- A. From the View menu, click Filter...
- B. From the Action menu, click Configure a DNS Server...
- C. From the Action menu, click Properties.
- D. From the View menu, click Advanced.

Correct Answer: D

To view the contents of the DNS cache, perform the following steps:

1.
Start the Microsoft Management Console (MMC) DNS snap-in (Go to Start, Programs, Administrative Tools, and click DNS).
2.
From the View menu, select Advanced.
3.
Select the Cached Lookups tree node from the left-hand pane to display the top-level domains (e.g., com, net) under.(root). Expand any of these domains to view the cached DNS information (the actual records will appear in the right-hand pane).

Navigating the DNS Manager console you should go to the View menu and click the Advanced tab. That will yield the DNS server cache. Reference: <http://technet.microsoft.com/en-us/library/ee683892%28v=WS.10%29.aspx>



QUESTION 4

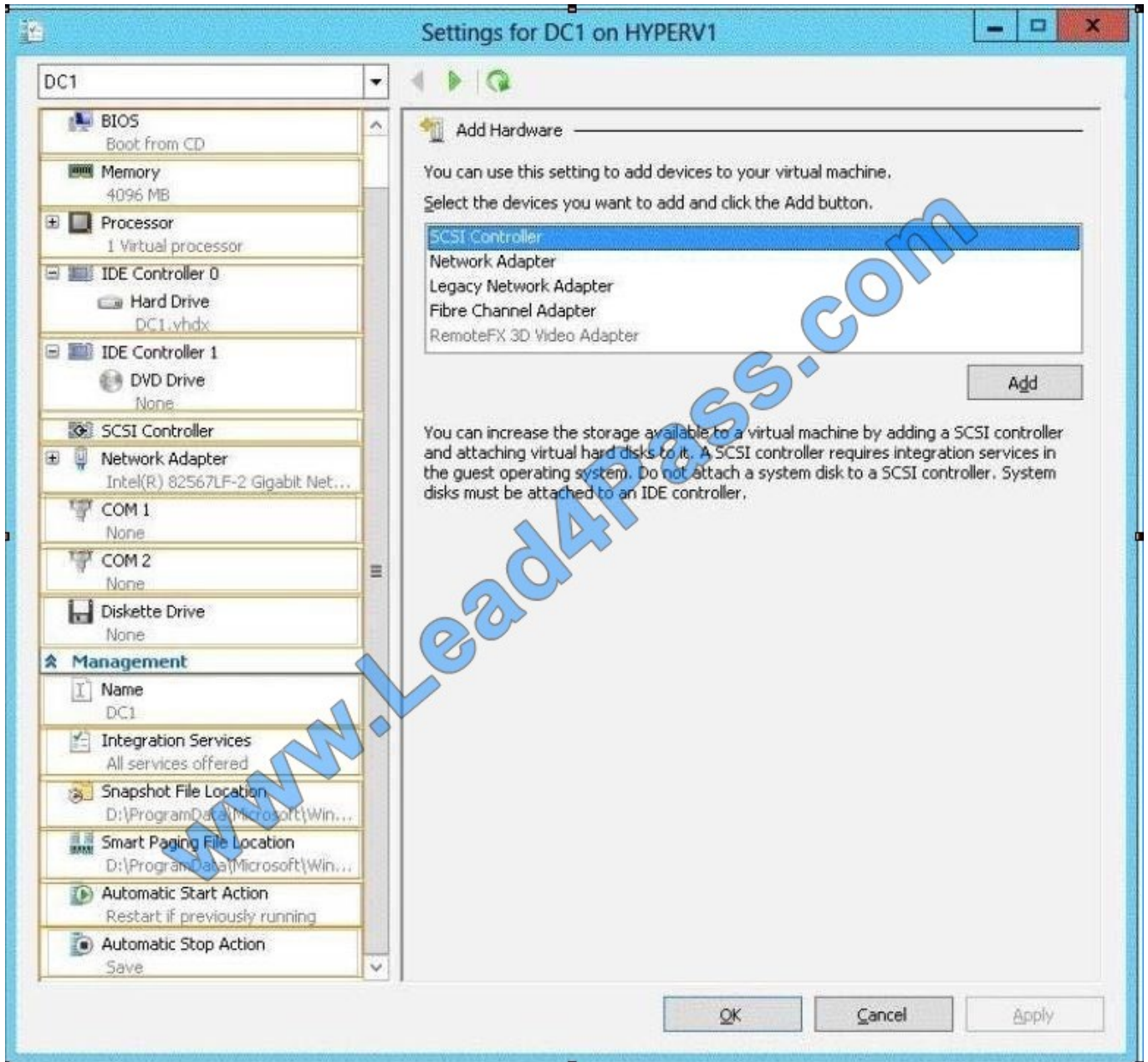
Your network contains an Active Directory domain named contoso.com. The domain contains a member server named Hyperv1 and a domain controller named DC1. Hyperv1 has the Hyper-V server role installed. DC1 is a virtual machine on

Hyperv1. Users report that the time on their client computer is incorrect. You log on to DC1 and verify that the time services are configured correctly. You need to prevent time conflicts between the time provided by DC1 and other potential

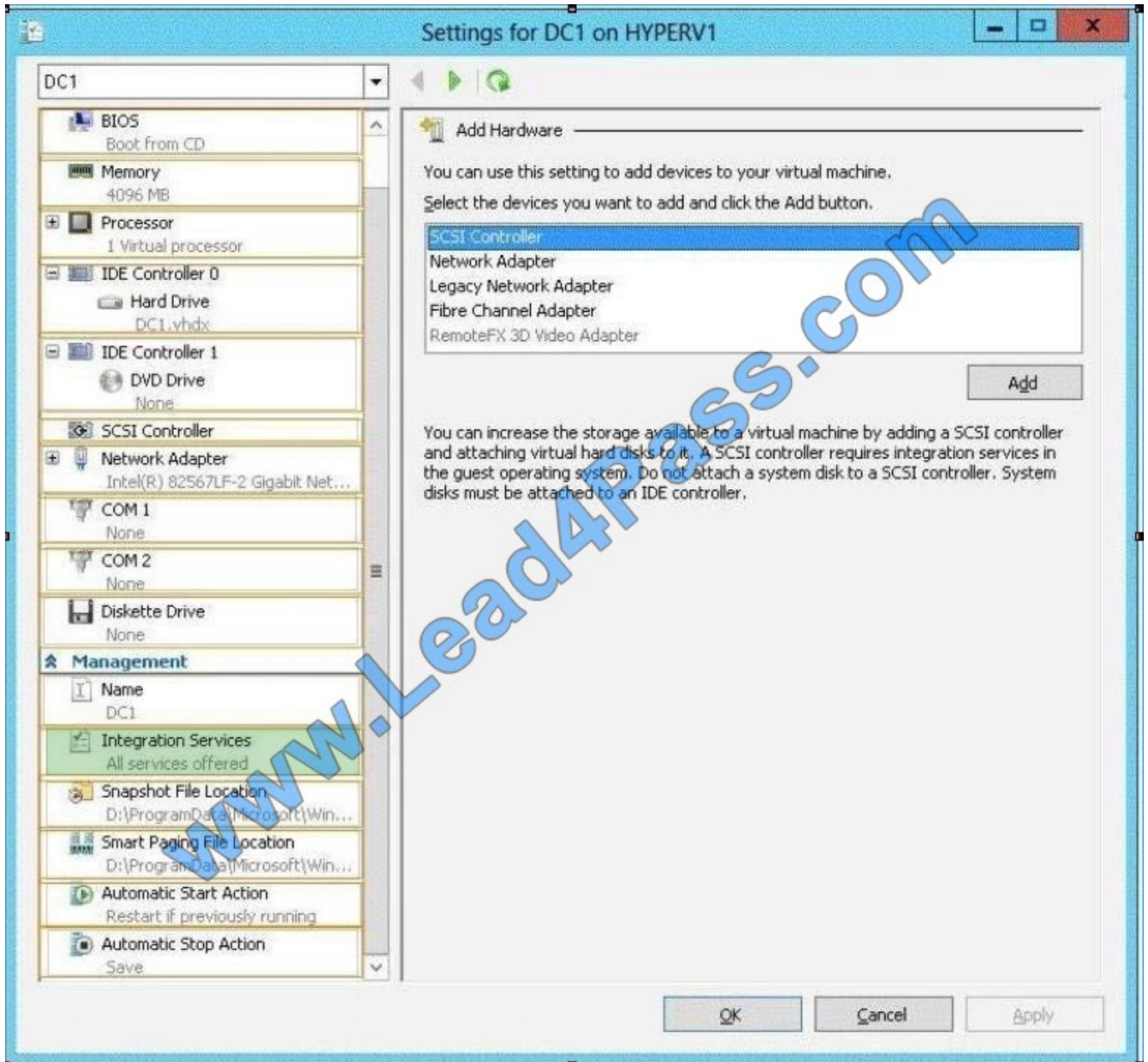
time sources.

What should you configure? To answer, select the appropriate object in the answer area.

Hot Area:



Correct Answer:



Hyper-V integration services are updated with a new service that allows Hyper-V administrators to copy files to the virtual machine while the virtual machine is running without using a network connection.

In previous versions of Hyper-V, a Hyper-V administrator may have needed to shut down a virtual machine to copy files to it. A new Hyper-V integration service has been added that allows the Hyper-V administrator to copy files to a running virtual machine without using a network connection. This will eliminate time conflicts.

Reference: <http://technet.microsoft.com/en-us/library/dn282278.aspx>

QUESTION 5

Your network contains an Active Directory domain named contoso.com. The domain contains a server named Server1 that runs Windows Server 2012 R2 and has the Web Server (IIS) server role installed.



Server1 has a web site named Web1. Web1 is configured to use digest authentication.

You need to ensure that a user named User1 can access Web1.

What should you do from Active Directory Users and Computers?

- A. From the properties of User1, select Store password using reversible encryption.
- B. From the properties of User1, select Use Kerberos DES encryption types for this account.
- C. From the properties of Server1, select Trust this computer for delegation to any service (Kerberos only).
- D. From the properties of Server1, assign the Allowed to Authenticate permission to User1.

Correct Answer: A

Challenge Handshake Authentication Protocol (CHAP) is a basic level of iSCSI security that is used to authenticate the peer of a connection and is based upon the peers sharing a secret: that secret being a password. To make sure that User1 can connect to the server, you should use Active Directory Users and Computers to store that password.

[70-410 PDF Dumps](#)

[70-410 Practice Test](#)

[70-410 Study Guide](#)



To Read the [Whole Q&As](#), please purchase the [Complete Version](#) from [Our website](#).

Try our product !

100% Guaranteed Success

100% Money Back Guarantee

365 Days Free Update

Instant Download After Purchase

24x7 Customer Support

Average 99.9% Success Rate

More than 800,000 Satisfied Customers Worldwide

Multi-Platform capabilities - [Windows](#), [Mac](#), [Android](#), [iPhone](#), [iPod](#), [iPad](#), [Kindle](#)

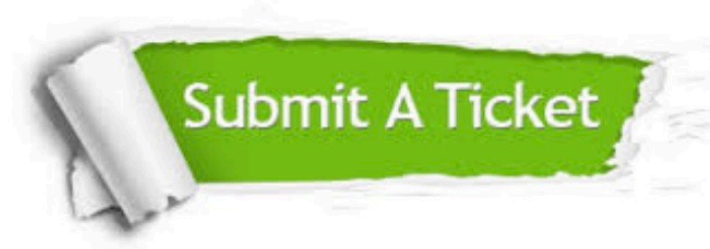
We provide exam PDF and VCE of Cisco, Microsoft, IBM, CompTIA, Oracle and other IT Certifications. You can view Vendor list of All Certification Exams offered:

<https://www.lead4pass.com/allproducts>

Need Help

Please provide as much detail as possible so we can best assist you.

To update a previously submitted ticket:



 <p>One Year Free Update Free update is available within One Year after your purchase. After One Year, you will get 50% discounts for updating. And we are proud to boast a 24/7 efficient Customer Support system via Email.</p>	 <p>Money Back Guarantee To ensure that you are spending on quality products, we provide 100% money back guarantee for 30 days from the date of purchase.</p>	 <p>Security & Privacy We respect customer privacy. We use McAfee's security service to provide you with utmost security for your personal information & peace of mind.</p>
---	---	--

Any charges made through this site will appear as Global Simulators Limited.

All trademarks are the property of their respective owners.

Copyright © lead4pass, All Rights Reserved.