



70-341^{Q&As}

Core Solutions of Microsoft Exchange Server

Pass Microsoft 70-341 Exam with 100% Guarantee

Free Download Real Questions & Answers **PDF** and **VCE** file from:

<https://www.lead4pass.com/70-341.html>

100% Passing Guarantee
100% Money Back Assurance

Following Questions and Answers are all new published by Microsoft
Official Exam Center

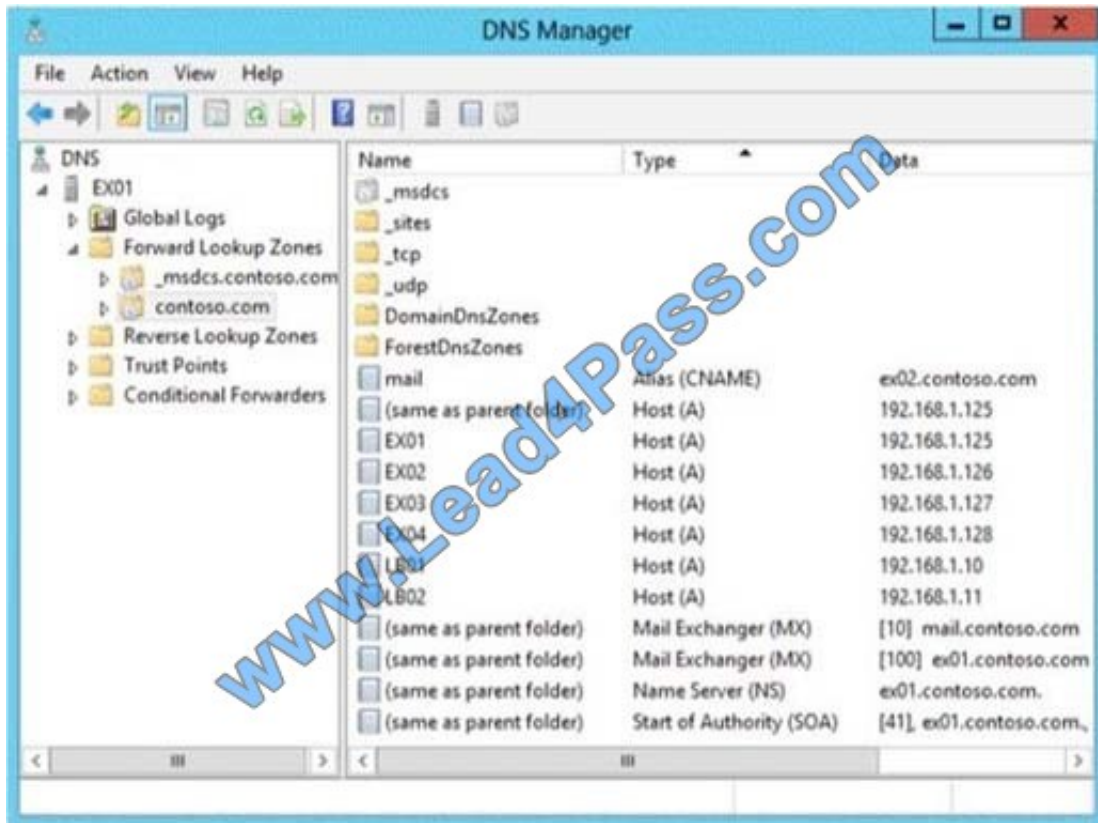
-  **Instant Download** After Purchase
-  **100% Money Back** Guarantee
-  **365 Days** Free Update
-  **800,000+** Satisfied Customers





QUESTION 1

Your company has an Exchange Server 2013 organization. All servers have the Client Access server role and the Mailbox server role installed. The DNS Manager is shown in the exhibit.



Use the drop-down menus to select the answer choice that completes each statement.

Hot Area:

Answer Area

The server named [answer choice] receives all incoming email from the Internet.

Drop-down menu with options: EX01, EX02, EX03, EX04, LB01, LB02.

To load balance the inbound SMTP communication between two Exchange servers, [answer choice]

Drop-down menu with options: set the priority value of ex01.contoso.com to 10, create a service location (SRV) record for EX02 that has a weight of 100, create a mail exchanger (MX) record for LB01 that has a priority value of 10, create a mail exchanger (MX) record for LB01 that has a priority value of 100.

Correct Answer:



Answer Area

The server named [answer choice] receives all incoming email from the Internet.

EX01
EX02
EX03
EX04
LB01
LB02

To load balance the inbound SMTP communication between two Exchange servers, [answer choice]

set the priority value of ex01.contoso.com to 10.
create a service location (SRV) record for EX02 that has a weight of 100.
create a mail exchanger (MX) record for LB01 that has a priority value of 10.
create a mail exchanger (MX) record for LB01 that has a priority value of 100.

QUESTION 2

You have an Exchange Server 2013 organization.

The help desk reports that users fail to access their mailbox by using the URL <http://mail.contoso.com>. All of the users successfully connect to their mailbox by using Exchange ActiveSync.

You need to ensure that all of the users can access their mailbox by using the URL <http://maif.contoso.com>.

What should you configure on a Client Access server?

- A. From Internet Information Services (IIS) Manager, configure HTTP Response Headers on the OWA virtual directory.
- B. From Exchange Admin Center, create a new Outlook Web App mailbox policy.
- C. From File Explorer, modify the permissions of the Web.config file in the Default Web Site folder.
- D. From Internet Information Services (IIS) Manager, configure HTTP Redirect on the default web site.

Correct Answer: D

QUESTION 3

Your company has two main offices named Main1 and Main2. Each office has a data center.

You have an Exchange Server 2013 organization. Each data center contains several Exchange servers and connects directly to the Internet. Each office has a Send connector to the Internet.

You configure each office as a separate site and you configure Main1 as a hub site.

The company opens a branch office that contains a small data center.

You deploy an Exchange Server 2013 server to the data center. The data center has a direct network link to Main1



Hot Area:

Scenario	Through Main1	Through Main2
A user in the branch office sends an email message to a recipient in Main1.	<input type="checkbox"/>	<input type="checkbox"/>
A user in the branch office sends an email message to the Internet	<input type="checkbox"/>	<input type="checkbox"/>
A user in the branch office sends an email message to a recipient in Main2	<input type="checkbox"/>	<input type="checkbox"/>

Correct Answer:

Scenario	Through Main1	Through Main2
A user in the branch office sends an email message to a recipient in Main1.	<input checked="" type="checkbox"/>	<input type="checkbox"/>
A user in the branch office sends an email message to the Internet	<input checked="" type="checkbox"/>	<input type="checkbox"/>
A user in the branch office sends an email message to a recipient in Main2	<input checked="" type="checkbox"/>	<input type="checkbox"/>

QUESTION 4

You are migrating an existing Exchange Server 2007 organization to Exchange Server 2013. You expect the migration to last several weeks. The servers in the organization are configured as shown in the following table.

Server name	Active Directory site name	Server role	Exchange Server version
EX1	Main	Mailbox server Client Access server Hub Transport server	Exchange Server 2007
EX2	Main	Mailbox server	Exchange Server 2013
EX3	Main	Mailbox server	Exchange Server 2013
EX4	Main	Client Access server	Exchange Server 2013
EX5	Main	Client Access server	Exchange Server 2013

Users who have mailboxes on all of the servers will access Outlook Anywhere by using the mail.contoso.com name.



You need to recommend which servers must be associated to the autodiscover.contoso.com and mail.contoso.com names.

Which servers should you identify for each name?

To answer, drag the appropriate servers to the correct name in the answer area. Each server may be used once, more than once, or not at all. Additionally, you may need to drag the split bar between panes or scroll to view content.

Select and Place:

Servers	Answer Area
EX1	mail.contoso.com Server Server
EX2	autodiscover.contoso.com Server Server
EX3	
EX4	
EX5	

Correct Answer:

Servers	Answer Area
EX1	mail.contoso.com EX5 EX4
EX2	autodiscover.contoso.com EX5 EX4
EX3	
EX4	
EX5	

QUESTION 5

You have an Exchange Server 2013 organization that contains two servers. The servers are configured as shown in the following table.



Server name	Server role
Ex1	Mailbox server Client Access server
Ex2	Mailbox server Client Access server

You need to create a new database availability group (DAG) that contains EX1 and EX2.

Which three actions should you perform?

To answer, move the three appropriate actions from the list of actions to the answer area and arrange them in the correct order.

Select and Place:

Actions	Answer Area
Add the Exchange Trusted Subsystem universal security group to the local Administrators group on Server1.	
Create a new DAG and specify Server1 as the file share witness.	
Install Exchange Server 2013 on Server1.	
Add the Exchange Trusted Subsystem universal security group to the local Administrators group on EX1 and EX2.	
Create a new DAG and let Exchange Server select the file share witness automatically.	
Add EX1 and EX2 to the DAG.	

Correct Answer:



Actions	Answer Area
	Add the Exchange Trusted Subsystem universal security group to the local Administrators group on Server1.
	Create a new DAG and specify Server1 as the file share witness.
Install Exchange Server 2013 on Server1.	Add EX1 and EX2 to the DAG.
Add the Exchange Trusted Subsystem universal security group to the local Administrators group on EX1 and EX2.	
Create a new DAG and let Exchange Server select the file share witness automatically.	

[Latest 70-341 Dumps](#)

[70-341 Practice Test](#)

[70-341 Exam Questions](#)



To Read the [Whole Q&As](#), please purchase the [Complete Version](#) from [Our website](#).

Try our product !

100% Guaranteed Success

100% Money Back Guarantee

365 Days Free Update

Instant Download After Purchase

24x7 Customer Support

Average 99.9% Success Rate

More than 800,000 Satisfied Customers Worldwide

Multi-Platform capabilities - [Windows](#), [Mac](#), [Android](#), [iPhone](#), [iPod](#), [iPad](#), [Kindle](#)

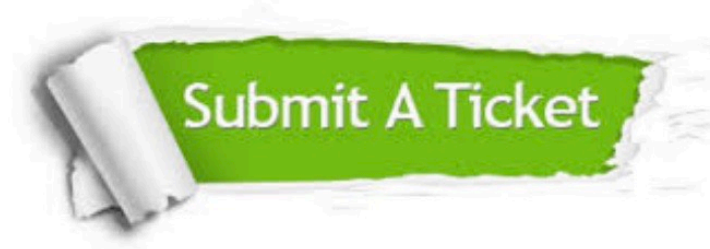
We provide exam PDF and VCE of Cisco, Microsoft, IBM, CompTIA, Oracle and other IT Certifications. You can view Vendor list of All Certification Exams offered:

<https://www.lead4pass.com/allproducts>

Need Help

Please provide as much detail as possible so we can best assist you.

To update a previously submitted ticket:



 <p>One Year Free Update Free update is available within One Year after your purchase. After One Year, you will get 50% discounts for updating. And we are proud to boast a 24/7 efficient Customer Support system via Email.</p>	 <p>Money Back Guarantee To ensure that you are spending on quality products, we provide 100% money back guarantee for 30 days from the date of purchase.</p>	 <p>Security & Privacy We respect customer privacy. We use McAfee's security service to provide you with utmost security for your personal information & peace of mind.</p>
---	---	--

Any charges made through this site will appear as Global Simulators Limited.

All trademarks are the property of their respective owners.

Copyright © lead4pass, All Rights Reserved.