



70-246^{Q&As}

Private Cloud Monitoring and Operations with System Center

Pass Microsoft 70-246 Exam with 100% Guarantee

Free Download Real Questions & Answers **PDF** and **VCE** file from:

<https://www.lead4pass.com/70-246.html>

100% Passing Guarantee
100% Money Back Assurance

Following Questions and Answers are all new published by Microsoft
Official Exam Center

-  **Instant Download** After Purchase
-  **100% Money Back** Guarantee
-  **365 Days** Free Update
-  **800,000+** Satisfied Customers





QUESTION 1

Your company has a datacenter in Los Angeles.

The datacenter contains a private cloud that is managed by using a System Center 2012 infrastructure.

The infrastructure has the System Center 2012 Service Manager Self-Service Portal installed. You create a new service offering.

You need to ensure that only three users named Admin1, Admin2, and Admin3 can access the service offering.

What should you do?

- A. Add the service offering and the request offering to a Service Manager group, and then create a Run As Account.
- B. Add the Admin1, Admin2, and Admin3 configuration items to a Service Manager group, and then create a Run As Account.
- C. Add the service offering and the request offering to a Service Manager group, and then create a User Role.
- D. Add the Admin1, Admin2, and Admin3 configuration items to a Service Manager group, and then create a User Role.

Correct Answer: D

With Role based security scoping in SCSM there is the possibility to configure a controlled environment for different service roles. A SCSM role profile is a configuration set to define access to objects, views in the console, operations they can

perform and members of the role (AD User/ Group).

SCSM components of a User role are:

The security scope: Is the security boundary in SCSM. Boundaries can be set on Group/queue, Class, Property and relationships. UI filter scope: This filter is for defining what an operator can see in the SCSM console. Limiting the options

visible in the console improves the usability. UI filters can be set on console tasks, templates and views. User role profile: SCSM includes some predefined user profiles who include a set of allowed operations with a class/property/relationship

scope over objects. User Assignment: The members of the user role in SCSM.

This can be set for users or groups.

(Always recommended to use groups)

<http://scug.be/scsm/2010/03/21/service-manager-role-based-security-scoping>

QUESTION 2

Your company has a private cloud that is managed by using a System Center 2012 Operations Manager infrastructure. The infrastructure contains a management server named Server 1.



The network contains two subnets named Subnet1 and Subnet2. The two subnets are separated by a firewall that prevents SNMP communications.

Server1 is located on Subnet1.

A switch named Switch1 is located on Subnet2.

Switch1 has the following configurations:

Network ID: 172.23.1.0/23

IPv4 address: 172.23.1.55

IPv6 address: fec0:2308::12

You need to discover Switch1.

What should you configure from the Computer and Device Management Wizard?

To answer, drag the appropriate values to the correct locations in the answer area. (Each value may be used once, more than once, or not at all.)

Select and Place:

Values

- ICMP
- SNMP
- ICMP and SNMP
- 172.23.1.55
- 172.23.1.0/23
- Fec0:2308::12

Answer Area

Add a Device

Specify the settings for the network device you want to discover.

Name or IP address:

Access mode:

Port number:

SNMP version:

SNMP V1 or V2 Run As account:

[More about device settings](#)

OK Cancel

Correct Answer:



Values

Answer Area

Add a Device

Specify the settings for the network device you want to discover.

Name or IP address: 172.23.1.55

Access mode: ICMP

SNMP version: v1 or v2

SNMP V1 or V2 Run As account: Use selected default accounts

Port number: 161

More about device settings

OK Cancel

QUESTION 3

Your company has a private cloud that is managed by using a System Center 2012 infrastructure.

The network contains an Orchestrator infrastructure and a Service Manager infrastructure.

You need to automate user account provisioning for the Self-Service Portal.

The solution must ensure that new user accounts are approved by a member of the human resources department.

You configure the Orchestrator connector.

Which five actions should you perform next?

(To answer, move the appropriate actions from the list of actions to the answer area.)

Select and Place:



Actions	Answer Area
Create a service offering.	
Create a service request template.	
Configure the Active Directory connector.	
From System Center 2012 Configuration Manager, configure the connector.	
Assign a runbook activity.	
Create a request offering.	
Create an incident request template.	
Create a compliance program activity.	
Create a review activity.	

Correct Answer:

Actions	Answer Area
Create a service offering.	Configure the Active Directory connector.
	Assign a runbook activity.
	Create a review activity.
From System Center 2012 Configuration Manager, configure the connector.	Create a service request template.
	Create an incident request template.
	Create a request offering.
Create a compliance program activity.	

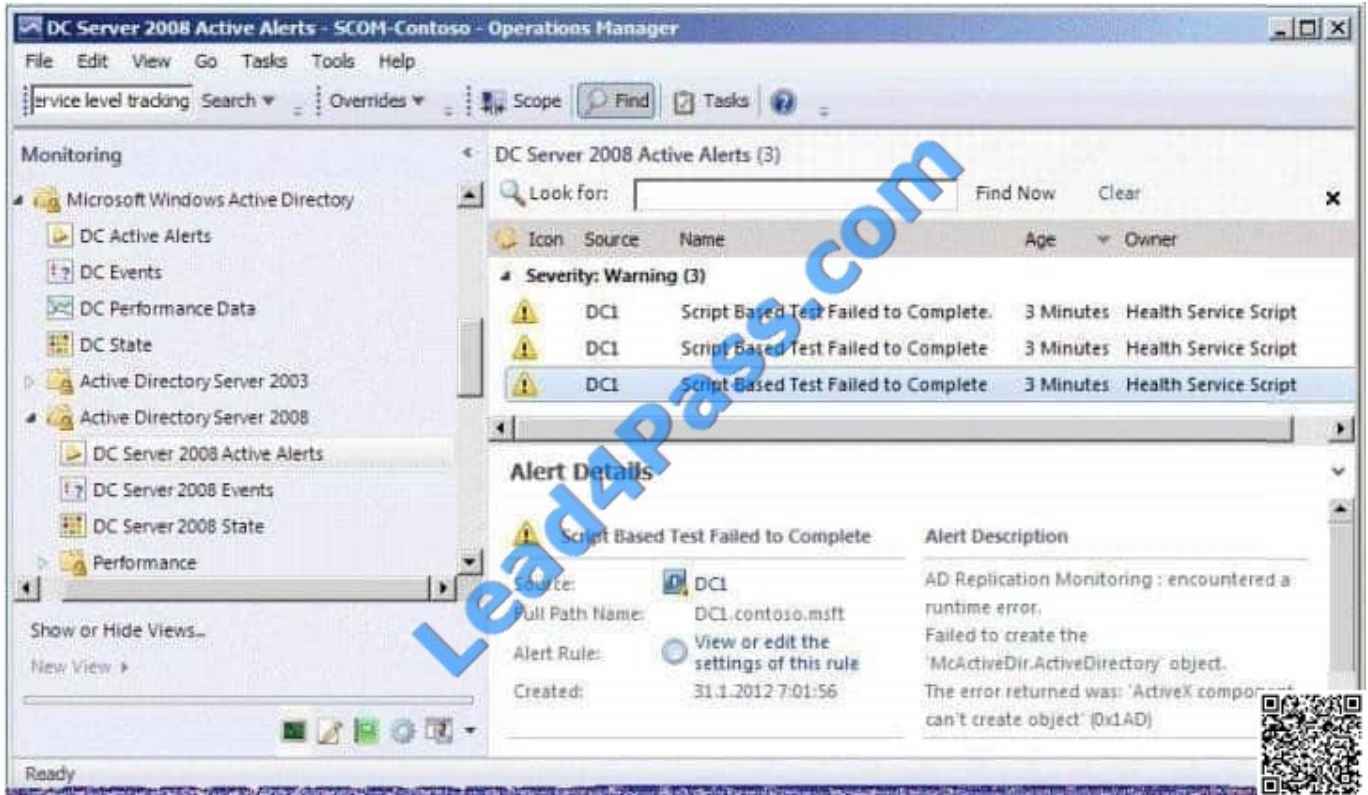
QUESTION 4

Your network contains an Active Directory domain named contoso.com. The domain contains a domain controller named DC1 and a server named Server1.

You install the management server role on Server1.

You install the Operations Manager agent on DC1.

You run the Operations Manager console and discover the active alerts shown in the exhibit. (Click the Exhibit button.)



You need to resolve the active alerts. What should you do?

- A. On DC1, install MOMADAdmin.exe.
- B. On Server1, install OomADs.msi.
- C. On Server1, install MOMADAdmin.exe.
- D. On DC1, install OomADs.msi.

Correct Answer: D

<http://technet.microsoft.com/en-us/library/hh230736.aspx>

You can use MOMAgent.msi to deploy System Center 2012 Operations Manager agents from the command line. Deploying agents from the command line is also referred to as a manual install. When installing the AD Management pack, please remember to open up the properties for the Agent which the DC is installed and check "Allow this agent to act as a proxy and discover managed objects on other computers." ALSO, please install the "OOMADs.msi" locally on the DC. What is this? This is the Active Directory Management Helper Object. It's not well mentioned in documentation I have read up on.

Apparently the "AD Database and Log: The script `AD Database and Log\ failed to create object `McActiveDir.ActiveDirectory\`. The error returned was: `ActiveX component can't create object\ (0x1AD)" error is a result of not having this component installed "The file which is installed automatically on a push install via a Management Server can be copied and manually installed from the OpsMgr software ... there is a HelpObjects folder where oomADS.msi can be run from."

QUESTION 5



You need to implement a solution to meet the monitoring requirements for App1. Which template should you use?

- A. TCP Port
- B. Web Application Transaction Monitoring
- C. Windows Service
- D. Process Monitoring

Correct Answer: B

[70-246 VCE Dumps](#)

[70-246 Study Guide](#)

[70-246 Braindumps](#)



To Read the [Whole Q&As](#), please purchase the [Complete Version](#) from [Our website](#).

Try our product !

100% Guaranteed Success

100% Money Back Guarantee

365 Days Free Update

Instant Download After Purchase

24x7 Customer Support

Average 99.9% Success Rate

More than 800,000 Satisfied Customers Worldwide

Multi-Platform capabilities - [Windows](#), [Mac](#), [Android](#), [iPhone](#), [iPod](#), [iPad](#), [Kindle](#)

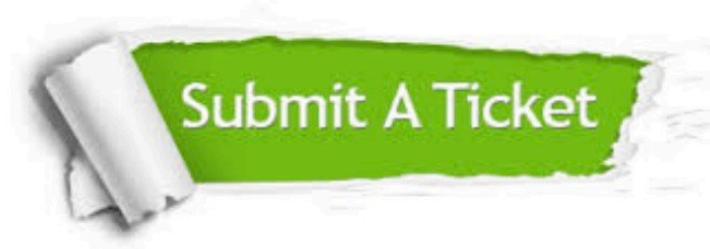
We provide exam PDF and VCE of Cisco, Microsoft, IBM, CompTIA, Oracle and other IT Certifications. You can view Vendor list of All Certification Exams offered:

<https://www.lead4pass.com/allproducts>

Need Help

Please provide as much detail as possible so we can best assist you.

To update a previously submitted ticket:



 <p>One Year Free Update Free update is available within One Year after your purchase. After One Year, you will get 50% discounts for updating. And we are proud to boast a 24/7 efficient Customer Support system via Email.</p>	 <p>Money Back Guarantee To ensure that you are spending on quality products, we provide 100% money back guarantee for 30 days from the date of purchase.</p>	 <p>Security & Privacy We respect customer privacy. We use McAfee's security service to provide you with utmost security for your personal information & peace of mind.</p>
---	---	--

Any charges made through this site will appear as Global Simulators Limited.

All trademarks are the property of their respective owners.

Copyright © lead4pass, All Rights Reserved.