

70-243^{Q&As}

Administering and Deploying System Center 2012 Configuration Manager

Pass home 70-243 Exam with 100% Guarantee

Free Download Real Questions & Answers **PDF** and **VCE** file from:

<https://www.leads4pass.com/70-243.html>

100% Passing Guarantee
100% Money Back Assurance

Following Questions and Answers are all new published by home
Official Exam Center

- ⚙️ **Instant Download** After Purchase
- ⚙️ **100% Money Back** Guarantee
- ⚙️ **365 Days** Free Update
- ⚙️ **800,000+** Satisfied Customers



QUESTION 1

DRAG DROP

You have a System Center 2012 R2 Configuration Manager Service Pack 1 (SP1) deployment that contains the servers configured as shown in the following table.

Server name	Configuration	Site
Server1	Central Administration site	C00
Server2	Primary site server	C01
Server3	Secondary site server Windows Server Update Services (WSUS)	C02
Server4	Windows Server Update Services (WSUS)	C01
Server5	Windows Server Update Services (WSUS)	C01

You need to ensure that Server3, Server4, and Server5 can be used to deploy software updates to Configuration Manager clients. The Configuration Manager clients in the primary site must be able to receive updates if one of the WSUS


servers becomes unavailable.

Which four actions should you perform in sequence? To answer, move the appropriate actions from the list of actions to the answer area and arrange them in the correct order.

Select and Place:

Actions		Answer Area
Install WSUS on Server1.		
Add a software update point on Server1.		
Add a software update point on Server2.		
Add a software update point on Server3.	➤	⬆
Add a software update point on Server4 and Server5.	⬅	⬇
Install Network Load Balancing (NLB) on Server3 and Server4.		

Correct Answer:

Actions	Answer Area
	Install WSUS on Server1.
	Add a software update point on Server1.
Add a software update point on Server2.	Add a software update point on Server4 and Server5.
	Add a software update point on Server3.
Install Network Load Balancing (NLB) on Server3 and Server4.	

Box 1: Install WSUS on Server1.

Box 2: Add a software update point on Server1.

Box 3: Add a software update point on Server4 and Server5.

Box 4: Add a software update point on Server3.

Note:

*

The software update point is required on the central administration site and on the primary sites to enable the software updates compliance assessment and to deploy software updates to clients. The software update point is optional on secondary sites.

*

When you have a Configuration Manager hierarchy, install and configure the software update point at the central administration site first, and then install and configure the software update pointson other sites.

QUESTION 2

HOTSPOT

Your network contains a System Center 2012 Configuration Manager environment.

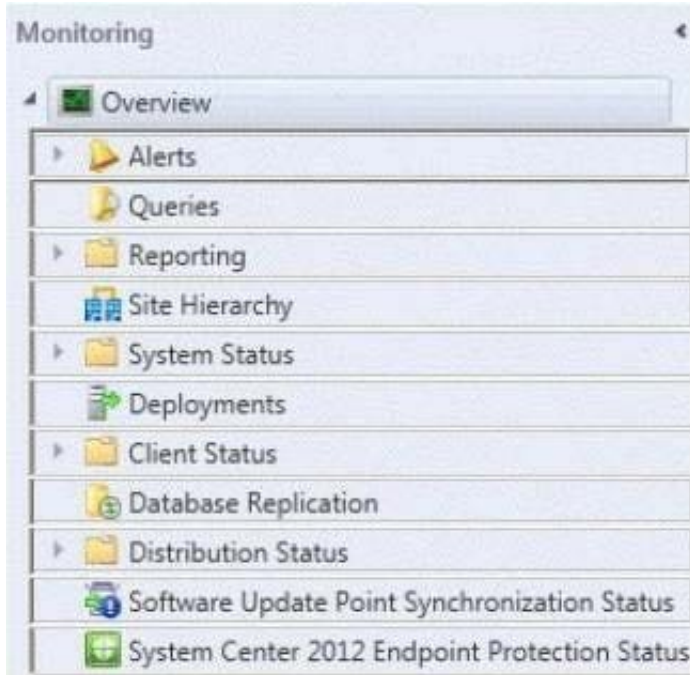
You deploy an application to 1,000 client computers.

You need to identify which client computers are in the process of installing the application.

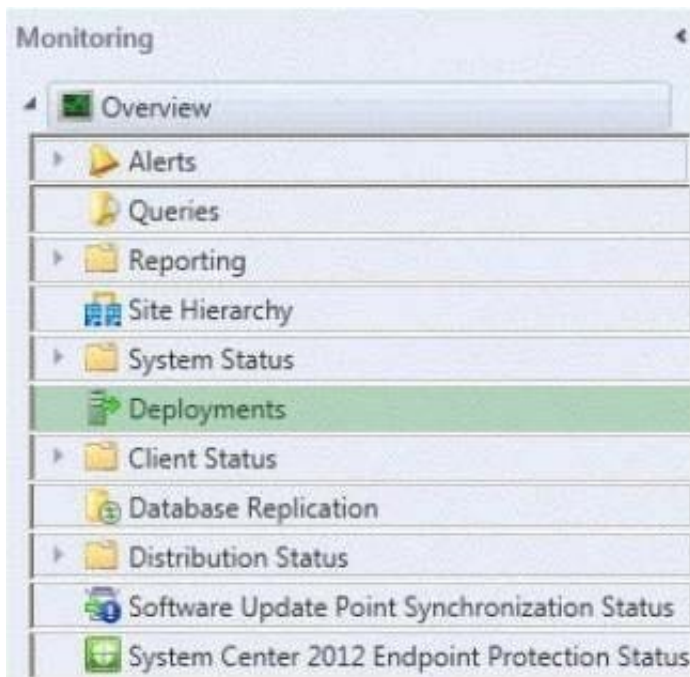
Which node should you select in the Configuration Manager console?

To answer, select the appropriate node in the answer area.

Hot Area:



Correct Answer:



To monitor the state of an application in the Configuration Manager console

1.

In the Configuration Manager console, click Monitoring.

2.

In the Monitoring workspace, click Deployments.

QUESTION 3**HOTSPOT**

You have a System Center 2012 R2 Configuration Manager Service Pack 1 (SP1) deployment.

From the Configuration Manager Console, you view the Deployment node from the Monitoring workspace as shown in the following table:

Software	Collection	Purpose	Action
App1	All Desktop and Server	Required	Install
App2	All Desktop and Server clients	Simulate	Install
App3	All Users	Available	Install
App4	All Desktop and Server clients	Required	Remediate

App2 has several requirements added to the deployment type. The Monitoring workspace displays the following completion statistics for App2.

- Success: 3
- In Progress: 0
- Error: 0
- Requirements Not Met: 5
- Unknown: 0

You need to identify the deployment status of App2.

What should you identify? To answer, select the appropriate options in the answer area.

Hot Area:

Answer Area

Number of client computers that have installed App2 as a result of this deployment:

	▼
0	
1	
2	
3	
4	
5	
6	
7	
8	

Number of client computers that meet the requirements for the application:

	▼
0	
1	
2	
3	
4	
5	
6	
7	
8	

Correct Answer:

Answer Area

Number of client computers that have installed App2 as a result of this deployment:

	▼
0	
1	
2	
3	
4	
5	
6	
7	
8	

Number of client computers that meet the requirements for the application:

	▼
0	
1	
2	
3	
4	
5	
6	
7	
8	

Use simulated deployments if you want to test the applicability of an application deployment to computers without installing or uninstalling the application. A simulated deployment evaluates the detection method, requirements and dependencies for a deployment type, and reports the results in the Deployments node of the Monitoring workspace. References: <https://technet.microsoft.com/en-us/library/hh508773.aspx>

QUESTION 4

HOTSPOT

You manage a System Center 2012 R2 Configuration Manager Service Pack 1 (SP1) stand-alone primary site. The deployment contains the servers configured as shown in the following table.

Server name	Configuration
Server1	Site server
Server2	Distribution point
Server3	SMS Provider
Server4	Reporting services point
Server5	Management point
Server6	Site database server

You are troubleshooting the hardware inventory flow from a Windows 8.1 computer named Client1. You need to verify whether the following events have occurred:

- The inventory files were uploaded from Client1.
- The inventory data was added to the site database.

Which log should you verify for each event? To answer, select the appropriate options in the answer area.

Hot Area:

Answer Area

The inventory files were uploaded from Client1:

▼

Datatransferservice.log on Client1

Invproc.log on Server1

Mp_hinv.log Server5

The application event log on Server3

The inventory data was added to the site database:

▼

Dataldr.log Server1

Datatransferservice.log on Client1

Invproc.log on Server1

Mp_hinv.log Server5

Correct Answer:

Answer Area

The inventory files were uploaded from Client1:

	▼
Datatransferservice.log on Client1	
Invproc.log on Server1	
Mp_hinv.log Server5	
The application event log on Server3	

The inventory data was added to the site database:

	▼
Datadr.log.Server1	
Datatransferservice.log on Client1	
Invproc.log on Server1	
Mp_hinv.log Server5	

*

Box 1:

MP_Hinv.log records details about the conversion of XML hardwareinventory records from clients and the copy of those files to the site server.

*

Box 2:

datadr.log records information about the processing of Management Information Format (MIF) files and hardware inventory in the Configuration Manager database.

Is placed on the site server.

QUESTION 5

HOTSPOT

You have a System Center 2012 R2 Configuration Manager Service Pack 1 (SP1) standalone primary site.

You have a Configuration Manager application named App1 and a Configuration Manager package named Package1.

You need to ensure that App1 and Package1 are deployed only to Windows 8 computers.

In the table below, identify what to configure for App1 and Package1.

NOTE: Make only one selection in each column.

Hot Area:

Answer Area

Configuration	App1	Package1
Deployment type requirements	<input type="radio"/>	<input type="radio"/>
Distribution settings	<input type="radio"/>	<input type="radio"/>
Program advanced settings	<input type="radio"/>	<input type="radio"/>
Program requirements	<input type="radio"/>	<input type="radio"/>

Correct Answer:

Answer Area

Configuration	App1	Package1
Deployment type requirements	<input type="radio"/>	<input type="radio"/>
Distribution settings	<input type="radio"/>	<input type="radio"/>
Program advanced settings	<input type="radio"/>	<input type="radio"/>
Program requirements	<input checked="" type="radio"/>	<input checked="" type="radio"/>

[Latest 70-243 Dumps](#)

[70-243 Study Guide](#)

[70-243 Exam Questions](#)