



# 650-127<sup>Q&As</sup>

Cisco Connected Grid (Engineer) Knowledge Verification

## Pass Cisco 650-127 Exam with 100% Guarantee

Free Download Real Questions & Answers **PDF** and **VCE** file from:

<https://www.lead4pass.com/650-127.html>

100% Passing Guarantee  
100% Money Back Assurance

Following Questions and Answers are all new published by Cisco  
Official Exam Center

-  **Instant Download** After Purchase
-  **100% Money Back** Guarantee
-  **365 Days** Free Update
-  **800,000+** Satisfied Customers





### QUESTION 1

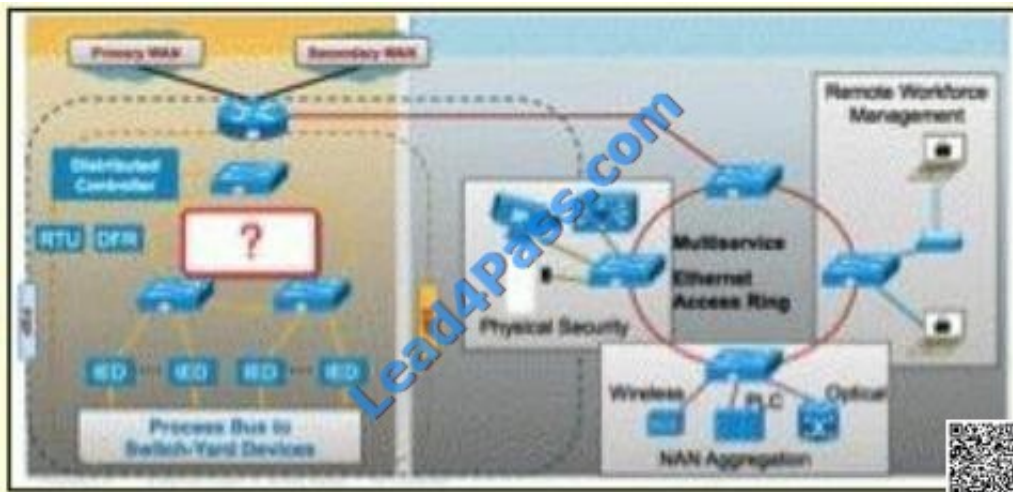
Which Cisco IOS software packages are not supported on the Cisco CGR 2010?

- A. UC packages
- B. IP Base
- C. Advanced Security
- D. Advanced IP Services

Correct Answer: A

### QUESTION 2

Refer to the exhibit. Which of these best describes the question mark?



- A. local area network
- B. multiservice Ethernet ring
- C. Token Ring network
- D. IEC 61850 station bus

Correct Answer: D

### QUESTION 3

Which product is included in the Cisco Smart Grid product offerings?



- A. ISR 2900 Series and Catalyst 2960
- B. All existing Cisco products
- C. Connected Grid Router CGR 2010 and Connected Grid Switch CGS 2520
- D. Smart Grid 3000 ruggedized switching platform

Correct Answer: C

---

#### QUESTION 4

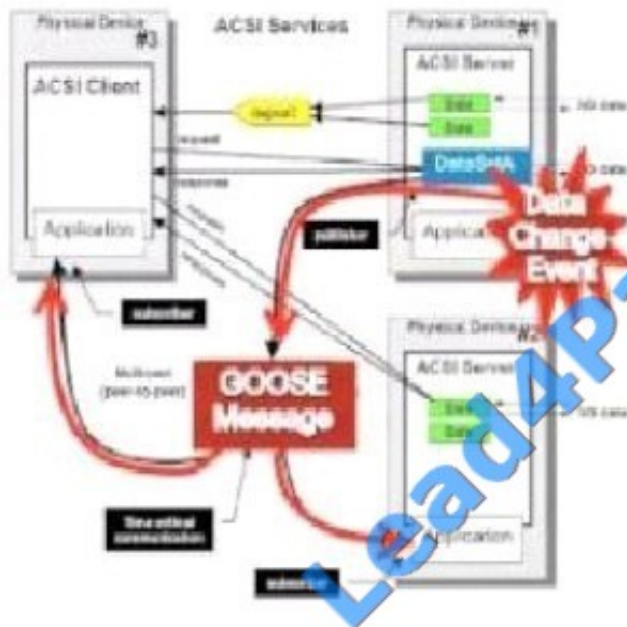
What is the correct time delay for a critical GOOSE Type-1 message?

- A. There is no specific time delay requirement.
- B. Fewer than 10 ms
- C. Less than 4 to 7 s
- D. Less than 3 to 10ms

Correct Answer: D



## CGS 2500 Series GOOSE Messaging Overview



- GOOSE messaging is based on a **publisher / subscriber** model.
- GOOSE Type-1 messages are Time critical (**delay < 3-10 ms**)  
For Example "Trip" Message
- In this Case, Physical Device#2 (PD2) and Physical Device#3 (PD3) have **subscribed** to DataSet#A on Physical Device#1 (PD1)- **Publisher**
- When the GOOSE control block is configured on PD1 to enable GOOSE messaging (See next slide for details) to monitor DataSet#A, an associated VLAN and Cos marking is also configured on PD1 (In addition to the Dest Multicast MAC address to be used).
- This VLAN and CoS Marking is used on the Network- switches to restrict the flooding of GOOSE traffic



### QUESTION 5

What GRWIC module is available for CGR2010?

- A. Cable modem module
- B. LMR module
- C. one- and two-port TI/EI modules
- D. VMSS module
- E. 802.11 wireless module

Correct Answer: C

[650-127 PDF Dumps](#)

[650-127 Study Guide](#)

[650-127 Braindumps](#)



To Read the [Whole Q&As](#), please purchase the [Complete Version](#) from [Our website](#).

## Try our product !

100% Guaranteed Success  
100% Money Back Guarantee  
365 Days Free Update  
Instant Download After Purchase  
24x7 Customer Support  
Average 99.9% Success Rate  
More than 800,000 Satisfied Customers Worldwide  
Multi-Platform capabilities - [Windows](#), [Mac](#), [Android](#), [iPhone](#), [iPod](#), [iPad](#), [Kindle](#)

We provide exam PDF and VCE of Cisco, Microsoft, IBM, CompTIA, Oracle and other IT Certifications. You can view Vendor list of All Certification Exams offered:

<https://www.lead4pass.com/allproducts>

## Need Help

Please provide as much detail as possible so we can best assist you.  
To update a previously submitted ticket:



 <p><b>One Year Free Update</b> Free update is available within One Year after your purchase. After One Year, you will get 50% discounts for updating. And we are proud to boast a 24/7 efficient Customer Support system via Email.</p>	 <p><b>Money Back Guarantee</b> To ensure that you are spending on quality products, we provide 100% money back guarantee for 30 days from the date of purchase.</p>	 <p><b>Security &amp; Privacy</b> We respect customer privacy. We use McAfee's security service to provide you with utmost security for your personal information &amp; peace of mind.</p>
---	---	--

Any charges made through this site will appear as Global Simulators Limited.  
All trademarks are the property of their respective owners.  
Copyright © lead4pass, All Rights Reserved.