



642-902^{Q&As}

Implementing cisco ip routing

Pass Cisco 642-902 Exam with 100% Guarantee

Free Download Real Questions & Answers **PDF** and **VCE** file from:

<https://www.lead4pass.com/642-902.html>

100% Passing Guarantee
100% Money Back Assurance

Following Questions and Answers are all new published by Cisco
Official Exam Center

-  **Instant Download** After Purchase
-  **100% Money Back** Guarantee
-  **365 Days** Free Update
-  **800,000+** Satisfied Customers





QUESTION 1

A network administrator has enabled OSPF across an NBMA network and has issued the command `ip ospf network nonbroadcast`. Given those facts, which two statements are true? (Choose two.)

- A. DR and BDR elections will occur.
- B. DR and BDR elections will not occur.
- C. All routers must be configured in a fully meshed topology with all other routers.
- D. The neighbor command is required to build adjacencies.
- E. Interfaces will automatically detect and build adjacencies with neighbor routers.

Correct Answer: AD

Even if there is only one router, broadcast multiaccess networks elect a DR and a BDR to serve as focal points for routing information. In contrast, point-to-point OSPF networks do not elect a DR because they can never include more than

two nodes.

Another type of OSPF network, Nonbroadcast Multiaccess (NBMA), can include more than two nodes. Therefore, NBMA will try to elect a DR and a BDR. Common NBMA implementations include Frame Relay, X.25, and SMDS. NBMA

networks follow rules at Layer 2 that prevent the delivery of broadcasts and multicasts.

A non-broadcast environment requires that all OSPF neighbors be manually configured. This is the default setting for physical interfaces with Frame Relay encapsulation, as well as for their point-to-multipoint subinterfaces. By manually

configuring each neighbor, OSPF knows exactly which neighbors need to participate and which neighbor is identified as the DR. Also, communication between neighbors is done via unicast instead of multicast. This configuration also requires

a full mesh and has the same weakness as the broadcast environment.

For non-broadcast networks the default Hello interval is 30 seconds and the Dead interval is four times the Hello interval, 120 seconds. Non-broadcast multi-access networks do elect a DR and BDR, due to their multi-access nature. In order

to set which router you want as the DR, you must set the priority in the neighbor statement to elect the neighbor as the DR. In order to manually configure who your neighbors are, the following command must be entered in router

configuration mode for the selected OSPF process:

```
neighbor ip_address
```

`ip_address` = the ip address of the neighbor.

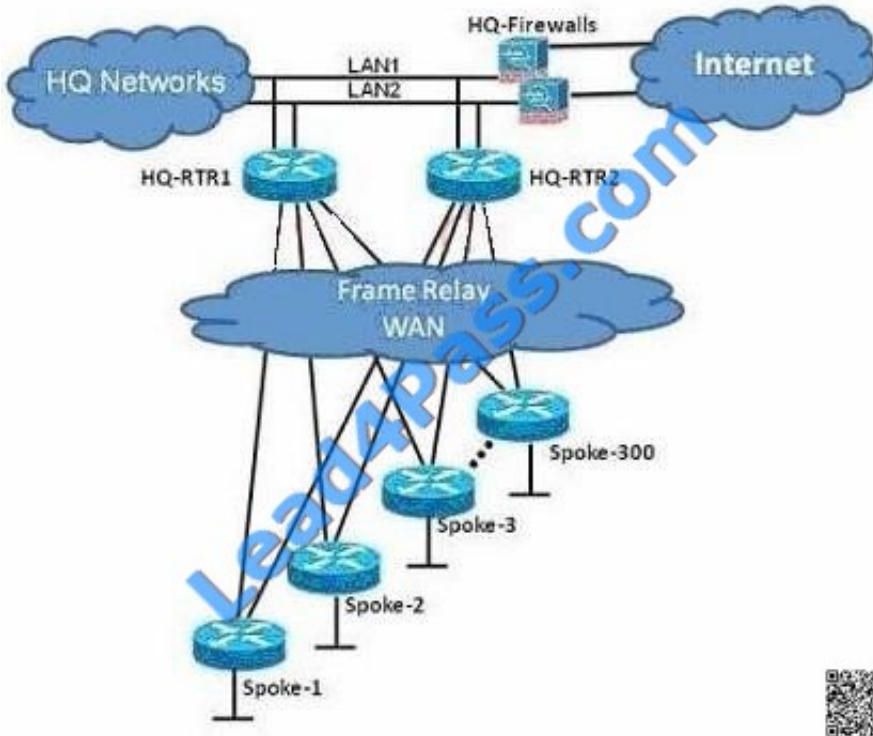
If you would like to set the priority of this router to become the DR, you will need to append the priority of the neighbor:

```
neighbor ip_address priority value
```



QUESTION 2

Refer to the exhibit.



You are the network administrator of the Route.com company. You have been tasked to implement a hub and spoke EIGRP topology over Frame Relay to provide connectivity between the networks at headquarters and all 300 spokes. Before you begin the actual implementation, which three pieces of information are more important to know than the others? (Choose three.)

- A. the Committed Information Rate of all the Frame Relay PVCs
- B. the Cisco IOS version running on all the routers
- C. the router model number of all the spoke routers
- D. the number of HQ networks connected behind the headquarter routers
- E. the routing policy, such as whether or not the spokes can be used as backup transient point between the two headquarter routers

Correct Answer: ABE

You have to know the committed information rate because it is a bandwidth associated with logical connection in a PVC. You also need to know the IOS version on all routers so that there is no conflict in versions. As per the topology, you need to know the routing policy because it will be used as a backup transient point between headquarter routers

QUESTION 3



What are two possible causes for EIGRP Stuck-In-Active routers? (Choose Two)

- A. Some query or reply packets are lost between the routers.
- B. The neighboring router starts receiving route updates from this router.
- C. A failure causes traffic on a link between two neighboring routers to flow in only one direction (unidirectional link).
- D. The neighboring router stops receiving ACK packets from this router.

Correct Answer: AC

Generally, a route shown as Active is going to be there for a very short period of time by the time you repeat the command, hopefully that Active route has gone Passive. Sometimes that doesn't happen, though, and the route becomes SIA Stuck In Active. A route becomes SIA when a query goes unanswered for so long that the neighbor relationship is reset. From experience, I can tell you that troubleshooting SIA routes is more of an art form than a science, but there are four

main reasons a route becomes SIA:

The link is unidirectional, so the query can't possibly be answered. The queried router's resources are unavailable, generally due to high CPU utilization.

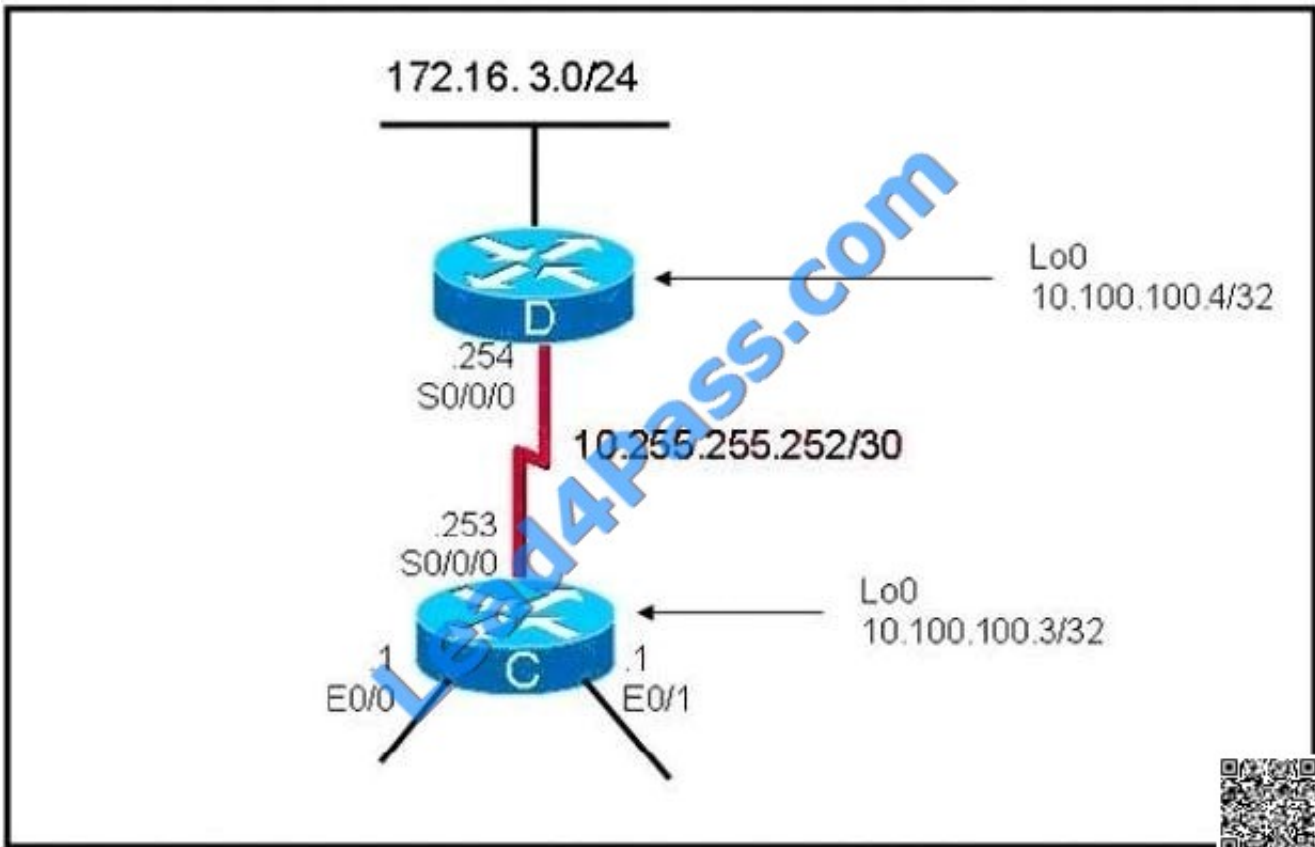
The queried router's memory is corrupt or otherwise unable to allow the router to answer the query.

The link between the two routers is of low quality, allowing just enough packets through to keep the neighbor relationship intact, but not good enough to allow the replies through.

To sum it up, routes generally become SIA when a neighbor either doesn't

QUESTION 4

Refer to the exhibit. Two routers are connected by Frame Relay and are running OSPF between them. Each router has been configured with the appropriate network statements under router ospf 1, but the routers are not forming an adjacency. Which of the following three commands could be configured on each router to correct this problem? (Choose three.)



- A. RouterC(config-if)#ip ospf network broadcast RouterD(config-if)#ip ospf network broadcast
- B. RouterC(config-if)#ip ospf network point-to-point RouterD(config-if)#ip ospf network point-to-point
- C. RouterC(config-router)#neighbor 10.100.100.4 RouterD(config-router)#neighbor 10.100.100.3
- D. RouterC(config-router)#neighbor 10.255.255.254 RouterD(config-router)#neighbor 10.255.255.253

Correct Answer: ABD

By default, Frame Relay is classified as a non-broadcast network, meaning it doesn't send any broadcasts/multicasts like RIP, OSPF or EIGRP updates across the network (hello packets of OSPF are multicast to 224.0.0.5). Hence, in NBMA network, the neighbors are not discovered automatically; they must be configured manually. There are two ways to simulate a broadcast model on an NBMA network:

+ Define the network type as broadcast with the "ip ospf network broadcast" interface sub- command + Configure the neighbor statements under router ospf mode (though configuring the neighbor statement on one end is sufficient to form adjacency, it is a good practice to have it configured on both the ends)

Besides these two ways, another way for making OSPF work with Frame Relay is configuring the network as a Point-to-Point network (or Point-to-Multipoint, notice that OSPF treats Point-to-Multipoint network as a collective of point-to-point links).

Some information about Point-to-Multipoint (or Point-to-Point) network:

Note: Point-to-Multipoint networks do not maintain a DR/BDR relationship.



QUESTION 5

Drag each OSPF router type to the approximate description on the left .Not all types are used.

Select and Place:

Drag each OSPF router type to the approximate description on the left. Not all types are used.

internal routers	have all interfaces in one area and maintain identical LSDBs
external routers	have interfaces attached to multiple areas, maintain separate LSDBs for each area
backbone routers	have at least one interface connected to area 0
ABRs	have at least one interface attached to an external internetwork such as EIGRP
ASBRs	
peer routers	

Correct Answer:

Drag each OSPF router type to the approximate description on the left. Not all types are used.

	internal routers
external routers	ABRs
	backbone routers
	ASBRs
peer routers	



To Read the [Whole Q&As](#), please purchase the [Complete Version](#) from [Our website](#).

Try our product !

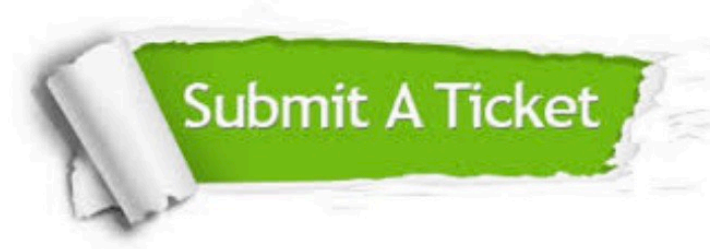
100% Guaranteed Success
100% Money Back Guarantee
365 Days Free Update
Instant Download After Purchase
24x7 Customer Support
Average 99.9% Success Rate
More than 800,000 Satisfied Customers Worldwide
Multi-Platform capabilities - [Windows](#), [Mac](#), [Android](#), [iPhone](#), [iPod](#), [iPad](#), [Kindle](#)

We provide exam PDF and VCE of Cisco, Microsoft, IBM, CompTIA, Oracle and other IT Certifications. You can view Vendor list of All Certification Exams offered:

<https://www.lead4pass.com/allproducts>

Need Help

Please provide as much detail as possible so we can best assist you.
To update a previously submitted ticket:



 <p>One Year Free Update Free update is available within One Year after your purchase. After One Year, you will get 50% discounts for updating. And we are proud to boast a 24/7 efficient Customer Support system via Email.</p>	 <p>Money Back Guarantee To ensure that you are spending on quality products, we provide 100% money back guarantee for 30 days from the date of purchase.</p>	 <p>Security & Privacy We respect customer privacy. We use McAfee's security service to provide you with utmost security for your personal information & peace of mind.</p>
---	---	--

Any charges made through this site will appear as Global Simulators Limited.
All trademarks are the property of their respective owners.
Copyright © lead4pass, All Rights Reserved.