



# 642-661<sup>Q&As</sup>

CCIP Configuring BGP on Cisco Routers (BGP)

**Pass Cisco 642-661 Exam with 100% Guarantee**

Free Download Real Questions & Answers **PDF** and **VCE** file from:

<https://www.lead4pass.com/642-661.html>

100% Passing Guarantee  
100% Money Back Assurance

Following Questions and Answers are all new published by Cisco  
Official Exam Center

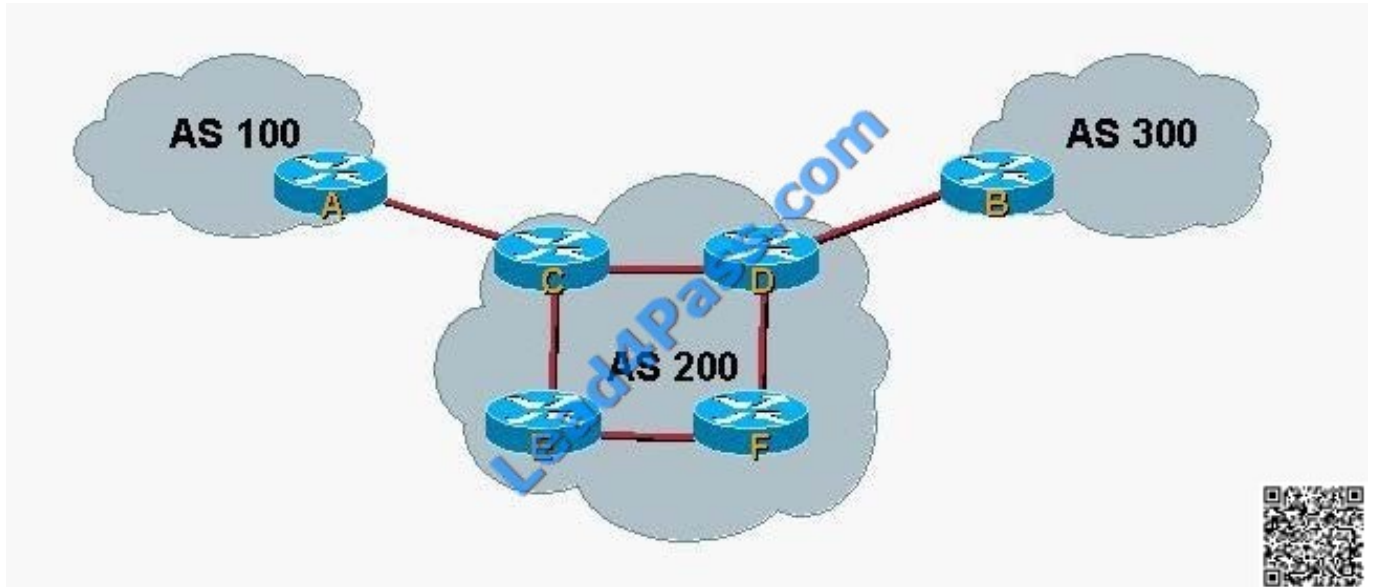
-  **Instant Download** After Purchase
-  **100% Money Back** Guarantee
-  **365 Days** Free Update
-  **800,000+** Satisfied Customers





### QUESTION 1

Refer to the exhibit. All routers are running BGP. Which of these statements is correct?



- A. EBGP is being run between Rtr-A and Rtr-C and between Rtr-B and Rtr-D. All connections between routers inside AS 200 are IBGP.
- B. All connections between all routers are EBGP.
- C. EBGP is being run between Rtr-A and Rtr-C, between Rtr-B and Rtr-D, and between Rtr-C and Rtr-D. Rtr-C and Rtr-D are route reflectors for Rtr-E and Rtr-F.
- D. EBGP is being run between Rtr-A and Rtr-C, between Rtr-B and Rtr-D, and between Rtr-C and Rtr-D. IBGP is being run between all other routers.
- E. All connections between all routers are IBGP.

Correct Answer: A

### QUESTION 2

What is one method an ISP can use to reduce the BGP requirements within the ISP network core?

- A. Use MPLS within the ISP network core.
- B. Use MPLS to connect to multihomed customers.
- C. Carry the external routes using an IGP like IS-IS.
- D. Use recursive routing to reach the BGP next hop.

Correct Answer: A



### QUESTION 3

Which three conditions can make a transit autonomous system unable to forward packets from one neighboring autonomous system to another neighboring autonomous system? (Choose three.)

- A. EBGP to IBGP route redistribution configuration errors
- B. no full-mesh IBGP and not using route reflectors or confederations
- C. non-directly connected IBGP neighbors
- D. sync enabled
- E. bgp next-hop not reachable
- F. non-directly connected EBGP neighbors

Correct Answer: BDE

---

### QUESTION 4

What does the following command accomplish? `sanjose#clear ip bgp 10.1.1.1 in prefix-filter`

- A. The sanjose router will perform an outbound soft reconfig to the 10.1.1.1 neighbor.
- B. The 10.1.1.1 router will perform an inbound softreconfig on the updates from the sanjose neighbor.
- C. The sanjose router will send out the ORF prefix-list so that a new route refresh will be received from the 10.1.1.1 neighbor.
- D. The bgp session between the sanjose and the 10.1.1.1 router will be reset so that all the new bgp updates from the sanjose router can be processed by the inbound prefix-list at the 10.1.1.1 router.
- E. The 10.1.1.1 router will send out the ORF prefix-list so that a new route refresh will be received from the sanjose neighbor.
- F. The bgp session between the sanjose and the 10.1.1.1 router will be reset so that all the new bgp updates from the 10.1.1.1 router can be processed by the inbound prefix-list at the sanjose router.

Correct Answer: C

---

### QUESTION 5

Given the following:

```
router bgp 65102 neighbor 10.1.1.1 remote-as 65103 neighbor 10.2.2.2 remote-as 65104 neighbor 172.16.1.4 remote-  
as 65102 neighbor 10.1.1.1 route-map setlp in ! route-map setlp permit 10 match community 1 set local-preference 150  
! route-map setlp permit 20 ! ip community-list 1 permit 65103:150
```

What will the configuration on R1 accomplish?



- A. Routes from AS 65103 marked with a Community of 65103: 150 will have the default Local Preference; all other routes will have a Local Preference of 150
- B. Routes from AS 65103 marked with a Community of 65103: 150 will have a Local Preference of 150; all other routes will have the default Local Preference.
- C. Routes from AS 65103 and AS 65104 marked with a Community of 65103: 150 will have the default Local Preference; all other routes will have a Local Preference of 150.
- D. Routes from AS 65103 and AS 65104 marked with a Community of 65103: 150 will have a Local Preference of 150; all other routes will have the default Local Preference.

Correct Answer: B

[Latest 642-661 Dumps](#)

[642-661 Exam Questions](#)

[642-661 Braindumps](#)



To Read the [Whole Q&As](#), please purchase the [Complete Version](#) from [Our website](#).

## Try our product !

100% Guaranteed Success  
100% Money Back Guarantee  
365 Days Free Update  
Instant Download After Purchase  
24x7 Customer Support  
Average 99.9% Success Rate  
More than 800,000 Satisfied Customers Worldwide  
Multi-Platform capabilities - [Windows](#), [Mac](#), [Android](#), [iPhone](#), [iPod](#), [iPad](#), [Kindle](#)

We provide exam PDF and VCE of Cisco, Microsoft, IBM, CompTIA, Oracle and other IT Certifications. You can view Vendor list of All Certification Exams offered:

<https://www.lead4pass.com/allproducts>

## Need Help

Please provide as much detail as possible so we can best assist you.  
To update a previously submitted ticket:



 <p><b>One Year Free Update</b> Free update is available within One Year after your purchase. After One Year, you will get 50% discounts for updating. And we are proud to boast a 24/7 efficient Customer Support system via Email.</p>	 <p><b>Money Back Guarantee</b> To ensure that you are spending on quality products, we provide 100% money back guarantee for 30 days from the date of purchase.</p>	 <p><b>Security &amp; Privacy</b> We respect customer privacy. We use McAfee's security service to provide you with utmost security for your personal information &amp; peace of mind.</p>
---	---	--

Any charges made through this site will appear as Global Simulators Limited.  
All trademarks are the property of their respective owners.  
Copyright © lead4pass, All Rights Reserved.