



# 642-648<sup>Q&As</sup>

Deploying Cisco ASA VPN Solutions (VPN v2.0)

## Pass Cisco 642-648 Exam with 100% Guarantee

Free Download Real Questions & Answers **PDF** and **VCE** file from:

<https://www.lead4pass.com/642-648.html>

100% Passing Guarantee  
100% Money Back Assurance

Following Questions and Answers are all new published by Cisco  
Official Exam Center

-  **Instant Download** After Purchase
-  **100% Money Back** Guarantee
-  **365 Days** Free Update
-  **800,000+** Satisfied Customers





### QUESTION 1

Authorization of a clientless SSL VPN defines the actions that a user may perform within a clientless SSL VPN session. Which statement is correct concerning the SSL VPN authorization process?

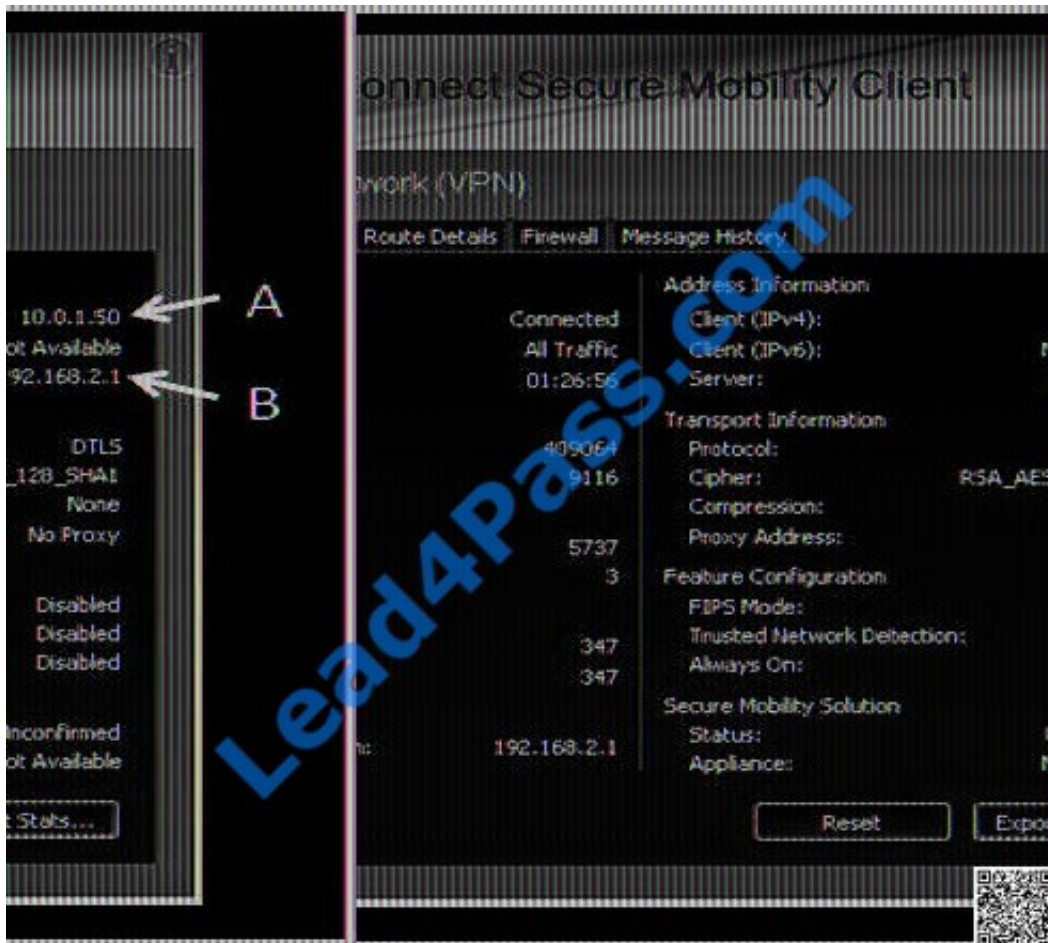
- A. Remote clients can be authorized by applying a dynamic access policy, which is configured on an external AAA server.
- B. Remote clients can be authorized externally by applying group parameters from an external database.
- C. Remote client authorization is supported by RADIUS and TACACS+ protocols.
- D. To configure external authorization, you must configure the Cisco ASA for cut-through proxy.

Correct Answer: B

[http://www.cisco.com/en/US/docs/security/asa/asa91/configuration/vpn/vpn\\_extserver.html](http://www.cisco.com/en/US/docs/security/asa/asa91/configuration/vpn/vpn_extserver.html)

### QUESTION 2

Refer to the exhibit.





After a remote user established a Cisco AnyConnect session from a wireless card through the Cisco ASA appliance of a partner to a remote server, the user opened the Cisco AnyConnect VPN Client Statistics Details screen.

What are the two sources of the IP addresses that are marked A and B? (Choose two.)

- A. IP address that is assigned to the wireless Ethernet adapter of the remote user
- B. IP address that is assigned to the remote user from the Cisco ASA address pool
- C. IP address of the Cisco ASA physical interface of the partner
- D. IP address of the Cisco ASA virtual HTTP server of the partner
- E. IP address of the default gateway router of the remote user
- F. IP address of the default gateway router of the partner

Correct Answer: BC

---

### QUESTION 3

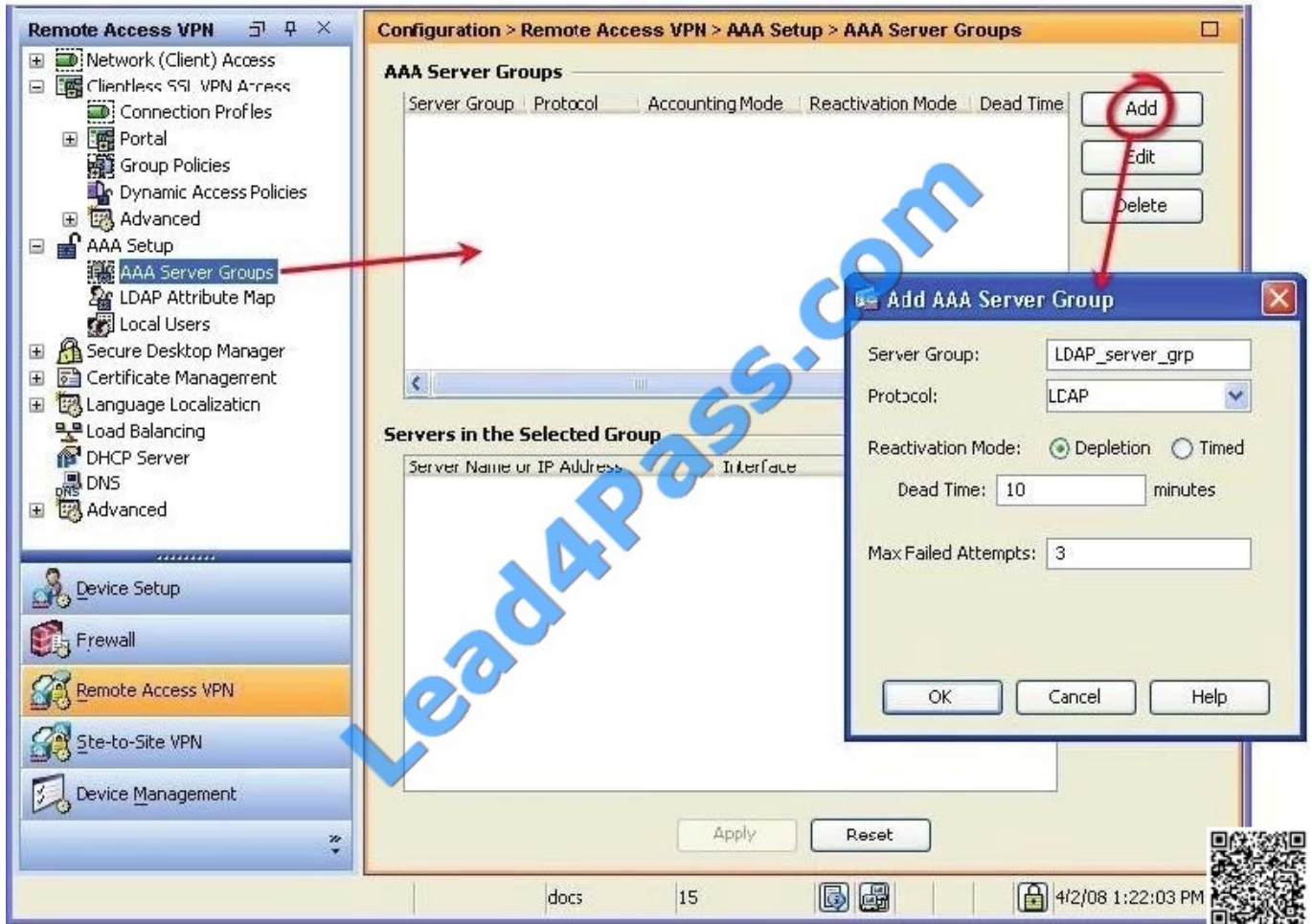
Which statement about CRL configuration is correct?

- A. CRL checking is enabled by default.
- B. The Cisco ASA relies on HTTPS access to procure the CRL list.
- C. The Cisco ASA relies on LDAP access to procure the CRL list.
- D. The Cisco Secure ACS can be configured as the CRL server.

Correct Answer: C

ASA SSLVPN deployment guide:

The security appliance supports various authentication methods: RSA one-time passwords, Radius, Kerberos, LDAP, NT Domain, TACACS, Local/Internal, digital certificates, and a combination of both authentication and certificates.



#### QUESTION 4

Which three options are characteristics of WebType ACLs? (Choose three.)

- A. They are assigned per-connection profile.
- B. They are assigned per-user or per-group policy.
- C. They can be defined in the Cisco AnyConnect Profile Editor.
- D. They support URL pattern matching.
- E. They support implicit deny all at the end of the ACL.
- F. They support standard and extended WebType ACLs.

Correct Answer: BDE

You can configure ACLs (Access Control Lists) to apply to user sessions. These are filters that permit or deny user access to specific networks, subnets, hosts, and web servers. If you do not define any filters, all connections are permitted. The security appliance supports only an inbound ACL on an interface. At the end of each ACL, there is an implicit, unwritten rule that denies all traffic that is not permitted. If traffic is not explicitly permitted by an access control entry (ACE), the security appliance denies it. ACEs are referred to as rules in this topic. This pane lets you add and edit



ACLs to be used for Clientless SSL VPN sessions, and the ACL entries each ACL contains. It also displays summary information about ACLs and ACEs, and lets you enable or disable them, and change their priority order.

### QUESTION 5

Refer to the exhibit.

Profile	Protocol	Encryption	Login Time	Duration	Bytes Tx	Bytes Rx
Clientless SSL-Tunnel DTL	Clientless SSL-Tunnel DTL	AES128	15:12:25 UTC Thu Jun 23 2011	0h:19m:59s	4481	100576

Subnet Mask / Protocol / Port	Encryption	Other
Subnet Mask / Protocol / Port	RC4	Tunnel ID: 5.1 Public IP: 192.168.2.10 Hashing: SHA1 Encapsulation: TLSv1.0 TCP Dst Port: 443 Authentication Mode: Certificate and user Idle Time Out: 30 Minutes Idle TO Left: 13 Minutes Client Type: Web Browser Client Ver: Mozilla/4.0 (compatible; MSIE 8
Subnet Mask / Protocol / Port	RC4	Tunnel ID: 5.2 Assigned IP: 10.0.1.50 Public IP: 192.168.2.10 Hashing: SHA1 Encapsulation: TLSv1.0 TCP Src Port: 4760 TCP Dst Port: 443 Authentication Mode: Certificate and user Idle Time Out: 30 Minutes Idle TO Left: 13 Minutes Client Type: SSL VPN Client Client Ver: Cisco AnyConnect VPN Agent f Packets Tx: 3

When you are testing SSL VPN in a non-production environment, certain variables in the Cisco ASDM session details can be viewed or changed under Configuration > AnyConnect Connection Profiles.

Which parameter can be viewed or changed in the AnyConnect Connection Profiles?

- A. Assigned IP address 10.0.1.50
- B. Client Type. SSL VPN Client
- C. Authentication Mode. Certificate and User Password
- D. Client Ver: Cisco AnyConnect VPN Agent for Windows

Correct Answer: C



VCE & PDF

Lead4Pass.com

<https://www.lead4pass.com/642-648.html>

2021 Latest lead4pass 642-648 PDF and VCE dumps Download

---

[Latest 642-648 Dumps](#)

[642-648 Practice Test](#)

[642-648 Braindumps](#)



To Read the [Whole Q&As](#), please purchase the [Complete Version](#) from [Our website](#).

## Try our product !

100% Guaranteed Success  
100% Money Back Guarantee  
365 Days Free Update  
Instant Download After Purchase  
24x7 Customer Support  
Average 99.9% Success Rate  
More than 800,000 Satisfied Customers Worldwide  
Multi-Platform capabilities - [Windows](#), [Mac](#), [Android](#), [iPhone](#), [iPod](#), [iPad](#), [Kindle](#)

We provide exam PDF and VCE of Cisco, Microsoft, IBM, CompTIA, Oracle and other IT Certifications. You can view Vendor list of All Certification Exams offered:

<https://www.lead4pass.com/allproducts>

## Need Help

Please provide as much detail as possible so we can best assist you.  
To update a previously submitted ticket:



 <p><b>One Year Free Update</b> Free update is available within One Year after your purchase. After One Year, you will get 50% discounts for updating. And we are proud to boast a 24/7 efficient Customer Support system via Email.</p>	 <p><b>Money Back Guarantee</b> To ensure that you are spending on quality products, we provide 100% money back guarantee for 30 days from the date of purchase.</p>	 <p><b>Security &amp; Privacy</b> We respect customer privacy. We use McAfee's security service to provide you with utmost security for your personal information &amp; peace of mind.</p>
---	---	--

Any charges made through this site will appear as Global Simulators Limited.  
All trademarks are the property of their respective owners.  
Copyright © lead4pass, All Rights Reserved.