



642-648^{Q&As}

Deploying Cisco ASA VPN Solutions (VPN v2.0)

Pass Cisco 642-648 Exam with 100% Guarantee

Free Download Real Questions & Answers **PDF** and **VCE** file from:

<https://www.lead4pass.com/642-648.html>

100% Passing Guarantee
100% Money Back Assurance

Following Questions and Answers are all new published by Cisco
Official Exam Center

-  **Instant Download** After Purchase
-  **100% Money Back** Guarantee
-  **365 Days** Free Update
-  **800,000+** Satisfied Customers





QUESTION 1

Refer to the exhibit.

```
tunnel-group BASIC-ANYCONNECT-PROFILE general-attributes
 authentication-server-group MY-RADIUS-SVRS
 secondary-authentication-server-group MY-LDAP-SVRS
!
tunnel-group BASIC-ANYCONNECT-PROFILE webvpn-attributes
 authentication aaa
```



Given the example that is shown, what can you determine?

- A. Users are required to perform RADIUS or LDAP authentication when connecting with the Cisco AnyConnect client.
- B. Users are required to perform AAA authentication when connecting via WebVPN.
- C. Users are required to perform double AAA authentication.
- D. The user access identity is prefilled at login, requiring users to enter only their password.

Correct Answer: C

QUESTION 2

Refer to the exhibit.

The screenshot shows the Cisco VPN Client interface with the following table of certificates:

| Number | Certificate | Store | Key Size | Validity |
|--------|-------------|-----------|----------|---------------------|
| 1 | contractor1 | Cisco | 1024 | until Jun 21, 2011 |
| 0 | contractor1 | Microsoft | 1024 | until Jun 21, 2011 |
| 2 | level_2 | Microsoft | 1024 | invalid: not active |



The "level_2" digital certificate was installed on a laptop. What can cause an "invalid not active" status message?

- A. On first use, a CA server-supplied passphrase is entered to validate the certificate.



- B. A "newly installed" digital certificate does not become active until it is validated by the peer device upon its first usage.
- C. The user has not clicked the Verify button within the Cisco VPN Client.
- D. The CA server and laptop PC clocks are out of sync.

Correct Answer: D

http://www.cisco.com/en/US/docs/security/asa/asa80/configuration/guide/cert_cfg.html


Certificates have a date and time that they become valid and that they expire. When the security appliance enrolls with a CA and gets a certificate, the security appliance checks that the current time is within the valid range for the certificate. If it is outside that range, enrollment fails. Same would apply to communication between ASA and PC

QUESTION 3

Clientless Applications

| Application Type | Panel | Filename |
|------------------|--------------------|---------------------|
| Standard | Application Access | app-access-hlp.inc |
| Standard | Browse Networks | file-access-hlp.inc |
| Standard | AnyConnect Client | net-access-hlp.inc |
| Standard | Web Access | web-access-hlp.inc |
| Plug-in | MetaFrame Access | ica-hlp.inc |
| Plug-in | Terminal Servers | rdp-hlp.inc |
| Plug-in | Telnet/SSH Servers | ssh,telnet-hlp.inc |
| Plug-in | VNC Connections | vnc-hlp.inc |



| | |
|--|--|
| | <ul style="list-style-type: none">• Network Access Manager• Telemetry• Highly secure remote-access connectivity• Single license per device model• Full Tunneling access to enterprise applications |
| op capabilities connect Secure g Full Tunneling | <ul style="list-style-type: none">• Includes clientless SSL VPN, Cisco Secure Desktop (including Host Scan), and support for Cisco AnyConnect Mobility. Provides Essentials capabilities, including access to enterprise applications |
| rs, and is available as Cisco IronPort Web | <ul style="list-style-type: none">• License is based on number of simultaneous use a single device or shared license• Cisco AnyConnect Secure Mobility also requires a Security Appliance license |
| | ses |
| to Essentials or | <ul style="list-style-type: none">• Enables Mobile OS platform compatibility• One license required per ASA platform, in addition Premium license |
| ties (such as auto- ses (not available with | <ul style="list-style-type: none">• Enables advanced endpoint assessment capabilities (remediation)• Required per device, in addition to Premium license AnyConnect Essentials) |
| ndent of where the g license and optional AnyConnect Premium | <ul style="list-style-type: none">• Enforce security policy in every transaction, independent of where user is located• For use with Cisco IronPort Web Security Appliance, AnyConnect Premium license, or standalone license  |

An engineer, while working at a home office, wants to launch the Cisco AnyConnect Client to the corporate offices while simultaneously printing network designs on the home network.

Without allowing access to the Internet, what are the two best ways for the administrator to configure this application? (Choose two.)

- A. Select the Tunnel All Networks policy.
- B. Select the Tunnel Network List Below policy.
- C. Select the Exclude Network List Below policy.
- D. Configure an exempted network list.
- E. Configure a standard access list and apply it to the network list.



F. Configure an extended access list and apply it to the network list.

Correct Answer: CE

http://www.cisco.com/en/US/products/ps6120/products_configuration_example09186a0080702992.shtml

QUESTION 4

In a remote-access VPN solution, on which device or devices can dead peer detection be configured?

- A. remote device
- B. headend device
- C. both headend and remote devices
- D. Dead peer detection can be configured only on site-to-site VPN.

Correct Answer: C

Dead Peer Detection Dead Peer Detection (DPD) ensures that the security appliance (gateway) or the client can quickly detect a condition where the peer is not responding, and the connection has failed.

Fields

?Gateway Side Detection--Uncheck the Disable check box to specify that DPD is performed by the security appliance (gateway). Enter the interval, from 30 to 3600 seconds, with which the security appliance performs

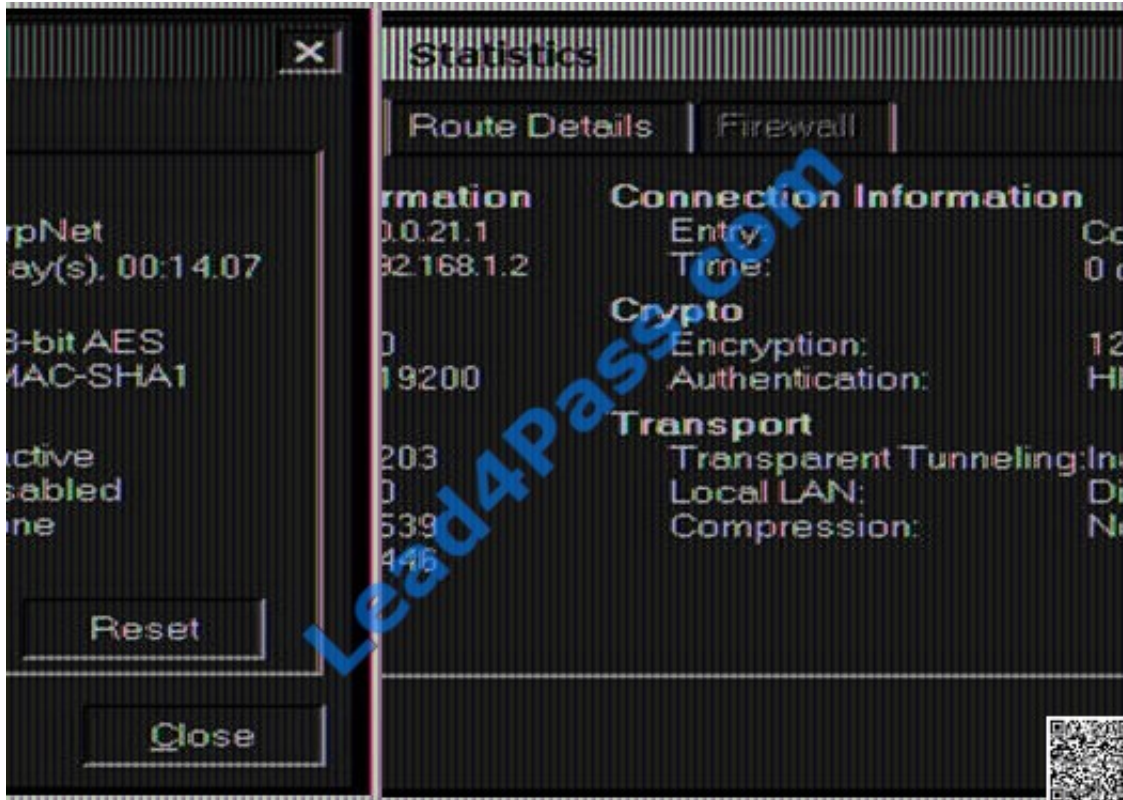
DPD.

?Client Side Detection--Uncheck the Disable check box to specify that DPD is performed by the client.

Enter the interval, from 30 to 3600 seconds, with which the client performs DPD.

QUESTION 5

Refer to the exhibit.



A new NOC engineer is troubleshooting a VPN connection.

Which statement about the fields within the Cisco VPN Client Statistics screen is correct?

- A. The ISP-assigned IP address of 10.0.21.1 is assigned to the VPN adapter of the PC.
- B. The IP address of the security appliance to which the Cisco VPN Client is connected is 192.168.1.2.
- C. CorpNet is the name of the Cisco ASA group policy whose tunnel parameters the connection is using.
- D. The ability of the client to send packets transparently and unencrypted through the tunnel for test purposes is turned off.
- E. With split tunneling enabled, the Cisco VPN Client registers no decrypted packets.

Correct Answer: B

[Latest 642-648 Dumps](#)

[642-648 VCE Dumps](#)

[642-648 Exam Questions](#)



To Read the [Whole Q&As](#), please purchase the [Complete Version](#) from [Our website](#).

Try our product !

100% Guaranteed Success
100% Money Back Guarantee
365 Days Free Update
Instant Download After Purchase
24x7 Customer Support
Average 99.9% Success Rate
More than 800,000 Satisfied Customers Worldwide
Multi-Platform capabilities - [Windows](#), [Mac](#), [Android](#), [iPhone](#), [iPod](#), [iPad](#), [Kindle](#)

We provide exam PDF and VCE of Cisco, Microsoft, IBM, CompTIA, Oracle and other IT Certifications. You can view Vendor list of All Certification Exams offered:

<https://www.lead4pass.com/allproducts>

Need Help

Please provide as much detail as possible so we can best assist you.
To update a previously submitted ticket:



| | | |
|---|---|--|
|  <p>One Year Free Update Free update is available within One Year after your purchase. After One Year, you will get 50% discounts for updating. And we are proud to boast a 24/7 efficient Customer Support system via Email.</p> |  <p>Money Back Guarantee To ensure that you are spending on quality products, we provide 100% money back guarantee for 30 days from the date of purchase.</p> |  <p>Security & Privacy We respect customer privacy. We use McAfee's security service to provide you with utmost security for your personal information & peace of mind.</p> |
|---|---|--|

Any charges made through this site will appear as Global Simulators Limited.
All trademarks are the property of their respective owners.
Copyright © lead4pass, All Rights Reserved.