



# 642-618<sup>Q&As</sup>

Deploying Cisco ASA Firewall Solutions (FIREWALL v2.0)

## Pass Cisco 642-618 Exam with 100% Guarantee

Free Download Real Questions & Answers **PDF** and **VCE** file from:

<https://www.lead4pass.com/642-618.html>

100% Passing Guarantee  
100% Money Back Assurance

Following Questions and Answers are all new published by Cisco  
Official Exam Center

-  **Instant Download** After Purchase
-  **100% Money Back** Guarantee
-  **365 Days** Free Update
-  **800,000+** Satisfied Customers





### QUESTION 1

With Cisco ASA active/standby failover, what is needed to enable subsecond failover?

- A. Use redundant interfaces.
- B. Enable the stateful failover interface between the primary and secondary Cisco ASA.
- C. Decrease the default unit failover polltime to 300 msec and the unit failover holdtime to 900 msec.
- D. Decrease the default number of monitored interfaces to 1.

Correct Answer: C

[http://www.cisco.com/en/US/docs/security/asa/asa83/asdm63/configuration\\_guide/ha\\_active\\_standby.html](http://www.cisco.com/en/US/docs/security/asa/asa83/asdm63/configuration_guide/ha_active_standby.html)

Configuring the Unit and Interface Health Poll Times The adaptive security appliance sends hello packets out of each data interface to monitor interface health. The appliance sends hello messages across the failover link to monitor unit health. If the adaptive security appliance does not receive a hello packet from the corresponding interface on the peer unit for over half of the hold time, then the additional interface testing begins. If a hello packet or a successful test result is not received within the specified hold time, the interface is marked as failed. Failover occurs if the number of failed interfaces meets the failover criteria.

Decreasing the poll and hold times enables the adaptive security appliance to detect and respond to interface failures more quickly, but may consume more system resources. Increasing the poll and hold times prevents the adaptive security appliance from failing over on networks with higher latency.

---

### QUESTION 2

Which option can cause the interactive setup script not to work on a Cisco ASA 5520 appliance running software version 8.4.1?

- A. The clock has not been set on the Cisco ASA appliance using the clock set command.
- B. The HTTP server has not been enabled using the http server enable command.
- C. The domain name has not been configured using the domain-name command.
- D. The inside interface IP address has not been configured using the ip address command.
- E. The management 0/0 interface has not been configured as management-only and assigned a name using the nameif command.

Correct Answer: E

<http://www.checkthenetwork.com/networksecurityCiscoASA1.asp> shows need for nameif and <http://www.cisco.com/en/US/docs/security/asa/asa72/configuration/guide/intparam.html> shows management only The ASA 5510 and higher adaptive security appliance also includes the following type: -management The management interface is a Fast Ethernet interface designed for management traffic only, and is specified as management0/0. You can, however, use it for through traffic if desired (see the management-only command). In

transparent firewall mode, you can use the management interface in addition to the two interfaces allowed for through traffic. You can also add subinterfaces to the management interface to provide management in each security context for



multiple context mode.

Append the subinterface ID to the physical interface ID separated by a period (.). In multiple context mode, enter the mapped name if one was assigned using the allocate- interface command.

For example, enter the following command:

```
hostname(config)# interface gigabitethernet0/1.1
```

Step 2 To name the interface, enter the following command: `hostname(config-if)# nameif name`

The name is a text string up to 48 characters, and is not case-sensitive. You can change the name by reentering this command with a new value. Do not enter the no form, because that command causes all commands that refer to that name

to be deleted.

Step 3 To set the security level, enter the following command:

```
hostname(config-if)# security-level number
```

 Where number is an integer between 0 (lowest) and 100 (highest).

Step 4 (Optional) To set an interface to management-only mode, enter the following command:

```
hostname(config-if)# management-only
```

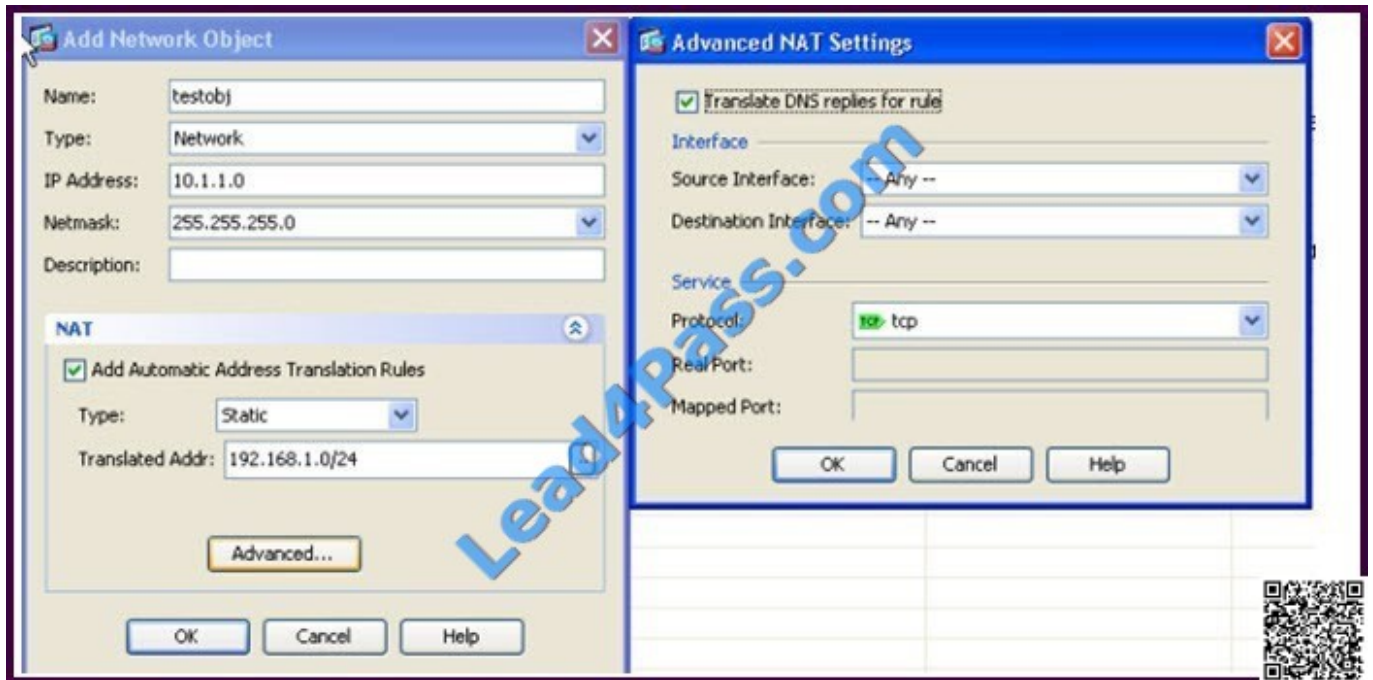
 The ASA 5510 and higher adaptive security appliance includes a dedicated management interface called Management 0/0, which is meant to support traffic to the security appliance. However, you can

configure any interface to be a management- only interface using the management-only command. Also, for Management 0/0, you can disable management-only mode so the interface can pass through traffic just like any other interface.

---

### QUESTION 3

Refer to the exhibit.



Which three CLI commands are generated by these Cisco ASDM configurations? (Choose three.)

- A. object-group network testobj
- B. object network testobj
- C. ip address 10.1.1.0 255.255.255.0
- D. subnet 10.1.1.0 255.255.255.0
- E. nat (any,any) static 192.168.1.0 dns
- F. nat (outside,inside) static 192.168.1.0 dns
- G. nat (inside,outside) static 192.168.1.0 dns
- H. nat (inside,any) static 192.168.1.0 dns
- I. nat (any,inside) static 192.168.1.0 dns

Correct Answer: BDE

[http://www.cisco.com/en/US/docs/security/asa/asa84/configuration/guide/inspect\\_basic.html#wp\\_1350877](http://www.cisco.com/en/US/docs/security/asa/asa84/configuration/guide/inspect_basic.html#wp_1350877)

When DNS inspection is enabled, DNS rewrite provides full support for NAT of DNS messages originating from any interface.

If a client on an inside network requests DNS resolution of an inside address from a DNS server on an outside interface, the DNS A-record is translated correctly.

If the DNS inspection engine is disabled, the A-record is not translated.



As long as DNS inspection remains enabled, you can configure DNS rewrite using the alias, static, or nat commands.

DNS Rewrite performs two functions:

-Translating a public address (the routable or "mapped" address) in a DNS reply to a private address (the "real" address) when the DNS client is on a private interface. -Translating a private address to a public address when the DNS client is

on the public interface.

#### QUESTION 4

Which two statements about Cisco ASA 8.2 NAT configurations are true? (Choose two.)

- A. NAT operations can be implemented using the NAT, global, and static commands.
- B. If nat-control is enabled and a connection does not need a translation, then an identity NAT configuration is required.
- C. NAT configurations can use the any keyword as the input or output interface definition.
- D. The NAT table is read and processed from the top down until a translation rule is matched.
- E. Auto NAT links the translation to a network object.

Correct Answer: AB

[http://www.cisco.com/en/US/products/ps6120/products\\_configuration\\_example09186a008046f3\\_1a.shtml#IN1](http://www.cisco.com/en/US/products/ps6120/products_configuration_example09186a008046f3_1a.shtml#IN1)

#### QUESTION 5

Refer to the exhibit.

```
S 10.2.2.0 255.255.255.0 [1/0] via 172.16.1.1C, dmz
S 10.3.3.0 255.255.255.0 [2/0] via 172.16.1.11, dmz
```


Which Cisco ASA CLI commands configure these static routes in the Cisco ASA routing table?

- A. route dmz 10.2.2.0 0.0.0.255 172.16.1.10 route dmz 10.3.3.0 0.0.0.255 172.16.1.11
- B. route dmz 10.2.2.0 0.0.0.255 172.16.1.10 1 route dmz 10.3.3.0 0.0.0.255 172.16.1.11 1
- C. route dmz 10.2.2.0 0.0.0.255 172.16.1.10 route dmz 10.3.3.0 0.0.0.255 172.16.1.11 2
- D. route dmz 10.2.2.0 255.255.255.0 172.16.1.10 route dmz 10.3.3.0 255.255.255.0 172.16.1.11
- E. route dmz 10.2.2.0 255.255.255.0 172.16.1.10 1 route dmz 10.3.3.0 255.255.255.0 172.16.1.11 1
- F. route dmz 10.2.2.0 255.255.255.0 172.16.1.10 route dmz 10.3.3.0 255.255.255.0 172.16.1.11 2

Correct Answer: F



[http://www.cisco.com/en/US/docs/security/asa/asa82/configuration/guide/route\\_static.html#wp1\\_121521](http://www.cisco.com/en/US/docs/security/asa/asa82/configuration/guide/route_static.html#wp1_121521)

Command	Purpose
<pre>route if name dest ip mask gateway ip [distance]</pre> <p>Example:</p> <pre>hostname(config)# route outside 10.10.10.0 255.255.255.0 192.168.1.1 [1]</pre>	<p>This enables you to add a static route.</p> <p>The <i>dest_ip</i> and <i>mask</i> is the IP address for the destination network and the <i>gateway_ip</i> is the address of the next-hop router. The addresses you specify for the static route are the addresses that are in the packet before entering the ASA and performing NAT.</p> <p>The <i>distance</i> is the administrative distance for the route. The default is 1 if you do not specify a value. Administrative distance is a parameter used to compare routes among different routing protocols. The default administrative distance for static routes is 1, giving it precedence over routes discovered by dynamic routing protocols but not directly connect routes.</p> <p>The default administrative distance for routes discovered by OSPF is 110. If a static route has the same administrative distance as a dynamic route, the static routes take precedence. Connected routes always take precedence over or dynamically discovered routes.</p> 

[Latest 642-618 Dumps](#)

[642-618 PDF Dumps](#)

[642-618 VCE Dumps](#)



To Read the [Whole Q&As](#), please purchase the [Complete Version](#) from [Our website](#).

## Try our product !

100% Guaranteed Success  
100% Money Back Guarantee  
365 Days Free Update  
Instant Download After Purchase  
24x7 Customer Support  
Average 99.9% Success Rate  
More than 800,000 Satisfied Customers Worldwide  
Multi-Platform capabilities - [Windows](#), [Mac](#), [Android](#), [iPhone](#), [iPod](#), [iPad](#), [Kindle](#)

We provide exam PDF and VCE of Cisco, Microsoft, IBM, CompTIA, Oracle and other IT Certifications. You can view Vendor list of All Certification Exams offered:

<https://www.lead4pass.com/allproducts>

## Need Help

Please provide as much detail as possible so we can best assist you.  
To update a previously submitted ticket:



 <p><b>One Year Free Update</b> Free update is available within One Year after your purchase. After One Year, you will get 50% discounts for updating. And we are proud to boast a 24/7 efficient Customer Support system via Email.</p>	 <p><b>Money Back Guarantee</b> To ensure that you are spending on quality products, we provide 100% money back guarantee for 30 days from the date of purchase.</p>	 <p><b>Security &amp; Privacy</b> We respect customer privacy. We use McAfee's security service to provide you with utmost security for your personal information &amp; peace of mind.</p>
---	---	--

Any charges made through this site will appear as Global Simulators Limited.  
All trademarks are the property of their respective owners.  
Copyright © lead4pass, All Rights Reserved.