



642-457^{Q&As}

Implementing Cisco Unified Communications Manager, Part 2 v8.0
(CIPT2 v8.0)

Pass Cisco 642-457 Exam with 100% Guarantee

Free Download Real Questions & Answers **PDF** and **VCE** file from:

<https://www.lead4pass.com/642-457.html>

100% Passing Guarantee
100% Money Back Assurance

Following Questions and Answers are all new published by Cisco
Official Exam Center

-  **Instant Download** After Purchase
-  **100% Money Back** Guarantee
-  **365 Days** Free Update
-  **800,000+** Satisfied Customers





QUESTION 1

This is the configuration on the voice gateway:

```
telephony-service max-ephones 30 max-dn 60 preference 0 srst mode auto-provision all srst dn line-mode dual srst dn  
template 3 srst ephone description srst fallback auto-provision phone srst ephone template 5
```

Which ephone-dn would be expected upon activation of SRST?

- A. ephone-dn 1 dual-line number 7001 description 7001 name 7001 ephone-dn-template 5 This DN is learned from srst fallback ephones
- B. ephone-dn 1 dual-line number 7001 description 7001 name 7001 ephone-dn-template 3 This DN is learned from srst fallback ephones
- C. ephone-dn 1 number 7001 description 7001 name 7001 ephone-dn-template 5 This DN is learned from srst fallback ephones
- D. ephone-dn 1 number 7001 description 7001 name 7001 ephone-dn-template 3 This DN is learned from srst fallback ephones

Correct Answer: A

QUESTION 2

When multiple Cisco Extension Mobility profiles exist, which actions take place when a user tries to log in to Cisco Extension Mobility?

- A. The login will fail because only a single Cisco Extension Mobility profile is allowed.
- B. The user must select the desired profile.
- C. The user must login to both profiles in the order they are presented.
- D. The user may login to both profiles in any order.
- E. Login will only be allowed to multiple profiles if the service parameter Allow Multiple Logins is enabled.

Correct Answer: B

QUESTION 3

Which three devices support the SAF Call Control Discovery protocol? (Choose three.)

- A. Cisco Unified Border Element
- B. Cisco Unity Connection
- C. Cisco IOS Gatekeeper
- D. Cisco Catalyst Switch



E. Cisco IOS Gateway

F. Cisco Unified Communications Manager

Correct Answer: AEF

QUESTION 4

Refer to the exhibit.

Region	Max Audio Bit Rate	Max Video Call Bit Rate (Includes Audio)	Link Loss Type
BR	8 kbps (G.729)	None	Lossy
Default	64 kbps (G.722, G.711)	None	Use System Default
SAF	8 kbps (G.729)	None	Use System Default

NOTE: Region(s) not displayed Use System Default Use System Default Use System Default

Regions	Max Audio Bit Rate	Max Video Call Bit Rate (Includes Audio)	Link Loss Type
BR Default SAF	Keep Current Setting	<input type="radio"/> Keep Current Setting <input type="radio"/> Use System Default <input checked="" type="radio"/> None <input type="radio"/> [] kbps	Lossy

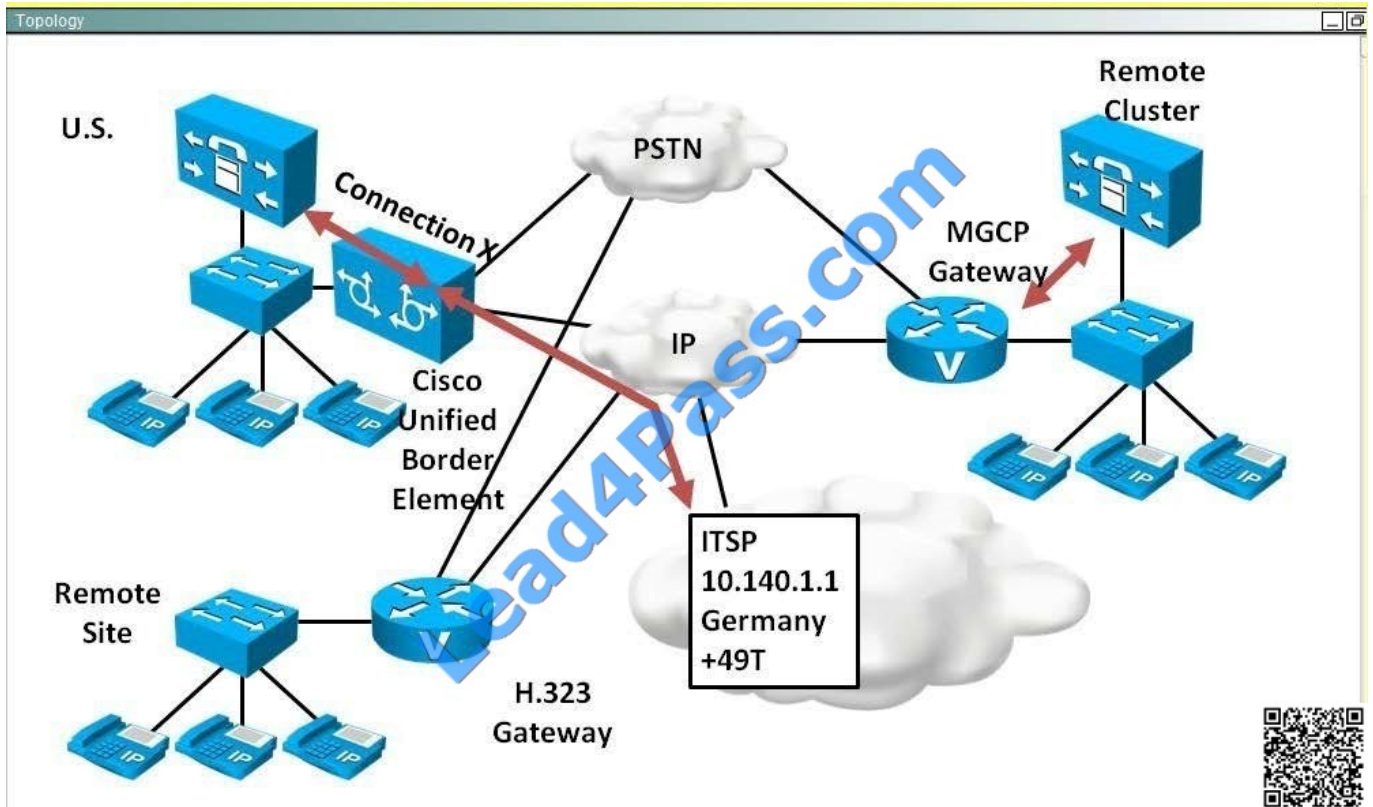
Which statement about the configuration between the Default and BR regions is true?

- A. Calls between the two regions can use either 64 kbps or 8 kbps.
- B. Calls between the two regions can use only the G.729 codec.
- C. Only 64 kbps will be used between the two regions because the link is "lossy".
- D. Both codecs can be used depending on the loss statistics of the link. When lossy conditions are high, the G.711 codec will be used.

Correct Answer: B

QUESTION 5

Refer to the following exhibits.



Users in the U.S dial Germany by calling 9011 49 followed by the remaining digits. What would be the most suitable configuration for Connection X?

- A. Configure a SIP trunk to 10.140.1.1 and a SIP route pattern +49T in Cisco Unified Communications Manager.
- B. Configure a SIP trunk to the Cisco Unified Border Element and route pattern +49T in Cisco Unified Communications Manager.
- C. configure a SIP trunk to the Cisco Unified Border Element. Configure a translation pattern for 9011.49T using DDI Predot prefix + and CSS to point to a route pattern partition \+! which uses the SIP trunk.
- D. Configure a SIP trunk to the ITSP. Configure a translation pattern for 9011.49T using DDI predot prefix + and CSS to point to a route pattern partition \+! which uses the SIP trunk.

Correct Answer: C



To Read the [Whole Q&As](#), please purchase the [Complete Version](#) from [Our website](#).

Try our product !

100% Guaranteed Success
100% Money Back Guarantee
365 Days Free Update
Instant Download After Purchase
24x7 Customer Support
Average 99.9% Success Rate
More than 800,000 Satisfied Customers Worldwide
Multi-Platform capabilities - [Windows](#), [Mac](#), [Android](#), [iPhone](#), [iPod](#), [iPad](#), [Kindle](#)

We provide exam PDF and VCE of Cisco, Microsoft, IBM, CompTIA, Oracle and other IT Certifications. You can view Vendor list of All Certification Exams offered:

<https://www.lead4pass.com/allproducts>

Need Help

Please provide as much detail as possible so we can best assist you.
To update a previously submitted ticket:



 <p>One Year Free Update Free update is available within One Year after your purchase. After One Year, you will get 50% discounts for updating. And we are proud to boast a 24/7 efficient Customer Support system via Email.</p>	 <p>Money Back Guarantee To ensure that you are spending on quality products, we provide 100% money back guarantee for 30 days from the date of purchase.</p>	 <p>Security & Privacy We respect customer privacy. We use McAfee's security service to provide you with utmost security for your personal information & peace of mind.</p>
---	---	--

Any charges made through this site will appear as Global Simulators Limited.
All trademarks are the property of their respective owners.
Copyright © lead4pass, All Rights Reserved.