

600-660^{Q&As}

Implementing Cisco Application Centric Infrastructure - Advanced

Pass Cisco 600-660 Exam with 100% Guarantee

Free Download Real Questions & Answers **PDF** and **VCE** file from:

<https://www.leads4pass.com/600-660.html>

100% Passing Guarantee
100% Money Back Assurance

Following Questions and Answers are all new published by Cisco
Official Exam Center

-  **Instant Download** After Purchase
-  **100% Money Back** Guarantee
-  **365 Days** Free Update
-  **800,000+** Satisfied Customers



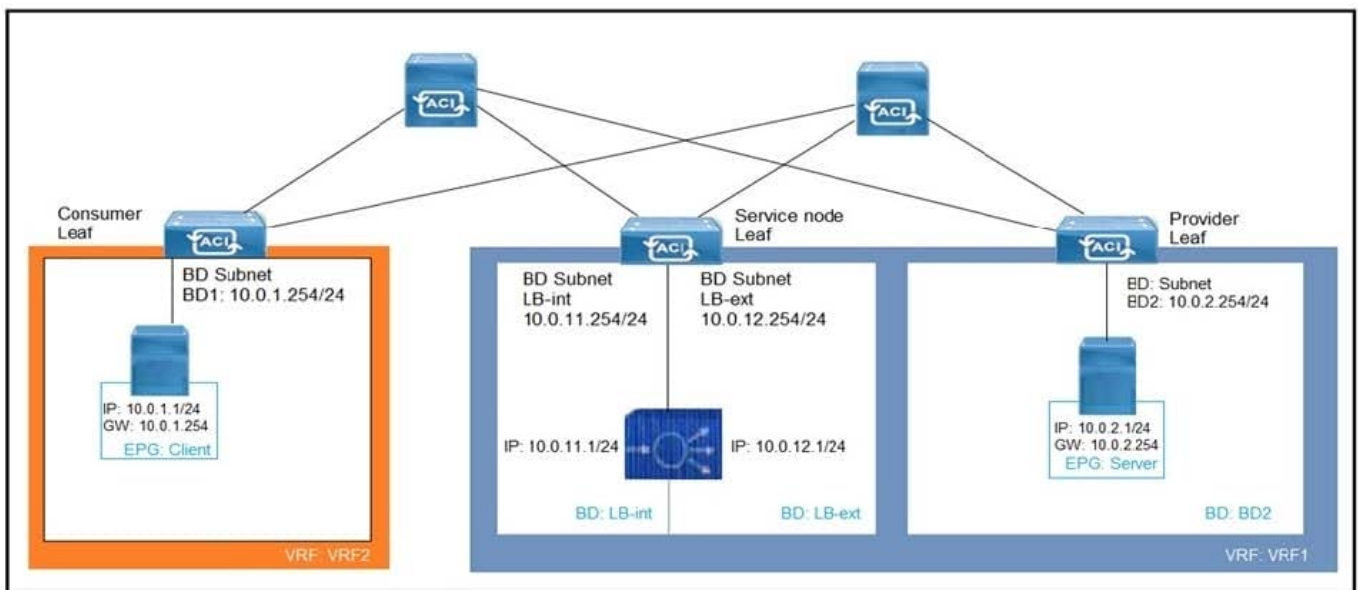
QUESTION 1

Which two actions are the Cisco best practices to configure NIC teaming load balancing for Cisco UCS B-Series blades that are connected to the Cisco ACI leaf switches? (Choose two.)

- A. Create vPC+
- B. Enable LACP active mode
- C. Create PAgP
- D. Create vPC
- E. Enable MAC pinning

Correct Answer: BE

QUESTION 2



Refer to the exhibit. What must be configured to allow the PBR node (LB-int) to monitor the availability of the endpoint that is in the EPG server?

- A. Endpoint Dataplane Learning
- B. Unicast Route disabled for client and server bridge domains
- C. PBR node tracking
- D. Direct Connect in the service graph template

Correct Answer: A

QUESTION 3

What are two characteristics of network-centric design in Cisco ACI? (Choose two.)

- A. There is open communication between EPGs
- B. EPGs are used for microsegmentation
- C. EPGs are different security zones
- D. Applications define the network requirements
- E. A bridge domain has one subnet and one EPG

Correct Answer: BE

QUESTION 4

A network engineer configured an active-active firewall cluster that is stretched across separate pods in the Cisco ACI fabric. Which two implementation setups for anycast services are available? (Choose two.)

- A. Modify the Cisco ACI contract scope
- B. Modify the MAC address on the second firewall
- C. Configure the firewalls behind an EPG subnet
- D. Deselect No Default SVI Gateway under EPG Subnet
- E. Deploy a Layer 4 to Layer 7 service graph with PBR

Correct Answer: BC

QUESTION 5**DRAG DROP**

A leaf receives unicast traffic that is destined to an unknown source, and spine proxy is enabled in the corresponding bridge domain. Drag and drop the Cisco ACI forwarding operations from the left into the order the operation occurs on the right.

Select and Place:

Answer Area

Spine lookup occurs dMACi or dIPi

Packet is sent out of the fabric

Packet is routed in VRF overlay-1 based on dIPo

Source leaf forwards the packet to anycast TEP encapsulated with VXLAN header

Packet reaches destination leaf and is VXLAN decapsulated

Step 1

Step 2

Step 3

Step 4

Step 5

Correct Answer:

Answer Area

- Source leaf forwards the packet to anycast TEP encapsulated with VXLAN header
- Spine lookup occurs dMACi or dIPi
- Packet is sent out of the fabric
- Packet reaches destination leaf and is VXLAN decapsulated
- Packet is routed in VRF overlay-1 based on dIPo