

# 4A0-C01<sup>Q&As</sup>

Nokia NRS II Composite Exam

**Pass Nokia 4A0-C01 Exam with 100% Guarantee**

Free Download Real Questions & Answers **PDF** and **VCE** file from:

<https://www.leads4pass.com/4a0-c01.html>

100% Passing Guarantee  
100% Money Back Assurance

Following Questions and Answers are all new published by Nokia  
Official Exam Center

-  **Instant Download** After Purchase
-  **100% Money Back** Guarantee
-  **365 Days** Free Update
-  **800,000+** Satisfied Customers



## QUESTION 1

A router running a link-state protocol sends an update to a neighbor. The neighbor sends an update back. Why would the neighbor do this?

- A. The neighbor's link-state database has newer information than what it received in the update.
- B. The neighbor sends the update as an acknowledgement.
- C. The neighbor's update indicates that it has run out of space in its LSDB.
- D. The neighbor's update indicates that the sequence number received is the same as the one already in its link-state database.

Correct Answer: A

---

## QUESTION 2

Which command can be used to verify the LDP settings for label distribution and retention?

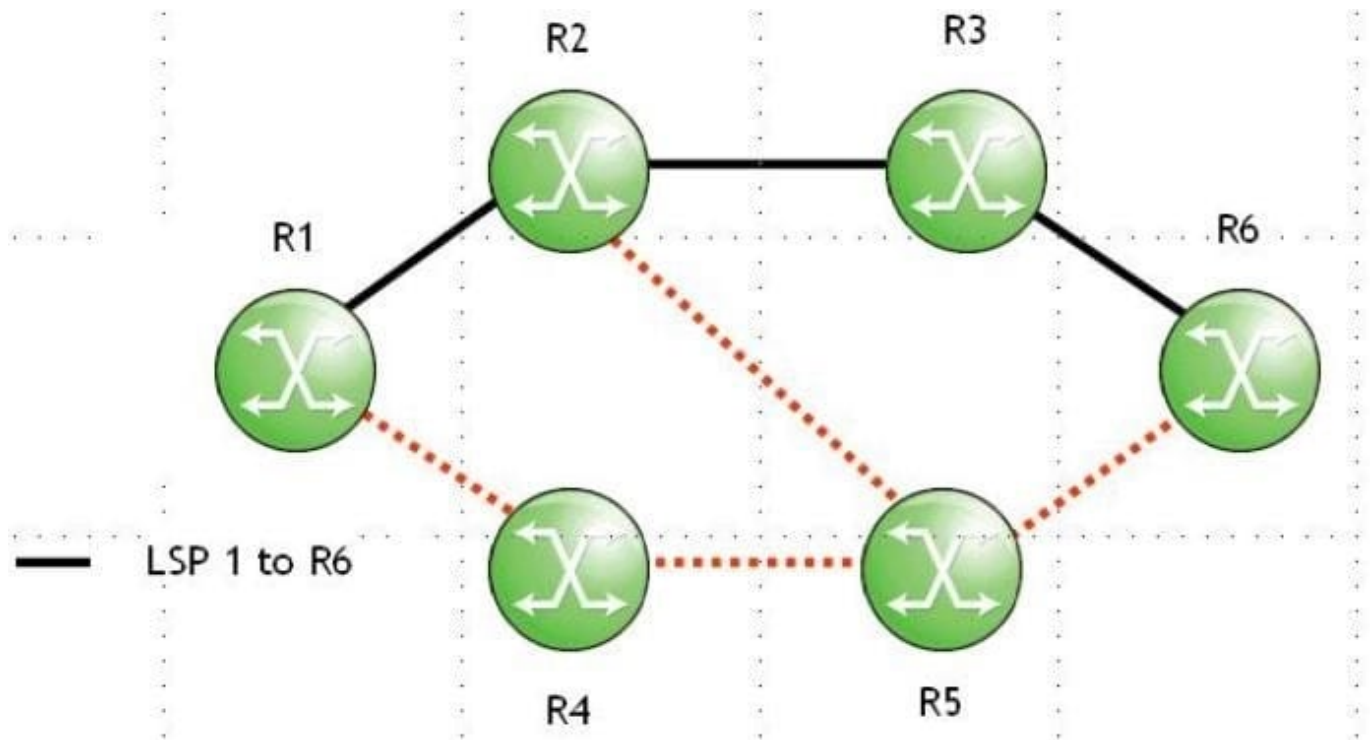
- A. show router ldp default
- B. show router ldp parameters
- C. show router ldp settings
- D. show router mpls settings
- E. show router mpls label-options

Correct Answer: B

---

## QUESTION 3

Click on the exhibit.



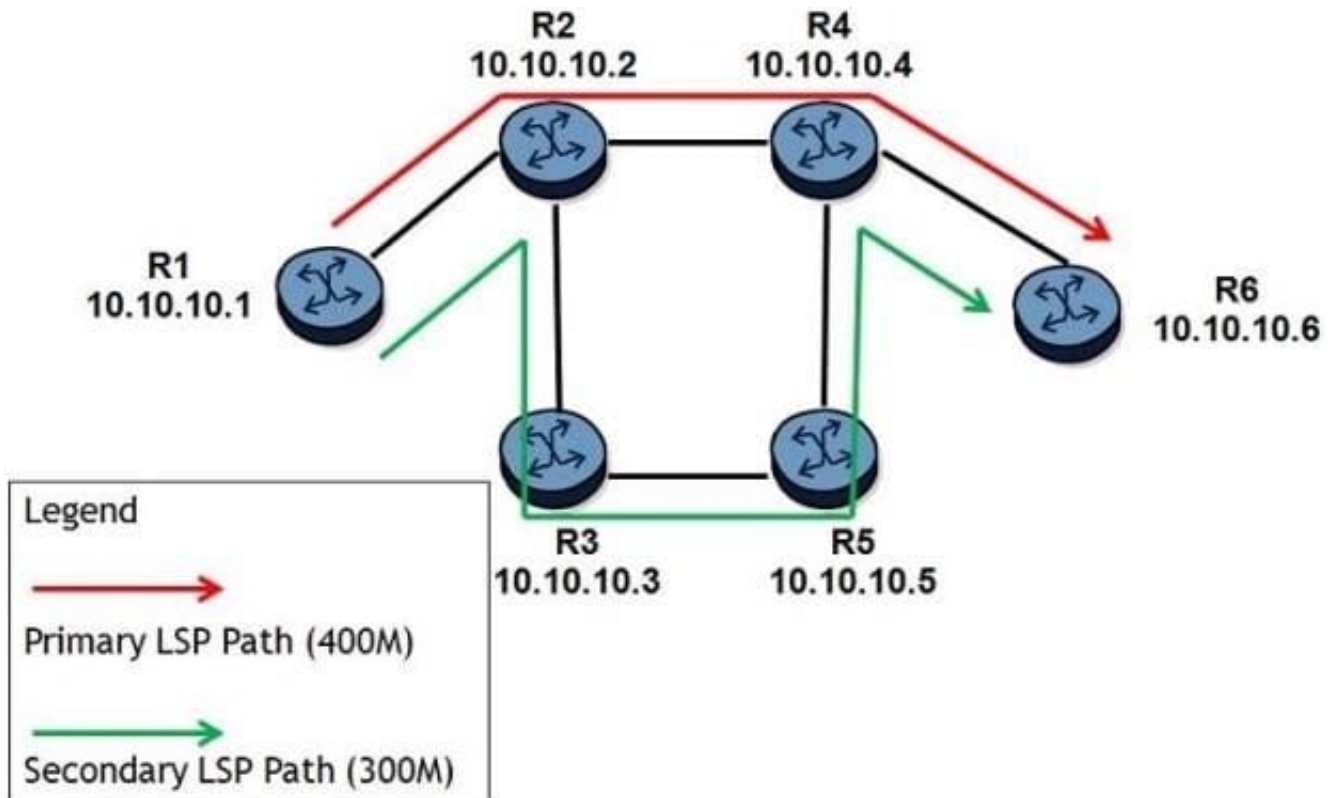
When router R1 forwards a PATH message to router R2, which of the following about the PATH message's IP header is TRUE?

- A. The options field is set to router alert.
- B. The source address is R1's egress interface address.
- C. The destination address is R2's ingress interface address.
- D. The HOP object includes R2's system address.

Correct Answer: A

**QUESTION 4**

Click on the exhibit.



All links have 1 Gbps unreserved bandwidth initially. After the LSP's primary and standby secondary paths are signaled, how much bandwidth is reserved on the link between routers R1 and R2?

- A. If Shared Explicit reservation style is used, 400Mbps is reserved.
- B. If Shared Explicit reservation style is used, 700Mbps is reserved.
- C. If Fixed Filter reservation style is used, 400Mbps is reserved.
- D. If Fixed Filter reservation style is used, 300Mbps is reserved.

Correct Answer: A

**QUESTION 5**

Which of the following is TRUE when the explicit null is implemented?

- A. The penultimate router will forward packets to the eLER, based on the IP header.
- B. The eLER will receive packets with a top label value of 0.
- C. The eLER will receive packets with a top label value of 3.
- D. The penultimate router will pop the top label from the packets.

Correct Answer: B

[Latest 4A0-C01 Dumps](#)

[4A0-C01 Practice Test](#)

[4A0-C01 Exam Questions](#)