

4A0-C01^{Q&As}

Nokia NRS II Composite Exam

Pass Nokia 4A0-C01 Exam with 100% Guarantee

Free Download Real Questions & Answers **PDF** and **VCE** file from:

<https://www.leads4pass.com/4a0-c01.html>

100% Passing Guarantee
100% Money Back Assurance

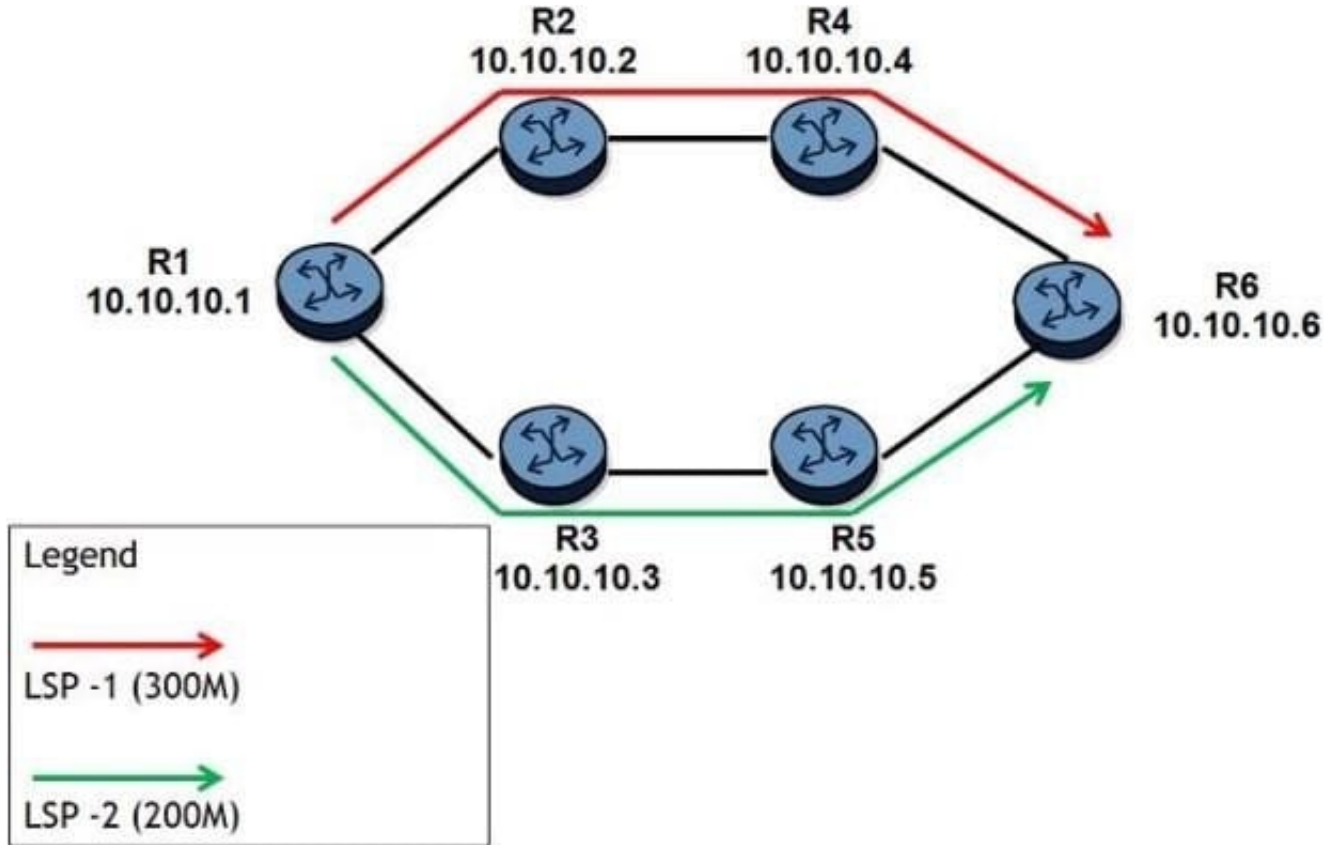
Following Questions and Answers are all new published by Nokia
Official Exam Center

-  **Instant Download** After Purchase
-  **100% Money Back** Guarantee
-  **365 Days** Free Update
-  **800,000+** Satisfied Customers



QUESTION 1

Click on the exhibit.



All links have 1 Gbps unreserved bandwidth initially and all LSPs have the least-fill feature enabled. After the two LSPs have been signaled as shown, two additional LSPs are configured.

LSP-3 is signaled first with 50Mbps reserved. LSP-4 is signaled after with 400Mbps reserved.

Which paths will CSPF choose for LSP-3 and LSP-4?

- A. Both LSP-3 and LSP-4 take R1-R2-R4-R6.
- B. Both LSP-3 and LSP-4 take R1-R3-R5-R6.
- C. LSP-3 takes R1-R3-R5-R6 and LSP-4 takes R1-R2-R4-R6.
- D. LSP-3 takes R1-R2-R4-R6 and LSP-4 takes R1-R3-R5-R6.
- E. CSPF randomly chooses one of the equal cost paths for the two LSPs.

Correct Answer: B

QUESTION 2

Which of the following is TRUE when the explicit null is implemented?

- A. The penultimate router will forward packets to the eLER, based on the IP header.
- B. The eLER will receive packets with a top label value of 0.
- C. The eLER will receive packets with a top label value of 3.
- D. The penultimate router will pop the top label from the packets.

Correct Answer: B

QUESTION 3

What are the two major differences between configuring an IES service and configuring VPWS or VPLS services? (Choose 2)

- A. IES does not support QoS.
- B. IES has a configurable IP-MTU
- C. A virtual route table must be configured for an IES service.
- D. An IES interface has an IP address assigned to it.

Correct Answer: BD

QUESTION 4

Which of the following statements best describes a route target?

- A. A route target is a BGP extended community used to identify the VRF table for a prefix at the receiving PE
- B. A route target is a mechanism from which VPRN controls the distribution of VPN routing information.
- C. Route target attributes are earned in a MP-BGP as attributes of the route.
- D. A route target is used by the PE router to identify the VRF that a VPN-IPv4 prefix is associated with.
- E. All of the above statements describe a route target
- F. None of the above statements describe a route target

Correct Answer: E

QUESTION 5

An OSPF router receives an update in which the sequence number, age, and checksum are the same as the entry already in the topological database. What action is taken by the router?

- A. The link state information is not populated in the database but is forwarded to all neighbors

- B. The link state information already in the database is overwritten and the age is reset
- C. The link state information is not populated in the database and an acknowledgement is sent
- D. The link state information is regarded as old and nothing is done.

Correct Answer: C

[4A0-C01 Study Guide](#)

[4A0-C01 Exam Questions](#)

[4A0-C01 Braindumps](#)