

4A0-110^{Q&As}

Alcatel-Lucent Advanced Troubleshooting

Pass Alcatel-Lucent 4A0-110 Exam with 100% Guarantee

Free Download Real Questions & Answers **PDF** and **VCE** file from:

<https://www.leads4pass.com/4a0-110.html>

100% Passing Guarantee
100% Money Back Assurance

Following Questions and Answers are all new published by Alcatel-Lucent Official Exam Center

- ⚙️ **Instant Download** After Purchase
- ⚙️ **100% Money Back** Guarantee
- ⚙️ **365 Days** Free Update
- ⚙️ **800,000+** Satisfied Customers



QUESTION 1

An operator has entered the following CLI commands to configured redistribution of OSPF routes into ISIS. None of the active OSPF routes are redistributed into ISIS, what is the problem in the CLI commands?

```
config>router>policy-options> begin
  policy-statement ospf-isis
    entry 10
      action accept
      from
        protocol ospf
      exit all
config>router>isis>
  area-id 69.1000
  export "ospf-isis"
  interface "toNode2"
```

- A. OSPF area has to be configured as NSSA
- B. Default-action has to be configured as accept
- C. Import policy has to be configured under OSPF
- D. The policy is still in edit mode, therefore it will not take any effect
- E. to protocol isis has to be added under entry 10

Correct Answer: D

QUESTION 2

Which of the following debug statements can be used to troubleshoot if the OSPF adjacency is staying at xstart state? Select two answers.

- A. Debug router ospf rtm
- B. Debug router ospf packet dbdescr
- C. Debug router ospf neighbor
- D. Debug router ospf packet hello
- E. Debug router ospf spf

Correct Answer: BC

QUESTION 3

A CSPF LSP with no bandwidth requirement is established from Node 1 (10.10.1.1) to Node 2 (10.10.1.2). OSPF-TE is enabled on all routers in the network. What commands can be used on Node 1 to determine if another LSP can be established to Node 2 with 400M bandwidth requirement? Choose all that apply.

- A. Show router lsp detail

- B. Show router ospf database detail
- C. Show router ospf opaque-database detail
- D. Tools perform router mpls cspf to 10.10.1.2 bandwidth 400
- E. Tools dump router mpls lspinfo

Correct Answer: CD

QUESTION 4

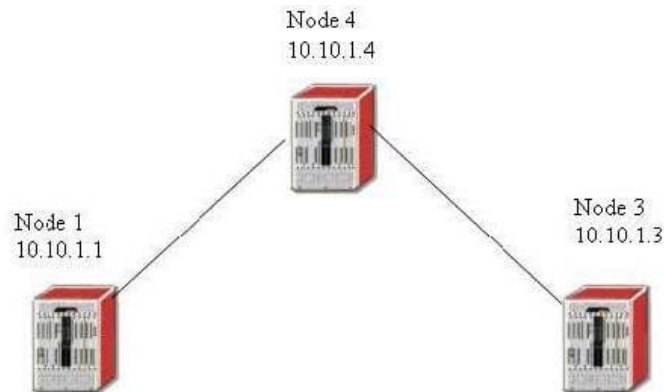
What are the typical RIP related issues found during troubleshooting?

- A. Interface filters
- B. Broadcast/Multicast mismatch
- C. Area id not match with neighbor
- D. Group name not match with neighbor
- E. Hop count too high

Correct Answer: ABE

QUESTION 5

LSP toNode3 is configured on Node1, all hops configured in the lsp path and lsp destination address are reachable via IGP. Both primary and secondary LSP paths are down with failure code equal to Route ToDestination. What is the potential cause of this problem?



```
config>router>
  mpls
  interface "system"
  exit
  interface "toPod4"
  exit
  interface "toPod3"
  exit
  path "toNode3-strict"
    hop 1 10.10.1.4 strict
    hop 2 10.10.1.3 strict
  no shutdown
  exit
  path "toNode3-loose"
  no shutdown
  exit
  lsp "toNode3"
  to 10.10.1.3
  cspf
  primary "toPod3-strict"
  exit
  secondary "toPod3-loose"
  standby
  exit
  no shutdown
  exit
  no shutdown
```

- A. A loose hop has to be configured in path toNode3-loose
- B. The secondary path should not be configured as standby path
- C. No traffic engineering information is exchanged by the IGP protocol
- D. CSPF cannot be enabled with strict hop path
- E. MPLS should not be enabled on interface toPod3

Correct Answer: C

[4A0-110 PDF Dumps](#)

[4A0-110 Practice Test](#)

[4A0-110 Exam Questions](#)