

## 4A0-110<sup>Q&As</sup>

Alcatel-Lucent Advanced Troubleshooting

### Pass Alcatel-Lucent 4A0-110 Exam with 100% Guarantee

Free Download Real Questions & Answers **PDF** and **VCE** file from:

<https://www.leads4pass.com/4a0-110.html>

100% Passing Guarantee  
100% Money Back Assurance

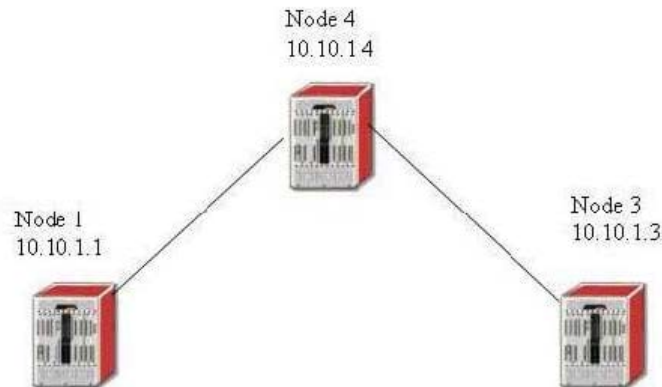
Following Questions and Answers are all new published by Alcatel-Lucent Official Exam Center

-  **Instant Download** After Purchase
-  **100% Money Back** Guarantee
-  **365 Days** Free Update
-  **800,000+** Satisfied Customers



## QUESTION 1

Based on the show display below, what should be done to further trouble the LSP problem? Choose all valid actions.



```

# show router mpls lsp toNode3 path toNode3 detail
=====
MPLS LSP toNode3 Path (Detail)
=====
Legend :
  @ - Detour Available          # - Detour In Use
  k - Bandwidth Protected      n - Node Protected
=====

LSP toNode3 Path toNode3
=====
LSP Name       : toNode3                Path LSP ID    : 1
From           : 10.10.1.1              To             : 10.10.1.3
Adm State      : Up                     Oper State     : Down
Path Name      : toNode3                Path Type      : Primary
Path Admin     : Up                     Path Oper      : Down
OutInterface   : n/a                    Out Label      : n/a
Path Up Time   : 0d 00:00:00            Path Dn Time   : 0d 00:01:12
Retry Limit    : 0                      Retry Timer    : 30 sec
RetryAttempt   : 1                      Next Retry In  : 19 sec
Bandwidth      : No Reservation         Oper Bandwidth : 0 Mbps
Hop Limit      : 255
Record Route   : Record                  Record Label   : Record
Oper MTU       : 9198                    Negotiated MTU : 9198
Adaptive       : Enabled                 MBB State      : N/A
Include Grps   :                         Exclude Grps    :
None
Path Trans     : 8                       CSFP Queries   : 0
Failure Code   : noRouteToDestination    Failure Node    : 10.10.1.1
ExplicitHops   :
  10.10.1.4    -> 10.10.1.3
Actual Hops    :
  No Hops Specified
  
```

- A. Check all the interface filters to make sure no LDP protocol is blocked
- B. Check all management filters to make sure no RSVP-TE protocol is blocked
- C. Verify all explicit hops are reachable via IGP
- D. Make sure MPLS is enabled on all appropriate interfaces
- E. Make sure LDP is enabled on all appropriate interfaces

Correct Answer: BCD

**QUESTION 2**

Based on the following CLI Output, why is the path toPod3-loose down?

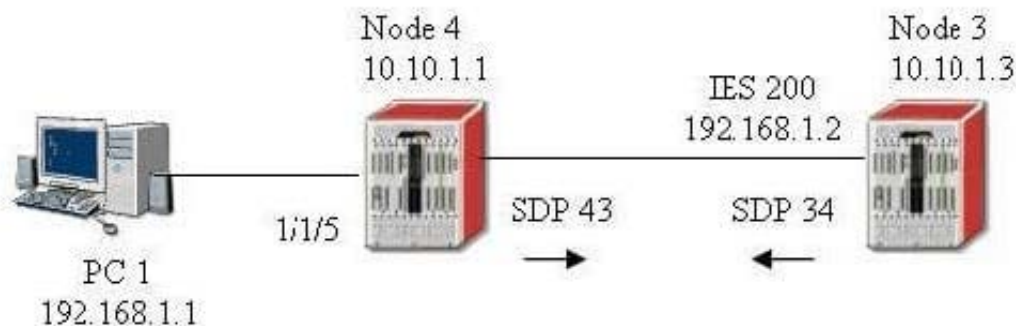
- A. Path toPod3-loose is down because it is secondary path with no standby configured
- B. Path toPod3-loose is down because there is no explicit hop specified
- C. Path toPod3-loose is down because CSPF is not enabled
- D. Path toPod3-loose is down because the destination address 0.10.1.3 is not reachable
- E. Path toPod3-loose is not down because the failure code is oError

Correct Answer: A

---

**QUESTION 3**

A spoke-sdp terminated IES configured on Node 3 is down due on SDP serviceMTUMismatch error. The same error is found on the corresponding SDP on Node 4. The VPLS is using the default service MTU. Which MTU value should be modified to bring the SDP up on both Nodes?



- A. IP MTU of the IES Interface on Node3
- B. Port MTU on Node 3 and Node 4
- C. SDP Path MTU on Node 3 and Node 4
- D. Service MTU on Node 4
- E. Path MTU on Node 3 and Node 4

Correct Answer: A

---

**QUESTION 4**

Which command can be used to view all interfaces configured under VPRN 300?

- A. Show router interfaces
- B. Show router interface vprn 300
- C. Show router 300 interfaces
- D. Show service vprn 300 interfaces
- E. Show service id 300 interfaces

Correct Answer: C

---

### QUESTION 5

A LSP is configured with one primary path and one secondary path as below. What configuration is required to make the LSP non-revertive. Choose the best answer.

```
config>router>mpls>
  path "toRouter3-loose"
    no shutdown
  path "toRouter3-backup"
    hop 1 10.10.1.2 loose
    no shutdown
  lsp toRouter3
    to 10.10.1.3
    cspf
    primary "toRouter3-loose"
      bandwidth 600
    secondary "toRouter3-backup"
      standby
      bandwidth 600
      no shutdown
```

- A. Turn off CSPF and remove all the bandwidth reservations
- B. Remove the primary path and configure both paths as secondary
- C. Under asp toRouter3? configure on-revertive
- D. It is not possible to configure the LSP as non-revertive
- E. MPLS fast re-route has to be enabled to make it non-revertive

Correct Answer: B