

## 4A0-106<sup>Q&As</sup>

Alcatel-Lucent Virtual Private Routed Networks

### Pass Alcatel-Lucent 4A0-106 Exam with 100% Guarantee

Free Download Real Questions & Answers **PDF** and **VCE** file from:

<https://www.lead4pass.com/4a0-106.html>

100% Passing Guarantee  
100% Money Back Assurance

Following Questions and Answers are all new published by Alcatel-Lucent Official Exam Center

- ⚙️ **Instant Download** After Purchase
- ⚙️ **100% Money Back** Guarantee
- ⚙️ **365 Days** Free Update
- ⚙️ **800,000+** Satisfied Customers



**QUESTION 1**

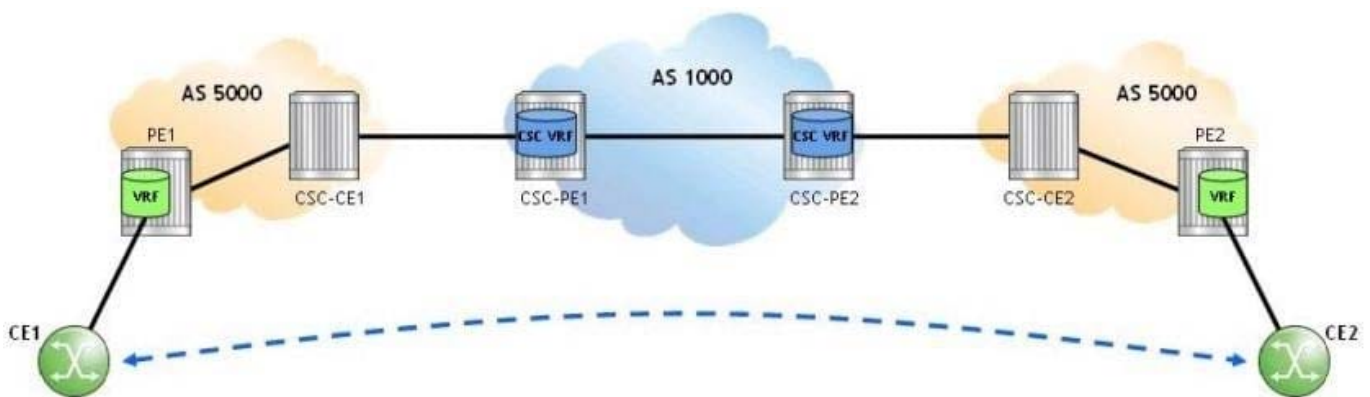
Which of the following is a characteristic of inter-AS model C VPRN?

- A. A data packet destined to a remote AS is encapsulated with three labels within the originating AS.
- B. The ASBR redistributes VPN-IPv4 updates to its ASBR eBGP peers.
- C. PE routers in different ASes exchange IPv4 routes directly between each other using eBGP.
- D. The advertising ASBR assigns a new label to the route before sending it via an MP-eBGP update to its ASBR peer.

Correct Answer: A

**QUESTION 2**

Click the exhibit.



A Carrier Supporting Carrier (CSC) VPRN is configured on an Alcatel-Lucent 7750 SR for a customer carrier offering VPRN services. Which of the following about this configuration is FALSE?

- A. In the CSC VPRN, configure an eBGP session between CSC-PE and CSC-CE and use the "advertiselabel vpn-ipv4" CLI command to enable the advertisement of VPN-IPv4 routes.
- B. When the customer carrier uses the same autonomous system number in various sites, use the "loopdetect off" CLI command to disable the loop detection functionality on CSC-CE and PE routers.
- C. On the CSC-PE routers, use the "carrier-carrier-vpn" CLI command to configure the VPRN service as CSC.
- D. Configure an iBGP session between PE1 and PE2 and use the "family vpn-ipv4" CLI command to directly exchange end-customer routes learned from CE1 and CE2.

Correct Answer: A

**QUESTION 3**

At what point does the Route Target become associated with a route?

- A. When the route is first received at the P from the PE
- B. When the route from the CE is populated into the VRF at the PE
- C. When the route from the PE is populated into the VRF at the CE
- D. When the route is propagated from the PE to the CE
- E. When the route is exported into the MP-BGP table from the VRF

Correct Answer: E

#### QUESTION 4

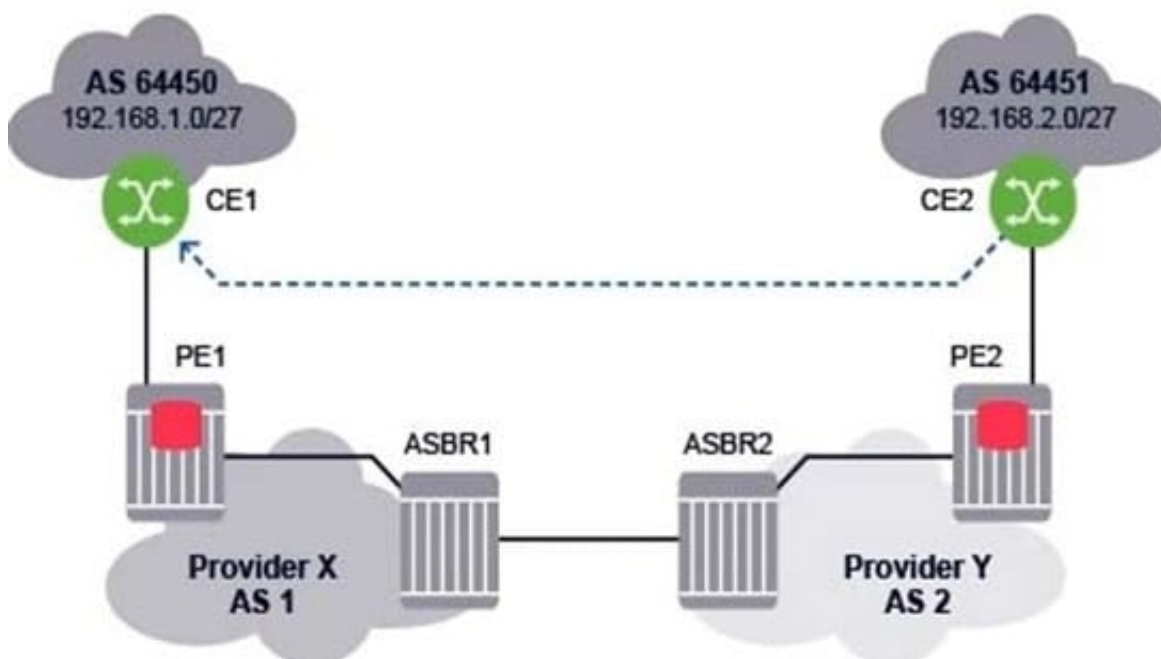
When does a router add a Route Target to a route?

- A. When the P receives the route from the PE.
- B. When the PE populates the route received from the CE into the VRF.
- C. When the PE propagates the route to the CE.
- D. When the PE exports the route from the VRF into the MP-BGP table.

Correct Answer: D

#### QUESTION 5

For the Inter-AS model VPRN, which of the following is FALSE when CE2 sends an IP packet to 192.168.1.1?



- A. PE2 pushes two labels on the IP packet and forwards it to ASBR2.
- B. ASBR2 forwards the IP packet with one label to ASBR1.
- C. ASBR1 label-switches the packet and forwards it with one label to PE1.
- D. PE1 forwards an unlabeled IP packet to CE1.

Correct Answer: C

[4A0-106 PDF Dumps](#)

[4A0-106 Study Guide](#)

[4A0-106 Braindumps](#)