

4A0-106^{Q&As}

Alcatel-Lucent Virtual Private Routed Networks

Pass Alcatel-Lucent 4A0-106 Exam with 100% Guarantee

Free Download Real Questions & Answers **PDF** and **VCE** file from:

<https://www.leads4pass.com/4a0-106.html>

100% Passing Guarantee
100% Money Back Assurance

Following Questions and Answers are all new published by Alcatel-Lucent Official Exam Center

-  **Instant Download** After Purchase
-  **100% Money Back** Guarantee
-  **365 Days** Free Update
-  **800,000+** Satisfied Customers



QUESTION 1

For a Carrier Supporting Carrier (CSC) VPRN where the customer carrier is an ISP that provides Internet connectivity to its end-customers, which of the following is TRUE?

- A. The customer carrier network must be MPLS-enabled.
- B. VPRN instances are created on the CSC-CE routers.
- C. All traffic exchanged between end-customers is carried over a single CSC VRF.
- D. Customer carrier PEs residing in different sites must run MP-iBGP between them to exchange customers\' routes.

Correct Answer: C

QUESTION 2

Based on the VPRN BGP decision process, which of the following routes is selected first?

- A. The route with the lowest MED.
- B. The route with the shortest AS Path.
- C. The route received from the lowest peer IP address.
- D. The route with the lowest Origin.

Correct Answer: B

QUESTION 3

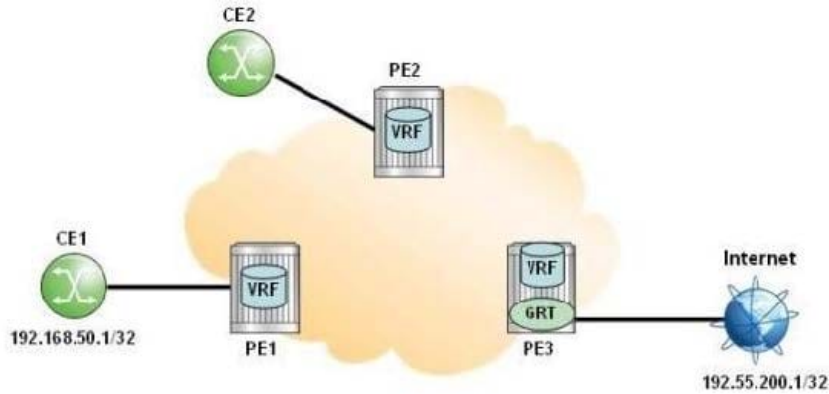
For a Carrier Supporting Carrier (CSC) VPRN where the customer carrier is an ISP that provides Internet connectivity to its end-customers, which of the following is FALSE?

- A. Customer carrier PE routers residing in different sites must run iBGP between them to exchange customers\' routes.
- B. MPLS can be used in the customer carrier network to improve scalability.
- C. The customer carrier network can be a pure IP network.
- D. A CSC VPRN is configured on the CSC-CE to forward data packets to the network provider.

Correct Answer: D

QUESTION 4

Click the exhibit.



Dest Prefix[Flags]	Type	Proto	Age	Pref
Next Hop [Interface Name]			Metric	
192.168.50.1	Remote	VPN Leak	00h00m06s	170
10.10.10.1 (tunneled)			0	

A.

Dest Prefix[Flags]	Type	Proto	Age	Pref
Next Hop [Interface Name]			Metric	
192.168.50.1	Remote	VPN Leak	00h00m06s	180
10.10.10.1 (tunneled)			0	

B.

Dest Prefix[Flags]	Type	Proto	Age	Pref
Next Hop [Interface Name]			Metric	
192.168.50.1	Remote	BGP VPN	00h00m06s	170
10.10.10.1 (tunneled)			0	

C.

Dest Prefix[Flags]	Type	Proto	Age	Pref
Next Hop [Interface Name]			Metric	
192.168.50.1	Remote	BGP VPN	00h00m06s	180
10.10.10.1 (tunneled)			0	

D.

Internet access using route leaking between the VRF and the global routing table is configured in the network. Which of the following is the correct output of route 192.168.50.1 in the global routing table of PE3?

- A. A
- B. B
- C. C
- D. D

Correct Answer: B

QUESTION 5

For a Carrier Supporting Carrier (CSC) VPRN where the customer carrier is an ISP that provides Internet connectivity to its end-customers, which of the following is FALSE?

- A. All traffic exchanged between end-customers is carried over a single CSC VRF.
- B. Customer carrier PE routers residing in different sites must run eBGP between them to exchange customers' routes.
- C. The customer carrier network can be a pure IP network.
- D. MPLS can be used in the customer carrier network to improve scalability.

Correct Answer: B

[Latest 4A0-106 Dumps](#)

[4A0-106 Practice Test](#)

[4A0-106 Braindumps](#)