

4A0-106^{Q&As}

Alcatel-Lucent Virtual Private Routed Networks

Pass Alcatel-Lucent 4A0-106 Exam with 100% Guarantee

Free Download Real Questions & Answers **PDF** and **VCE** file from:

<https://www.leads4pass.com/4a0-106.html>

100% Passing Guarantee
100% Money Back Assurance

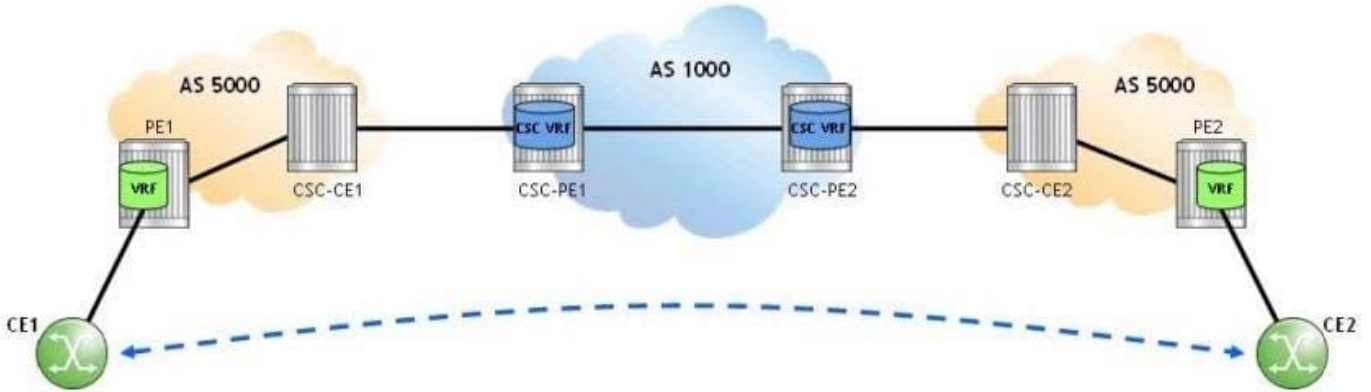
Following Questions and Answers are all new published by Alcatel-Lucent Official Exam Center

-  **Instant Download** After Purchase
-  **100% Money Back** Guarantee
-  **365 Days** Free Update
-  **800,000+** Satisfied Customers



QUESTION 1

Click the exhibit.



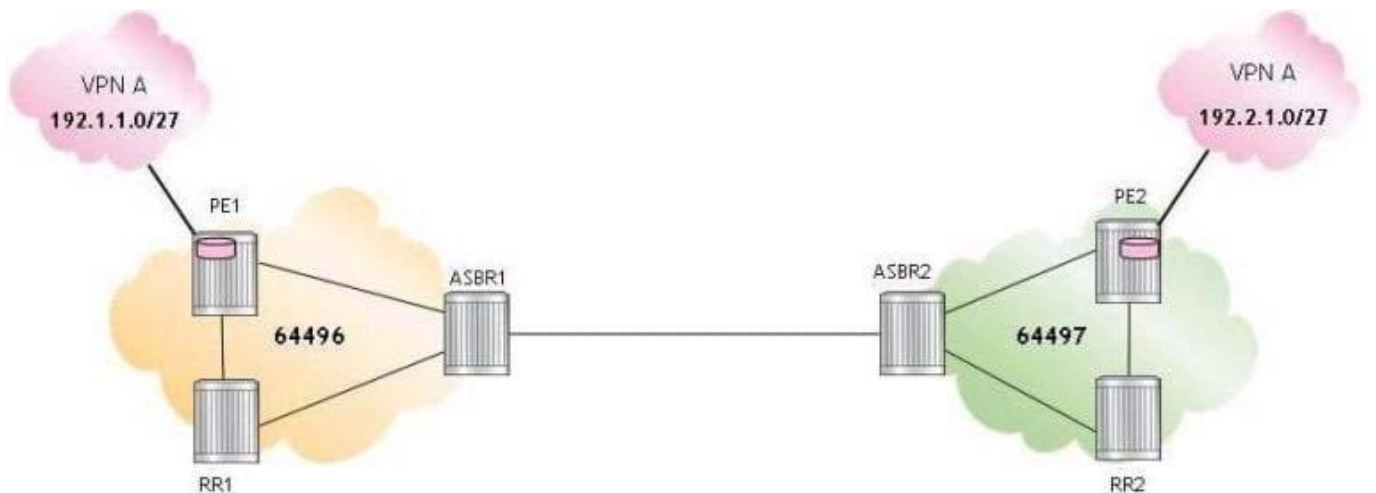
A Carrier Supporting Carrier (CSC) VPRN is configured on an Alcatel-Lucent 7750 SR for a customer carrier offering VPRN services. Which of the following about this configuration is FALSE?

- A. In the CSC VPRN, configure an eBGP session between CSC-PE and CSC-CE and use the "advertiselabel vpn-ipv4" CLI command to enable the advertisement of VPN-IPv4 routes.
- B. When the customer carrier uses the same autonomous system number in various sites, use the "loopdetect off" CLI command to disable the loop detection functionality on CSC-CE and PE routers.
- C. On the CSC-PE routers, use the "carrier-carrier-vpn" CLI command to configure the VPRN service as CSC.
- D. Configure an iBGP session between PE1 and PE2 and use the "family vpn-ipv4" CLI command to directly exchange end-customer routes learned from CE1 and CE2.

Correct Answer: A

QUESTION 2

Click the exhibit.



For the inter-AS model C VPRN, which of the following is FALSE when an IP packet is sent from 192.1.1.1 to 192.2.1.1?

- A. PE1 pushes two labels on the IP packet and forwards it to ASBR1.
- B. ASBR1 pops the LDP label, swaps the BGP label and forwards the IP packet to ASBR2.
- C. ASBR2 forwards the IP packet with two labels to PE2.
- D. PE2 pops the labels and forwards the unlabeled IP packet to its destination.

Correct Answer: A

QUESTION 3

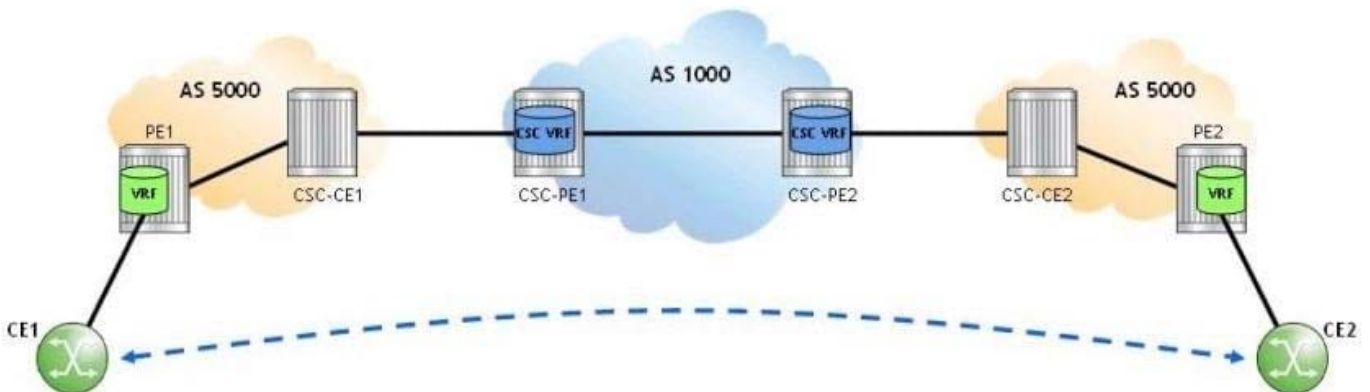
Which of the following is a benefit of a hub and spoke VPRN topology?

- A. Reduced number of VPN tunnels that need to be managed.
- B. Optimal routing between all sites.
- C. Limited configuration required on the hub PE device.
- D. Site to site redundancy support.

Correct Answer: A

QUESTION 4

Click the exhibit.



A Carrier Supporting Carrier (CSC) VPRN is configured on an Alcatel-Lucent 7750 SR for a customer carrier offering VPRN services. Which of the following configuration steps is NOT required?

- A. Creating an export policy on CSC-CE1 and CSC-CE2 to advertise local PE addresses to the network provider.
- B. Configuring eBGP between CSC-CE and CSC-PE routers; setting the address family to IPv4; and enabling the advertisement of labels for IPv4 routes.

C. Configuring iBGP between PE and CSC-CE within each customer carrier site; setting the address family to IPv4; and enabling the advertisement of labels for IPv4 routes.

D. Configuring MP-iBGP between PE1 and PE2; setting the address family to IPv4; and enabling the advertisement of labels for IPv4 routes.

Correct Answer: D

QUESTION 5

You are configuring a VPLS spoke termination to a VPRN on an Alcatel-Lucent 7750 SR. If LDP is used for all transport tunnels, what type of sessions are established by the VPRN PE router that is configured with the spoke termination?

A. T-LDP and LDP sessions with the other VPRN PE routers and the VPLS PE router

B. T-LDP sessions with the other VPRN PE routers and the VPLS PE router

C. LDP sessions with the other VPRN PE routers and the VPLS PE router

D. LDP sessions with the other VPRN PE routers, and both T-LDP and LDP sessions with the VPLS PE router

E. T-LDP and LDP sessions with the other VPRN PE routers and LDP sessions with the VPLS PE router

Correct Answer: D

[Latest 4A0-106 Dumps](#)

[4A0-106 Practice Test](#)

[4A0-106 Exam Questions](#)