

4A0-105^{Q&As}

Alcatel-Lucent Virtual Private LAN Services

Pass Alcatel-Lucent 4A0-105 Exam with 100% Guarantee

Free Download Real Questions & Answers **PDF** and **VCE** file from:

<https://www.leads4pass.com/4a0-105.html>

100% Passing Guarantee
100% Money Back Assurance

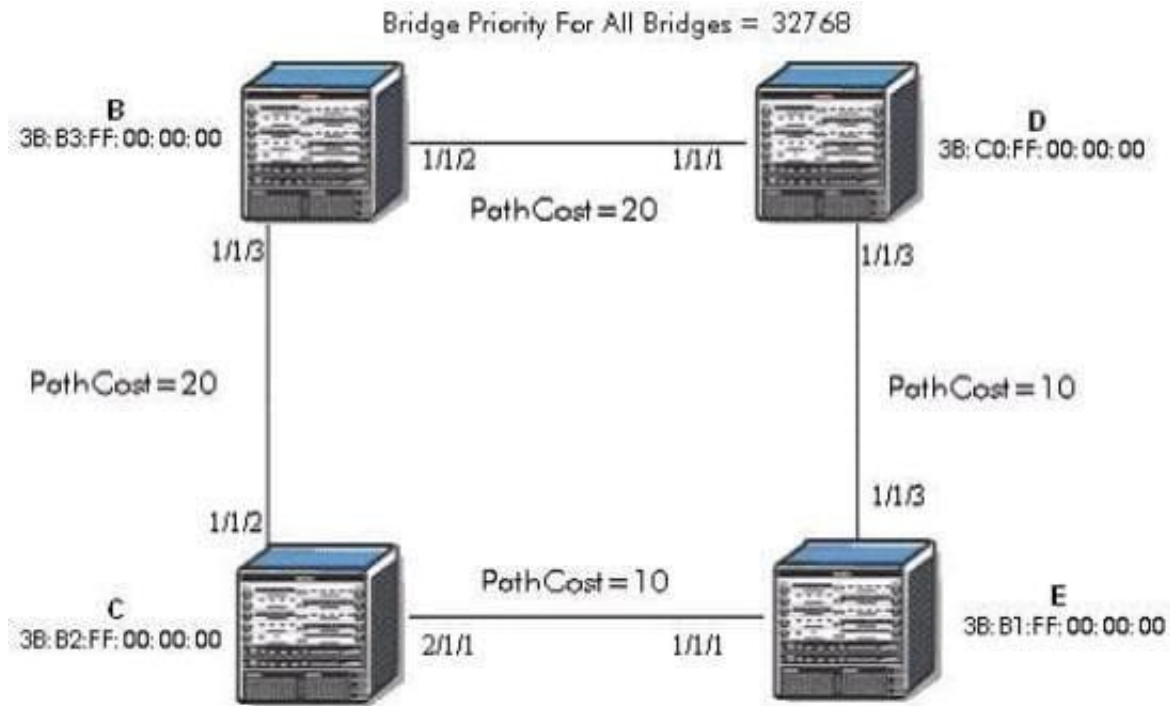
Following Questions and Answers are all new published by Alcatel-Lucent Official Exam Center

- ⚙️ **Instant Download** After Purchase
- ⚙️ **100% Money Back** Guarantee
- ⚙️ **365 Days** Free Update
- ⚙️ **800,000+** Satisfied Customers



QUESTION 1

Click on the exhibit below.



Which ports will become root ports? (Choose 3)

- A. Bridge B 1/1/3
- B. Bridge B 1/1/2
- C. Bridge C 1/1/2
- D. Bridge C 2/1/1
- E. Bridge D 1/1/1
- F. Bridge D 1/1/3
- G. Bridge E 1/1/1
- H. Bridge E 1/1/3

Correct Answer: ADF

QUESTION 2

In the IEEE 802.1 ag, how are merged services detected?

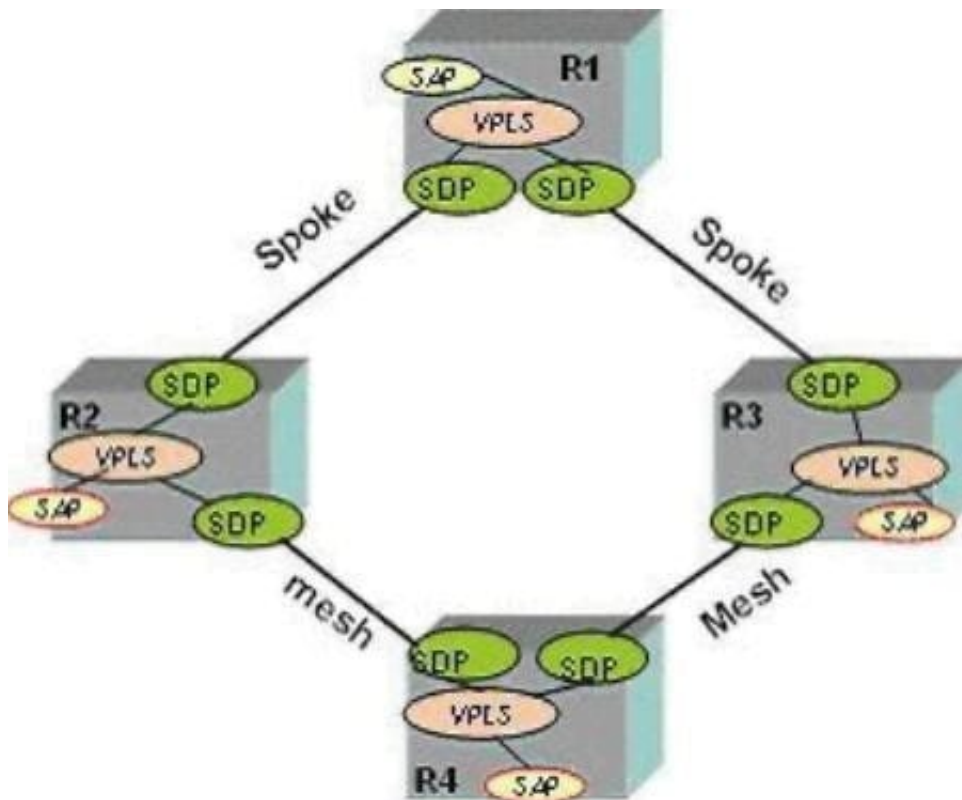
- A. The MEP sees the CFM frame from a different MEG.

- B. The MEP sees a different service-id in the frame sent by a MEP.
- C. The MIP transmits the service-id for each service. The MIP should only see it's own service- id.
- D. This is a function of 802,3ah EFM,

Correct Answer: A

QUESTION 3

Click on the exhibit below.



The VPLS service MTU on R2 is 1514 bytes. What must the service MTU be on all other routers participating in the VPLS?

- A. The service MTU must be equal to or smaller than 1514 bytes.
- B. The service MTU must be 1514 bytes.
- C. The service MTU must be equal to or greater than 1514 bytes.
- D. The service MTU can be any value.

Correct Answer: B

QUESTION 4

Click on the exhibit below.

```
*A:PE1# show service id 1 sdp 4 detail

=====
Service Destination Point (Sdp Id : 4) Details
=====
-----
Sdp Id 4:1  -(4.4.4.4)
-----
SDP Id           : 4:1                Type           : Mesh
VC Type          : Ether              VC Tag         : n/a
Admin Path MTU   : 0                  Oper Path MTU  : 9186
Far End          : 4.4.4.4            Delivery       : MPLS

Admin State      : Up                  Oper State     : Down
Ingress Label    : 131068             Egress Label   : 0

Last Status Change : 10/30/2009 05:15:59  Signaling      : TLDP
Last Mgmt Change  : 10/30/2009 05:13:34  Force Vlan-Vc  : Disabled
Flags            : NoEgrVCLabel
Peer Pw Bits     : None

KeepAlive Information :
Admin State       : Disabled           Oper State     : Disabled
Hello Time       : 10                 Hello Msg Len  : 0
Max Drop Count   : 3                 Hold Down Time : 10

Associated LSP LIST :
Lsp Name         : to-PE4
Admin State      : Up                  Oper State     : Up
Time Since Last Tr* : 05d20h00m
-----
```

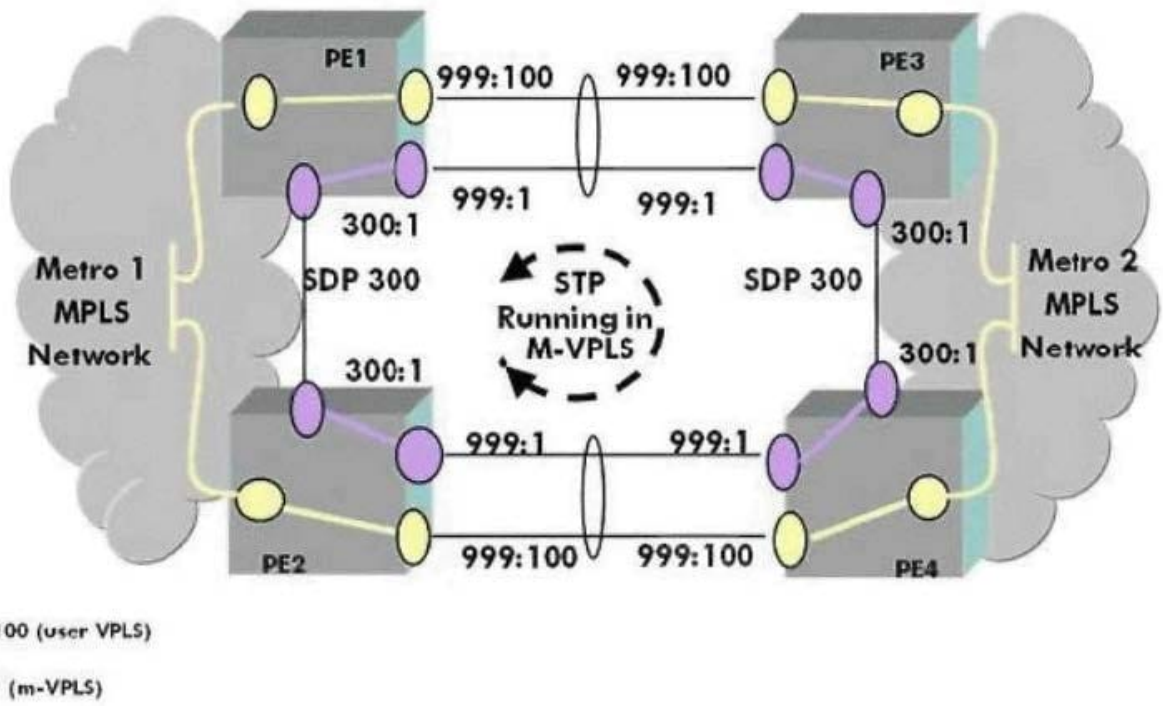
Given the following output what is the most likely reason the SDP binding is operationally down? (Choose 2)

- A. The sdp id is different on the far-end.
- B. LDP is disabled on the far-end.
- C. The vc-id is different on the far-end.
- D. The mesh-sdp is missing on the far-end.
- E. The mesh-sdp is administratively shutdown on PEL
- F. There is an MTU mismatch.

Correct Answer: CD

QUESTION 5

Click on the exhibit below.



Study the diagram shown. What consideration should be given to the transport tunnel of SDP 300?

- A. The SDP must be configured to use GRE encapsulation.
- B. The SDP must follow the same path as the user's SDP.
- C. The SDP should be configured to use an RSVP signaled transport with fast reroute.
- D. The SDP must be the same as the user's SDP.

Correct Answer: C

[Latest 4A0-105 Dumps](#)

[4A0-105 PDF Dumps](#)

[4A0-105 Practice Test](#)