

4A0-105^{Q&As}

Alcatel-Lucent Virtual Private LAN Services

Pass Alcatel-Lucent 4A0-105 Exam with 100% Guarantee

Free Download Real Questions & Answers **PDF** and **VCE** file from:

<https://www.leads4pass.com/4a0-105.html>

100% Passing Guarantee
100% Money Back Assurance

Following Questions and Answers are all new published by Alcatel-Lucent Official Exam Center

-  **Instant Download** After Purchase
-  **100% Money Back** Guarantee
-  **365 Days** Free Update
-  **800,000+** Satisfied Customers



QUESTION 1

What are the benefits of a hierarchical VPLS architecture? (Choose 3)

- A. Increases scalability
- B. Reduces the FDB size within a VPLS instance
- C. Reduces replication and bandwidth utilization from the MDU device to the core network
- D. Easier to manage
- E. Reduces the routing table size

Correct Answer: ACD

QUESTION 2

Which of the following statements regarding unicast and multicast frames is true for a traditional layer 2 switch? (Choose 2)

- A. Multicast frames only forward out ports that have a known receiver.
- B. Unicast frames only forward out ports that have a known receiver.
- C. If the FDB is empty, unicast and multicast frames are treated equally.
- D. If the FDB has an entry for the unicast frame, both unicast and multicast are treated equally.

Correct Answer: BC

QUESTION 3

Click on the exhibit below.

```
A:PE-B# show service id 333 stp
=====
Stp info, Service 333
=====
Bridge Id       : 80:00.00:16:4d:1c:e9:b8   Top. Change Count : 6
Root Bridge    : 80:00.00:03:fa:40:a2:9c   Stp Oper State    : Up
Primary Bridge : This Bridge              Topology Change   : Inactive
Mode           : Rstp                     Last Top. Change  : 0d 00:00:58
Vcp Active Prot. : Rstp
Root Port      : 2048                      External RPC      : 10
=====
Stp port info
=====
Sap/Sdp Id      Oper-  Port-  Port-  Port-  Oper-  Link-  Active
                State Role   State Num   Edge  Type  Prot.
-----
1/1/1           Up     Root   Forward 2048  False Pt-pt Rstp
=====
```

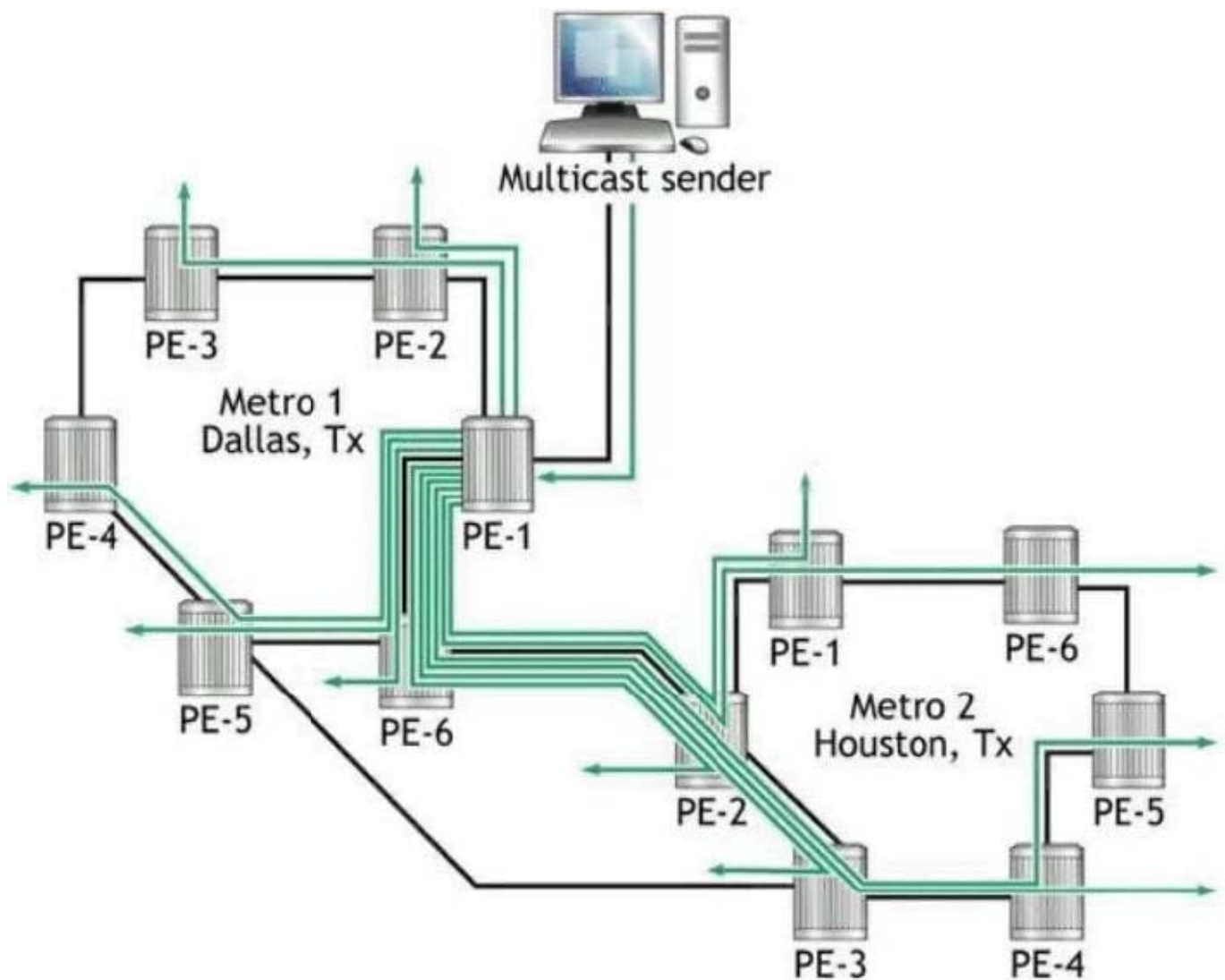
Based on the output below which of the following statements is true?

- A. This Bridge is furthest from the Root Bridge within the VPLS mesh.
- B. This Bridge is the Root Bridge.
- C. SAP 1/1/1 is an Edge Port.
- D. This Bridge is closest to the Root Bridge within the VPLS mesh.

Correct Answer: D

QUESTION 4

Click on the exhibit below.



Assume PE-1 has a mesh-sdp configured to every PE node in both Metro networks. What could be done to prevent the bandwidth replication between Metro 1 and Metro 2?

A. PE-1 must be configured with mesh-SDPs to every node receiving the multicast traffic. There is no way to reduce the replication or bandwidth.

B. PE nodes in Metro 1 could be configured with mesh-SDPs. PE nodes in Metro 2 would be configured with mesh-SDPs. However, the connection between Metro networks (PE-2 to PE-6) can be configured with a spoke-sdp. This would reduce the replication and bandwidth used on the link between Metro networks. This also reduces the replication required by PE-1.

C. PE-1 can be configured with spoke-SDPs to every PE node in both Metro networks. This will reduce the bandwidth and replication within the network.

D. PE nodes in Metro 1 could be configured with spoke-SDPs. PE nodes in Metro 2 would be configured with spoke-SDPs. However, the connection between Metro networks (PE-2 to PE-6) can be configured with a mesh-sdp. This would reduce the replication and bandwidth used on the link between Metro networks. This also reduces the replication required by PE-1.

Correct Answer: B

QUESTION 5

Port 1/1/1 has been configured as an access port with QinQ encapsulation. Which of the following three statements are true for ingress traffic assuming default configuration? (Choose 3)

A. sap 1/1/1:*:0 is a valid sap id.

B. sap 1/1/1:100* will accept frames with a single tag of 100.

C. sap 1/1/1:200* will strip the top tag of 200 and the bottom tag will be transparently passed.

D. sap 1/1/1:0* will accept all untagged frames.

E. sap 1/1/1:0* will accept any tagged frames.

Correct Answer: BCD

[4A0-105 VCE Dumps](#)

[4A0-105 Practice Test](#)

[4A0-105 Study Guide](#)