

## 4A0-105<sup>Q&As</sup>

Alcatel-Lucent Virtual Private LAN Services

### Pass Alcatel-Lucent 4A0-105 Exam with 100% Guarantee

Free Download Real Questions & Answers **PDF** and **VCE** file from:

<https://www.leads4pass.com/4a0-105.html>

100% Passing Guarantee  
100% Money Back Assurance

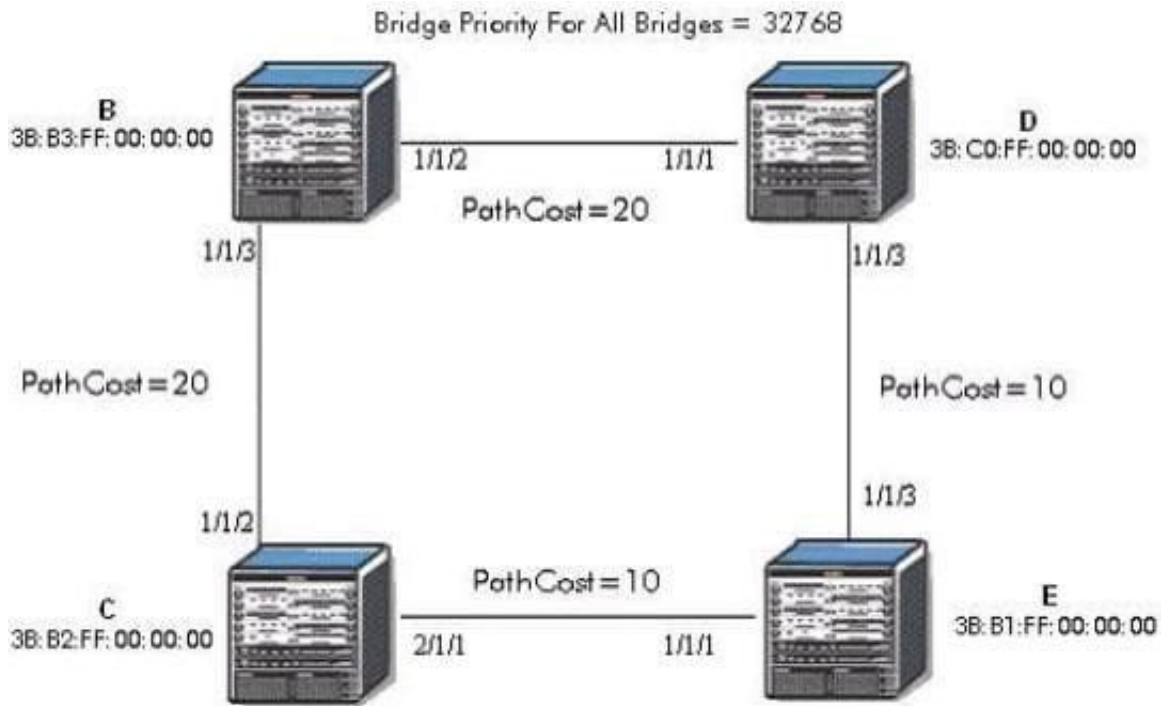
Following Questions and Answers are all new published by Alcatel-Lucent Official Exam Center

- ⚙️ **Instant Download** After Purchase
- ⚙️ **100% Money Back** Guarantee
- ⚙️ **365 Days** Free Update
- ⚙️ **800,000+** Satisfied Customers



**QUESTION 1**

Click on the exhibit below.



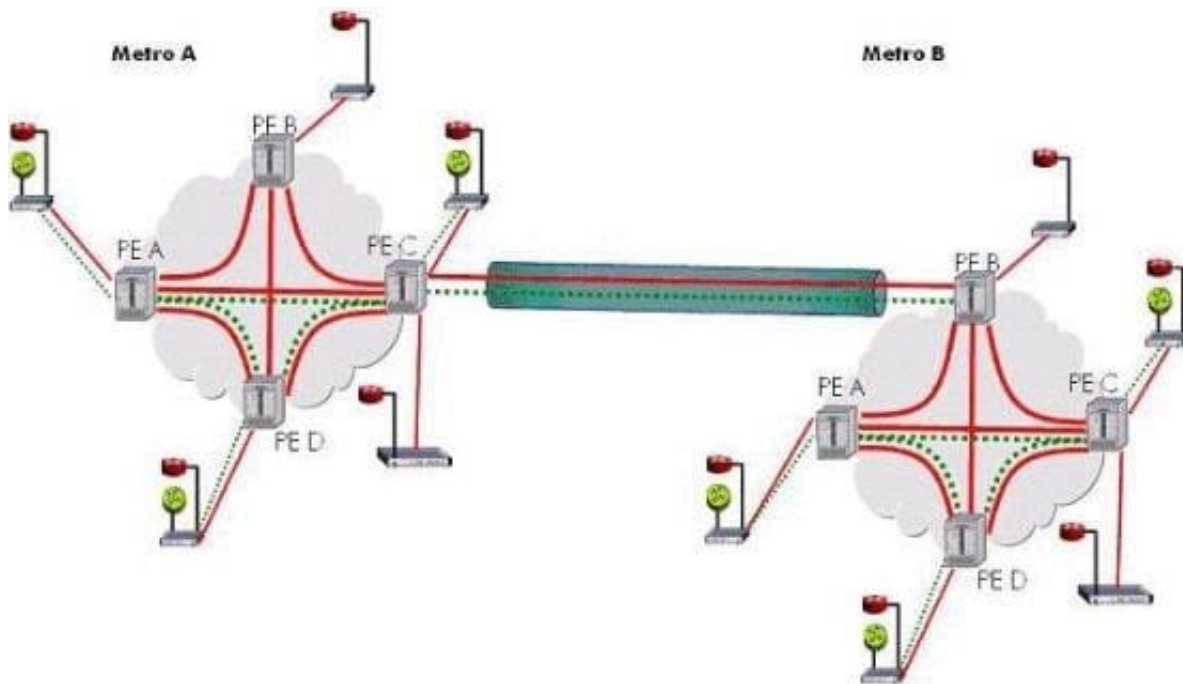
Which port will become the alternate port?

- A. Bridge B 1/1/3
- B. Bridge B 1/1/2
- C. Bridge C 1/1/2
- D. Bridge C 2/1/1
- E. Bridge D 1/1/1
- F. Bridge D 1/1/3
- G. Bridge E 1/1/1
- H. Bridge E 1/1/3

Correct Answer: B

**QUESTION 2**

Click on the exhibit below.



Assuming there is a full mesh of mesh-SDPs between the PEs within each metro network and a spoke-SDP between PE-C of Metro A and PE-B of Metro B. how is traffic forwarded from PE-A in Metro A to PE-D of Metro B? Select the most accurate statement.

- A. An LSP must be configured between PE-A and PE-D for this traffic to be forwarded.
- B. A VPLS FDB lookup is done at PE-A of Metro A only
- C. An SDP must be configured between PE-A of Metro A and PE-D of Metro D for this traffic to be forwarded
- D. A VPLS FDB lookup is done at PE-A and PE-C of Metro A and PE-B of Metro B

Correct Answer: D

**QUESTION 3**

What is the default fdb size for a VPLS service?

- A. 100
- B. 1
- C. 25
- D. 250

Correct Answer: D

## QUESTION 4

Which of the following is a true statement?

- A. The lower the age-time, the greater the amount of flooding
- B. The higher the age-time, the greater the amount of flooding.
- C. The lower the age-time, the lower the amount of flooding.
- D. There is no relationship between the age-time and the amount of flooding.

Correct Answer: A

---

## QUESTION 5

If the command "disable-learning" has been added at the VPLS level, then MAC entries which have already been learned will not be aged.

- A. TRUE
- B. FALSE

Correct Answer: B

[Latest 4A0-105 Dumps](#)

[4A0-105 VCE Dumps](#)

[4A0-105 Braindumps](#)