

4A0-103^{Q&As}

Alcatel-Lucent Multiprotocol Label Switching

Pass Alcatel-Lucent 4A0-103 Exam with 100% Guarantee

Free Download Real Questions & Answers **PDF** and **VCE** file from:

<https://www.leads4pass.com/4a0-103.html>

100% Passing Guarantee
100% Money Back Assurance

Following Questions and Answers are all new published by Alcatel-Lucent Official Exam Center

-  **Instant Download** After Purchase
-  **100% Money Back** Guarantee
-  **365 Days** Free Update
-  **800,000+** Satisfied Customers



QUESTION 1

Which of the following devices can originate an opaque LSA?

- A. TE enabled OSPF routers
- B. Backbone router only
- C. ABR only
- D. ASBR only

Correct Answer: A

QUESTION 2

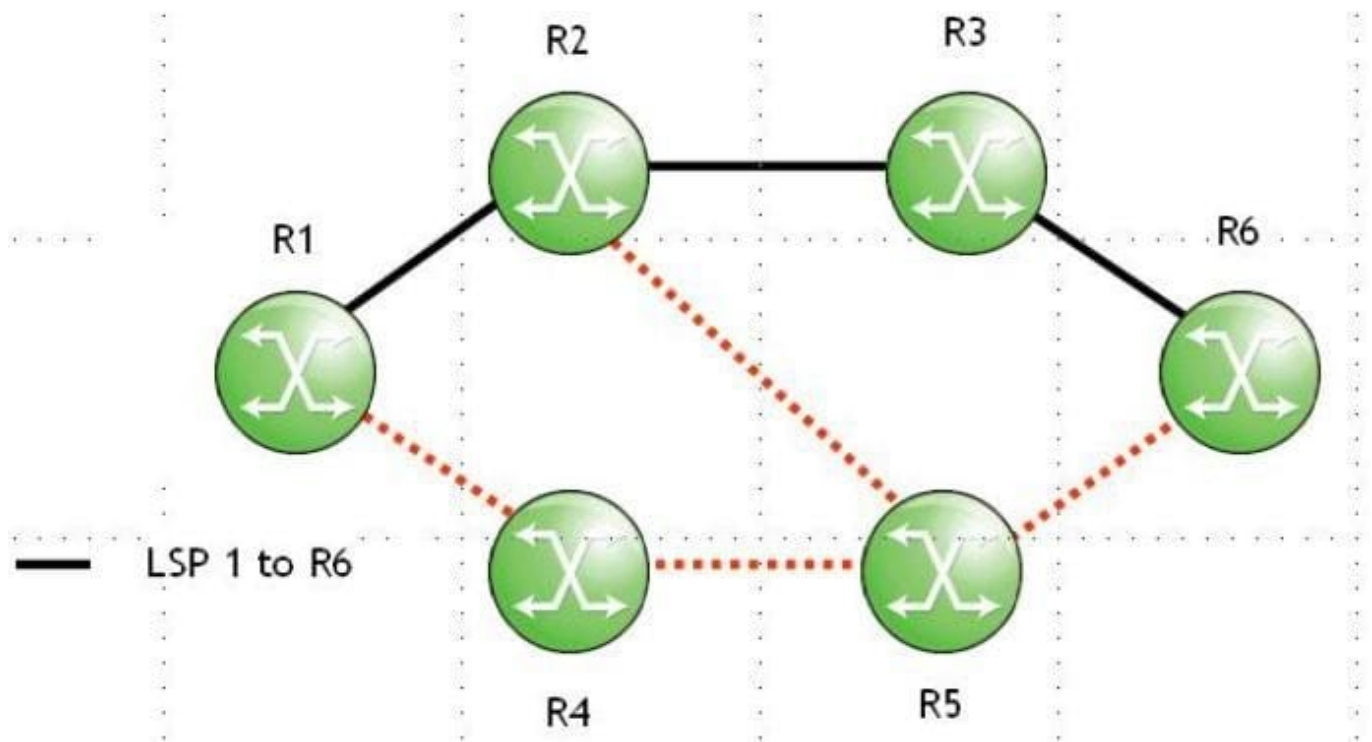
Which of the following about CSPF is TRUE?

- A. The tail-end router performs the CSPF calculation for an LSP.
- B. CSPF calculations are always performed on RSVP-TE based LSPs.
- C. The head-end router performs the CSPF calculation for an LSP.
- D. Each downstream router performs its own CSPF calculation for an LSP.

Correct Answer: C

QUESTION 3

Click on the exhibit.



When router R1 forwards a PATH message to router R2, which of the following about the PATH message's IP header is TRUE?

- A. The options field is set to router alert.
- B. The source address is R1's egress interface address.
- C. The destination address is R2's ingress interface address.
- D. The HOP object includes R2's system address.

Correct Answer: A

QUESTION 4

Which of the following statements regarding LDP-over-RSVP are true? (Choose two)

- A. Targeted sessions must exist between all routers in the tunnel's path.
- B. Each LDP interface must be configured to support LDP tunneling.
- C. LDP prefixes resolve to an RSVP LSP, rather than to a physical egress interface.
- D. RSVP LSPs must exist between each PE-ABR pair, or ABR-ABR pair in each area.

Correct Answer: CD

QUESTION 5

When a device receives a labeled packet, which of the following can occur?

- A. The packet can only be forwarded as an unlabeled packet.
- B. The packet can be forwarded as a labeled or unlabeled packet, depending on the received label value.
- C. The packet can be forwarded as a labeled or unlabeled packet, depending on the destination IP address in the payload
- D. The packet can only be forwarded as a labeled packet.

Correct Answer: B

[4A0-103 Practice Test](#)

[4A0-103 Study Guide](#)

[4A0-103 Exam Questions](#)