

4A0-102^{Q&As}

Alcatel-Lucent Border Gateway Protocol

Pass Alcatel-Lucent 4A0-102 Exam with 100% Guarantee

Free Download Real Questions & Answers **PDF** and **VCE** file from:

<https://www.lead4pass.com/4a0-102.html>

100% Passing Guarantee
100% Money Back Assurance

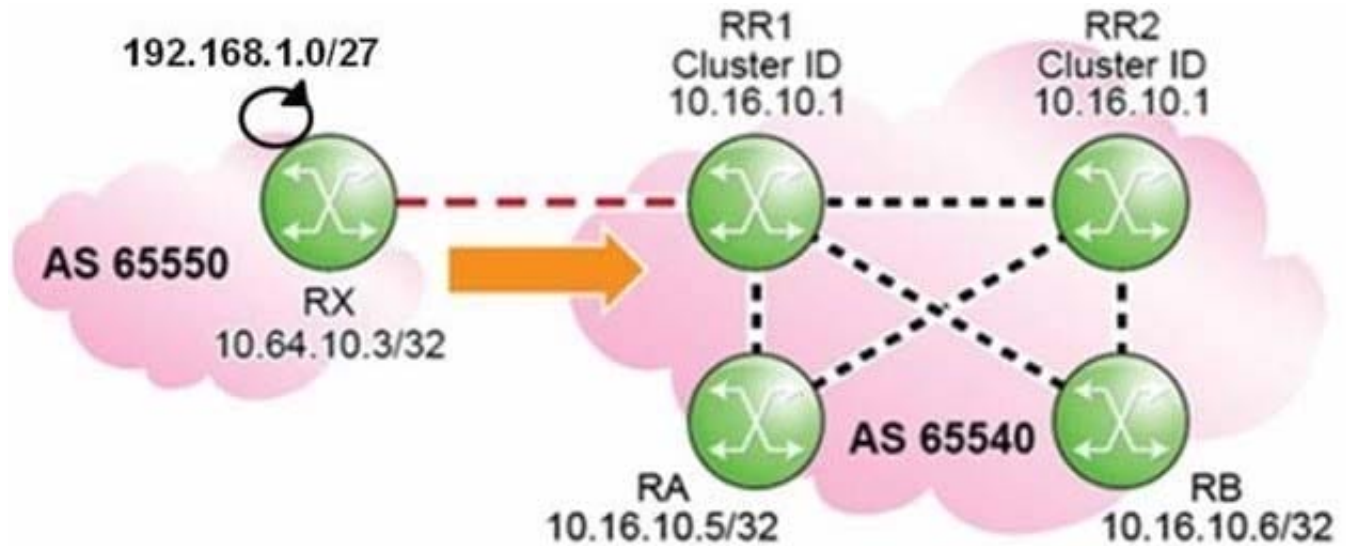
Following Questions and Answers are all new published by Alcatel-Lucent Official Exam Center

-  **Instant Download** After Purchase
-  **100% Money Back** Guarantee
-  **365 Days** Free Update
-  **800,000+** Satisfied Customers



QUESTION 1

Click the exhibit.



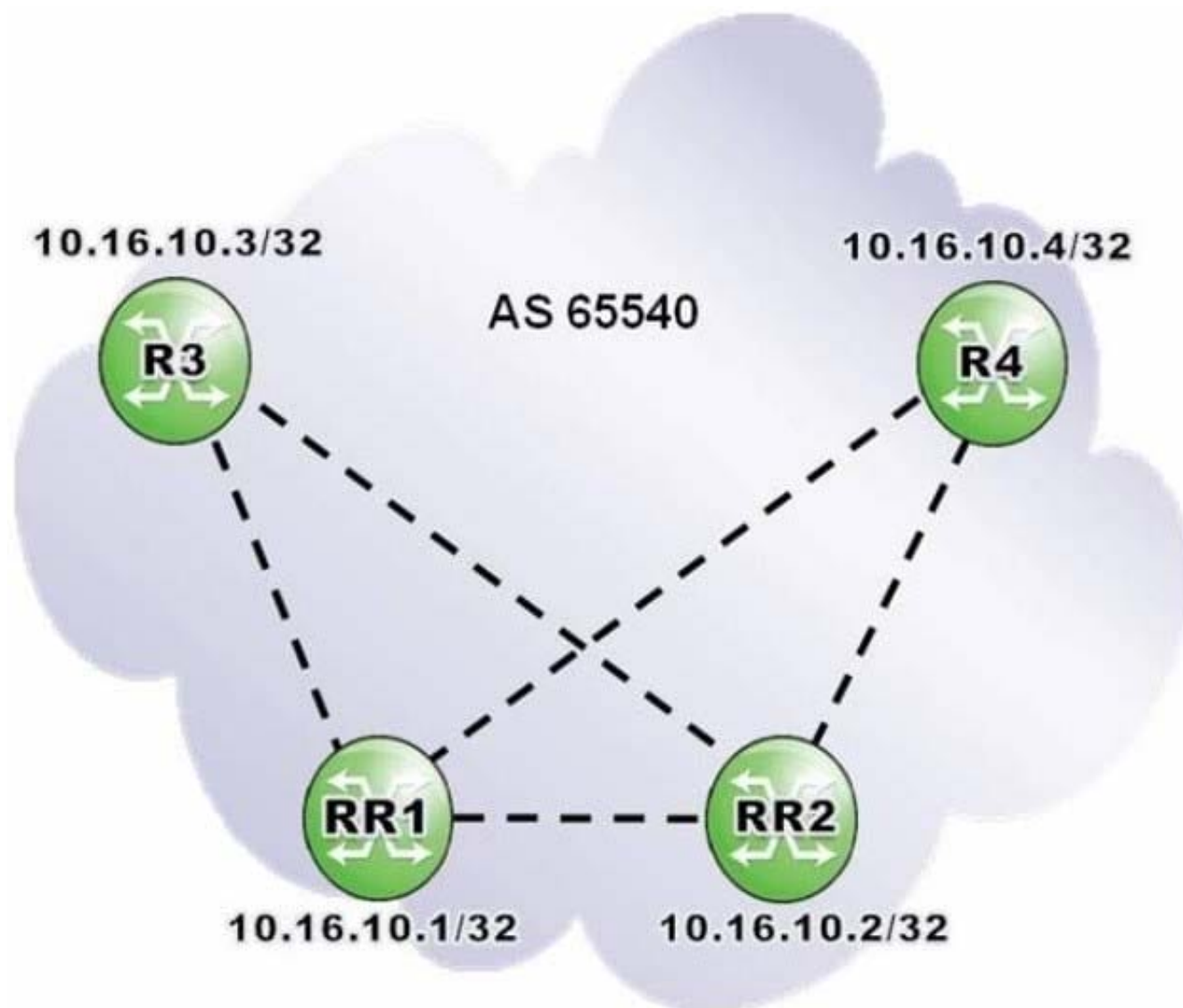
Routers RR1 and RR2 are route reflectors with the same cluster-ID. How many updates for prefix 192.168.1.0/27 are received at router RR1?

- A. 1
- B. 2
- C. 3
- D. 4

Correct Answer: A

QUESTION 2

Click the exhibit.



Routers RR1 and RR2 are redundant route reflectors for clients R3 and R4. Which of the following is a valid configuration on router RR1?

A. RR1>config>router>bgp# info

```
-----
group "AS 65540 iBGP"
  cluster 10.16.10.1
  peer-as 65540
  neighbor 10.16.10.2
exit
neighbor 10.16.10.3
exit
neighbor 10.16.10.4
exit
```

B. RR1>config>router>bgp# info

```
-----
group "AS 65540 iBGP"
  peer-as 65540
  neighbor 10.16.10.2
    cluster 10.16.10.2
  exit
  neighbor 10.16.10.3
    cluster 10.16.10.1
  exit
  neighbor 10.16.10.4
    cluster 10.16.10.1
  exit
exit
```

C. RR1>config>router>bgp# info

```
-----
group "AS 65540 iBGP"
  peer-as 65540
  neighbor 10.16.10.2
  exit
  neighbor 10.16.10.3
    cluster 10.16.10.1
  exit
  neighbor 10.16.10.4
    cluster 10.16.10.1
  exit
exit
```

D. RR1>config>router>bgp# info

```
-----
group "AS 65540 iBGP"
  peer-as 65540
  neighbor 10.16.10.3
    cluster 10.16.10.1
  exit
  neighbor 10.16.10.4
    cluster 10.16.10.1
  exit
exit
```

A. Option A

B. Option B

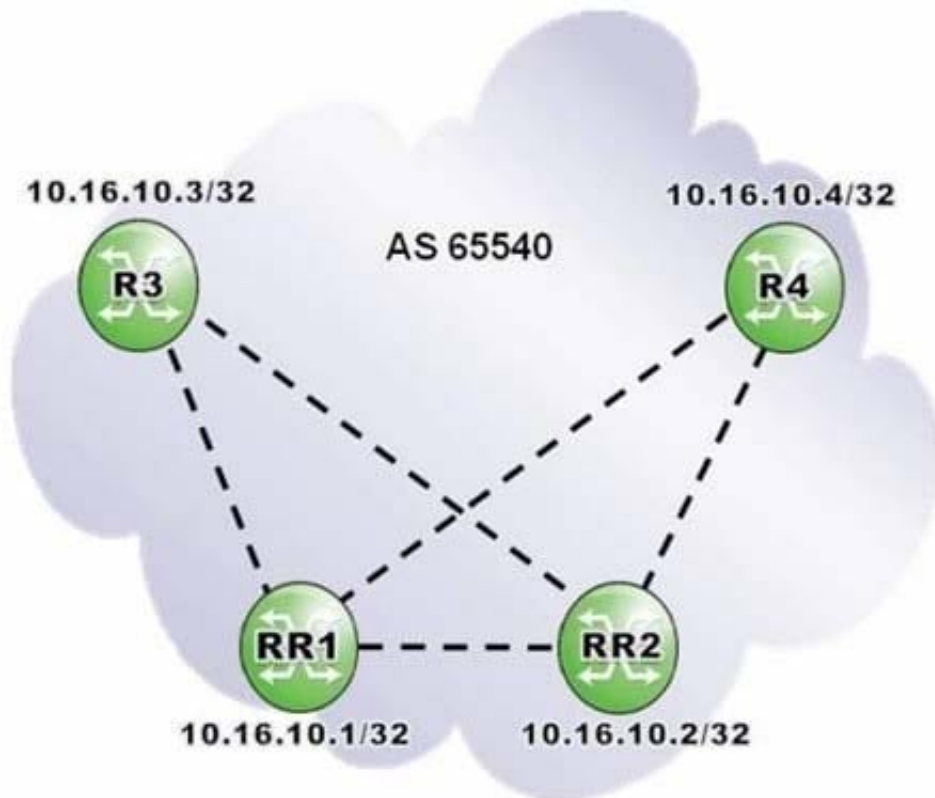
C. Option C

D. Option D

Correct Answer: C

QUESTION 3

Click the exhibit.



Routers RR1 and RR2 are redundant route reflectors for clients R3 and R4. Which of the following is a valid configuration on router R3?

A. RR1>config>router>bgp# info

```
-----
group "AS 65540 iBGP"
  cluster 10.16.10.1
  peer-as 65540
  neighbor 10.16.10.2
  exit
  neighbor 10.16.10.3
  exit
  neighbor 10.16.10.4
  exit
exit
```

B. RR1>config>router>bgp# info

```
-----
group "AS 65540 iBGP"
  peer-as 65540
  neighbor 10.16.10.2
    cluster 10.16.10.2
  exit
  neighbor 10.16.10.3
    cluster 10.16.10.1
  exit
  neighbor 10.16.10.4
    cluster 10.16.10.1
  exit
exit
```

C. RR1>config>router>bgp# info

```
-----
group "AS 65540 iBGP"
  peer-as 65540
  neighbor 10.16.10.2
  exit
  neighbor 10.16.10.3
    cluster 10.16.10.1
  exit
  neighbor 10.16.10.4
    cluster 10.16.10.1
  exit
exit
```

D. RR1>config>router>bgp# info

```
-----
group "AS 65540 iBGP"
  peer-as 65540
  neighbor 10.16.10.3
    cluster 10.16.10.1
  exit
  neighbor 10.16.10.4
    cluster 10.16.10.1
  exit
exit
```

A. Option A

B. Option B

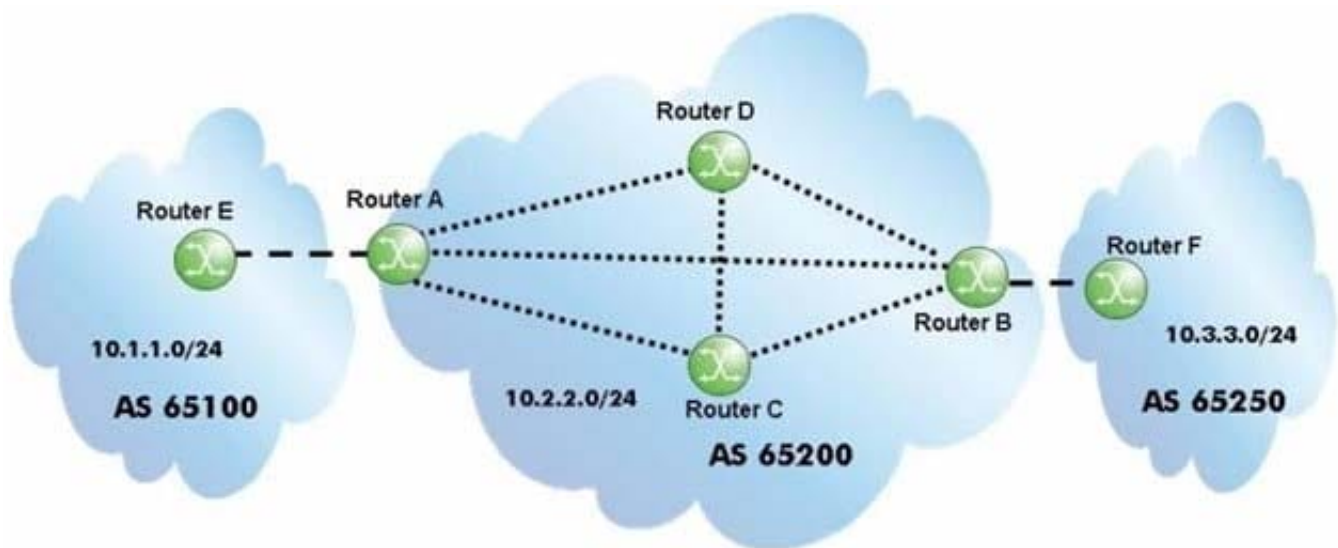
C. Option C

D. Option D

Correct Answer: C

QUESTION 4

Click the exhibit.



After router A receives the BGP update for the 10.3.3.0/24 prefix, which routers will the route be propagated to?

A. All routers with which it has a BGP session.

B. All routers with which it has a BGP session, except the router it received the update from, which is router B.

C. All routers with which it has a BGP session, except the router it received the update from, which is router C.

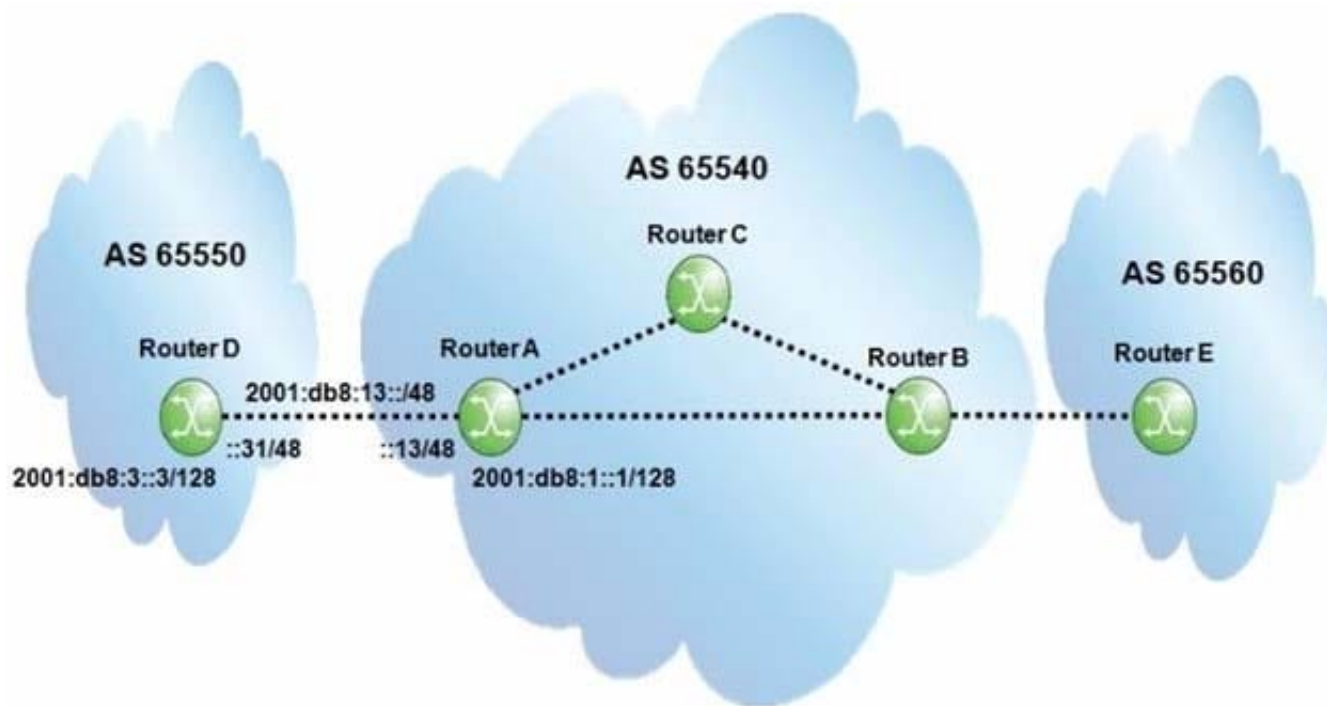
D. All routers with which it has a BGP session, except the router it received the update from, which is router D.

E. Only eBGP neighbors.

Correct Answer: E

QUESTION 5

Click the exhibit.



Assume all router-IDs are properly configured. Which of the following configurations is required on the Alcatel-Lucent 7750 SR router A to establish an IPv6 BGP session to router D?

- A.

```
group "IPv6_eBGP"  
  family ipv6  
  type external  
  peer-as 65550  
  neighbor 2001:DB8:3::3  
  exit  
exit
```
- B.

```
group "IPv6_eBGP"  
  type external  
  peer-as 65550  
  neighbor 2001:DB8:3::3  
  exit  
exit
```
- C.

```
group "IPv6_eBGP"  
  family ipv6  
  peer-as 65550  
  neighbor 2001:DB8:13::31  
  exit  
exit
```
- D.

```
group "IPv6_eBGP"  
  type external  
  peer-as 65550  
  neighbor 2001:DB8:13::31  
  exit  
exit
```

A. Option A

B. Option B

C. Option C

D. Option D

Correct Answer: C