

## 400-007<sup>Q&As</sup>

Cisco Certified Design Expert (CCDE Written)

### Pass Cisco 400-007 Exam with 100% Guarantee

Free Download Real Questions & Answers **PDF** and **VCE** file from:

<https://www.leads4pass.com/400-007.html>

100% Passing Guarantee  
100% Money Back Assurance

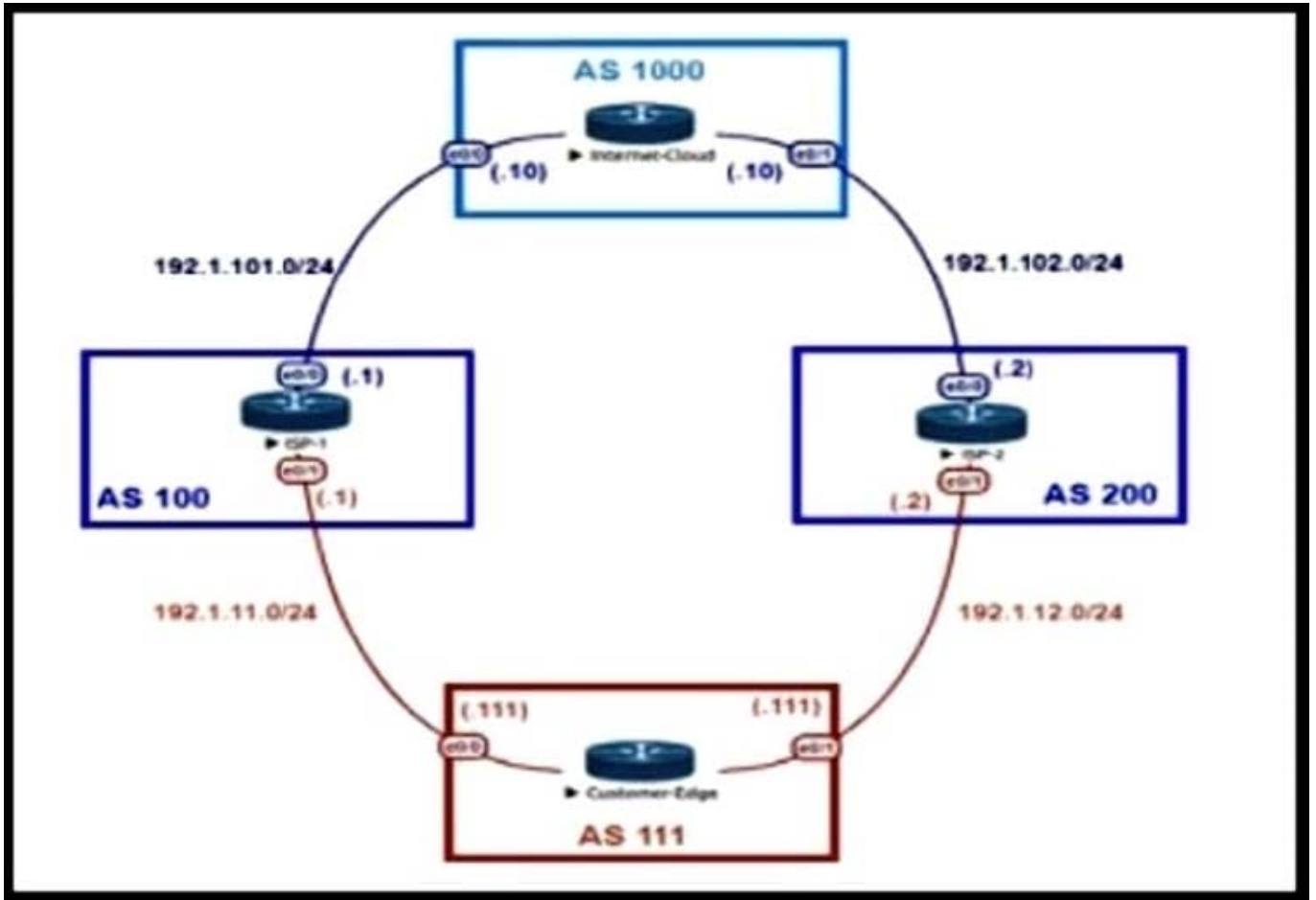
Following Questions and Answers are all new published by Cisco  
Official Exam Center

-  **Instant Download** After Purchase
-  **100% Money Back** Guarantee
-  **365 Days** Free Update
-  **800,000+** Satisfied Customers



**QUESTION 1**

Refer to the exhibit.



An engineer is designing the traffic flow for AS 111. Traffic from AS 111 should be preferred via AS 100 for all external routes. A method must be used that only affects AS 111. Which BGP attributes are best suited to control outbound traffic?

- A. community
- B. MED
- C. local preference
- D. As path

Correct Answer: C

**QUESTION 2**

An enterprise requires MPLS connected branches to access cloud-based Microsoft 365 services over an SD-WAN solution. Internet access is available only at dual regional hub sites that are connected to the MPLS network. Which

connectivity method provides an optimum access method to the cloud-based services If one ISP suffers loss or latency?

- A. Cloud onRamp gateway site
- B. Cloud onRamp SWG
- C. Cloud onRamp
- D. Cloud onRamp SaaS

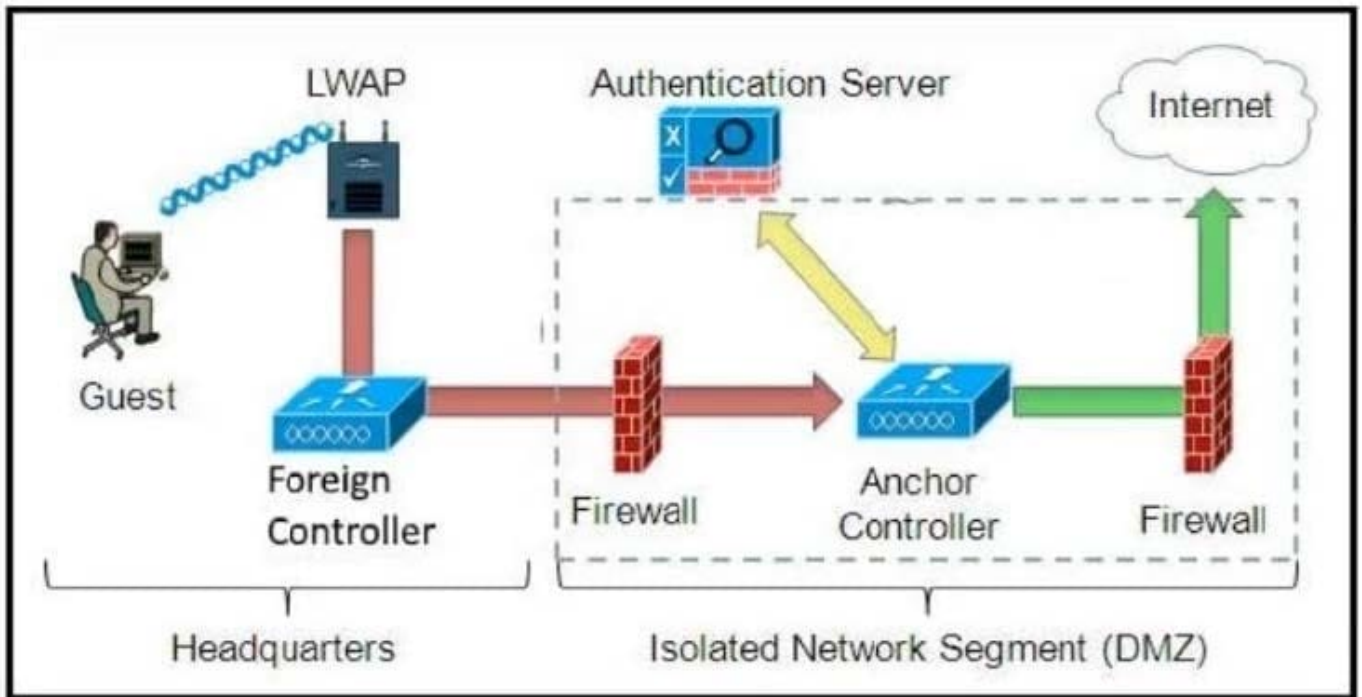
Correct Answer: D

Cloud OnRamp gateway site is only one of a few method to optimise SAAS connectivity within a SDWAN implementation. the overarching solution is '\\Cloud OnRmap SAAS\\'. with the options provided D is the most accurate answer

<https://www.cisco.com/c/en/us/td/docs/routers/sdwan/configuration/cloudonramp/vedge-20-x/cloud-onramp-book-vedge/cor-saas.html#common-scenarios-cor-saas-b>

**QUESTION 3**

Refer to the diagram.



Which solution must be used to send traffic from the foreign wireless LAN controller to the anchor wireless LAN controller?

- A. Send packets from the foreign controller to the anchor controller via Layer 3 MPLS VPN or VRF-Lite
- B. Send packets without encapsulation to the anchor controller over the routed network.
- C. Encapsulate packets into an EoIP tunnel and send them to the anchor controller.

D. Send packets from the foreign controller to the anchor controller via IPinIP or IPsec tunnel.

Correct Answer: C

---

#### QUESTION 4

SD-WAN can be used to provide secure connectivity to remote offices, branch offices, campus networks, data centers, and the cloud over any type of IP-based underlay transport network. Which two statements describe SD WAN solutions? (Choose two.)

- A. SD-WAN networks are inherently protected against slow performance.
- B. Control and data forwarding planes are kept separate.
- C. Improved operational efficiencies result in cost savings.
- D. Solutions include centralized orchestration, control, and zero-touch provisioning.
- E. Solutions allow for variations of commodity and specialized switching hardware.

Correct Answer: BD

Reference: <https://techacad.net/what-is-sd-wan-software-defined-wide-area-network/>

---

#### QUESTION 5

Which three items do you recommend for control plane hardening of an infrastructure device? (Choose three.)

- A. redundant AAA servers
- B. Control Plane Policing
- C. warning banners
- D. to enable unused .services
- E. SNMPv3
- F. routing protocol authentication

Correct Answer: BEF

[Latest 400-007 Dumps](#)

[400-007 Study Guide](#)

[400-007 Exam Questions](#)