

400-007^{Q&As}

Cisco Certified Design Expert (CCDE Written)

Pass Cisco 400-007 Exam with 100% Guarantee

Free Download Real Questions & Answers **PDF** and **VCE** file from:

<https://www.leads4pass.com/400-007.html>

100% Passing Guarantee
100% Money Back Assurance

Following Questions and Answers are all new published by Cisco
Official Exam Center

-  **Instant Download** After Purchase
-  **100% Money Back** Guarantee
-  **365 Days** Free Update
-  **800,000+** Satisfied Customers



QUESTION 1

A customer has a functional requirement that states HR systems within a data center should be segmented from other systems that reside in the same data center and same VLAN. The systems run legacy applications by using hard-coded IP addresses. Which segmentation method is suitable and scalable for the customer?

- A. data center perimeter firewalling
- B. VACLs on data center switches
- C. transparent firewalling
- D. routed firewalls

Correct Answer: B

VLAN (Virtual LAN) is a concept in which we divide the broadcast domain into smaller broadcast domains logically at layer 2. If we create different VLANs then by default, a host from one VLAN can communicate with all the hosts residing in the same VLAN. If we want some hosts not able to reach other hosts within the same VLAN, then the concept of VLAN Access-list or Private VLAN can be used.

QUESTION 2

Company XYZ has two routing domains in their network, EIGRP and OSPF. The company wants to provide full reachability between the two domains by implementing redistribution on a router running both protocols. They need to design the redistribution in a way that the OSPF routers will see link costs added to external routes. How must the redistribution strategy be designed for this network?

- A. Redistribute using metric type 2 into OSPF.
- B. Redistribute using metric type 1 into OSPF.
- C. Redistribute using metric type 1 into EIGRP.
- D. Redistribute using metric type 2 into EIGRP.

Correct Answer: B

<https://www.ciscopress.com/articles/article.asp?p=27573andseqNum=4#:~:text=Routes%20a re%20redistributed%20in%20OSPF,shown%20in%20Figure%2014%2D2.>

QUESTION 3

An enterprise has identified these causes for inefficient CAPEX spending:

CAPEX planning is driven by technology and not by business objectives. The CAPEX planning team lacks the data it needs to perform due diligence tasks. The organizational structure lacks sufficient accountability and incentives.

Which corporate cultural change contributes to improving the effectiveness of CAPEX spending?

- A. Build a financial control function that delivers high-quality reports on operational expenses for business insight and

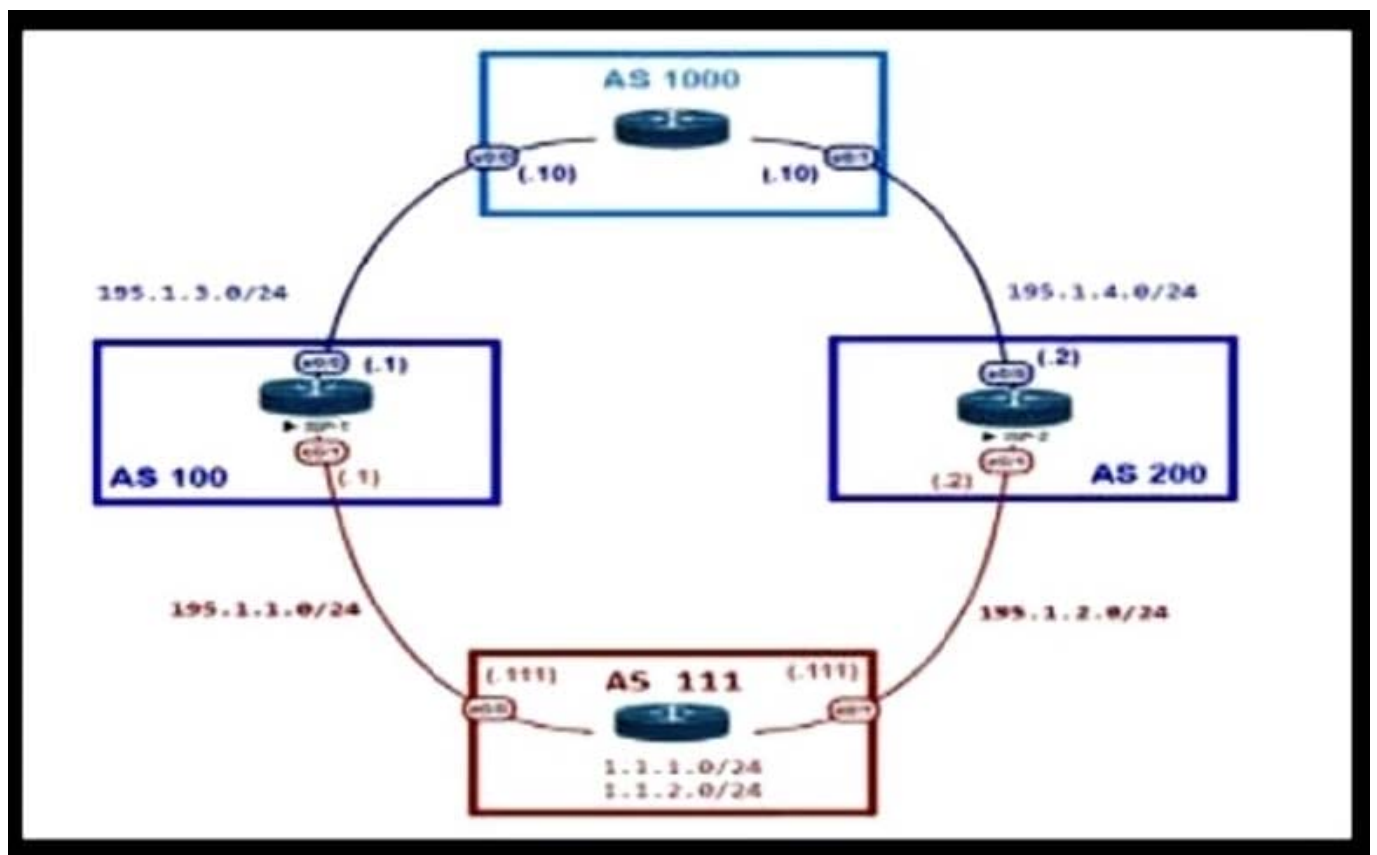
financial reporting.

- B. CxO-level staff must have a full technical understanding but they should not trust their technical leaders fully.
- C. Adopt new organizational models that promote real accountability for ROI, not just revenue, EBITDA, and cash.
- D. Marketing and product management divisions must reduce their CAPEX budgets significantly to drive the change.

Correct Answer: C

QUESTION 4

Refer to the exhibit.



An engineer is designing the network for a multihomed customer running in AS 111 does not have any other ASs connected to it. Which technology is more comprehensive to use in the design to make sure that the AS is not being used as a transit AS?

- A. Configure the AS-set attribute to allow only routes from AS 111 to be propagated to the neighbor ASs.
- B. Use the local preference attribute to configure your AS as a non-transit AS.
- C. include an AS path access list to send routes to the neighboring ASs that only have AS 111 in the AS path field.
- D. Include a prefix list to only receive routes from neighboring ASs.

Correct Answer: C

QUESTION 5

What is a description of a control plane action?

- A. de-encapsulating and re-encapsulating a packet in a data-link frame
- B. matching the destination MAC address of an Ethernet frame to the MAC address table
- C. matching the destination IP address of an IP packet to the IP routing table
- D. hosts locating routers that reside on attached links using the IPv6 Neighbor Discover Protocol

Correct Answer: D

The neighbor discovery process is that part of the control plane that implements the Neighbor Discovery Protocol.

Bottom of page 40: <https://www.juniper.net/documentation/us/en/software/junos/neighbor-discovery/neighbor-discovery.pdf>

[400-007 Practice Test](#)

[400-007 Study Guide](#)

[400-007 Braindumps](#)