

352-001^{Q&As}

CCDE Written Exam

Pass Cisco 352-001 Exam with 100% Guarantee

Free Download Real Questions & Answers **PDF** and **VCE** file from:

<https://www.leads4pass.com/352-001.html>

100% Passing Guarantee
100% Money Back Assurance

Following Questions and Answers are all new published by Cisco
Official Exam Center

-  **Instant Download** After Purchase
-  **100% Money Back** Guarantee
-  **365 Days** Free Update
-  **800,000+** Satisfied Customers



QUESTION 1

You must measure the amount of traffic that a mobile packet gateway produces when mobile phones access the service provider's internal applications, rather than the Internet. Backbone queuing can be properly designed as a result of this analysis. This traffic is in the multiple Gigabits per second order of magnitude.

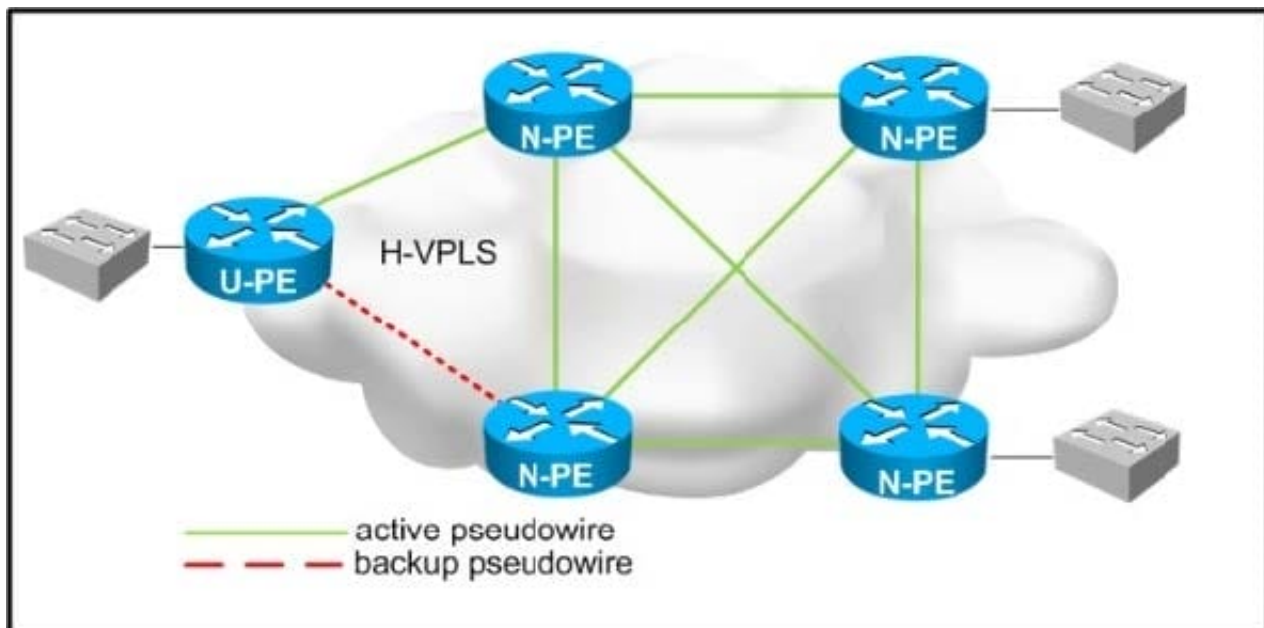
Which three actions can you take to allow this visibility? (Choose three.)

- A. Poll OID that is configured for internal servers with SNMP.
- B. Collect traffic information that is related to internal server IP addresses with NetFlow.
- C. Measure traffic characteristics of known internal servers with IP SLA.
- D. Collect information about traffic to the service provider marked with IP precedence with NetFlow.
- E. Analyze traffic volumes with deep packet inspection.

Correct Answer: BDE

QUESTION 2

Refer to the exhibit.



You are designing a loop-free hierarchical VPLS service. Which two design considerations should be implemented for the pseudowires between the N-PE and U-PE routers? (Choose two.)

- A. Disable split horizon toward the N-PE routers.
- B. Disable split horizon toward the U-PE router.
- C. Enable split horizon toward the U-PE router.

- D. Enable split horizon toward the N-PE routers.
- E. Disable MAC learning on the U-PE route.
- F. Disable MAC learning on the N-PE routers.

Correct Answer: BD

QUESTION 3

To meet specific business requirements, QoS-marked traffic must be sent over a dedicated link.

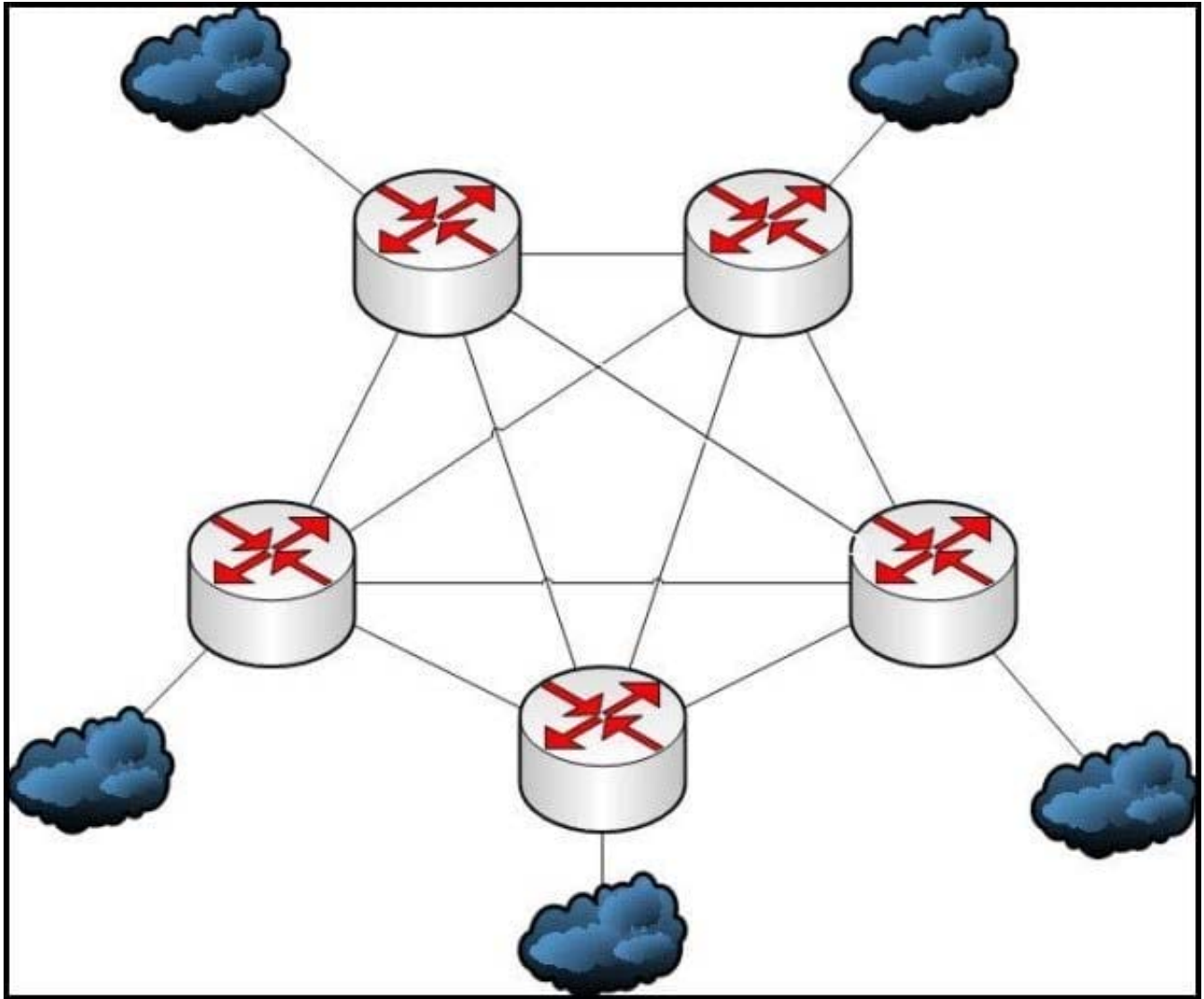
Which technology fulfills this requirement?

- A. MPLS
- B. Q-in-Q tunneling
- C. policy-based routing
- D. EIGRP with modified metrics

Correct Answer: C

QUESTION 4

Refer to the exhibit.



A service provider using IS-IS has designed this network with all core links at the Layer 2 control plane. How will they adjust the design to reduce the flooding of update packets?

- A. Change the area type of the links to be level-1-2 to allow level-1 updates.
- B. Change the network type of the links from broadcast to point-to-point.
- C. Use IS-IS mesh groups.
- D. Configure SPF timers to be more aggressive so that updates are more quickly cleared from the queue.

Correct Answer: C

QUESTION 5

A company plans to use BFD between its routers to detect a connectivity problem inside the switched network. An IPS is transparently installed between the switches. Which packets should the IPS forward for BFD to work under all

circumstances?

- A. IP packets with broadcast IP source addresses
- B. IP packets with identical source and destination IP addresses
- C. fragmented packets with the do-not-fragment bit set
- D. IP packets with the multicast IP source address
- E. IP packets with the multicast IP destination address
- F. IP packets with the destination IP address 0.0.0.0

Correct Answer: B

[Latest 352-001 Dumps](#)

[352-001 Practice Test](#)

[352-001 Exam Questions](#)