

## 350-501 Q&As

Implementing and Operating Cisco Service Provider Network Core Technologies (SPCOR)

**Pass Cisco 350-501 Exam with 100% Guarantee**

Free Download Real Questions & Answers **PDF** and **VCE** file from:

<https://www.leads4pass.com/350-501.html>

100% Passing Guarantee  
100% Money Back Assurance

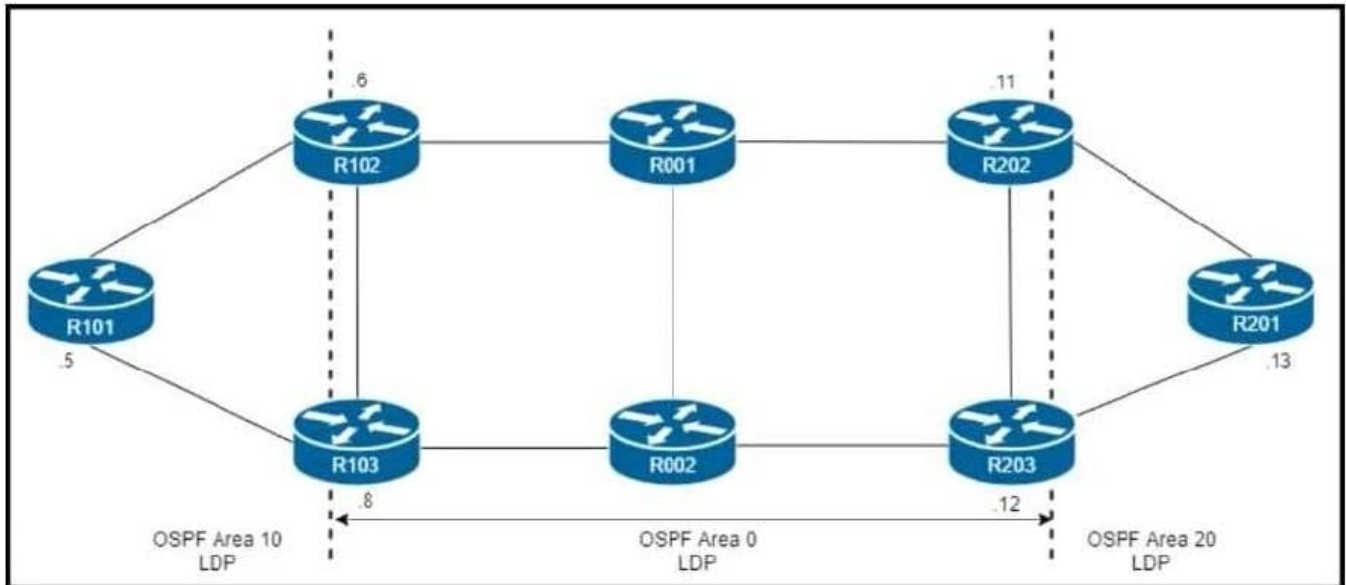
Following Questions and Answers are all new published by Cisco  
Official Exam Center

- ⚙️ **Instant Download** After Purchase
- ⚙️ **100% Money Back** Guarantee
- ⚙️ **365 Days** Free Update
- ⚙️ **800,000+** Satisfied Customers



**QUESTION 1**

Refer to the exhibit.



R101 is peering with R102 and R103, and R201 is peering with R202 and R203 using iBGP Labeled Unicast address families. The OSPF area 0 border routers are in a full iBGP Labeled Unicast mesh, and VPNv4 routes are exchanged directly between PE routers R101 and R201 through iBGP

Which address family-level configuration must be applied on ABR R102 on ABR R102 to support a Unified MPLS routing architecture with partitioned IGP domains?

- A. **router bgp 65512**  
**address-family ipv4**  
**neighbor 172.16.0.5 route-reflector-client**  
**neighbor 172.16.0.5 send-label**  
**neighbor 172.16.0.11 route-reflector-client**  
**neighbor 172.16.0.11 send-label**  
**neighbor 172.16.0.12 route-reflector-client**
- B. **router bgp 65512**  
**address-family ipv4**  
**neighbor 172.16.0.5 route-reflector-client**  
**neighbor 172.16.0.5 next-hop-self all**  
**neighbor 172.16.0.5 send-label**  
**neighbor 172.16.0.11 next-hop-self all**  
**neighbor 172.16.0.11 send-label**  
**neighbor 172.16.0.12 next-hop-self all**  
**neighbor 172.16.0.12 send-label**
- C. **router bgp 65512**  
**address-family ipv4**  
**neighbor 172.16.0.5 route-reflector-client**  
**neighbor 172.16.0.5 next-hop-self all**  
**neighbor 172.16.0.11 next-hop-self all**  
**neighbor 172.16.0.12 next-hop-self all**
- D. **router bgp 65512**  
**address-family ipv4**  
**neighbor 172.16.0.5 route-reflector-client**  
**neighbor 172.16.0.5 next-hop-self**  
**neighbor 172.16.0.5 send-label**  
**neighbor 172.16.0.11 next-hop-self**  
**neighbor 172.16.0.11 send-label**  
**neighbor 172.16.0.12 next-hop-self**  
**neighbor 172.16.0.12 send-label**

A. Option A

B. Option B

C. Option C

D. Option D

Correct Answer: B

---

## QUESTION 2

What do Chef and Puppet have in common?

- A. use Ruby
- B. require modules to be created from scratch
- C. use a master server
- D. manage agents referred to as minions

Correct Answer: C

---

### QUESTION 3

The NOC team must update the BGP forwarding configuration on the network with these requirements:

1.  
BGP peers must establish a neighborhood with NSF capability and restart the session for the capability to be exchanged after 120 seconds.
2.  
BGP peers must delete routes after 360 seconds of inactivity. Which action meets these requirements?
  - A. Set the BGP restart-time to 120 seconds and the BGP ha-mode sso to 360 seconds.
  - B. Set the stalepath-time to 120 seconds and the BGP restart-time to 360 seconds.
  - C. Set the BGP ha-mode sso to 120 seconds and the BGP restart-time to 360 seconds.
  - D. Set the BGP restart-time to 120 seconds and the stalepath-time to 360 seconds.

Correct Answer: D

---

### QUESTION 4

Refer to me exhibit.

```
CSR1#show flowspec ipv4 detail
AFI: IPv4
Flow      :Dest:10.6.5.0/24,DPort:=80|=443
Actions   :Traffic-rate: 0 bps (bgp.1)
Statistics (packets/bytes)
Matched   :           12/696
Dropped   :           12/696
```

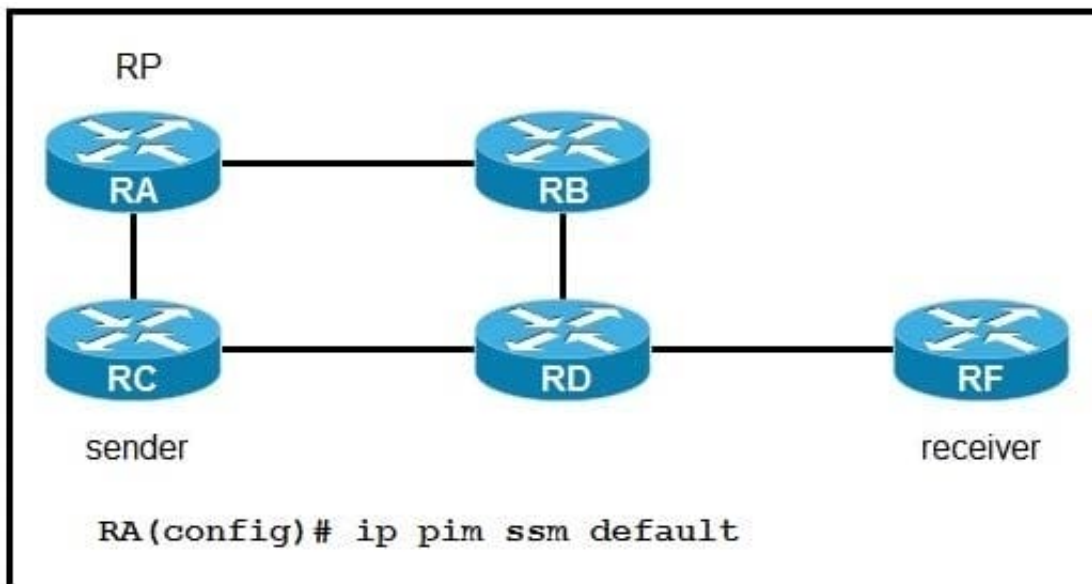
A network operator recently configured BGP FlowSpec for me internal IT network What will be inferred from the configuration deployed on me network?

- A. The policy is configured locally on CSRI and drops all traffic for TCP ports 80 and 443
- B. The policy is learned via BGP FlowSpec and drops all traffic for TCP ports 80 and 443
- C. The policy is warned via BC FlowSpec aid has active traffic
- D. The policy is configured locally on CSR1 and currently has no active traffic

Correct Answer: A

### QUESTION 5

Refer to the exhibit.



If router RA is configured as shown, which IPv4 multicast address space does it use?

- A. 224.0.0.0/8
- B. 225.0.0.0/8
- C. 232.0.0.0/8
- D. 239.0.0.0/8

Correct Answer: C

Reference: [https://www.cisco.com/c/en/us/td/docs/switches/lan/catalyst3850/software/release/3se/multicast/configuration\\_guide/b\\_mc\\_3se\\_3850\\_cg/b\\_mc\\_3se\\_3850\\_cg\\_chapter\\_01011.html](https://www.cisco.com/c/en/us/td/docs/switches/lan/catalyst3850/software/release/3se/multicast/configuration_guide/b_mc_3se_3850_cg/b_mc_3se_3850_cg_chapter_01011.html)