

350-501 Q&As

Implementing and Operating Cisco Service Provider Network Core Technologies (SPCOR)

Pass Cisco 350-501 Exam with 100% Guarantee

Free Download Real Questions & Answers **PDF** and **VCE** file from:

<https://www.leads4pass.com/350-501.html>

100% Passing Guarantee
100% Money Back Assurance

Following Questions and Answers are all new published by Cisco
Official Exam Center

- ⚙️ **Instant Download** After Purchase
- ⚙️ **100% Money Back** Guarantee
- ⚙️ **365 Days** Free Update
- ⚙️ **800,000+** Satisfied Customers



QUESTION 1

Refer to the exhibit.

```
Router(config)# ip access-list standard Suppressed
Router(config-std-nacl)# permit 10.16.6.0 0.0.0.255
Router(config)# route-map SuppressMap
Router(config-route-map)# match ip address Suppressed
```

An engineer is implementing BGP selective prefix suppression. The router must advertise only 10.16.4.0/24, 10.16.5.0/24, and summarized route 10.16.0.0/21, and suppress 10.16.6.0/24. Which configuration must the engineer apply to the router?

- A. Router (config)# router bgp 300 Router(config-router)# aggregate-address 10.16.6.0 255.255.252.0 as-set suppress-map SuppressMap
- B. Router (config)# router bgp 300 Router(config-router)# aggregate-address 10.16.0.0 255.255.255.0 as-set suppress-map unSuppressMap
- C. Router (config)# router bgp 300 Router(config-router)# aggregate-address 10.16.0.0 255.255.248.0 as-set suppress-map SuppressMap
- D. Router (config)# router bgp 300 Router(config-router)# aggregate-address 10.16.6.0 255.255.255.0 as-set suppress-map SuppressMap

Correct Answer: C

QUESTION 2

Refer to the exhibit.

```
PE-A#config t
PE-A(config)#interface FastEthernet0/0
PE-A(config-if)#ip ospf message-digest-key 1 md5 44578611
PE-A(config-if)#ip ospf authentication message-digest

PE-B#config t
PE-B(config)#interface FastEthernet0/0
```

An engineer wants to authenticate the OSPF neighbor between PE-A and PE-B using MD5.

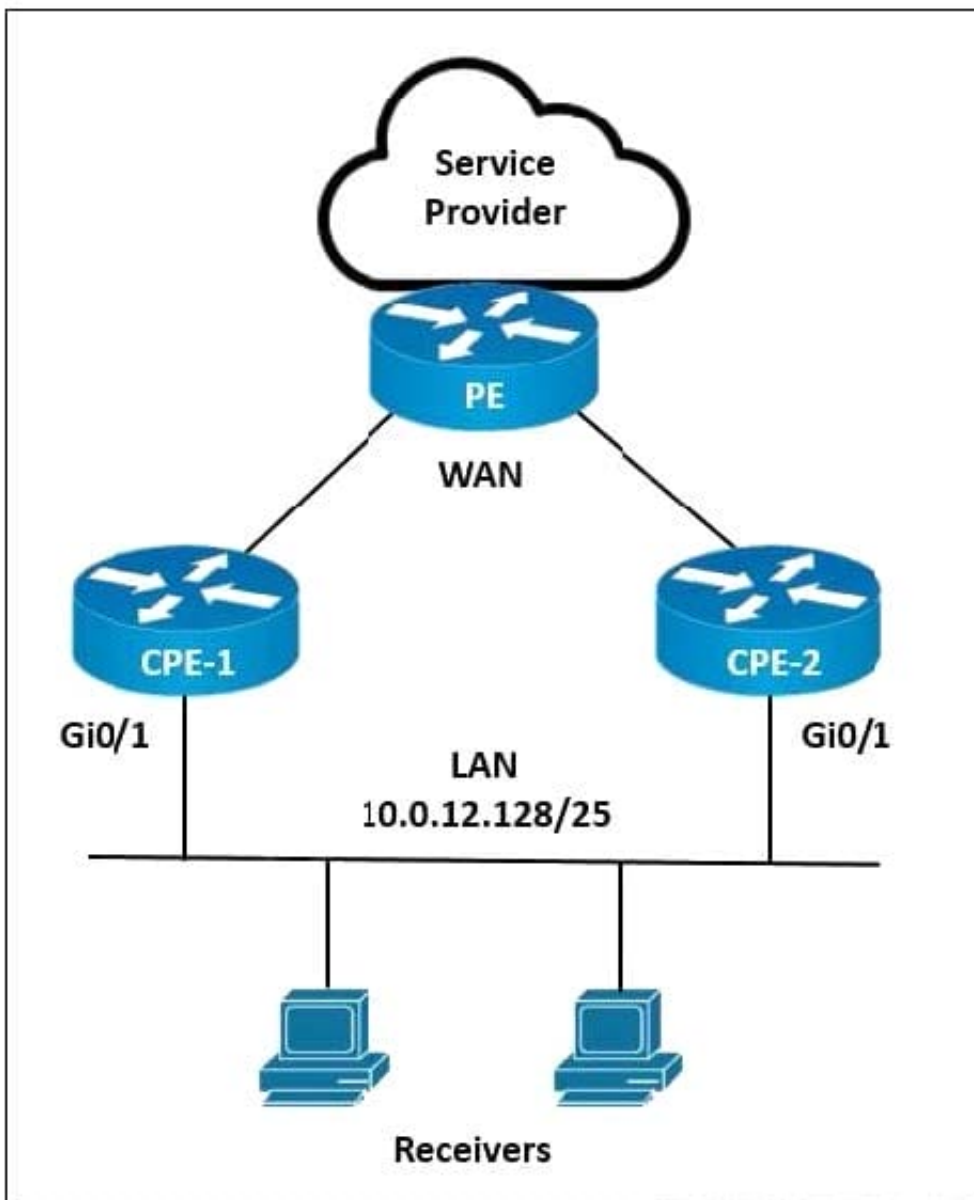
Which command on PE-B successfully completes the configuration?

- A. PE-B(config-if)#ip ospf message-digest-key 1 md5 44578611 PE-B(config-if)#ip ospf authentication null
- B. PE-B(config-if)#ip ospf message-digest-key 1 md5 44578611 PE-B(config-if)#ip ospf authentication key-chain 44578611
- C. PE-B(config-if)#ip ospf message-digest-key 1 md5 44568611 PE-B(config-if)#ip ospf authentication null
- D. PE-B(config-if)#ip ospf message-digest-key 1 md5 44578611 PE-B(config-if)#ip ospf authentication message-digest

Correct Answer: D

QUESTION 3

Refer to the exhibit.



A network engineer is implementing multicast services on CPE-1 and CPE-2. CPE-1 must be configured as the preferred IGMP querier for the LAN segment. PIM-SM must be implemented on the LAN interfaces with an IGMP version that supports (*, G) joins only. Which configurations must the engineer implement on CPE-1 and CPE-2?

A. On CPE-1:

```
interface GigabitEthernet0/1
```

```
ip address 10.0.12.129 255.255.255.128
```

```
ip pim sparse-mode
```

```
ip igmp version 2
```

On CPE-2:

```
interface GigabitEthernet0/1
```

ip address 10.0.12.130 255.255.255.128

ip pim sparse-mode

ip igmp version 2

B. On CPE-1:

interface GigabitEthernet0/1

ip address 10.0.12.130 255.255.255.128

ip pim sparse-mode

ip igmp version 3

On CPE-2:

interface GigabitEthernet0/1

ip address 10.0.12.129 255.255.255.128

ip pim sparse-mode

ip igmp version 3

C. On CPE-1:

interface GigabitEthernet0/1

ip address 10.0.12.130 255.255.255.128

ip pim sparse-mode

ip igmp version 2

On CPE-2:

interface GigabitEthernet0/1

ip address 10.0.12.129 255.255.255.128

ip pim sparse-mode

ip igmp version 2

D. On CPE-1:

interface GigabitEthernet0/1

ip address 10.0.12.129 255.255.255.128

ip pim sparse-mode

ip igmp version 3

On CPE-2:

```
interface GigabitEthernet0/1
```

```
ip address 10.0.12.130 255.255.255.128
```

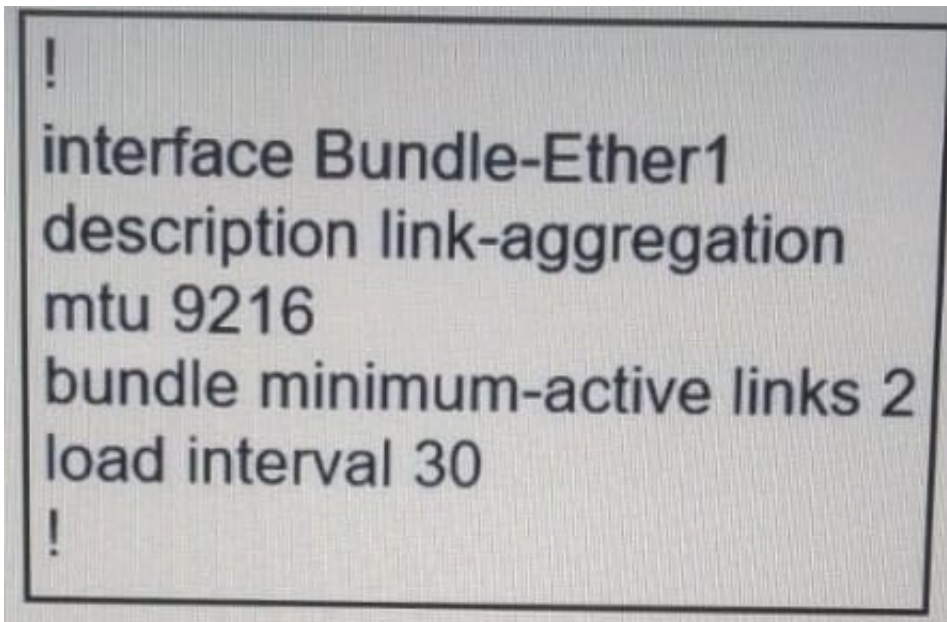
```
ip pim sparse-mode
```

```
ip igmp version 3
```

Correct Answer: A

QUESTION 4

Refer to the exhibit.



Which the link aggregation configuration router is running on Cisco IOS XR software, which LACP interface configuration is needed to add the interface to the bundle?

- A. `interface TenGigE0/1/0/5`
`description bundle_1_link`
`bundle id 1`
`load interval 30`
- `interface T enGigE0/1/0/6`
`description bundle 1 link`
`bundle id 1`
`load interval 30`
- B. `interface TenGigE0/1/0/5`
`description bundle_1_link`
`id 1 mode active`
`load interval 30`
- `interface T enGigE0/1/0/6`
`description bundle 1 link`
`id 1 mode active`
`load interval 30`
- C. `interface TenGigE0/1/0/5`
`description bundle_1_link`
`bundle id 1 mode active`
`load interval 30`
- `interface T enGigE0/1/0/6`
`description bundle 1 link`
`bundle id 1 mode active`
`load interval 30`
- D. `interface TenGigE0/1/0/5`
`description bundle_1_link`
`bundle mode active`
`load interval 30`
- `interface T enGigE0/1/0/6`
`description bundle 1 link`
`bundle mode active`
`load interval 30`

A. Option A

B. Option B

C. Option C

D. Option D

Correct Answer: C

QUESTION 5

Refer to the exhibits.

```
ip flow-export destination 192.168.1.2
ip flow-export version 9

interface gigabitethernet0/1
 ip flow ingress
```

Which information is provided for traceback analysis when this configuration is applied?

- A. source interface
- B. packet size distribution
- C. IP sub flow cache
- D. BGP version

Correct Answer: C

[350-501 VCE Dumps](#)

[350-501 Study Guide](#)

[350-501 Exam Questions](#)