

## 300-820<sup>Q&As</sup>

Implementing Cisco Collaboration Cloud and Edge Solutions (CLCEI)

### Pass Cisco 300-820 Exam with 100% Guarantee

Free Download Real Questions & Answers **PDF** and **VCE** file from:

<https://www.leads4pass.com/300-820.html>

100% Passing Guarantee  
100% Money Back Assurance

Following Questions and Answers are all new published by Cisco  
Official Exam Center

-  **Instant Download** After Purchase
-  **100% Money Back** Guarantee
-  **365 Days** Free Update
-  **800,000+** Satisfied Customers



**QUESTION 1**

An engineer is deploying Mobile and Remote Access to allow external Cisco Jabber users to sign into a Cisco UCM cluster via Cisco Expressways. The users will sign-in in the format username@cisco.com. Contact photos for Jabber are hosted on a webserver with the FQDN of phonebook cisco.com. Which configuration must be completed to allow external Jabber users to see contact photos?

- A. An HTTP allow list entry must be made on the Expressway-E for phonebook cisco.com.
- B. A SIP allow list entry must be made on the Expressway-E for .\*@cisco.com.
- C. An HTTP allow list entry must be made on the Expressway-C for phonebook cisco.com.
- D. A SIP allow list entry must be made on the Expressway-C for .\*@cisco.com.

Correct Answer: C

<https://community.cisco.com/t5/collaboration-applications/jabber-contact-photo-with-mra/td-p/3050431> upvoted 1 times

---

**QUESTION 2**

Which dial plan component is configured in Expressway-C to route a call to the Cisco UCM?

- A. call routing
- B. traversal subzone
- C. call policy
- D. search rule

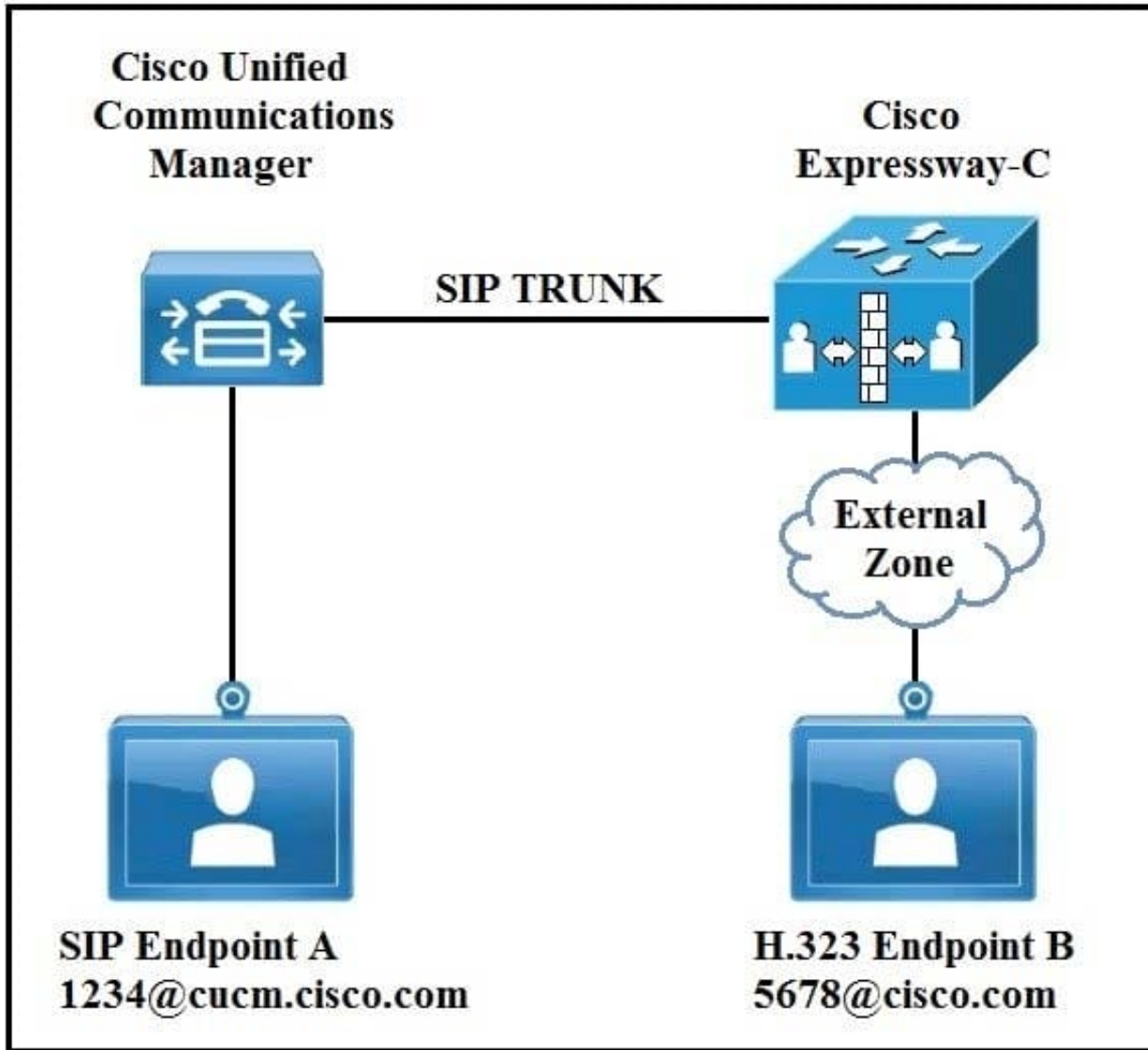
Correct Answer: D

Reference: <https://cmslab.ciscolive.com/pod8/cucm/expctrunk>

---

**QUESTION 3**

Refer to the exhibit.



In an environment SIP devices are registered to CUCM and H.323 devices to VCS. What would be required to enable these calls to setup correctly?

- A. Create a presearch transform.
- B. Change the domain of SIP endpoint A to cisco.com.
- C. Disable SIP in the external zone.
- D. Change the interworking mode to On.

Correct Answer: D

**QUESTION 4**

An organization has a domain name of example.com. Which two SRV records are valid for a SIP and H 323 communication? (Choose two)

- A. \_collab-edge.\_tls.example.com

B. \_sips\_tcp.example.com

C. \_h323ls\_tcp.example.com

D. \_h323ls\_udp.example.com

E. \_sips\_udp.example.com

Correct Answer: BD

---

## QUESTION 5

An organization wants to be able to call IP addresses and URI addresses. An engineer must configure Cisco Expressways to manage this request from the endpoints in the organization. How would the engineer configure the Expressways to allow these calls to be completed to external IP addresses?

A. Set calls to unknown IP addresses to direct on the Cisco Expressways, and add a search rule on the Expressway-E

B. Set calls to unknown IP addresses to indirect on the Cisco Expressways, and add a search rule on the Expressway-E

C. Use search rules to manage calls to IP addresses, and the direct/indirect setting on the Expressway is used as a fallback only if the search rules do not exist

D. Set calls to unknown IP addresses to indirect on the Expressway-C and direct on the Expressway-E, and add a search rule on the Expressway-E

Correct Answer: D

Recommended configuration for firewall traversal [https://www.cisco.com/c/en/us/td/docs/voice\\_ip\\_comm/expressway/admin\\_guide/X14-0/exwy\\_b\\_cisco-expressway-administrator-guide/exwy\\_m\\_dial-plan-and-call-processing.html](https://www.cisco.com/c/en/us/td/docs/voice_ip_comm/expressway/admin_guide/X14-0/exwy_b_cisco-expressway-administrator-guide/exwy_m_dial-plan-and-call-processing.html)

[Latest 300-820 Dumps](#)

[300-820 VCE Dumps](#)

[300-820 Practice Test](#)