

300-730^{Q&As}

Implementing Secure Solutions with Virtual Private Networks (SVPN)

Pass Cisco 300-730 Exam with 100% Guarantee

Free Download Real Questions & Answers **PDF** and **VCE** file from:

<https://www.leads4pass.com/300-730.html>

100% Passing Guarantee
100% Money Back Assurance

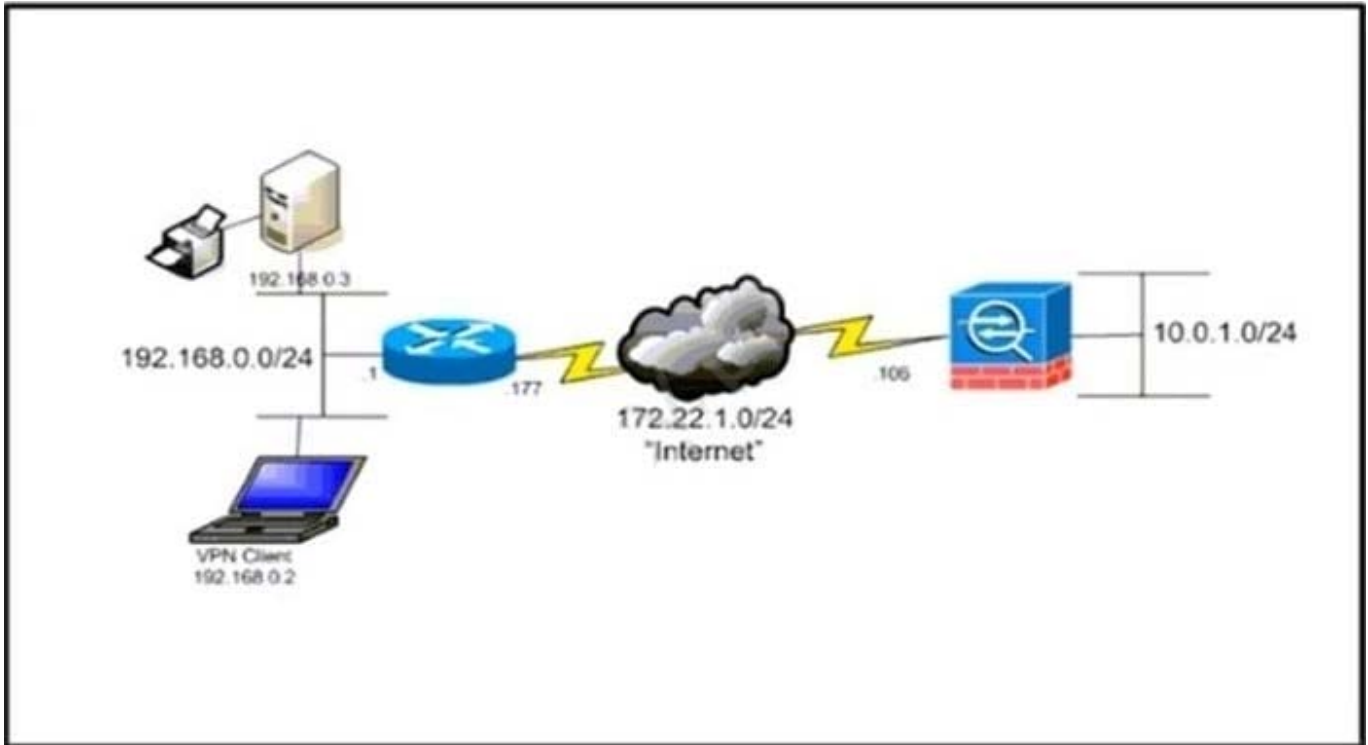
Following Questions and Answers are all new published by Cisco
Official Exam Center

-  **Instant Download** After Purchase
-  **100% Money Back** Guarantee
-  **365 Days** Free Update
-  **800,000+** Satisfied Customers



QUESTION 1

Refer to the exhibit.



The network administrator must allow the Cisco AnyConnect Secure Mobility Client to securely access the corporate resources via IKEv2 and print locally. Traffic that is destined for the Internet must still be tunneled to the Cisco ASA. Which configuration does the administrator use to accomplish this goal?

- A. Split exclude policy with a deny for 192.168.0.3/32.
- B. Split exclude policy with a permit for 0.0.0.0/32.
- C. Tunnel all policy.
- D. Split include policy with a permit for 192.168.0.0/24.

Correct Answer: B

QUESTION 2

An engineer notices that while an employee is connected remotely, all traffic is being routed to the corporate network. Which split-tunnel policy allows a remote client to use their local provider for Internet access when working from home?

- A. tunnelall
- B. excludeall
- C. tunnelspecified

D. excludespecified

Correct Answer: C

QUESTION 3

Refer to the exhibit.

```
interface Ethernet0
  nameifoutside
  security-level 0
  ip address 172.16.1.2 255.255.255.0
!
interface Ethernet1
  nameifinside
  security-level 100
  ip address 10.1.0.1 255.255.255.0
!
object network InsideNet
  subnet 10.1.7.0 255.255.255.0
!
object network RemoteNet
  subnet 10.1.9.0 255.255.255.0
!
object network RemoteNet2
  subnet 10.1.10.0 255.255.254.0
!
object network RemoteNet3
  subnet 10.1.11.0 255.255.255.0
!
route outside 0.0.0.0 0.0.0.0 172.16.1.1
route outside 10.1.11.0 255.255.255.0 172.16.1.1
!
access-list cmap10 extended permit ip object InsideNet object RemoteNet
access-list cmap20 extended permit ip object InsideNet object RemoteNet2
access-list cmap30 extended permit ip object InsideNet object RemoteNet3
!
crypto ipsec ikev1 transform-set AES256 esp-aes-256 esp-sha-hmac
!
crypto ikev1 policy 10
  authentication pre-share
  encryption 3des
  hash sha
  group 2
  lifetime 86400
  no crypto isakmp nat-traversal
!
crypto map cmap 10 match address cmap10
crypto map cmap 10 set peer 172.17.1.1
crypto map cmap 20 set ikev1 transform-set AES256
crypto map cmap 20 match address cmap20
crypto map cmap 20 set peer 172.18.1.1
crypto map cmap 20 set ikev1 transform-set AES256
crypto map cmap 30 match address cmap30
crypto map cmap 30 set peer 172.19.1.1
crypto map cmap 30 set ikev1 transform-set AES256
crypto map cmap interface outside
```

An engineer has configured two new VPN tunnels to 172.18.1.1 and 172.19.1.1. However, communication between 10.1.0.10 and 10.1.11.10 does not function. Which action should be taken to resolve this issue?

- A. Remove and reapply the crypto map to the interface.
- B. Insert routes for the 10.1.9.0/24 and 10.1.10.0/24 subnets.
- C. Modify the transform set to use transport mode.
- D. Adjust the network objects to match the appropriate subnets.

Correct Answer: D

QUESTION 4

Refer to the exhibit.

```
interface Tunnel0
ip address 192.168.1.1 255.255.255.0
no ip redirects
ip mtu 1440
ip nhrp map multicast dynamic
ip nhrp network-id 1
no ip split-horizon eigrp 90
ip next-hop-self eigrp 90
tunnel source FastEthernet0/0
tunnel mode gre multipoint
tunnel key 0
tunnel protection ipsec profile cisco
```

DMVPN spoke-to-spoke traffic works, but it passes through the hub, and never sends direct spoke-to-spoke traffic. Based on the tunnel interface configuration shown, what must be configured on the hub to solve the issue?

- A. Enable NHRP redirect.
- B. Enable split horizon.
- C. Enable IP redirects.
- D. Enable NHRP shortcut.

Correct Answer: A

QUESTION 5

Which VPN does VPN load balancing on the ASA support?

- A. VTI
- B. IPsec site-to-site tunnels
- C. L2TP over IPsec
- D. Cisco AnyConnect

Correct Answer: D

[300-730 VCE Dumps](#)

[300-730 Practice Test](#)

[300-730 Exam Questions](#)