

300-630^{Q&As}

Implementing Cisco Application Centric Infrastructure - Advanced
(DCACIA)

Pass Cisco 300-630 Exam with 100% Guarantee

Free Download Real Questions & Answers **PDF** and **VCE** file from:

<https://www.leads4pass.com/300-630.html>

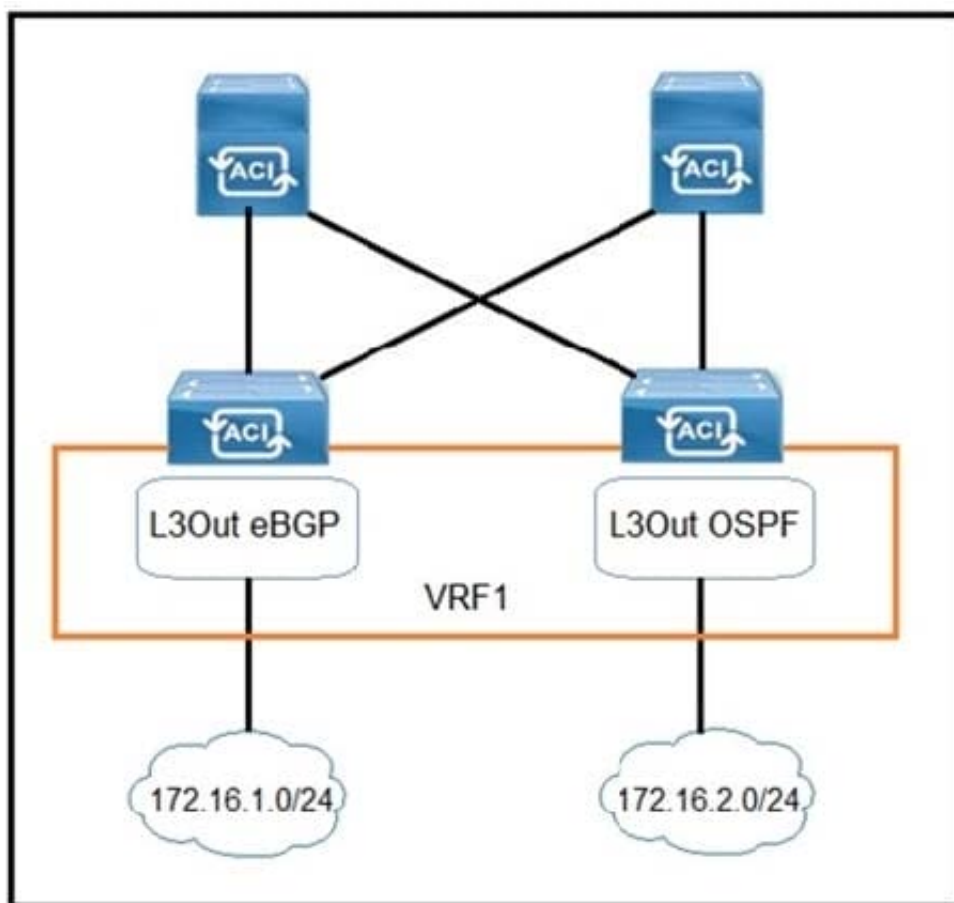
100% Passing Guarantee
100% Money Back Assurance

Following Questions and Answers are all new published by Cisco
Official Exam Center

- ⚙️ **Instant Download** After Purchase
- ⚙️ **100% Money Back** Guarantee
- ⚙️ **365 Days** Free Update
- ⚙️ **800,000+** Satisfied Customers



QUESTION 1



Refer to the exhibit. Which configuration must be implemented on L3Out EBGP to advertise out of the fabric 172.16.2.0/24 network that is learned from L3Out OSPF?

Ⓐ

Create Subnet
Specify the Subnet

IP Address:
address/mask

scope: Export Route Control Subnet
 Import Route Control Subnet
 External Subnets for the External EPG
 Shared Route Control Subnet
 Shared Security Import Subnet

Ⓑ

Create Subnet
Specify the Subnet

IP Address:
address/mask

scope: Export Route Control Subnet
 Import Route Control Subnet
 External Subnets for the External EPG
 Shared Route Control Subnet
 Shared Security Import Subnet

C.

Create Subnet
Specify the Subnet

IP Address:
address/mask

scope: Export Route Control Subnet
 Import Route Control Subnet
 External Subnets for the External EPG
 Shared Route Control Subnet
 Shared Security Import Subnet

D.

Create Subnet
Specify the Subnet

IP Address:
address/mask

scope: Export Route Control Subnet
 Import Route Control Subnet
 External Subnets for the External EPG
 Shared Route Control Subnet
 Shared Security Import Subnet

A. Option A

B. Option B

C. Option C

D. Option D

Correct Answer: A

QUESTION 2

What is the purpose of the Forwarding Tag (FTAG) in Cisco ACI?

A. FTAG is used in Cisco ACI to add a label to the iVXLAN traffic in the fabric to apply the correct policy.

B. FTAG is used in Cisco ACI to add a label to the VXLAN traffic in the fabric to apply the correct policy.

C. FTAG trees in Cisco ACI are used to load balance unicast traffic.

D. FTAG trees in Cisco ACI are used to load balance multi-destination traffic.

Correct Answer: D

Reference: https://www.cisco.com/c/en/us/td/docs/switches/datacenter/aci/apic/sw/1-x/aci-fundamentals/b_ACI-Fundamentals/b_ACI-Fundamentals_chapter_010010.html#concept_1E8BF286E1C043EF839D80935FDF9F50

QUESTION 3

What is a design implication for Cisco ACI using an application-centric approach?

- A. Multiple VLANs and/or multiple EPGs are under one bridge domain
- B. VLAN numbers are in the names of the bridge domain and EPG objects
- C. One EPG is mapped to multiple bridge domains
- D. One VLAN equals one EPG equals one bridge domain

Correct Answer: C

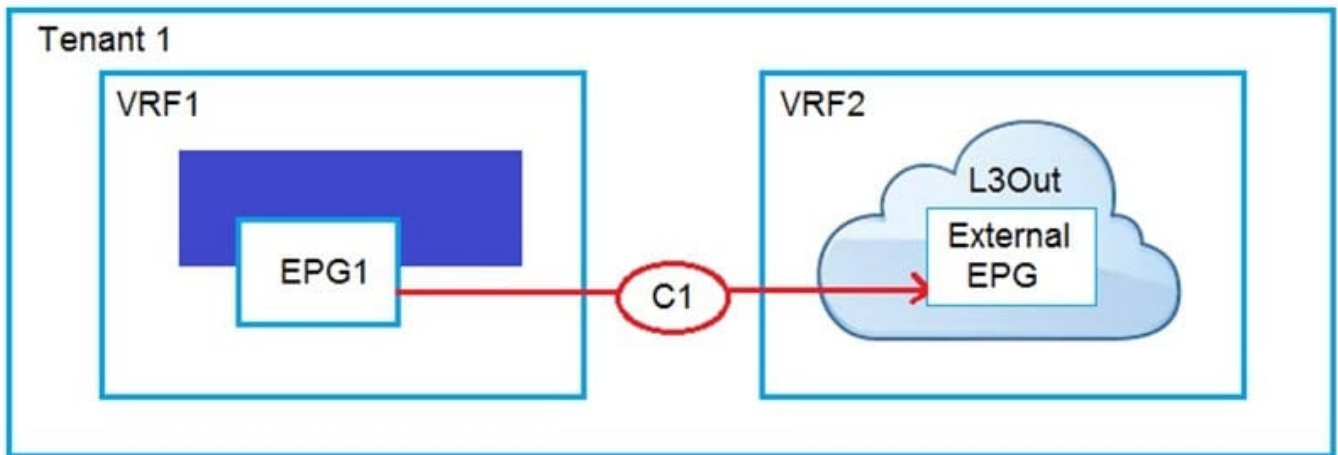
QUESTION 4

What are two characteristics of Cisco ACI interaction with MSTP? (Choose two.)

- A. A Cisco ACI leaf flushes all local endpoints in the received EPG when an MSTP TCN frame is received.
- B. A static path binding is required for native VLAN to carry the MST BPDUs in existing EPGs.
- C. Mis-cabling protocol is used to snoop the MSTP TCN packets.
- D. A dedicated EPG must be created for the native VLAN ID with static bindings toward the MSTP-enabled switches.
- E. The PVST simulation must be configured on external network switches to support MSTP.

Correct Answer: CD

QUESTION 5



Refer to the exhibit. An engineer must have communication between EPG1 in VRF1 and External EPG in VRF2. Which three actions should be taken for the defined subnets in the L3Out External EPG to accomplish this goal? (Choose three.)

- A. Enable Shared Route Control Subnet
- B. Enable External Subnets for External EPG
- C. Enable Export Route Control Subnet
- D. Enable Shared Security Import Subnet
- E. Enable Aggregate Shared Routes
- F. Enable Import Route Control Subnet

Correct Answer: CDF

Reference: <https://www.cisco.com/c/en/us/solutions/collateral/data-center-virtualization/application-centric-infrastructure/guide-c07-743150.html>

[Latest 300-630 Dumps](#)

[300-630 PDF Dumps](#)

[300-630 Exam Questions](#)