

300-630^{Q&As}

Implementing Cisco Application Centric Infrastructure - Advanced
(DCACIA)

Pass Cisco 300-630 Exam with 100% Guarantee

Free Download Real Questions & Answers **PDF** and **VCE** file from:

<https://www.lead4pass.com/300-630.html>

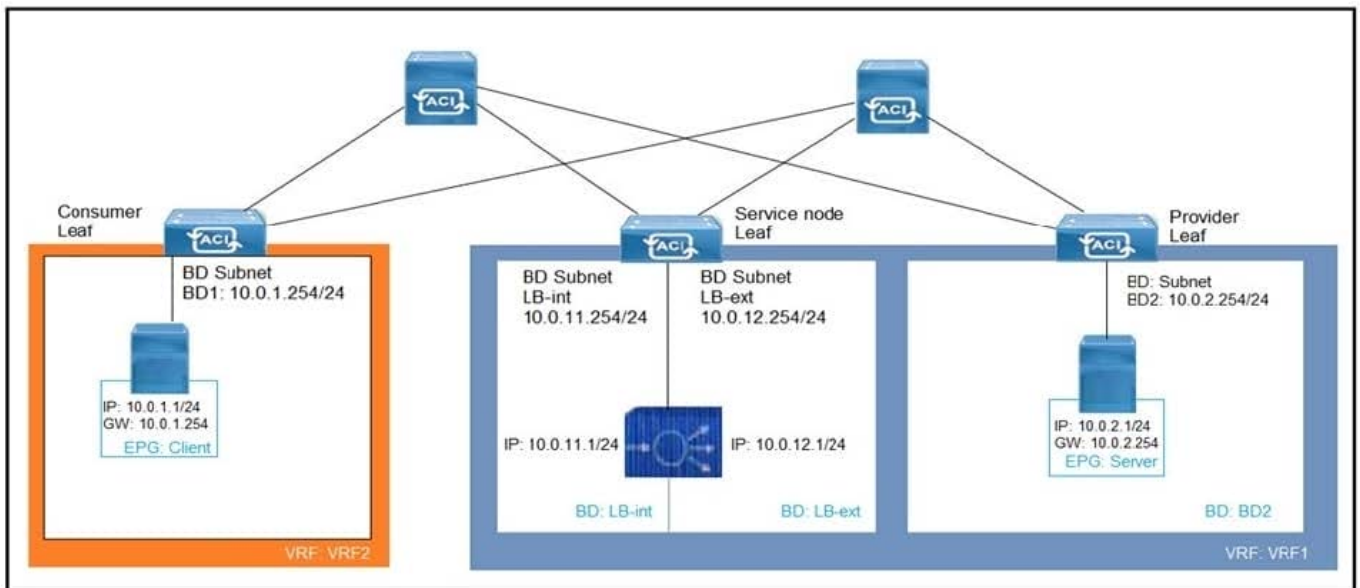
100% Passing Guarantee
100% Money Back Assurance

Following Questions and Answers are all new published by Cisco
Official Exam Center

- ⚙️ **Instant Download** After Purchase
- ⚙️ **100% Money Back** Guarantee
- ⚙️ **365 Days** Free Update
- ⚙️ **800,000+** Satisfied Customers



QUESTION 1



Refer to the exhibit. What must be configured to allow the PBR node (LB-int) to monitor the availability of the endpoint that is in the EPG server?

- A. Endpoint Dataplane Learning
- B. Unicast Route disabled for client and server bridge domains
- C. PBR node tracking
- D. Direct Connect in the service graph template

Correct Answer: A

QUESTION 2

As part of a newly deployed ACI fabric, a pair of border leaf switches have been deployed to provide shared services for all tenants. The configured L3Out runs OSPF as the routing protocol. The requirement is to advertise the routes from the border leaf switches to the compute leaf switches. Which configuration must be implemented to meet these requirements?

- A. Configure a BGP route reflector policy for the Cisco ACI pod
- B. Define the shared L3Out in the common tenant
- C. Enable Import Route Control Enforcement in the L3Out policy
- D. Define the consumer subnet under the consumer EPG

Correct Answer: A

Reference: <https://www.cisco.com/c/en/us/solutions/collateral/data-center-virtualization/application-centric->

infrastructure/guide-c07-743150.html

QUESTION 3

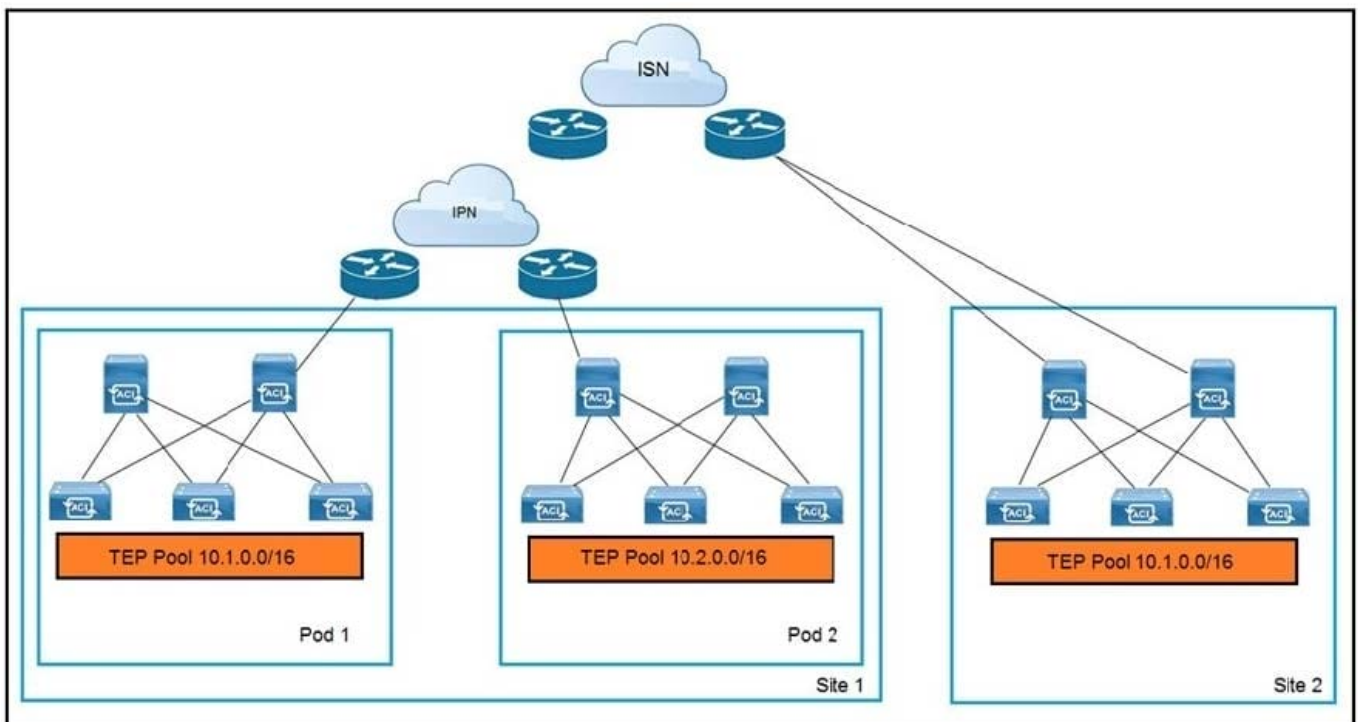
What are two characteristics of Cisco ACI and Spanning Tree Protocol interaction? (Choose two.)

- A. When a TCN BPDU is received in a VLAN, Cisco ACI flushes the endpoints for the associated encapsulation.
- B. STP BPDUs are dropped due to MCP.
- C. MST BPDUs are flooded correctly in Cisco ACI fabric without additional configuration.
- D. BPDU filter and BPDU guard can be configured on Cisco ACI leaf edge ports.
- E. Cisco ACI must be configured as the STP root for all VLANs.

Correct Answer: DE

Reference: https://www.cisco.com/c/en/us/td/docs/switches/datacenter/aci/aci_virtual_edge/configuration/1-x/b_Virtual_Edge_Config_Guide_1_2_2/b_Virtual_Edge_Config_Guide_1_2_2_chapter_0101.html

QUESTION 4



Refer to the exhibit. An engineer extends a Cisco ACI Multi-Pod setup to a Cisco ACI Multi-Site implementation. Which action allows the interconnection?

- A. Configure BIDIR-PIM in the IPN and ISN
- B. Use dedicated uplinks on Site 1 spines for ISN connections

- C. Connect all spines to the IPN and ISN
- D. Filter the advertisement of the Site 2 TEP pool into the IPN

Correct Answer: A

QUESTION 5

An engineer implements the Cisco ACI solution and needs to confirm that the leaf switch correctly learns the remote endpoint MAC. Which information must be included in the VXLAN packet that is received from the Cisco ACI spine for the Cisco ACI leaf to learn MAC as a remote endpoint?

- A. VRF
- B. application profile
- C. bridge domain
- D. EPG

Correct Answer: C

Reference: <https://www.cisco.com/c/en/us/solutions/collateral/data-center-virtualization/application-centric-infrastructure/white-paper-c11-739989.html>

[Latest 300-630 Dumps](#)

[300-630 VCE Dumps](#)

[300-630 Braindumps](#)