

## 300-615<sup>Q&As</sup>

Troubleshooting Cisco Data Center Infrastructure (DCIT)

### Pass Cisco 300-615 Exam with 100% Guarantee

Free Download Real Questions & Answers **PDF** and **VCE** file from:

<https://www.leads4pass.com/300-615.html>

100% Passing Guarantee  
100% Money Back Assurance

Following Questions and Answers are all new published by Cisco  
Official Exam Center

-  **Instant Download** After Purchase
-  **100% Money Back** Guarantee
-  **365 Days** Free Update
-  **800,000+** Satisfied Customers



## QUESTION 1

Refer to the exhibit.

```
switch1# show vpc consistency-parameters global
Legend:
Type 1 : vPC will be suspended in case of mismatch
Name                               Type      Local Value                               Peer Value
-----
Qos                                  1        ([], [3], [], [], [], [])              ([], [3], [], [], [], [])
Network QoS (MTU)                   1        (9216, 2240, 0, 0, 0, 0)                 (9116, 2240, 0, 0, 0, 0)
Network QoS (Pause)                 1        (F, T, F, F, F, F)                       (F, T, F, F, F, F)
Input Queuing (Bandwidth)           1        (50, 50, 0, 0, 0, 0)                     (50, 50, 0, 0, 0, 0)
Input Queuing (Absolute Priority)    1        (F, F, F, F, F, F)                       (F, F, F, F, F, F)
Output Queuing (Bandwidth)          1        (50, 50, 0, 0, 0, 0)                     (50, 50, 0, 0, 0, 0)
Output Queuing (Absolute Priority)  1        (F, F, F, F, F, F)                       (F, F, F, F, F, F)
STP Mode                             1        Rapid-PVST                               Rapid-PVST
STP Disabled                         1        None                                       None
STP MST Region Name                  1        ""                                         ""
STP MST Region Revision              1        0                                           0
STP MST Region Instance              1
to VLAN Mapping
STP Loopguard                       1        Disabled                                  Disabled
STP Bridge Assurance                 1        Enabled                                    Enabled
STP Port Type, Edge                  1        Normal, Disabled                          Normal, Disabled
BPDUFilter, Edge BPDUGuard           1        Disabled                                  Disabled
STP MST Simulate PVST                1        Enabled                                    Enabled
Allowed VLANs                        1,19,91,99,120,757-446                    1,10,19-20,91,99,400-401
Local suspended VLANs                451-486,499,757,797                       403,420,440,442,444
Local suspended VLANs                120
```

The vPC neighborhood between two switches is in suspended state. Which configuration change resolves the issue and brings up the vPC neighborhood?

- A. Change STP Port Type to Network on the peer switch
- B. Enable Bridge Assurance on the local switches
- C. Configure QoS MTU value of 9216 on the peer switch
- D. Add VLAN 400-401 to the configuration on the local switch

Correct Answer: C

Reference:

[https://www.cisco.com/c/en/us/td/docs/switches/datacenter/nexus5000/sw/troubleshooting/guide/N5K\\_Troubleshooting\\_Guide/n5K\\_ts\\_vpc.pdf](https://www.cisco.com/c/en/us/td/docs/switches/datacenter/nexus5000/sw/troubleshooting/guide/N5K_Troubleshooting_Guide/n5K_ts_vpc.pdf)

## QUESTION 2

An engineer troubleshoots FCoE on a Cisco MDS 9000 Series Switch. What does this output indicate about port channel 1?

```
MDS-8# show interface port-channel 1
port-channel1 is down (No operational members)
Hardware is Fibre Channel
Port WWN is 24:03:8c:60:4f:cf:7d:20
Admin port mode is E, trunk mode is on
snmp link state traps are enabled
Port vsan is 1
5 minutes input rate 192 bits/sec,24 bytes/sec, 0 frames/sec
5 minutes output rate 0 bits/sec,0 bytes/sec, 0 frames/sec
380454 frames input,702340532 bytes
0 discards,0 errors
0 invalid CRC/FCS,0 unknown class
0 too long,0 too short
381988 frames output,643629179 bytes
0 discards,0 errors
8370 input OLS,4088 LRR,0 NOS,0 loop inits
6769 output OLS,6757 LRR, 4294 NOS, 1 loop inits
Member[1] : fc1/1 [down]
Member[2] : fc1/2 [down]
```

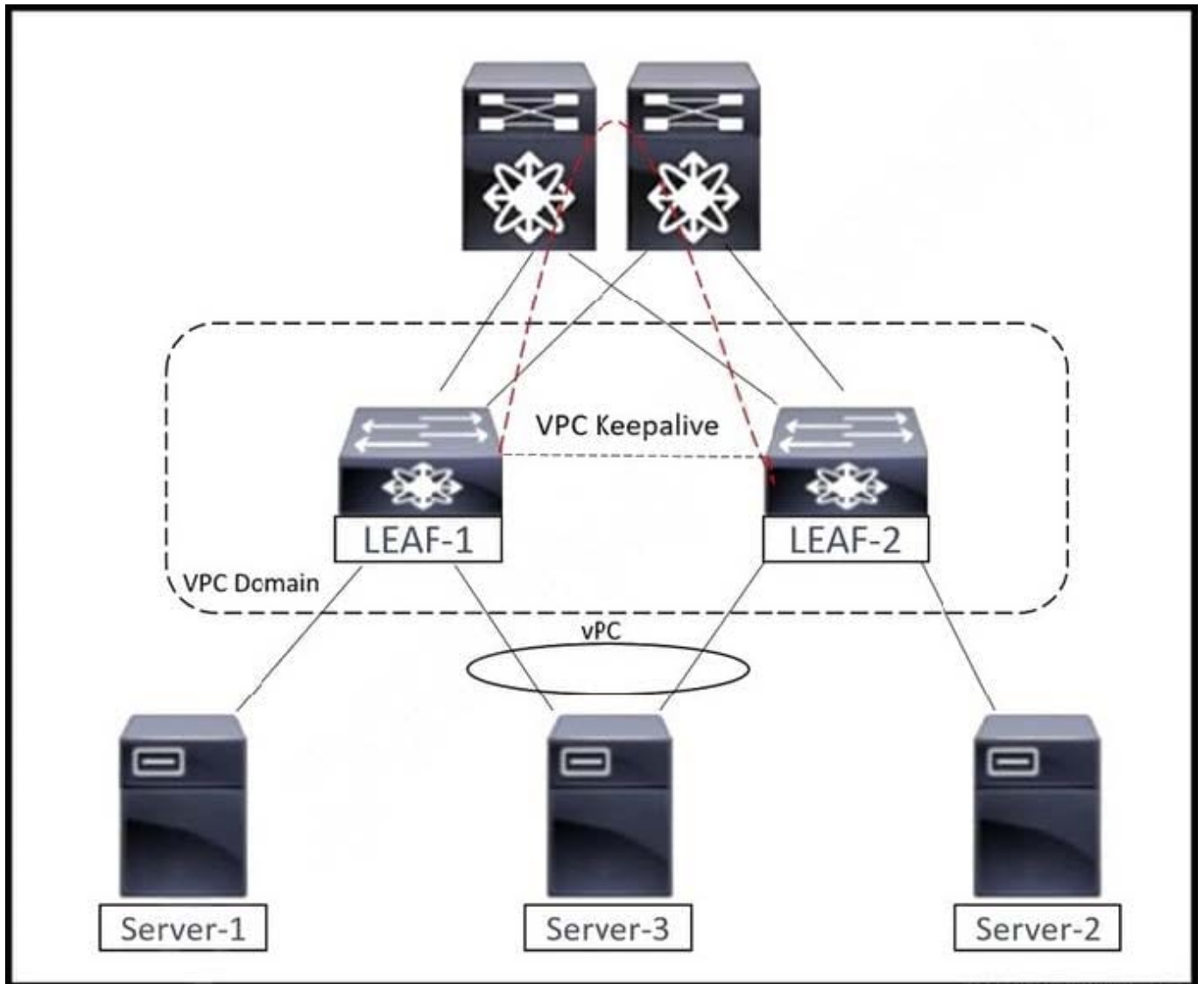
- A. Port channel 1 is configured to connect to an NPIV switch.
- B. Port channel 1 is configured to be an ISL.
- C. Port channel 1 is configured to connect to an NPV switch.
- D. Port channel 1 is configured to connect to a host bus adapter.

Correct Answer: B

---

### QUESTION 3

Refer to the exhibit.



An engineer is troubleshooting the connectivity between Server-1 and Server-2. Which action resolves the connectivity issue?

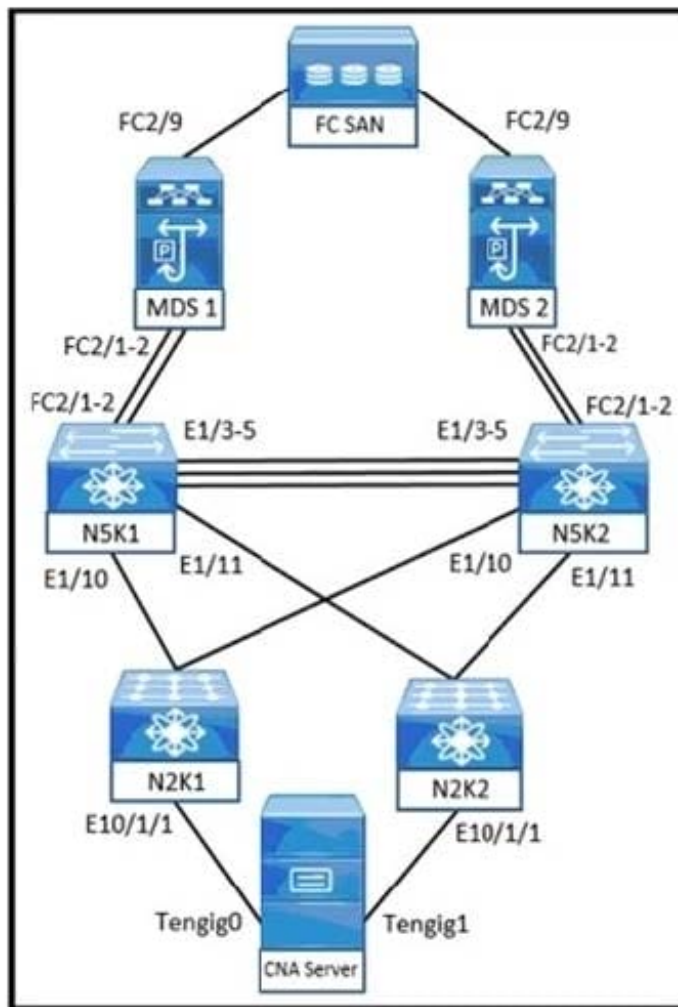
- A. Enable BGP advertise pip feature on both leaf switches
- B. Configure the same source IP address on NVE and virtual peer link on leaf switches
- C. Classify CFS messages for strict priority queue on spine switches
- D. Change all ports on spine switches as port-type fabric

Correct Answer: A

Reference: [https://www.cisco.com/c/en/us/td/docs/dcn/nx-os/nexus9000/101x/configuration/vxlan/cisco-nexus-9000-series-nx-os-vxlan-configuration-guide-release-101x/m\\_configuring\\_vpc\\_multihoming.pdf](https://www.cisco.com/c/en/us/td/docs/dcn/nx-os/nexus9000/101x/configuration/vxlan/cisco-nexus-9000-series-nx-os-vxlan-configuration-guide-release-101x/m_configuring_vpc_multihoming.pdf)

**QUESTION 4**

Refer to the exhibit.



```
N5K1# show platform software fcoe_mgr event-history errors
1) Event:E_DEBUG, length:93, at 203962 usecs after Wed Jun 12
20:33:04 2019 [102] fcoe_mgr_vfc_ac_eval(4946):
DEBUG:shut:Sending event to delete protos of vfc1 due to 62
2) Event:E_DEBUG, length:119, at 197505 usecs after Wed Jun 12
20:33:04 2019 [102] fcoe_mgr_fc2_msg_handler(5706): proto
if_index 1e000000 p_proto (nil)and oxid 8805fc2 usrhandle 0[0]
iuhdr type:1
3) Event:E_DEBUG, length:91, at 197053 usecs after Wed Jun 12
20:33:04 2019 [102] fcoe_mgr_proto_ac_eval(1847): >Bringing down
PROTO 1e000000 due to
truly missing fka
```

An engineer discovered a VFC interface in a down state on a Cisco Nexus Switch. Which action resolves the problem?

- A. Change the cable between the switch and the server
- B. Reset the Cisco Nexus port toward the file server

- C. Update the CNA firmware and driver versions
- D. Modify the fip keepalive message time to 30 seconds

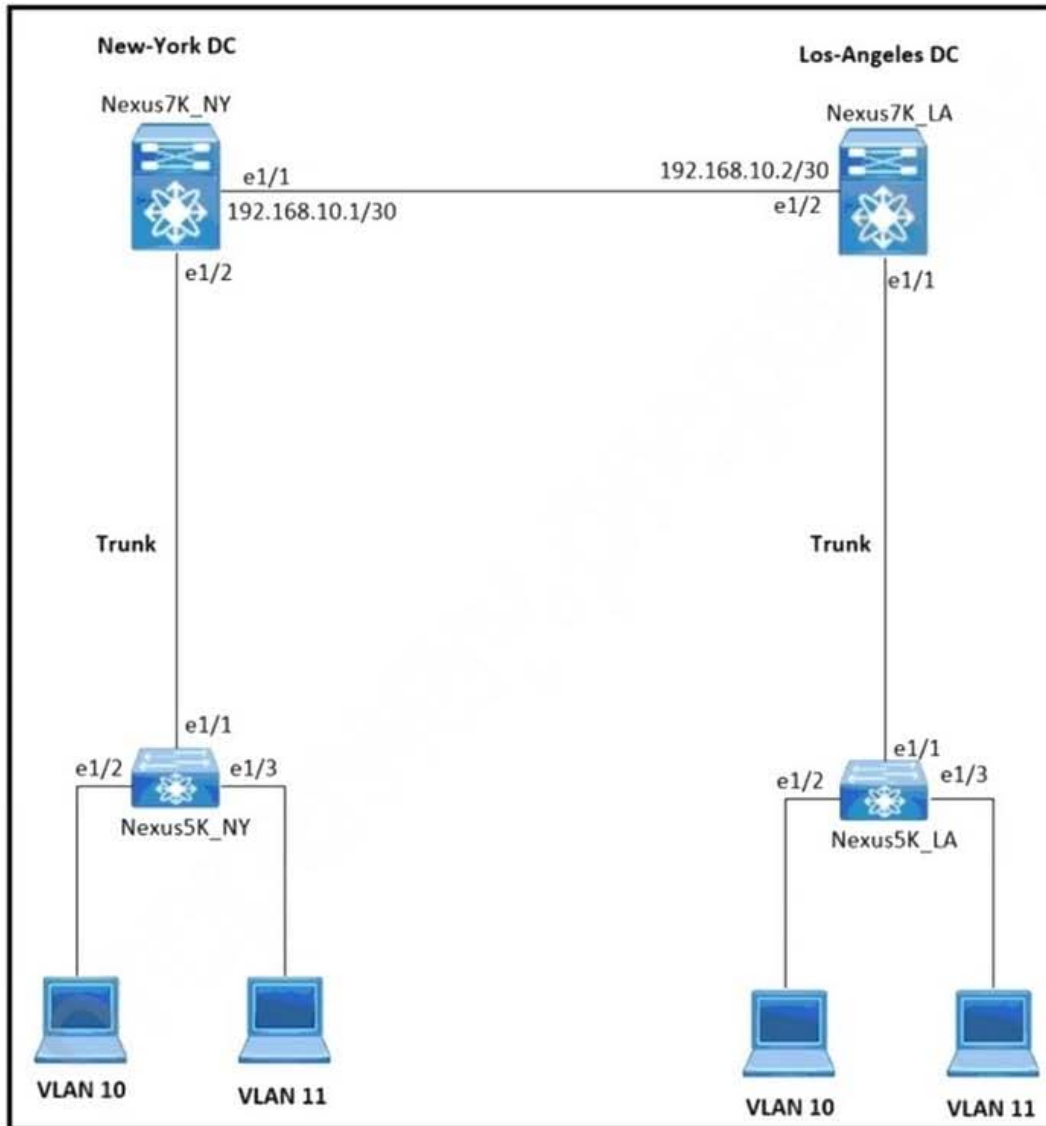
Correct Answer: D

Reference: [https://www.cisco.com/c/en/us/td/docs/switches/datacenter/nexus5000/sw/troubleshooting/guide/N5K\\_Troubleshooting\\_Guide/n5K\\_ts\\_fcoe.html](https://www.cisco.com/c/en/us/td/docs/switches/datacenter/nexus5000/sw/troubleshooting/guide/N5K_Troubleshooting_Guide/n5K_ts_fcoe.html)

---

## QUESTION 5

Refer to the exhibit.



Nexus7K NY	Nexus7K LA
<pre> feature otv interface e1/1  no shutdown  ip address 192.168.10.1/30  ip igmp version 3  mtu 9216  interface e1/2  no shutdown  switchport mode trunk  vlan 5,10-11  otv site-vlan 5,10-11 otv site-identifier 0011.1122.2233  interface overlay 1  otv join-interface e1/1  otv control-group 224.1.1.1  otv data-group 232.1.1.0/24  otv extend-vlan 10-11  no shutdown                     </pre>	<pre> feature otv interface e1/2  no shutdown  ip address 192.168.10.2/30  ip igmp version 3  mtu 9216  interface e1/1  no shutdown  switchport mode trunk  vlan 5,10-11  otv site-vlan 5,10-11 otv site-identifier 0011.1122.2244  interface overlay 1  otv join-interface e1/2  otv control-group 224.1.1.1  otv data-group 232.1.1.0/24  otv extend-vlan 10-11  no shutdown                     </pre>

The OTV adjacency fails to come up. Which set of commands on each switch resolves the issue?

- A. otv extend-vlan 5 otv site-vlan 5
- B. otv extend-vlan 5 no otv site-vlan 5-10,11
- C. otv extend-vlan 5 no otv extend-vlan 11
- D. no otv site-vlan 5,10-11 otv site-vlan 5

Correct Answer: D

[300-615 VCE Dumps](#)

[300-615 Study Guide](#)

[300-615 Braindumps](#)