

300-610^{Q&As}

Designing Cisco Data Center Infrastructure (DCID)

Pass Cisco 300-610 Exam with 100% Guarantee

Free Download Real Questions & Answers **PDF** and **VCE** file from:

<https://www.leads4pass.com/300-610.html>

100% Passing Guarantee
100% Money Back Assurance

Following Questions and Answers are all new published by Cisco
Official Exam Center

-  **Instant Download** After Purchase
-  **100% Money Back** Guarantee
-  **365 Days** Free Update
-  **800,000+** Satisfied Customers



QUESTION 1

An engineer enables the HSRP feature on a Cisco Nexus 7000 Series Switch. It must be ensured that the switch manages packets that are sent to the local vPC MAC address, remote vPC MAC address, and HSRP virtual MAC address.

Which command accomplishes this goal?

- A. peer-switch
- B. peer-gateway
- C. map-server
- D. hsrp preempt

Correct Answer: D

vPC Peer Gateway and HSRP

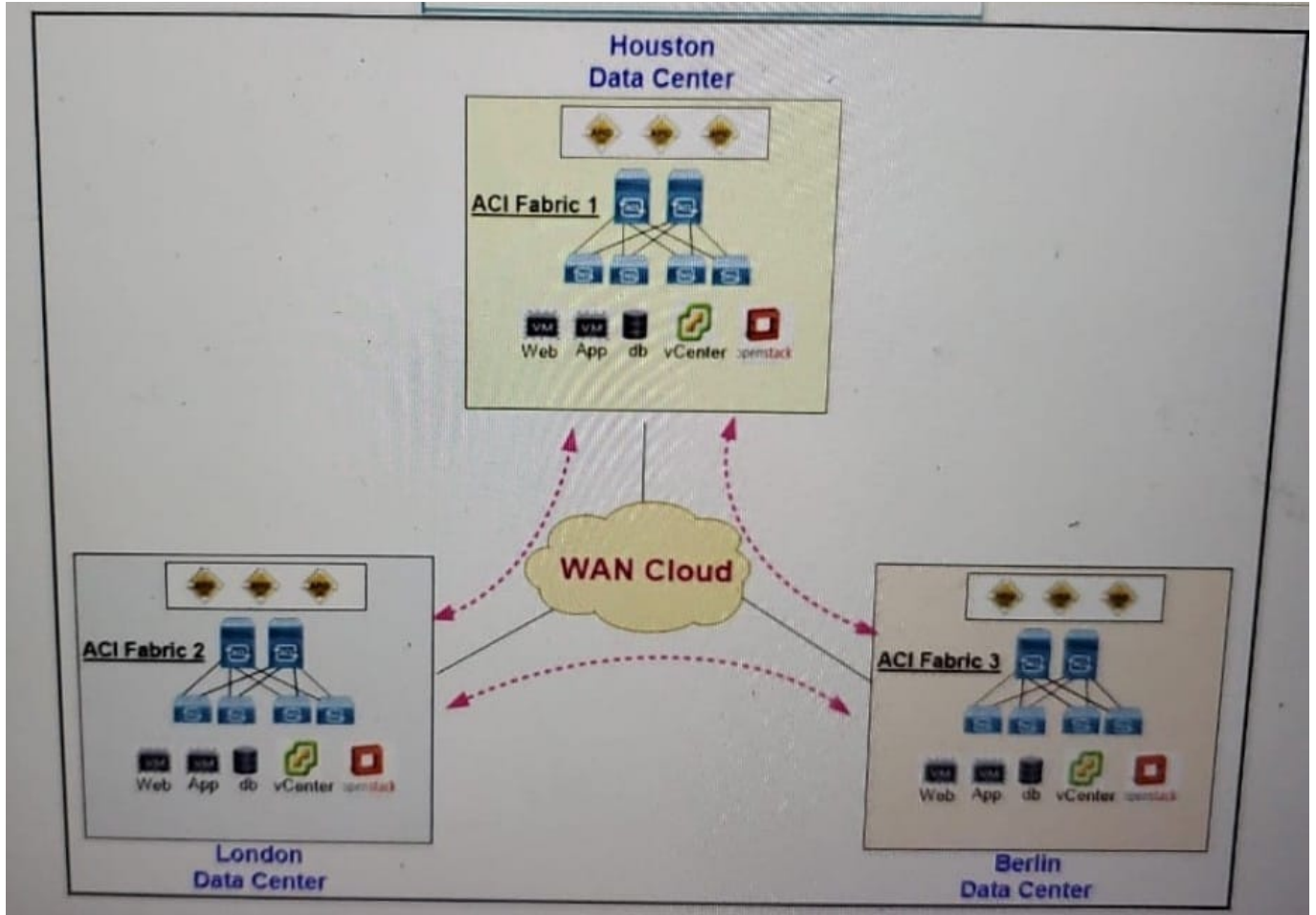
Some third-party devices can ignore the HSRP virtual MAC address and instead use the source MAC address of an HSRP router. In a vPC environment, the packets using this source MAC address may be sent across the vPC peer link,

causing a potential dropped packet. Configure the vPC peer gateway to enable the HSRP routers to directly handle packets sent to the local vPC peer MAC address and the remote vPC peer MAC address, as well as the HSRP virtual MAC

address. See the Cisco Nexus 7000 Series NX-OS Layer 2 Switching Configuration Guide, Release 5.x, for more information on the vPC peer gateway.

QUESTION 2

Refer to the exhibit.



A Cisco engineer is configuring a customer scenario with 2 x MDS 9000 switches 24 x UCS B200M6 blade servers. UCS 64S4 Fabric Interconnect in end-host mode and 3 x UCS 5108 server chassis with 2408 Fabric Extenders The engineer installs 6 x SQL Server 2019 on all blades and then notices that there are read and write latencies

What is the best way to balance the utilization across the shared ports?

- A. Enable "Only dedicate rate mode
- B. Change the assigned speed to 8 Gbps Auto.
- C. Set 4 Gbps performance buffers
- D. Disable restrictions on oversubscription ratios

Correct Answer: D

Reference:

https://www.cisco.com/en/US/docs/storage/san_switches/mds9000/sw/rel_3_x/configuration_guides/fm_3_2/gen2.html#wp1392649

When restrictions on oversubscription ratios are disabled, the bandwidth allocation among the shared ports is proportionate to the configured speed. (If the configured speed is auto, then bandwidth is allocated assuming a speed of 4 Gbps.)

For example, if you have three shared ports configured at 1, 2, and 4 Gbps, then the allocated bandwidth ratio is 1:2:4.

In Cisco SAN-OS Release 3.0 and later (or when restrictions on oversubscription ratios are enabled), port bandwidths are

allocated in equal proportions, regardless of port speed, so, the bandwidth allocation for the same three ports mentioned in the example would be 1:1:1.

QUESTION 3

What are two functions of a Network Services Orchestrator in an NFV environment? (Choose two.)

- A. It operates at the resource-facing services layer and provides overall lifecycle management at the network service level.
- B. It provides an API-based northbound interface for transparent integration with systems that operate at the resource-facing services layer.
- C. It provides a standards-based southbound interface for transparent integration with systems that operate at the customer-facing services layer.
- D. It provides a standards-based northbound interface for transparent integration with systems that operate at the customer-facing services layer.
- E. It operates at the customer-facing services layer and provides the management interface for the virtual network devices.

Correct Answer: AB

Reference:

https://www.cisco.com/c/en/us/td/docs/net_mgmt/msx/3_4/solution_overview/Cisco_VMS_Sol_Overview.pdf

QUESTION 4

Which address pool is used when a vHBA template is created?

- A. MAC
- B. WWPN
- C. IP
- D. UUID

Correct Answer: B

Reference:

https://www.cisco.com/c/en/us/td/docs/unified_computing/ucs/sw/gui/config/guide/2-1/b_UCSM_GUI_Configuration_Guide_2_1/b_UCSM_GUI_Configuration_Guide_2_1_chapter_011010.html

QUESTION 5

Refer to the exhibit

- stretched bridge domain with local subnet
- stretched Layer 2 broadcast domain
- localized bridge domain, subnet, and EPG
- stretched Layer 2 broadcast domain
- stretched bridge domain, subnet, and EPG
- localized Layer 2 broadcast flooding
- localized bridge domain with local subnet
- localized Layer 2 broadcast flooding

In this scenario a Cisco engineer is building a loop-free topology where a dedicated layer of the vPC domain adjacent to the aggregation layer which also runs vPC Is used to interconnect the two data centers together. The engineer globally configures a vPC domain identifier on both vPC devices where the domain ID is the same on both peer devices. Which action successfully forms the domain?

- A. Configure vPC-peer-keepalive link on both peer devices
- B. Put peer device interfaces into a suspended state.
- C. Enable and reuse an ISL Layer 3 trunk port channel
- D. Synchronize the MAC addresses for the member ports

Correct Answer: A

[Latest 300-610 Dumps](#)

[300-610 Study Guide](#)

[300-610 Exam Questions](#)