

300-510^{Q&As}

Implementing Cisco Service Provider Advanced Routing Solutions
(SPRI)

Pass Cisco 300-510 Exam with 100% Guarantee

Free Download Real Questions & Answers **PDF** and **VCE** file from:

<https://www.leads4pass.com/300-510.html>

100% Passing Guarantee
100% Money Back Assurance

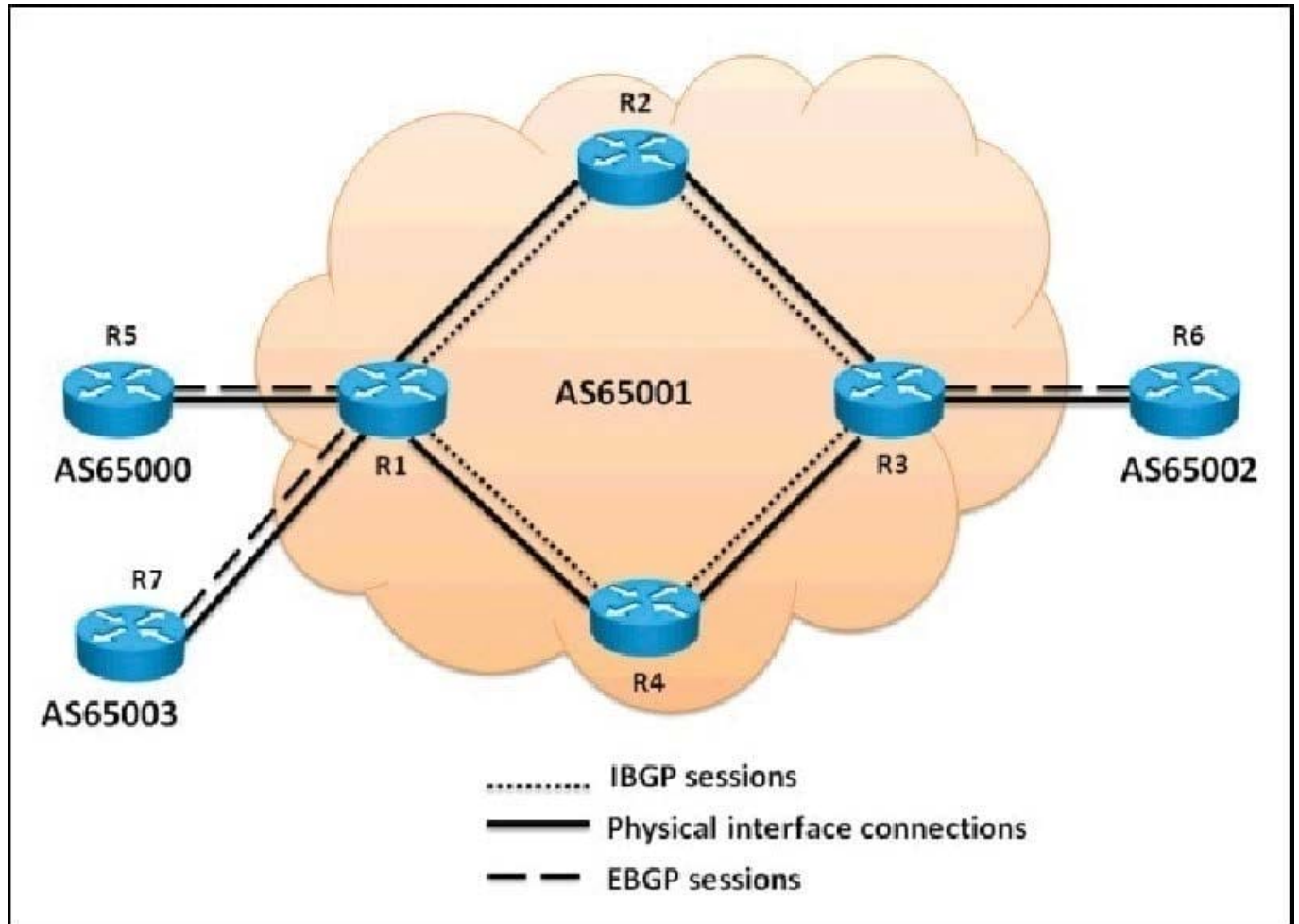
Following Questions and Answers are all new published by Cisco
Official Exam Center

- ⚙️ **Instant Download** After Purchase
- ⚙️ **100% Money Back** Guarantee
- ⚙️ **365 Days** Free Update
- ⚙️ **800,000+** Satisfied Customers



QUESTION 1

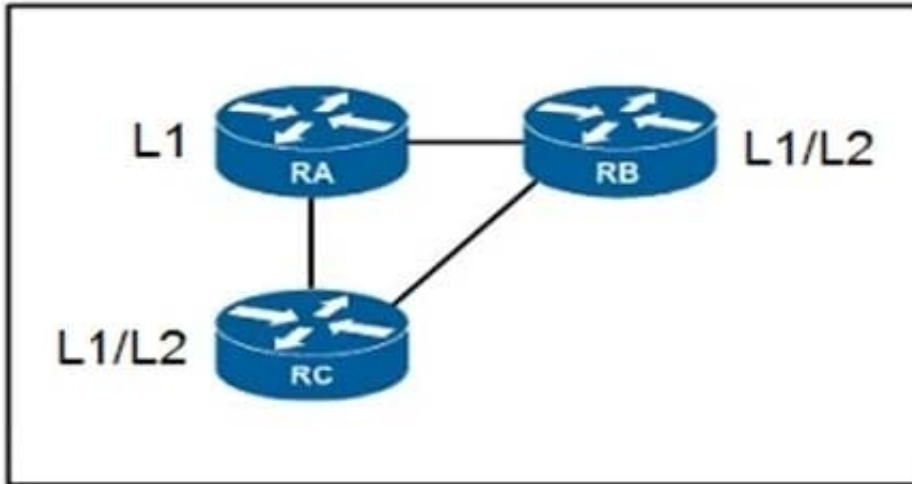
Referring to the topology diagram show in the exhibit, which three statements are correct regarding the BGP routing updates? (Choose three.)



- A. The EBGP routing updates received by R1 from R5 will be propagated to the R2, R4, and R7 routers
- B. The EBGP routing updates received by R3 from R6 will be propagated to the R2 and R4 routers
- C. The EBGP routing updates received by R1 from R5 will be propagated to the R2 and R4 routers
- D. The IBGP routing updates received by R3 from R2 will be propagated to the R6 router
- E. The IBGP routing updates received by R2 from R1 will be propagated to the R3 router
- F. The IBGP routing updates received by R1 from R4 will be propagated to the R5, R7, and R2 routers

Correct Answer: ABD

QUESTION 2



Refer to the exhibit. Routers RA and RB are IS-IS peers configured for NSF, but router RC is an IS-IS peer without NSF capability. If RA undergoes processor switchover, what is the effect on the network environment?

- A. If RC is operating without the Cisco configuration option, only 2 routers tear down their peering relationships and re-establish peering
- B. All peer relationships remain up, but the link-state database is rebuild on each device
- C. If RC is operating without the Cisco configuration option, all three routers tear down their peering relationships and re-establish peering
- D. All peer relationships remain up and the link-state database is unchanged

Correct Answer: B

QUESTION 3

Refer to the exhibit.

```
Router 1:
interface tunnel-te12
ipv4 unnumbered loopback0
autoroute announce
destination 192.168.1.2
path-option 12 dynamic segment-routing
path-protection
```

Router 1 has established an SR-TE tunnel with router 2. Which statement describes this configuration?

- A. Router 1 has a list of labels used to explicitly lay out a path to router 2.

- B. Router 1 and router 2 have a bidirectional tunnel set up with dynamic path selection.
- C. Router 1 is the head-end tunnel and has dynamically chosen a path to router 2.
- D. Router 2 is the head-end tunnel and has explicitly set a path to router 1.

Correct Answer: C

QUESTION 4

Refer to the exhibit.

```
R1
interface gigabitethernet0/0
  ip address 192.168.2.1 255.255.255.0
  ip router isis
router isis
  net 49.0022.1111.1111.1111.00
  is-type level-1

R2
interface gigabitethernet0/1
  ip address 192.168.1.2 255.255.255.0
  ip router isis
router isis
  net 49.0021.1111.1111.1112.00
  is-type level-1
```

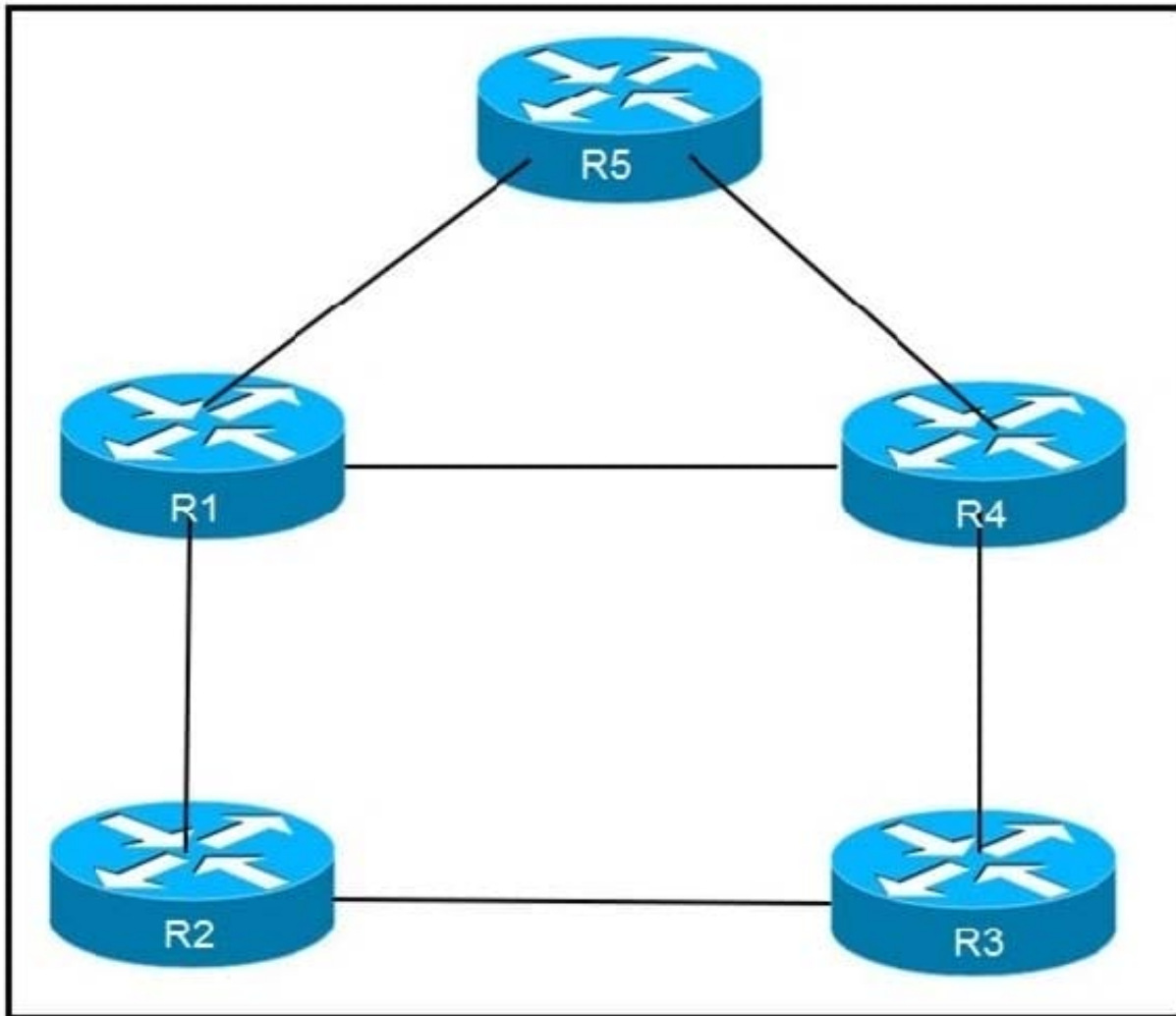
Routers R1 and R2 cannot form a neighbor relationship, but the network is otherwise configured correctly and operating normally. Which two statements describe the problem? (Choose two.)

- A. The two routers are in the same area
- B. The two routers are in different subnets
- C. The two routers have password mismatch issues
- D. The two routers have the same network ID
- E. The two routers are in different areas

Correct Answer: BE

QUESTION 5

Refer to the exhibit.



An engineer is addressing an IS-IS design issue which is running within the topology. All links are running on FastEthernet, except the link between R5 and R4, which is Gigabit Ethernet. Which statement about the design is true?

- A. R4 prefer to reach R5 using R1 as the next hop
- B. All links have equal cost if the default metric is used
- C. R5 prefers to use R4 as the next hop for all routes
- D. R1 prefer to use R5 as the next hop to reach R4

Correct Answer: B

[300-510 VCE Dumps](#)

[300-510 Practice Test](#)

[300-510 Study Guide](#)