

300-420^{Q&As}

Designing Cisco Enterprise Networks (ENSLD)

Pass Cisco 300-420 Exam with 100% Guarantee

Free Download Real Questions & Answers **PDF** and **VCE** file from:

<https://www.leads4pass.com/300-420.html>

100% Passing Guarantee
100% Money Back Assurance

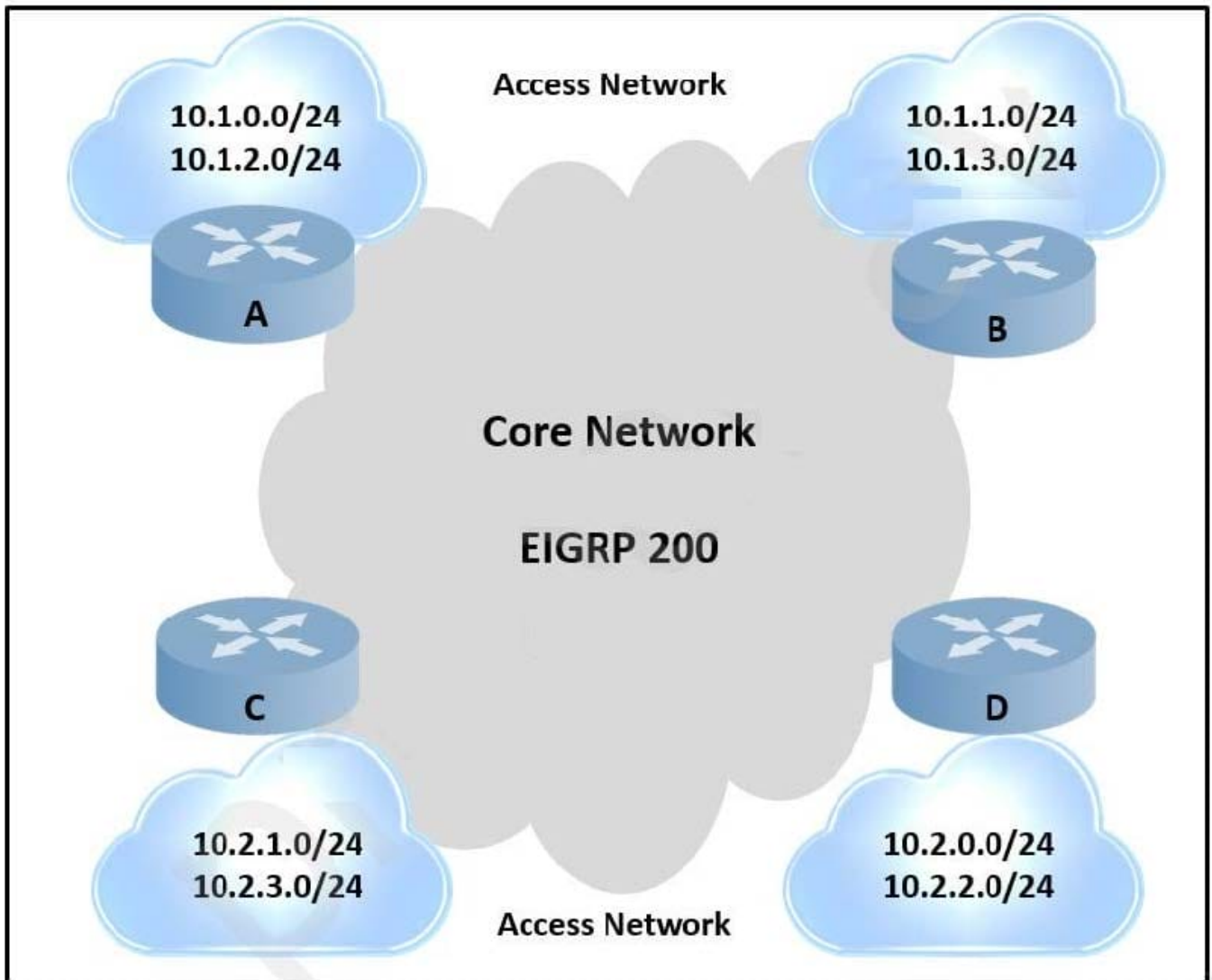
Following Questions and Answers are all new published by Cisco
Official Exam Center

-  **Instant Download** After Purchase
-  **100% Money Back** Guarantee
-  **365 Days** Free Update
-  **800,000+** Satisfied Customers



QUESTION 1

Refer to the exhibit.



A network engineer is designing a network for AS100. The design should ensure that all traffic enters AS100 via link 1 unless there is a network failure. In the event of a failure, link 2 should function as the path for incoming traffic. Which solution should the design include?

- A. Modify the next-hop attribute on R3.
- B. Use AS-Path prepending on R3.
- C. Modify the next-hop attribute on R4.
- D. Use AS-Path prepending on R4.

Correct Answer: D

QUESTION 2

DRAG DROP

Drag and drop the steps WAN Edge performs when on-boarded into the Cisco SD-WAN overlay from the left into the order they are completed on the right.

Select and Place:

Answer Area

WAN Edge authenticates to vBond.	Step 1
WAN Edge establishes an OMP session to vSmart.	Step 2
WAN Edge establishes a secure connection to vManage and vSmart.	Step 3
WAN Edge establishes IPsec connections to other TLOC locations.	Step 4

Correct Answer:

Answer Area

	WAN Edge authenticates to vBond.
	WAN Edge establishes a secure connection to vManage and vSmart.
	WAN Edge establishes an OMP session to vSmart.
	WAN Edge establishes IPsec connections to other TLOC locations.

QUESTION 3

Which two statements about VRRP object tracking are true? (Choose two)

A. The priority of a VRRP device can change in accordance with the up or down status of a VRRP object

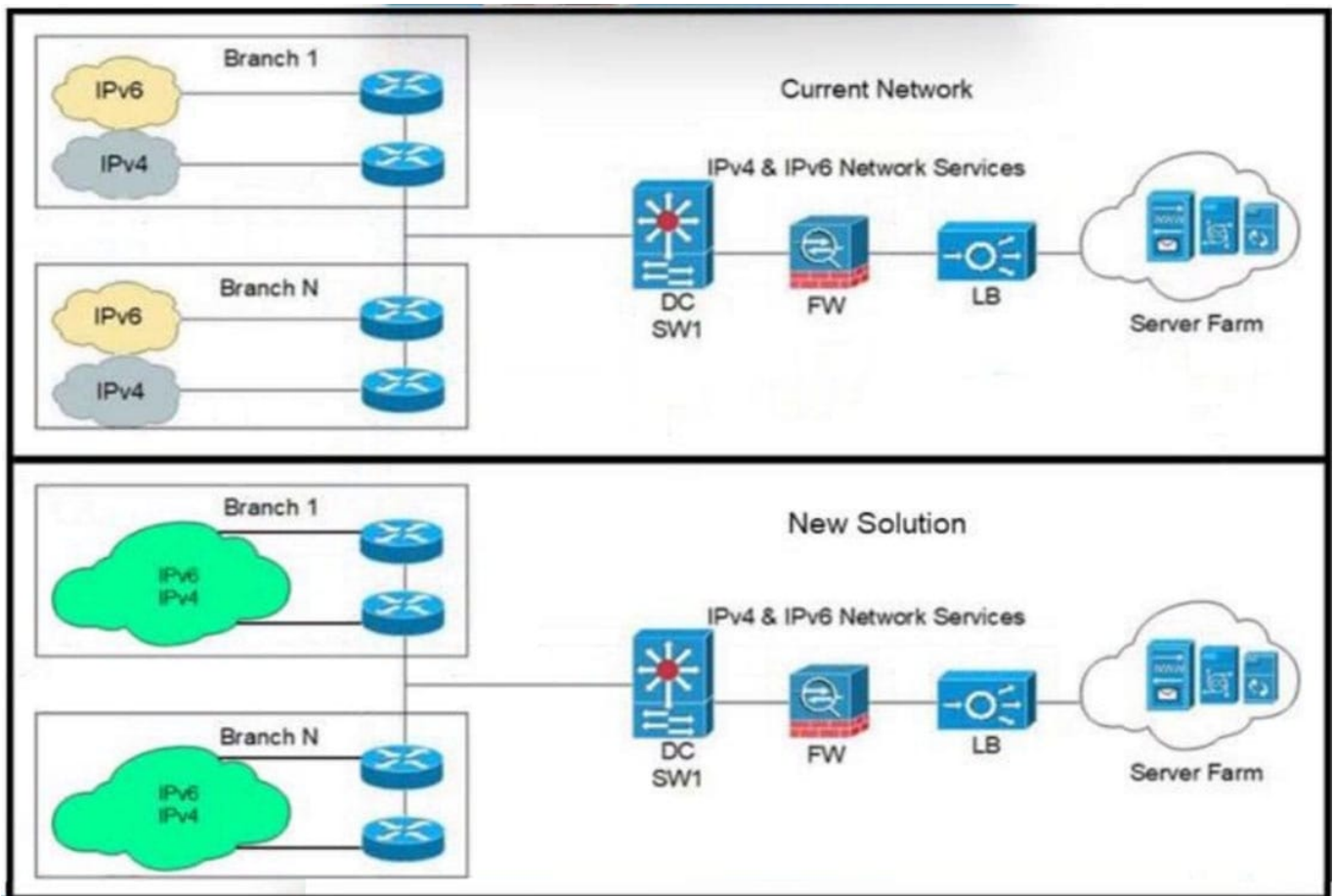
- B. The VRRP interface priority must be manually configured by the administrator
- C. A VRRP group can track only one object at a time
- D. VRRP can track the status of interfaces and routes
- E. VRRP supports only interce tracking

Correct Answer: AD

<https://www.ciscolive.com/c/dam/r/ciscolive/emea/docs/2019/pdf/BRKCRS-2821.pdf>

QUESTION 4

Refer to the exhibit.



An architect is designing a network for a customer supporting a Wake-on-LAN application. Which solution must the architect choose?

- A. IP directed-broadcasts on R1
- B. spanning-tree uplinkfast on SW1
- C. spanning-tree uplinkfast on SW2

D. IP directed-broadcasts on R2

Correct Answer: D

Explanation: "IP directed broadcast" must be supported on the last router to the destination subnet. Since the sleeping PC's don't have IP addresses, the machines must be called awake by broadcast that behaves like an unicast until they reach the destination network. There the directed broadcast is handled like a proper broadcast to wake all WOL machines. <https://www.cisco.com/c/en/us/support/docs/switches/catalyst-3750-series-switches/91672-catl3-wol-vlans.html>

QUESTION 5

What is the purpose of a Cisco SD-Access underlay network?

- A. to abstract IP-based connectivity from physical connectivity
- B. to emulate LAN segments to transport Layer 2 frames over a Layer 3 network
- C. to establish physical connectivity between switches and routers
- D. to provide virtualization by encapsulating network traffic over IP tunnels

Correct Answer: C

[300-420 VCE Dumps](#)

[300-420 Practice Test](#)

[300-420 Braindumps](#)