

300-420^{Q&As}

Designing Cisco Enterprise Networks (ENSLD)

Pass Cisco 300-420 Exam with 100% Guarantee

Free Download Real Questions & Answers **PDF** and **VCE** file from:

<https://www.leads4pass.com/300-420.html>

100% Passing Guarantee
100% Money Back Assurance

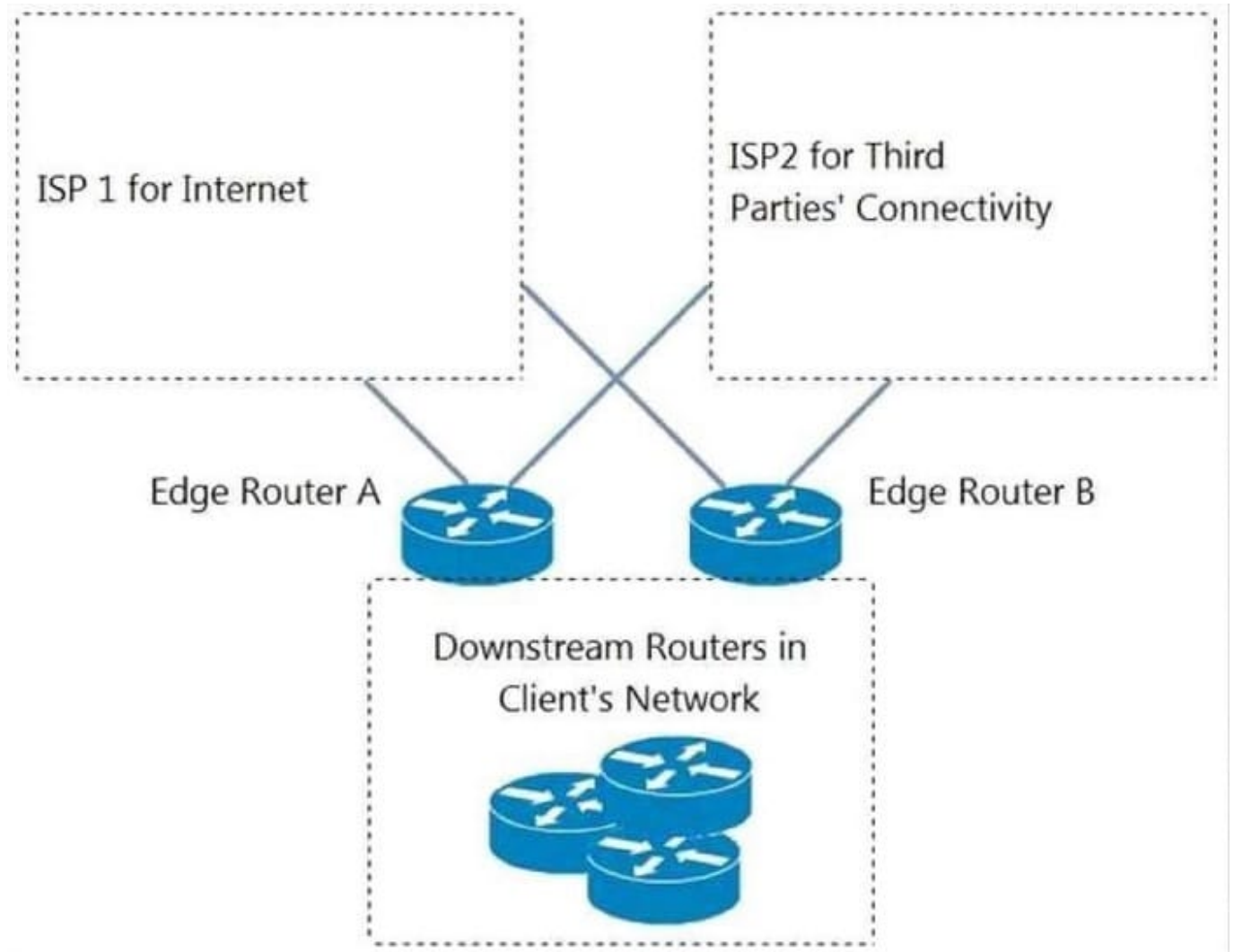
Following Questions and Answers are all new published by Cisco
Official Exam Center

- ⚙ **Instant Download** After Purchase
- ⚙ **100% Money Back** Guarantee
- ⚙ **365 Days** Free Update
- ⚙ **800,000+** Satisfied Customers



QUESTION 1

Refer to the exhibit. An engineer is designing a BGP solution for a client that peers with ISP1 for full Internet connectivity and with ISP2 for direct exchange of routes for several third parties. Which action, when implemented on the edge routers, enables the client network to reach the Internet through ISP1?



- A. Run an eBGP session within different VRFs for each ISP.
- B. Advertise a default route for downstream routers within the client network.
- C. Apply the AS-path prepend feature for ISP2.
- D. Apply route filtering such that the client advertises only routes originated from its own AS.

Correct Answer: B

QUESTION 2

A customer's environment includes hosts that support IPv6-only. Several of these hosts must communicate with a public web server that has only IPv4 domain name resolution. Which solution should the customer use in this environment?

- A. utilize NAT64 to translate the addresses
- B. Implement NAT44 at the edge of the customer network
- C. use 6to4 and a tunnel to translate the addresses
- D. implement 6PE to resolve hostname resolution

Correct Answer: A

QUESTION 3

DRAG DROP

Drag and drop the descriptions from the left onto the corresponding VPN types on the right.

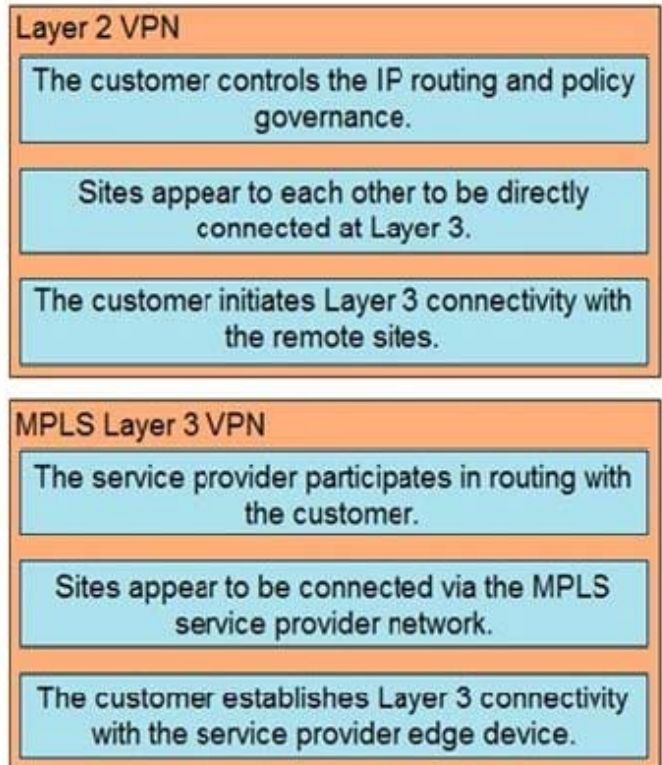
Select and Place:

Answer Area

The service provider participates in routing with the customer.	Layer 2 VPN
The customer controls the IP routing and policy governance.	
Sites appear to each other to be directly connected at Layer 3.	
Sites appear to be connected via the MPLS service provider network.	MPLS Layer 3 VPN
The customer initiates Layer 3 connectivity with the remote sites.	
The customer establishes Layer 3 connectivity with the service provider edge device.	

Correct Answer:

Answer Area



QUESTION 4

How do endpoints inside an SD-Access network reach resources outside the fabric?

- A. A VRF fusion router is used to map resources in one VN to another VN
- B. Fabric borders use VRFs to map VNs to VRFs
- C. SD-Access transit links are used to transport encapsulated traffic from one fabric to another
- D. A fabric edge is used to de-encapsulate VXLAN traffic to normal IP traffic then transported over the outside network

Correct Answer: B

"Packets and frames sourced from inside the fabric and destined outside of the fabric are de-encapsulated by the border node"(not the edge node) <https://www.cisco.com/c/en/us/td/docs/solutions/CVD/Campus/cisco-sda-design-guide.html>

QUESTION 5

An engineer must connect a new remote site to an existing OSPF network. The new site consists of two low-end

routers, one for WAN, and one for LAN. There is no demand for traffic to pass through this area. Which area type does the engineer choose to provide minimal router resource utilization, while still allowing for full connectivity to the rest of the network?

- A. not so stubby
- B. totally not so stubby
- C. totally stubby area
- D. stubby area

Correct Answer: C

[Latest 300-420 Dumps](#)

[300-420 Practice Test](#)

[300-420 Study Guide](#)